

KEY FACTS

| | |
|---------------|--|
| INDOOR | 8.000 m ² total area (4 floors) |
| OUTDOOR | 400 m ² backyard |
| MAX. CAPACITY | 500-1000 PAX per floor |

CANK
Karl-Marx-Straße 95
12043 Berlin-Neukölln

Contact
hi@cank.berlin
www.cank.berlin

CAPACITY

| | |
|--------------|--------------|
| GROUND FLOOR | 800 PAX |
| LEVEL 1 | 100 PAX |
| LEVEL 3 | upon request |
| LEVEL 4 | upon request |

SPACES

| | |
|--------------|---------------------|
| GROUND FLOOR | 1500 m ² |
| LEVEL 1 | 1700 m ² |
| LEVEL 2 | upon request |
| LEVEL 3 | 1300 m ² |
| LEVEL 4 | 1400 m ² |

FACILITIES

| | |
|-------------|--|
| ELECTRICITY | Groundfloor: 1x 63amp / 1x 32amp / 20x Schuko |
| | Level 1: 2x 63amp / 1x 32amp / 1x 16amp / 30x Schuko |
| | Level 2: E02: 1x 32amp / 16amp / 30x Schuko |
| | Level 3: 1x 32amp / 25x Schuko |

| | |
|--------------|--------------|
| SOUND, LIGHT | upon request |
|--------------|--------------|

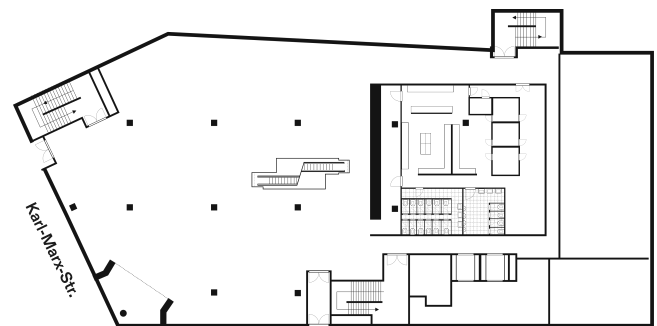
| | |
|-----------|---------------------------------------|
| LOGISTICS | via Anzengruberstr. 25, 12043 Berlin: |
| | - Headroom 3.50 m |
| | - Width approx. 3.5 m |
| | - suitable for max. 7.5t |

| | |
|----------|------------------------------|
| CATERING | several Partner upon request |
|----------|------------------------------|

| | |
|--|--|
| | <i>Water supply connections only available on GF</i> |
|--|--|

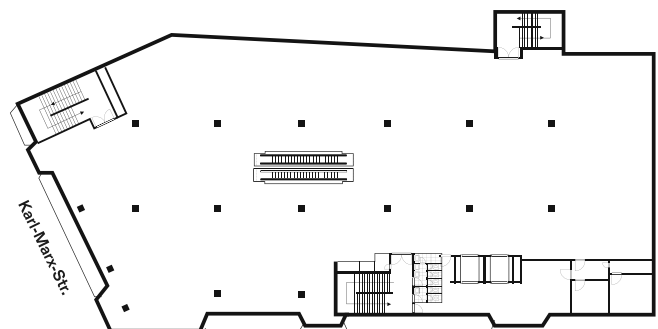
| | |
|--------|---|
| DRINKS | Beverages handled via Bechstein Network |
| | If external, cork per head |

GROUND FLOOR



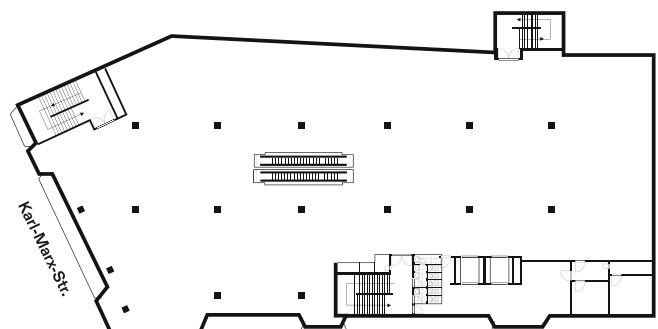
Anzengruberstr.

LEVEL 1



Anzengruberstr.

LEVEL 2 - UPON REQUEST



Anzengruberstr.

MARKETING

CANK
Karl-Marx-Straße 95
12043 Berlin-Neukölln

Contact
hi@cank.berlin
www.cank.berlin

ADVERTISING SPOTS

| | |
|--------------------|------------------------------|
| Anzengruberstr. 25 | Field 1: h 2486mm / w 4796mm |
| | Field 2: h 2452mm / w 4770mm |
| | Field 3: h 2435mm / w 5012mm |
| | Front: h 2432mm / w 668mm |

| | |
|----------------------|------------------------------|
| Karl-Marx-Straße. 95 | Field 1: h 2407mm / w 3436mm |
| | Field 2: h 2414mm / w 3432mm |
| | Field 3: h 2420mm / w 3432mm |
| | Field 3: h 2413mm / w 3419mm |
| | Front 1: h 2409mm / w 1175mm |
| | Front 2: h 2422mm / w 666mm |

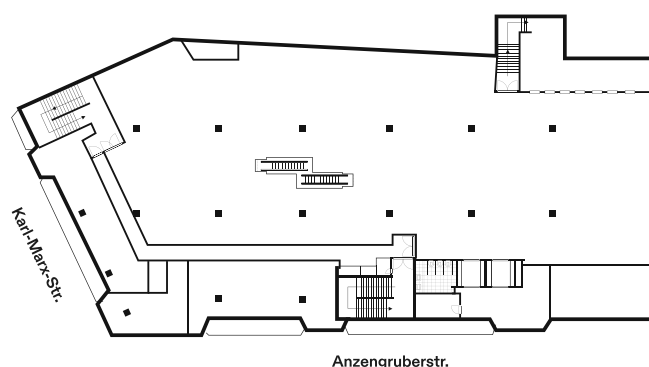
| | |
|-----------------------|---------------------------------|
| Main Entrance (Glass) | Full Space: h 2175mm / w 7193mm |
| | Solo: h 2175mm / w 886mm |

| | |
|-----------|---------------------|
| Billboard | h 4830mm / w 5930mm |
|-----------|---------------------|

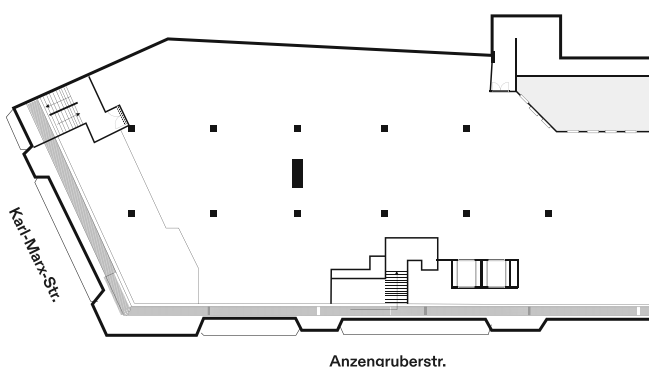
| | |
|--------|---|
| Public | Approximately 10,000 pedestrians pass daily by the windows located directly on Karl-Marx. |
|--------|---|

| | |
|-------------|--|
| PLEASE NOTE | → All levels can be rented individually & separated. |
| | → Main entrance on ground floor. |

LEVEL 3



LEVEL 4



BUILDING

- LEVEL 4
- LEVEL 3
- LEVEL 2
- LEVEL 1
- GROUND FLOOR

