

# Living Lattice

Nesiah Neves  
Vi Nguyen



The concept of this project comes from merging biodiversity with organic, flowing, and airy installations that emphasize translucency and the dynamic interplay of shadows. Inspired by nests and lattices, the structures create immersive, ever-shifting environments that mimic nature's delicate balance between openness and shelter.



Project Concept

# Project 1





01 - Handmade Collage

“Our intention is to create a space that is both defined and fluid, a place where ‘boundaries become permeable, allowing for the interweaving of experiences’ (Frida Escobedo). This installation embraces translucency as a medium for **connection**—light, air, and movement shape and reshapes the perception of space, responding to the presence of the visitor. “The fabric itself is not just a surface but an active participant in how the space is understood” (Akane Moriyama), shifting with the wind, filtering light, and revealing **layers** of depth and interaction. This interplay fosters a continuous dialogue between people and their surroundings. ‘It’s not about an object, but about the way it invites engagement, how it generates new spatial relationships” (Nerea Feliz). The installation encourages participation, urging visitors to move through and around it, experiencing subtle shifts in opacity and structure. As Petra Blaisse describes, ‘It’s about transition, about the way material and light affect our perception of enclosure and **openness**.’ This fusion of elements creates an environment that is immersive and ever-changing—one where architecture dissolves into **experience**, and where visitors find themselves not just observing but becoming an integral part of the installation’s ephemeral nature.”

Project Intention

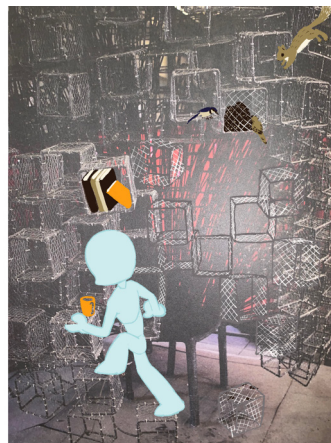
- › Counting light refractions through the lattice
- › Watching the shadows change with the sun
- › Threading vines through the lattice spaces
- › Watching the butterflies and other insects gather by the plants
  - › Chasing the butterflies
- › Enjoying the patterns made by the lattice shadow
- › Smelling the aroma of the various flowers and plants
  - › Basking in the light and shadow of the lattice
  - › Listening to the sound of insects buzzing

Program

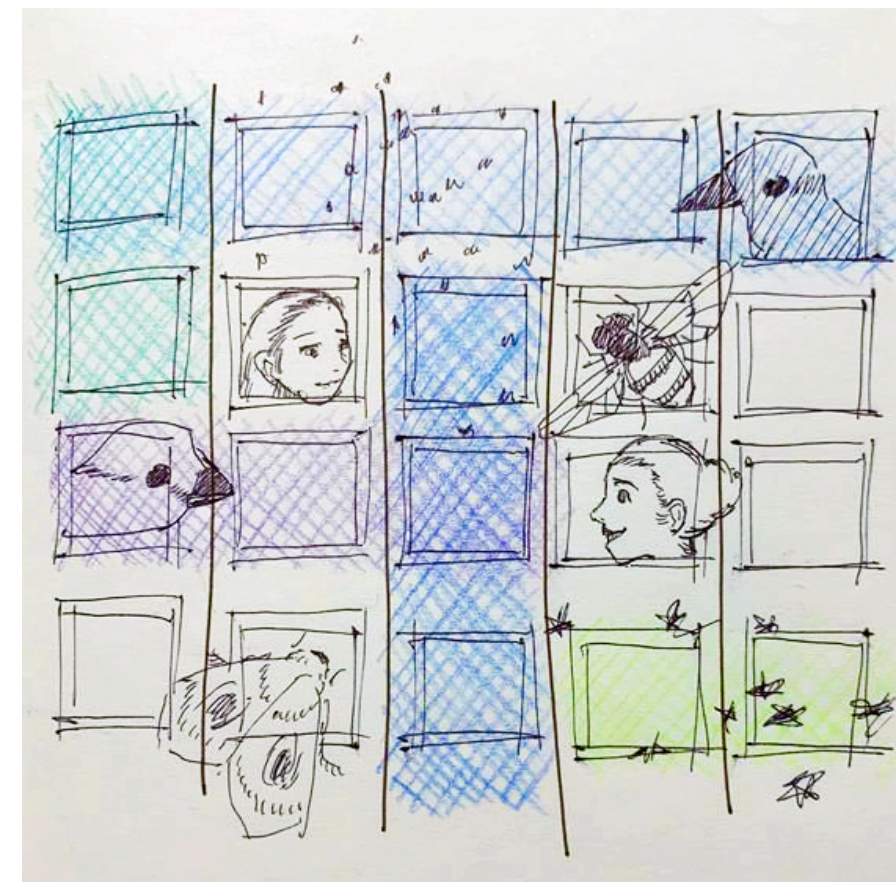


Collage - Frida Escobedo



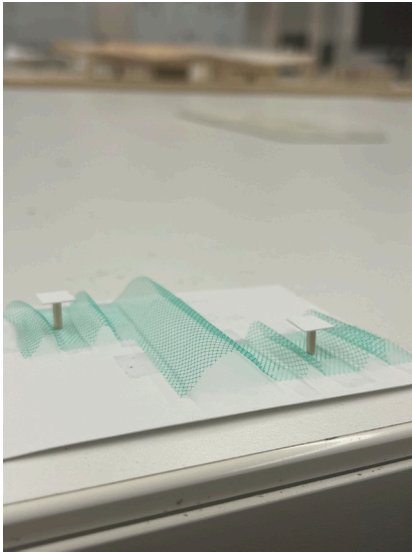
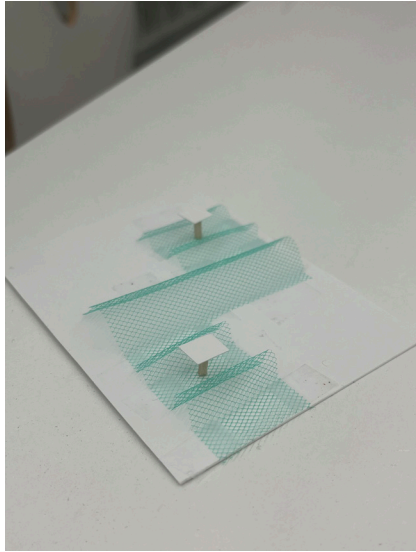
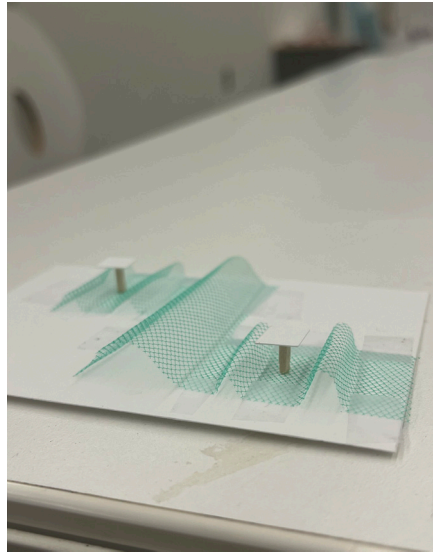


Gif

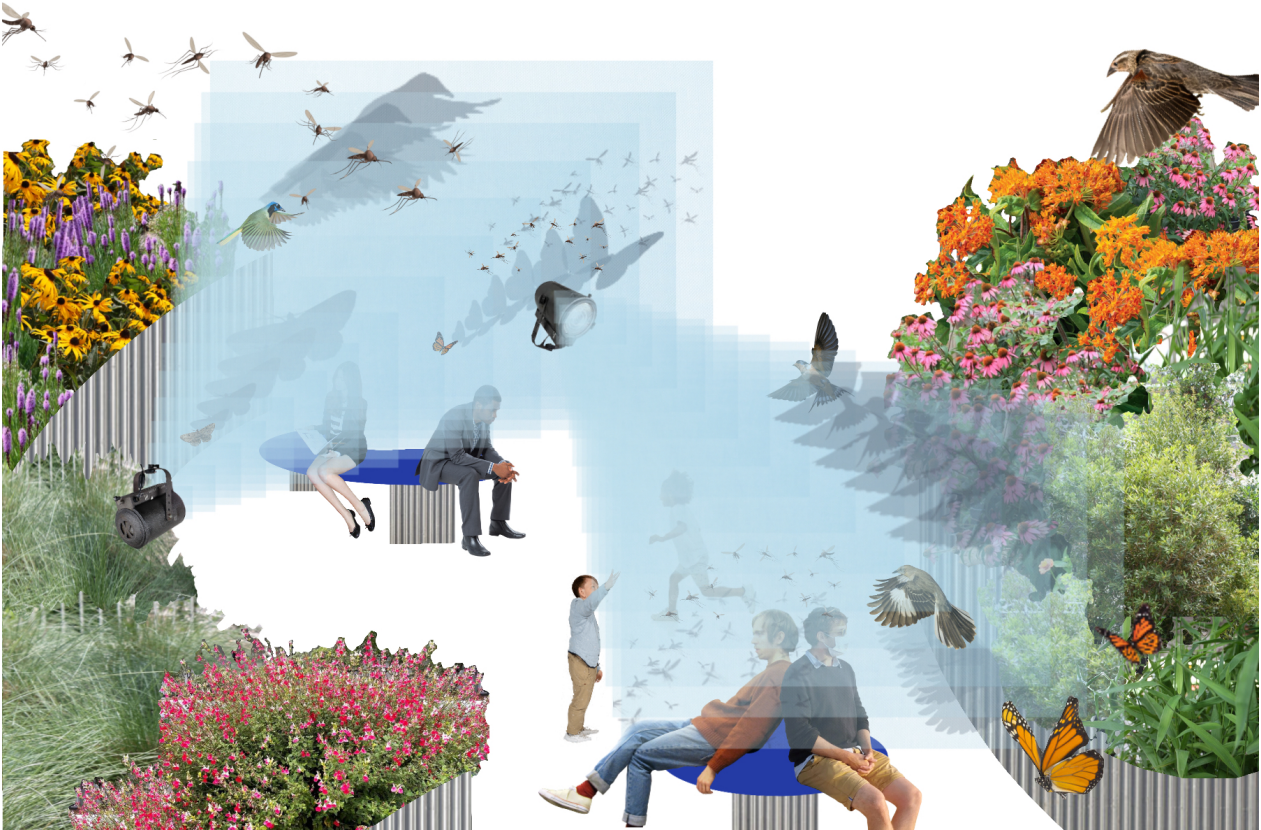


Drawing - Nerea Feliz





01 - Concept Model

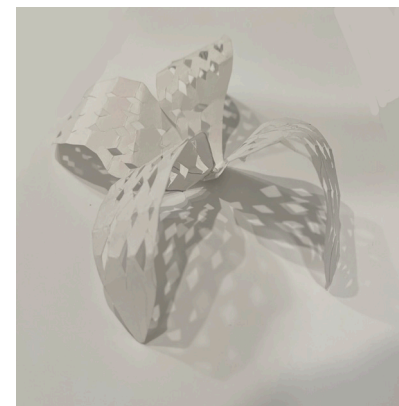


Collage - Nerea Feliz

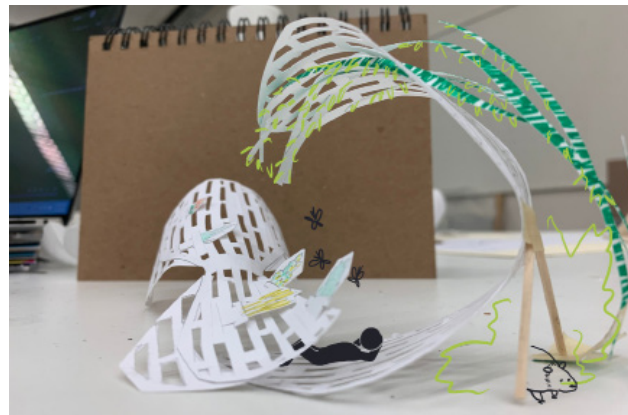




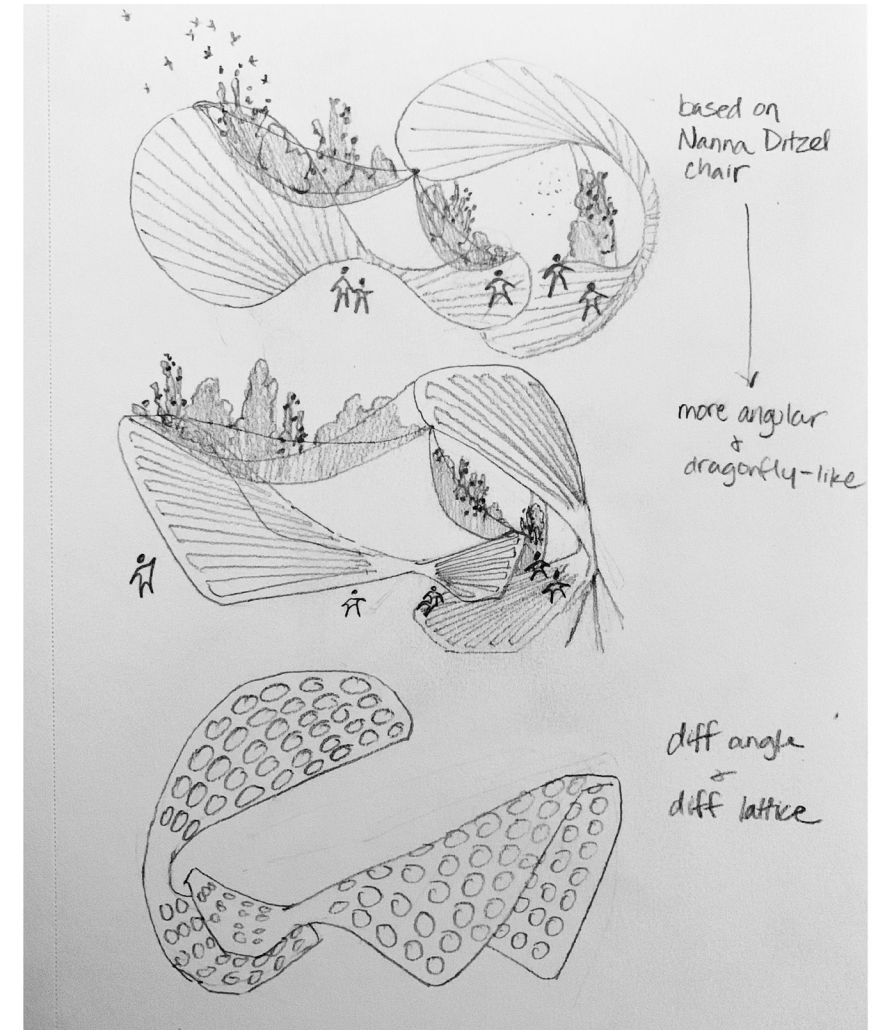
Collage - Urban Domestiiity



02- Concept Model

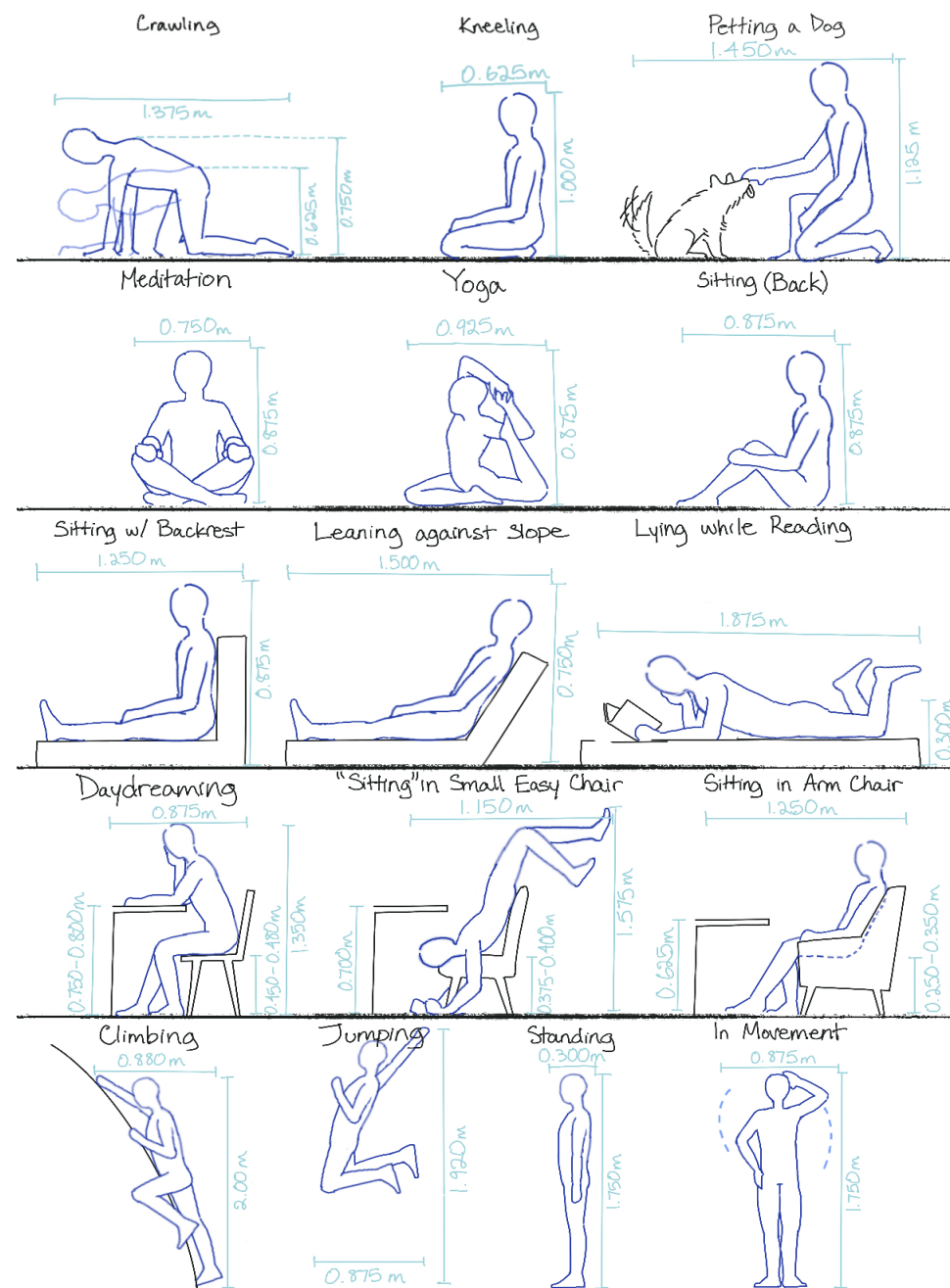


03 - Concept model



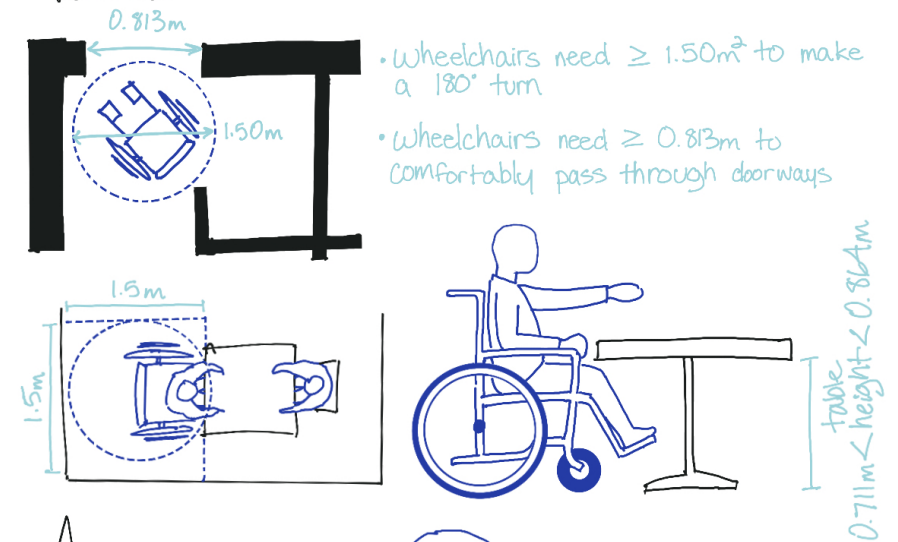
Concept sketch





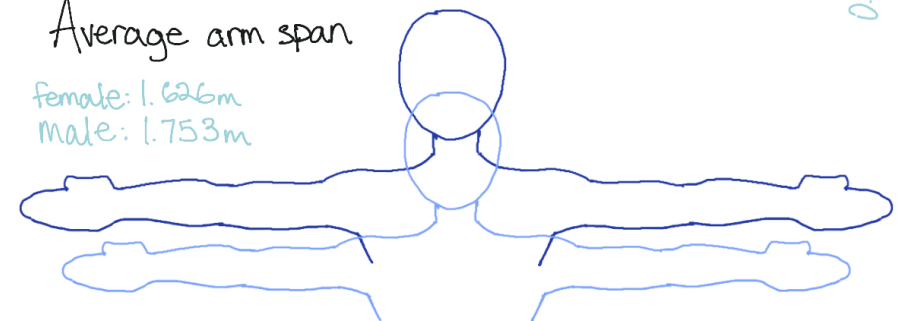
Body Movements

## Wheelchair rotation



## Average arm span

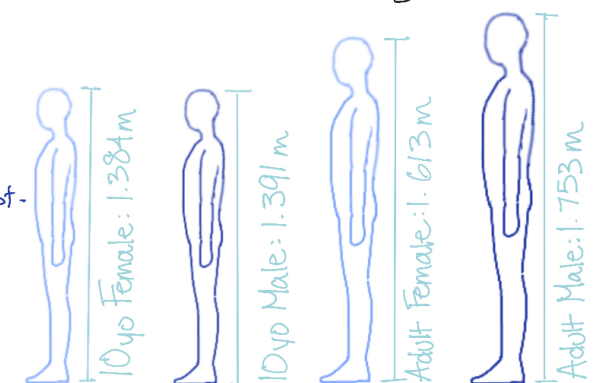
female: 1.626m  
male: 1.753m



## What is Ergonomics?

Ergonomics is the science of molding the built environment to best promote efficiency and comfortability of its users.

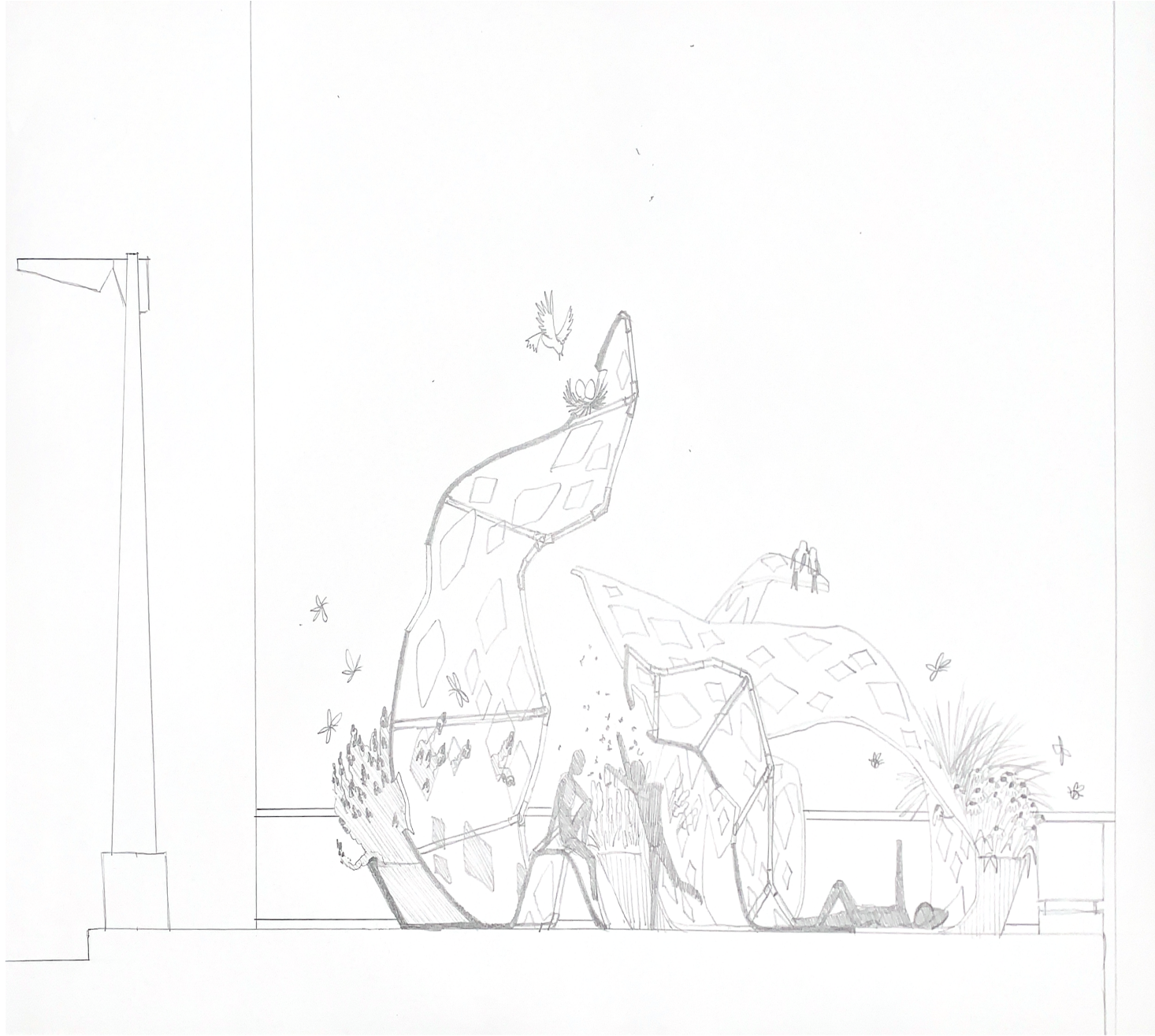
## Average heights



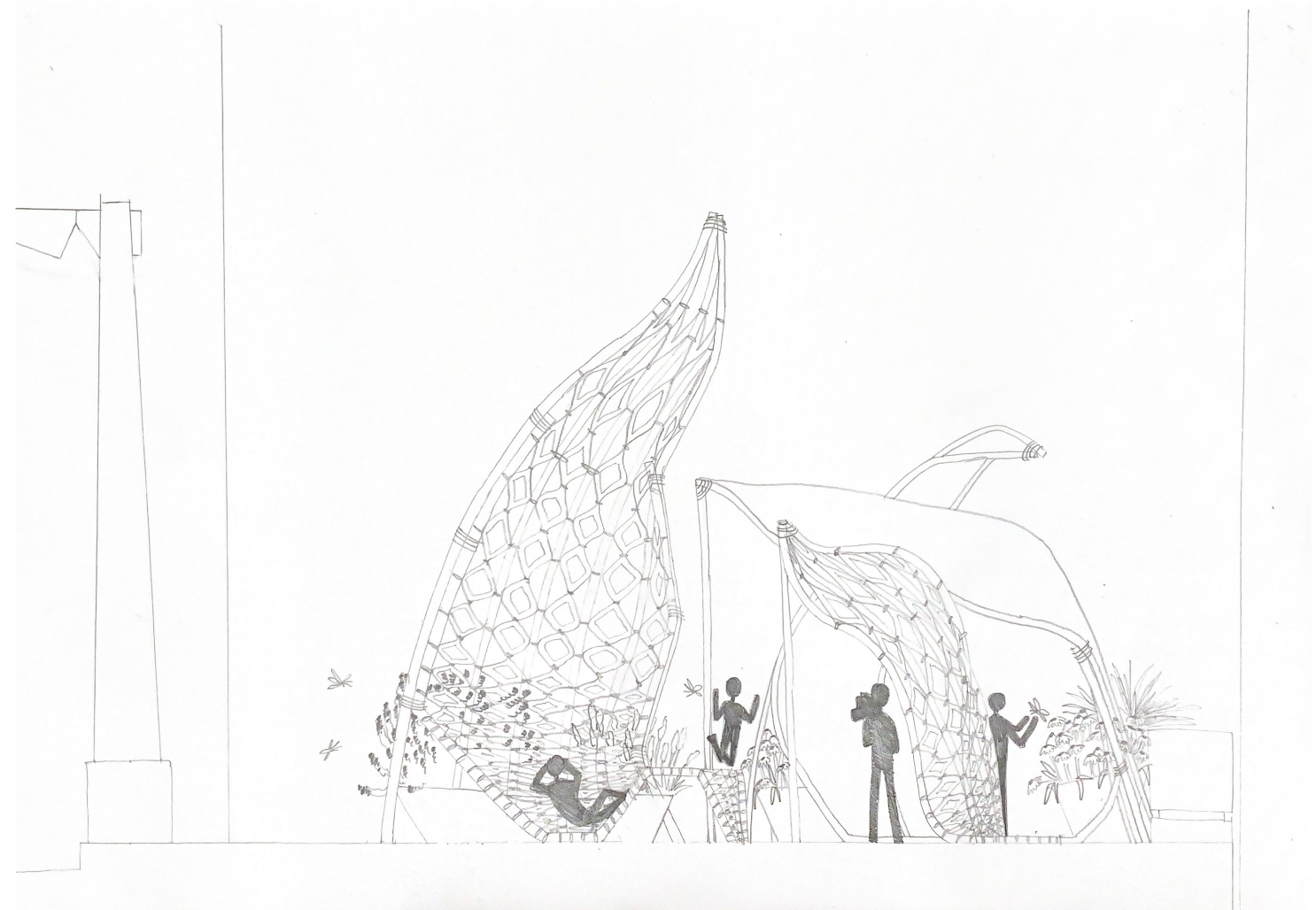
Thank you!  
More to come

## Project 2



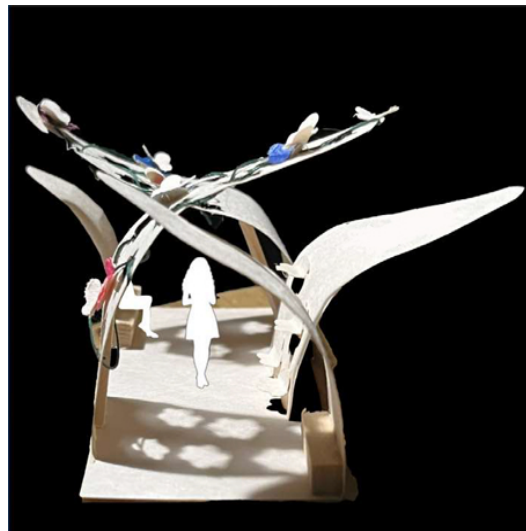
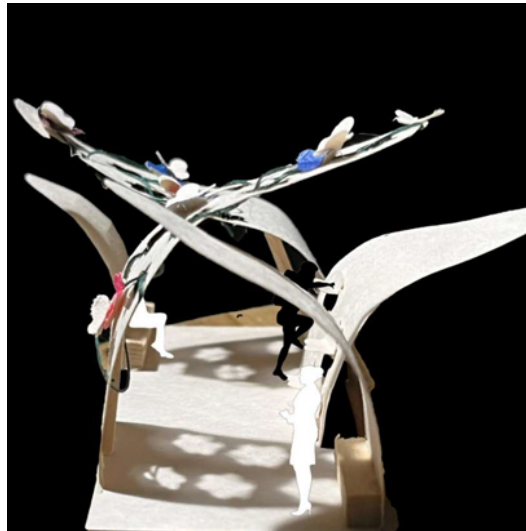


01- Section



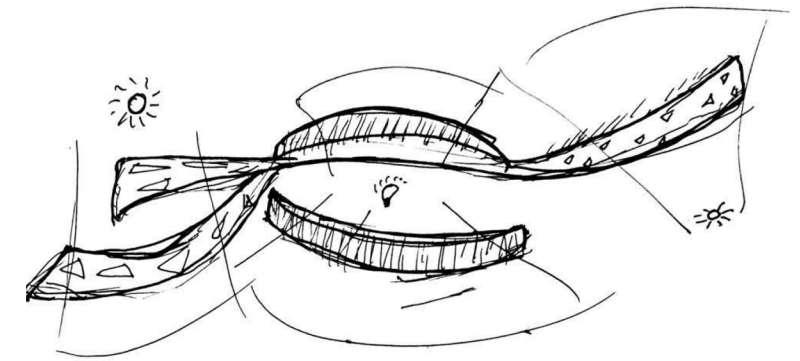
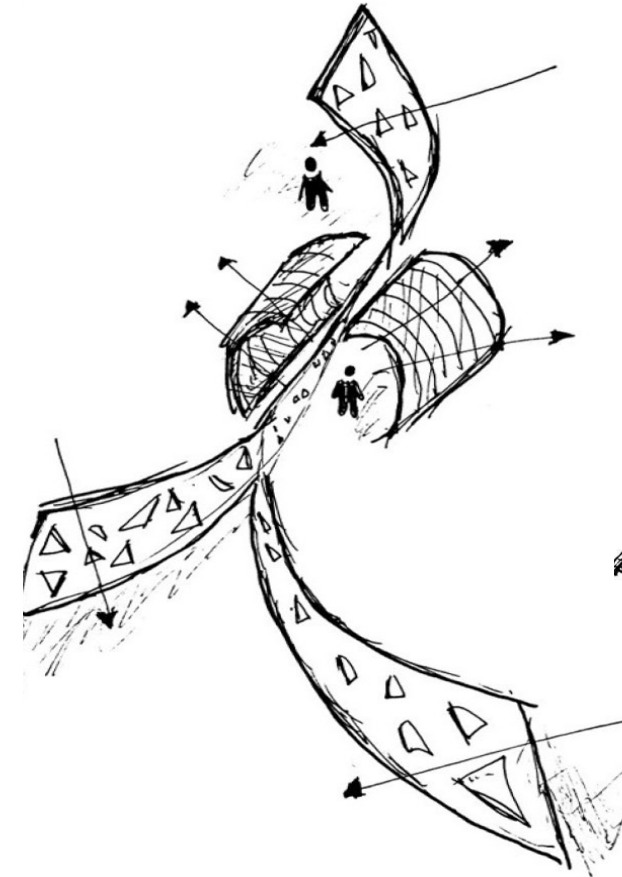
02- Section

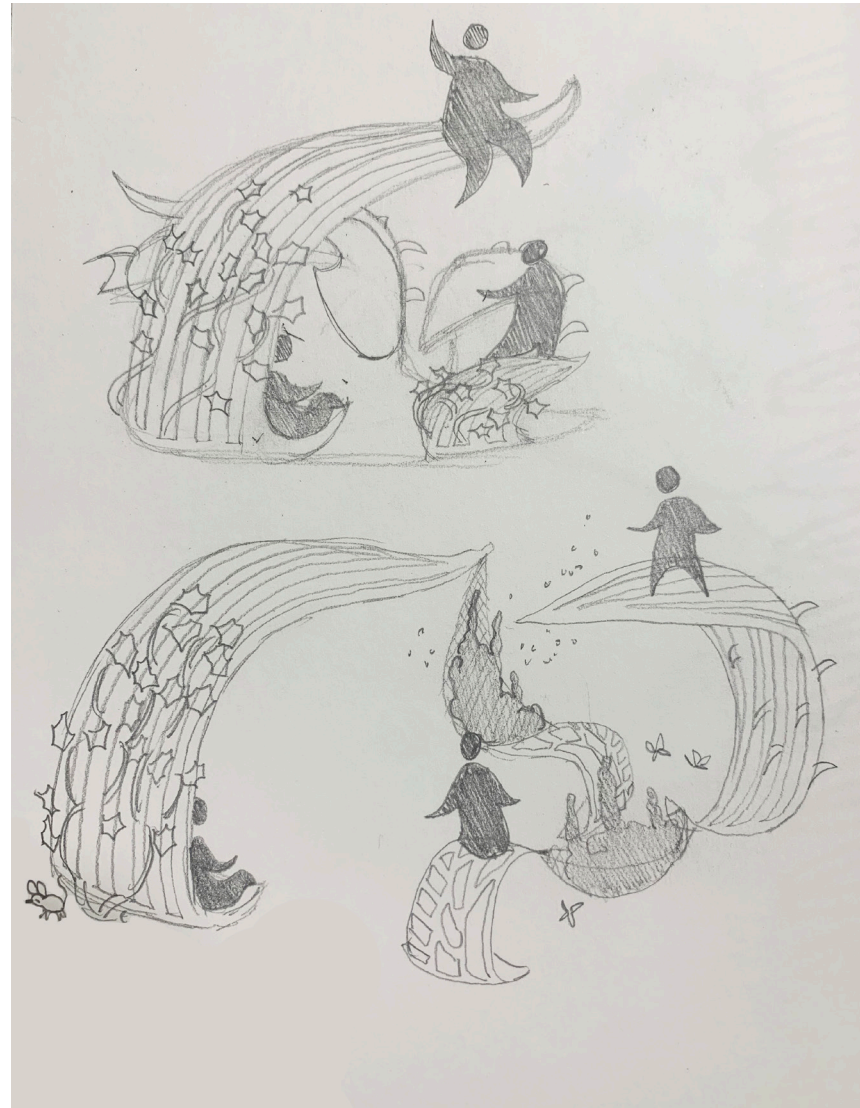




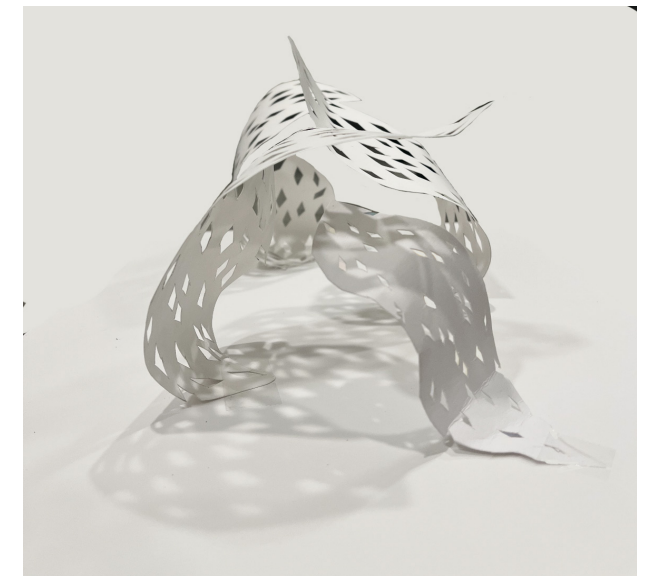
01- Project Exchange  
by- Pam, Luke, Alaa

LIGHT SOURCE



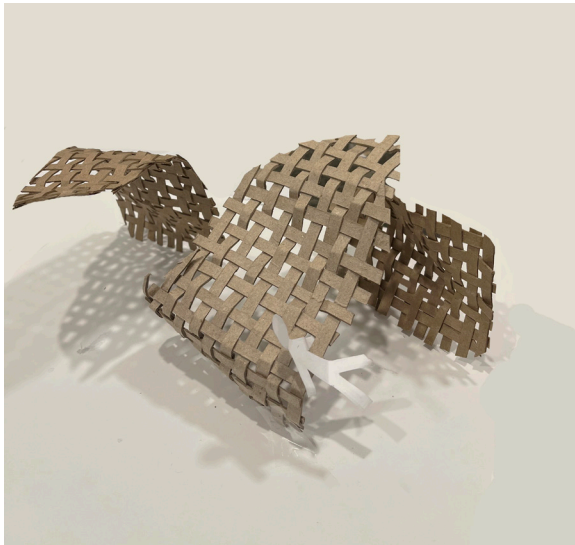
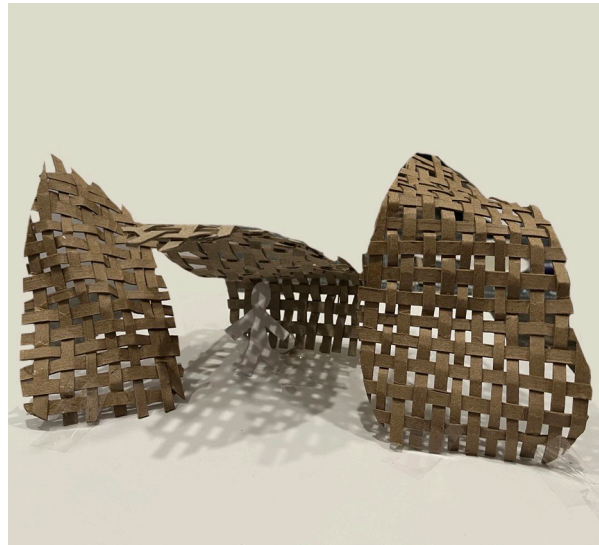
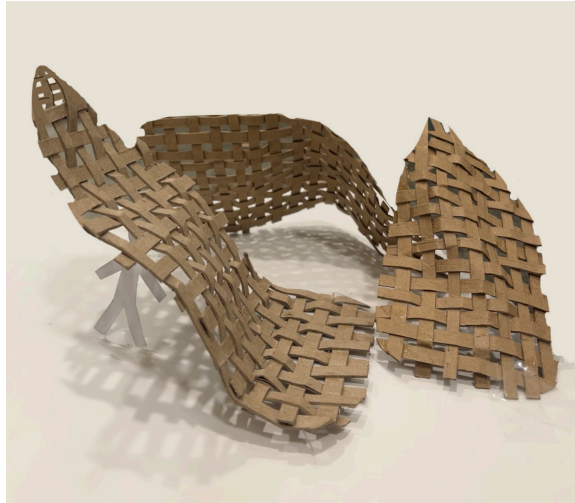
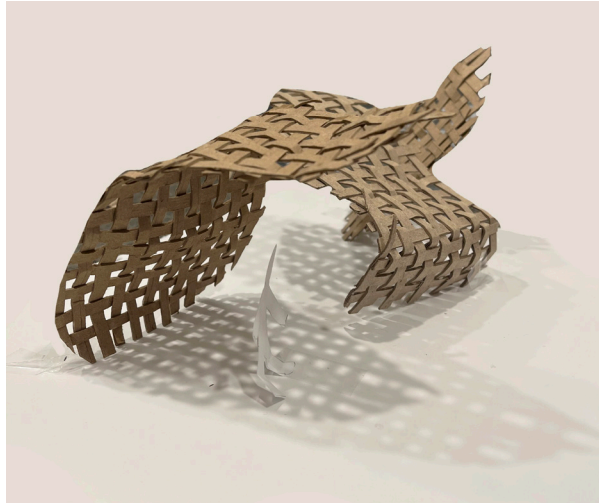


01- Concept Sketch

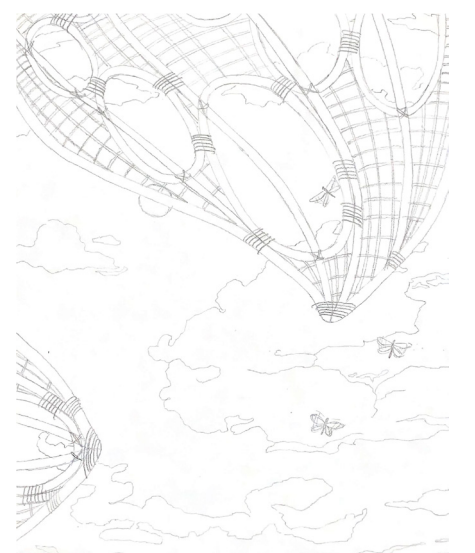
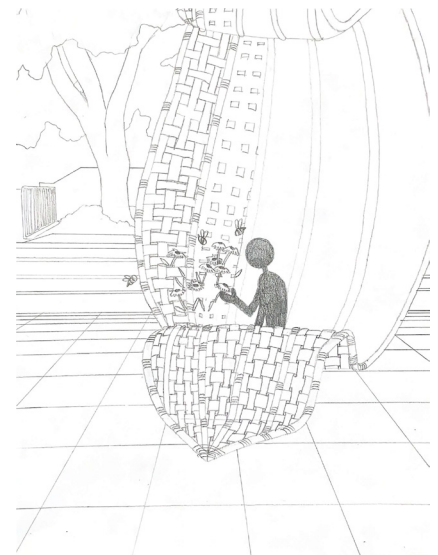
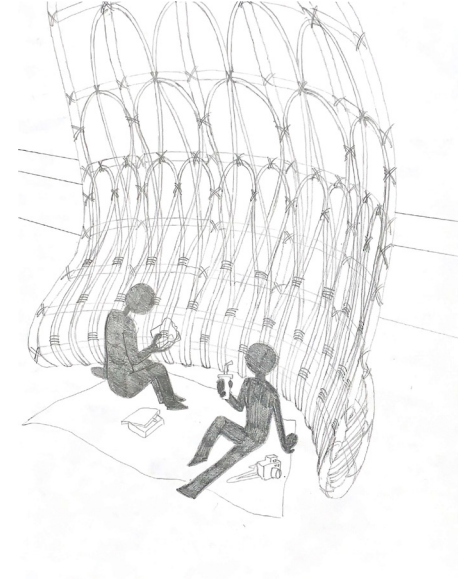
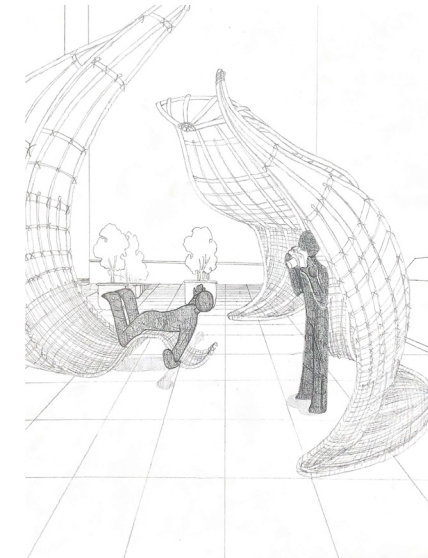
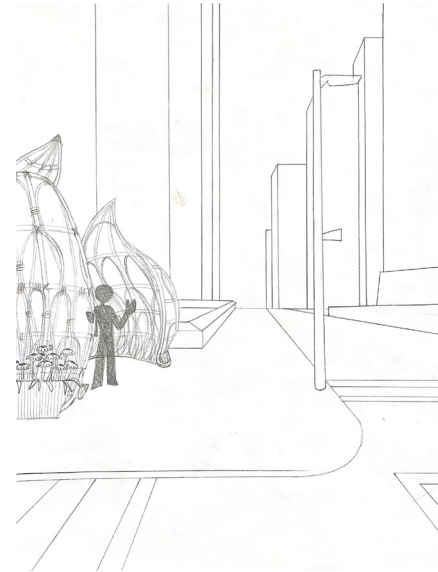


01- Concept Model



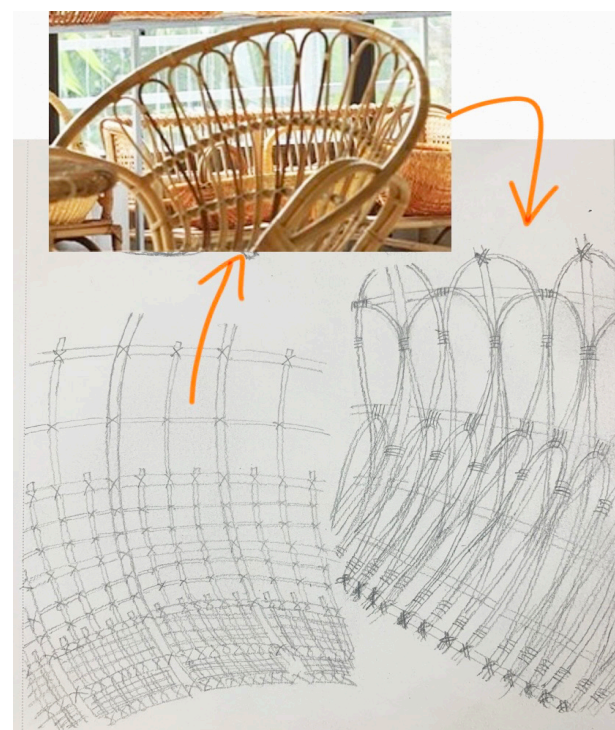
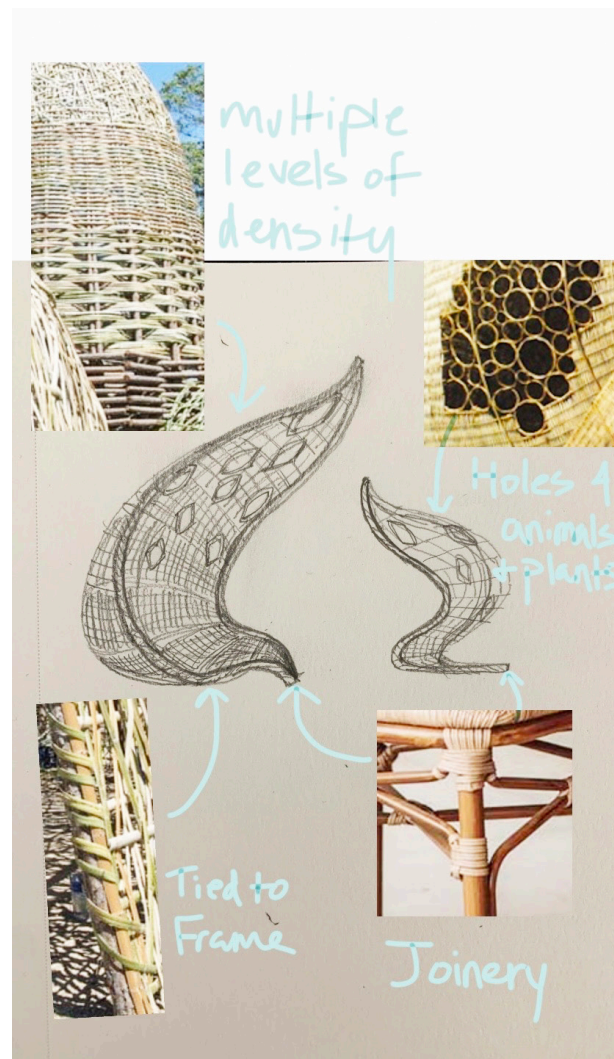


02- Concept Model

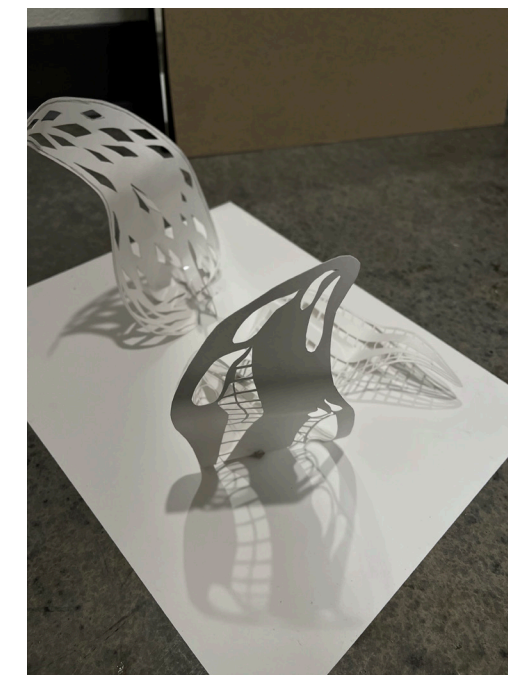
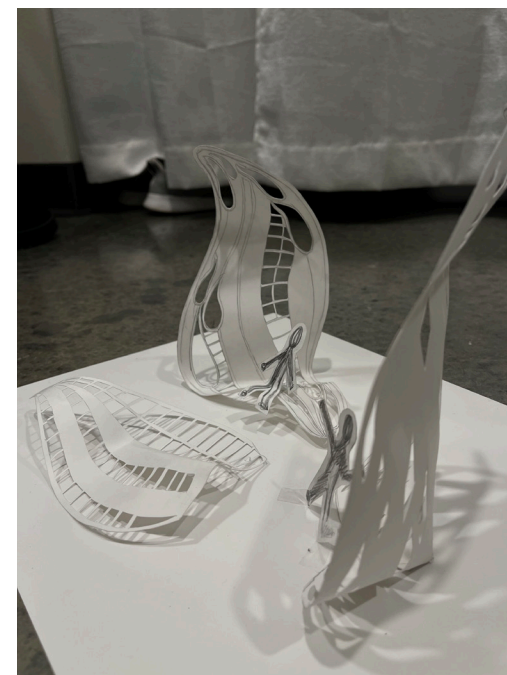


01- Perspective drawings



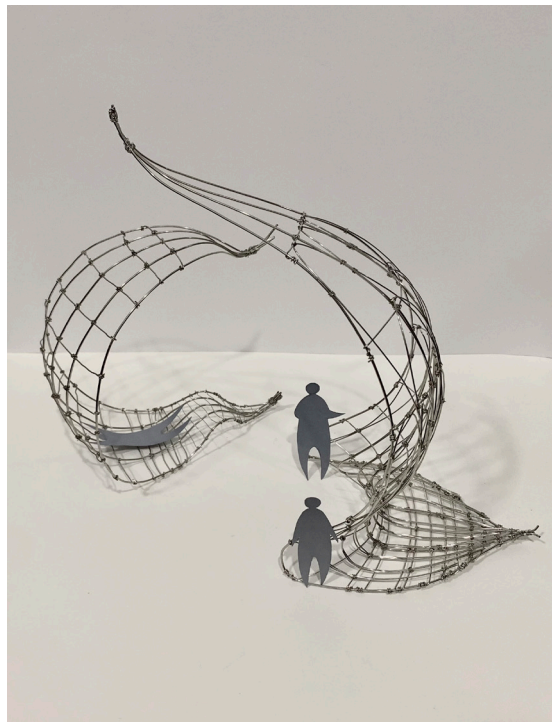


01 - Sketches

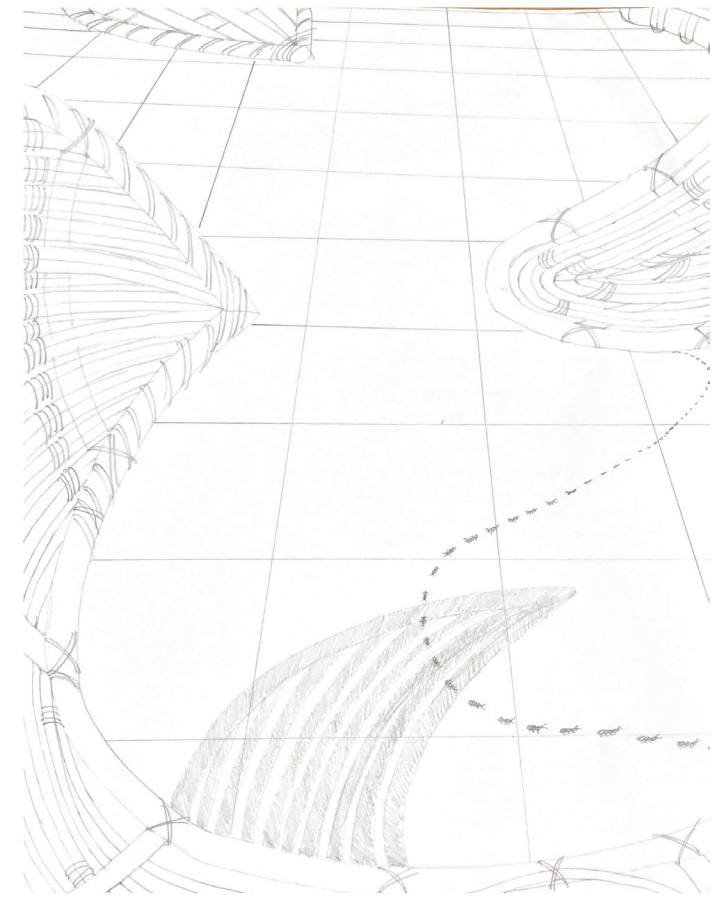
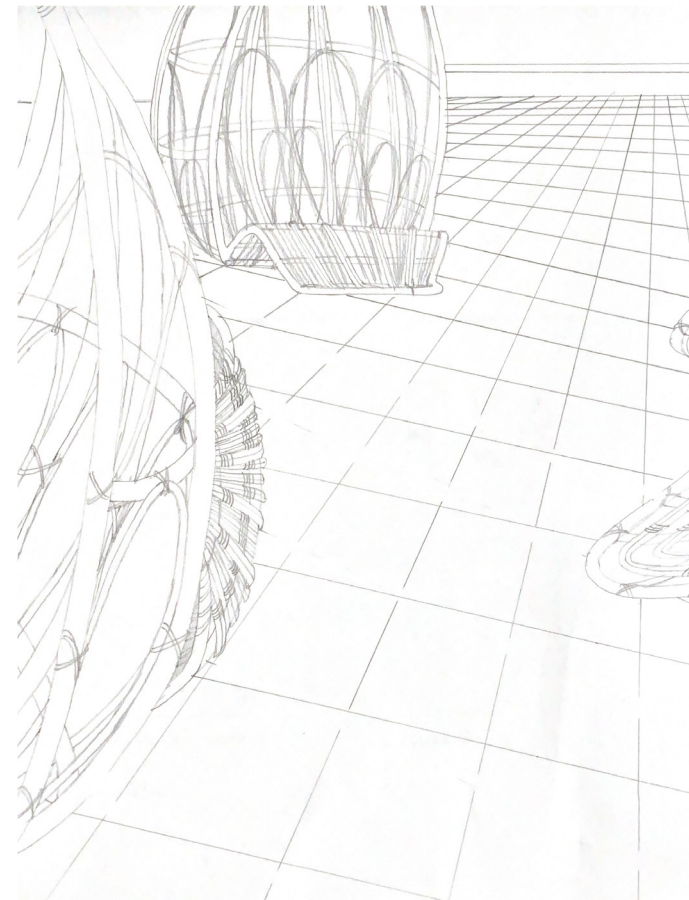


02 - Concept model

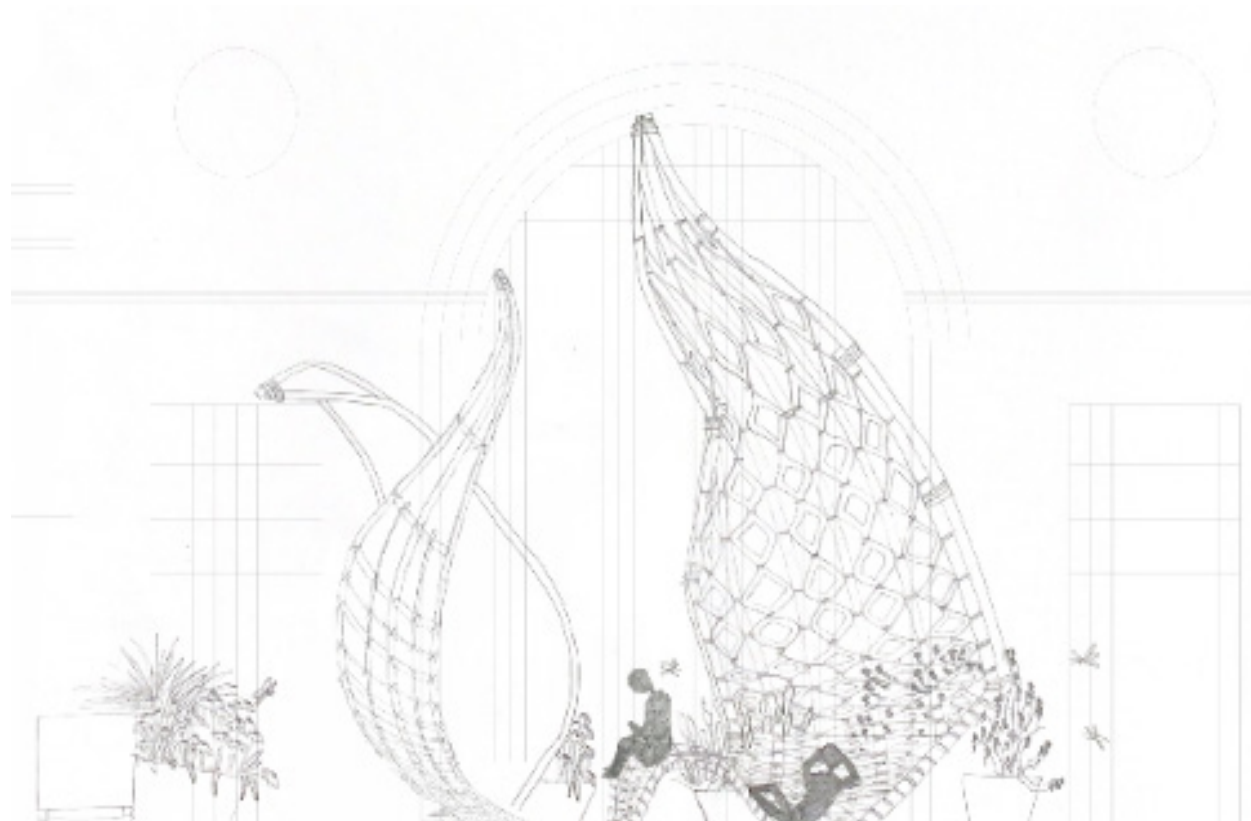




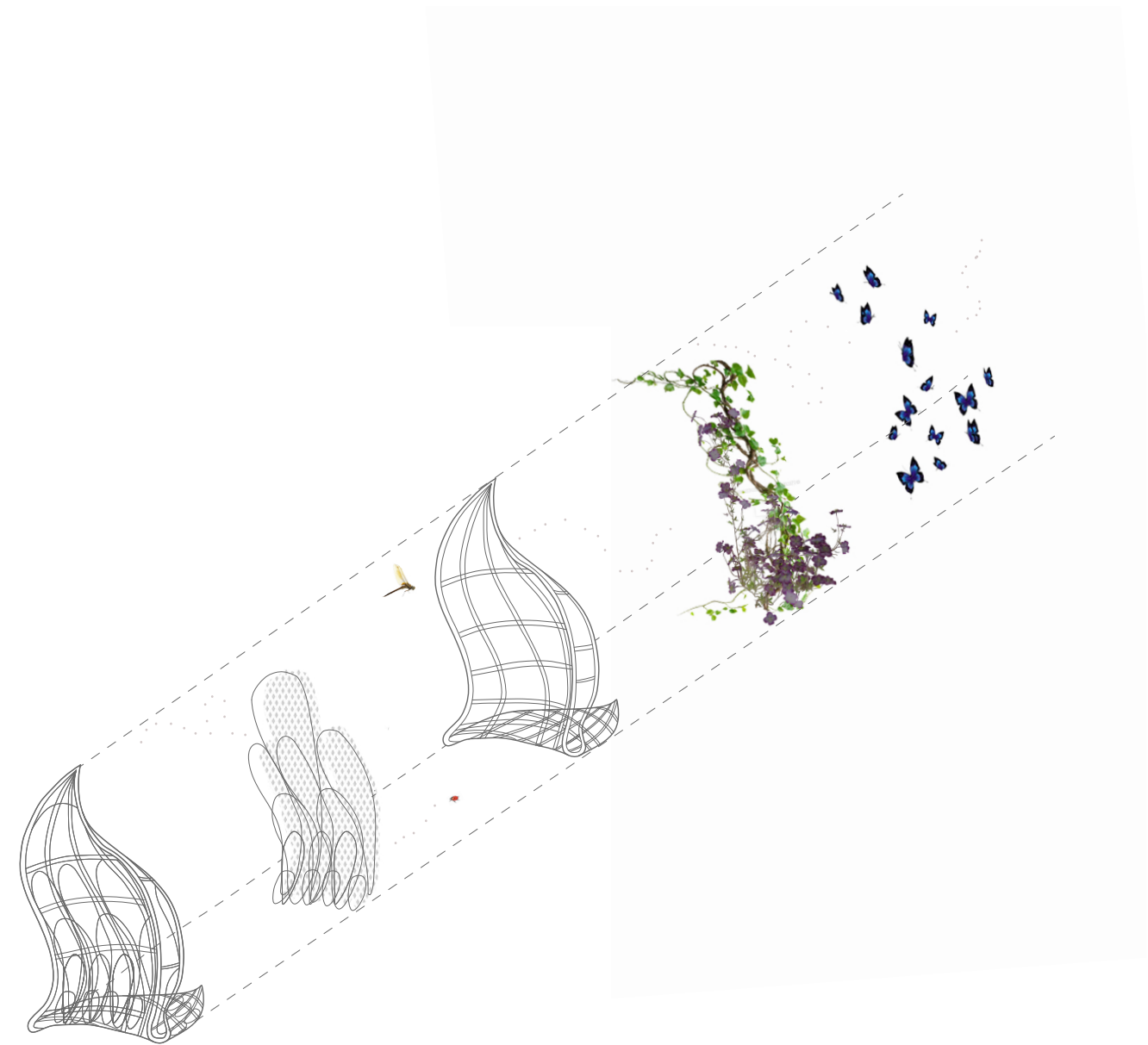
02 - Concept model



02 - Drawing Perspective

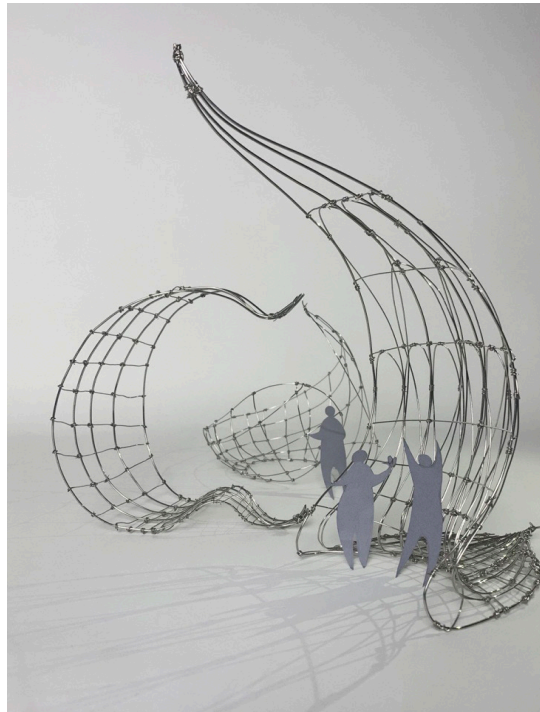


0- Construction Drawing

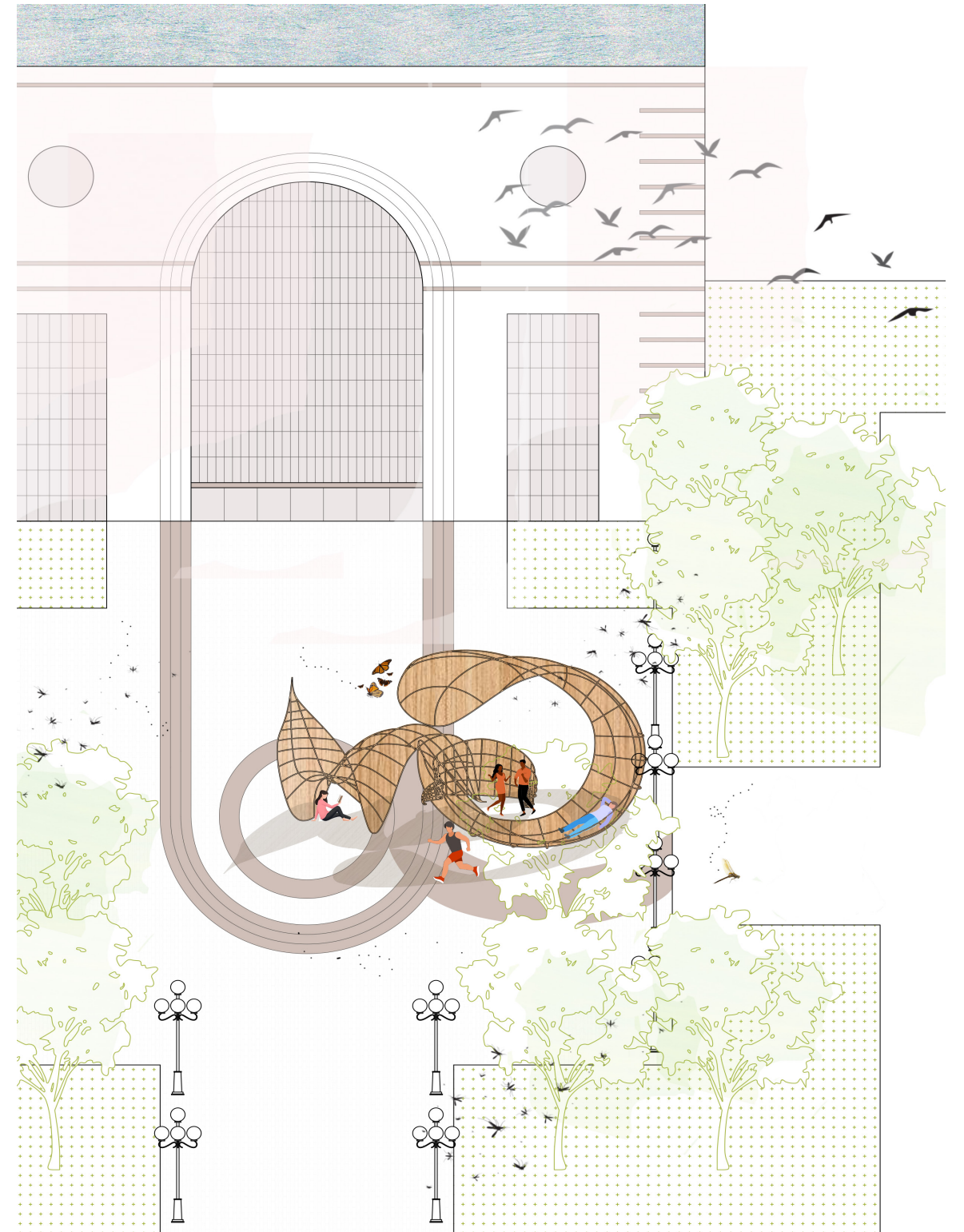


02 - Exploded Isometric





03 - Concept model

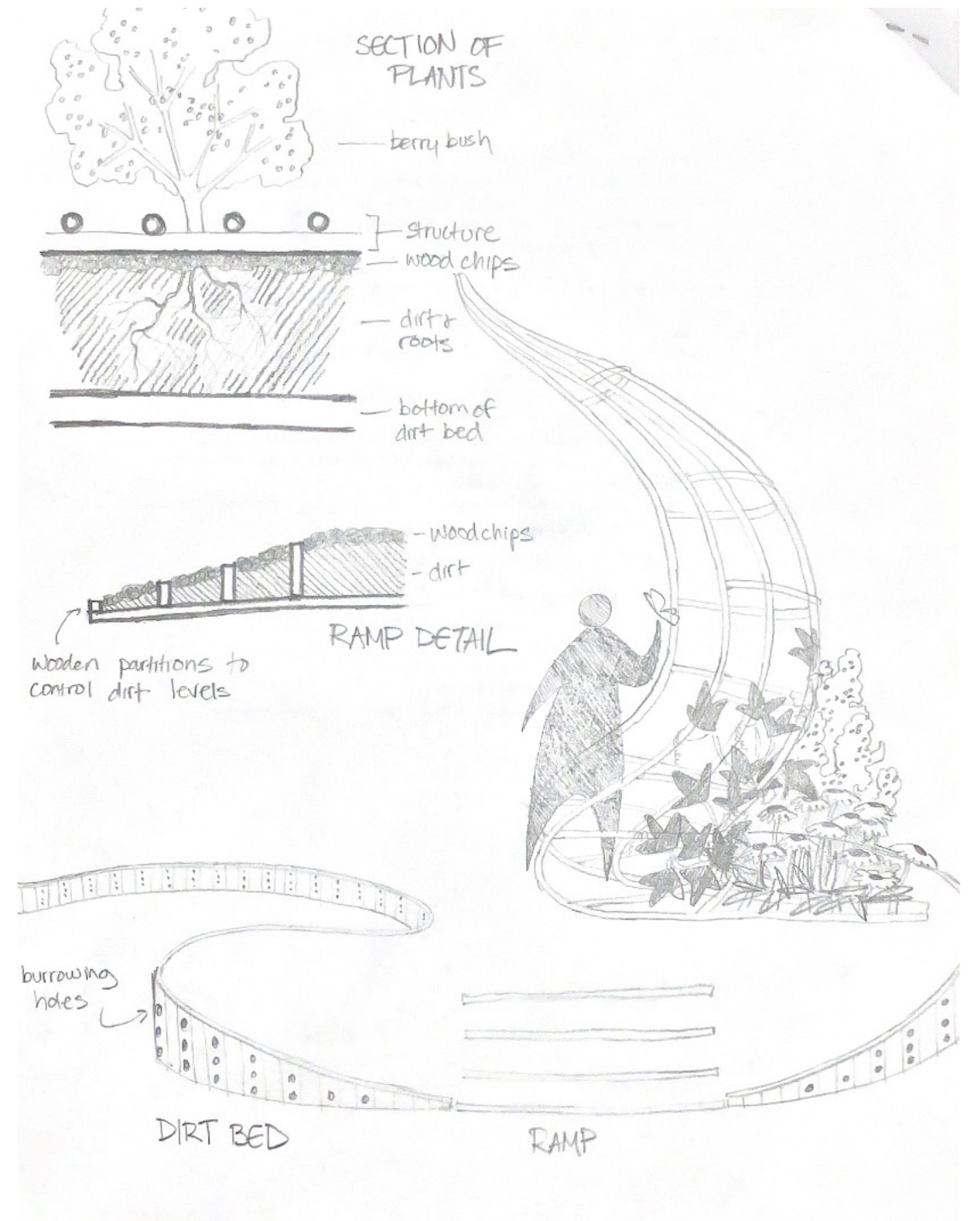


02 - Interior elevation





01 - Site plan



01 - Drawing

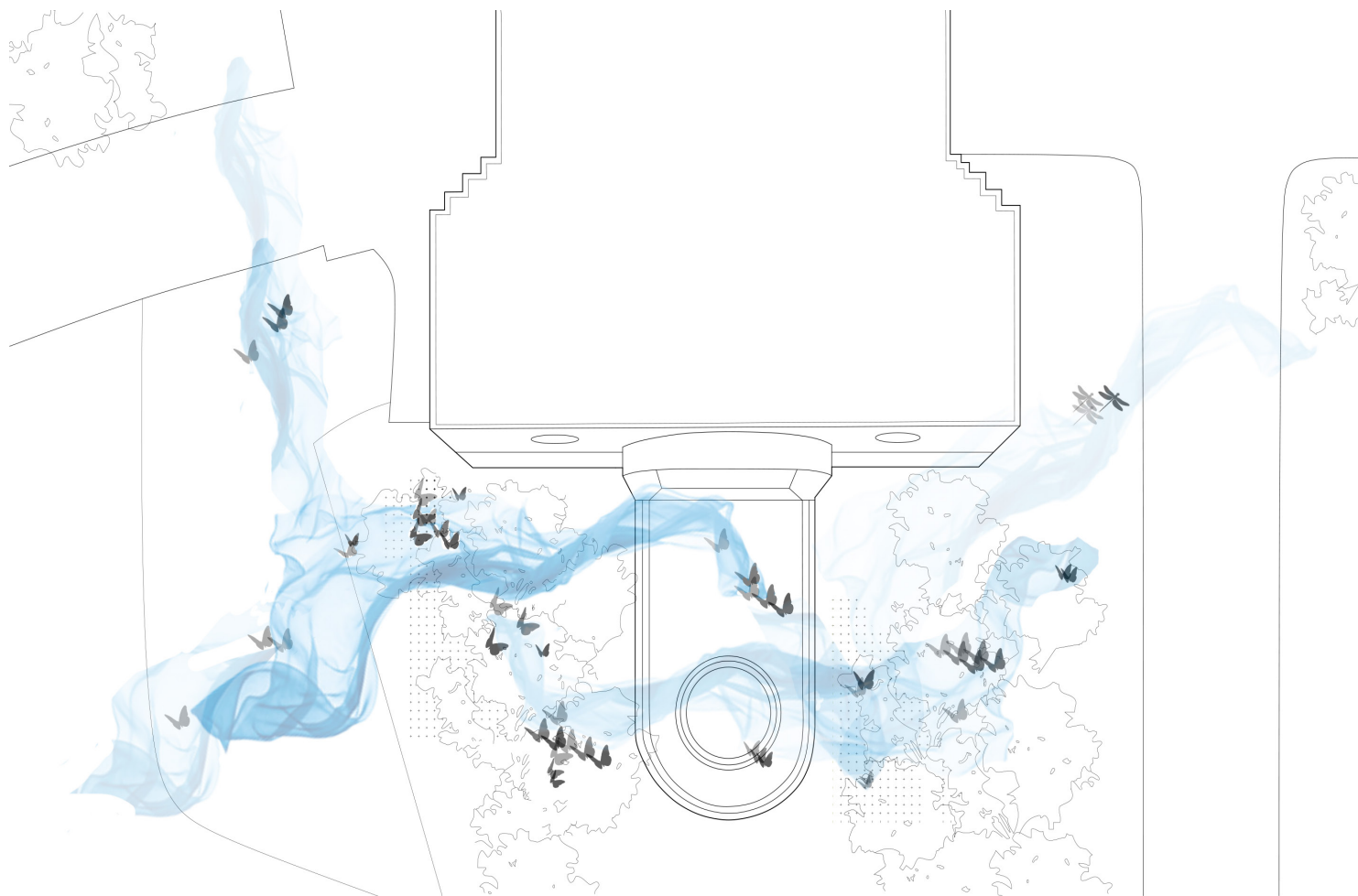


01 - Concept Model

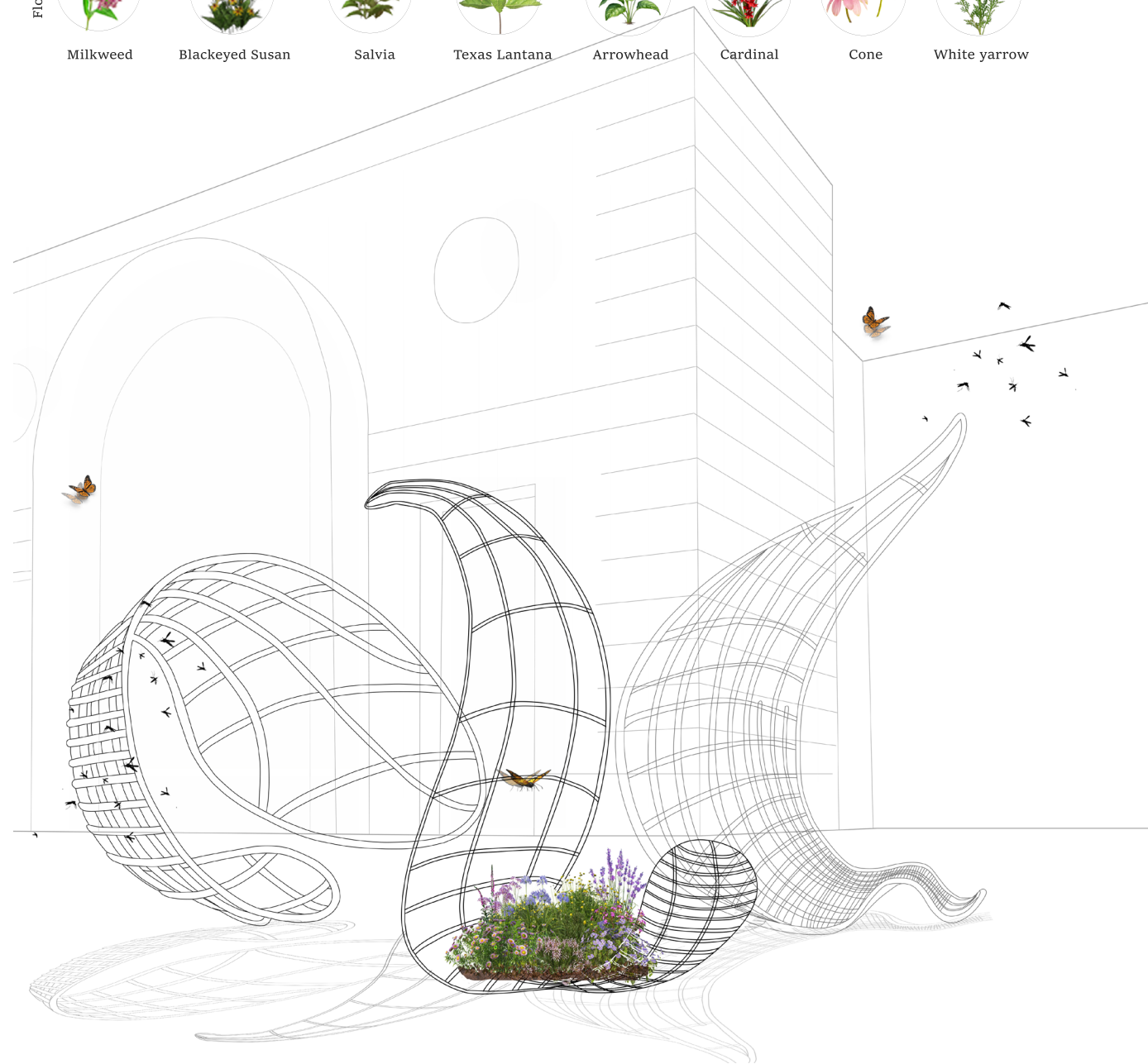
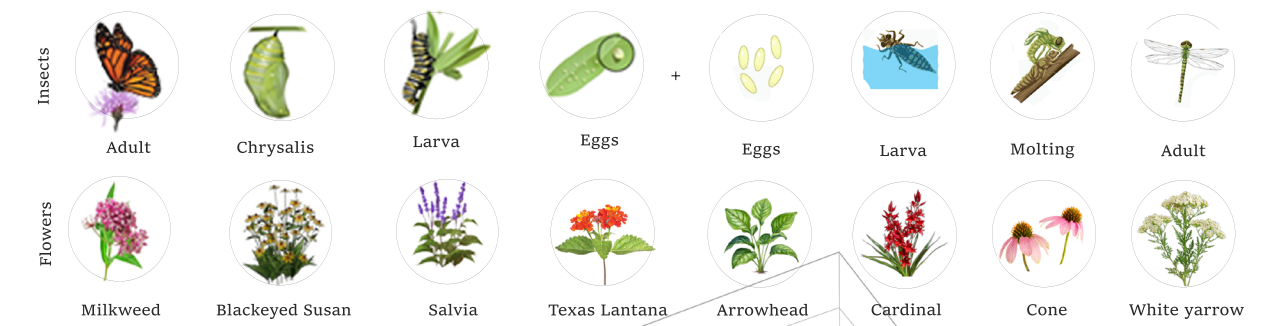


01 - Elevation

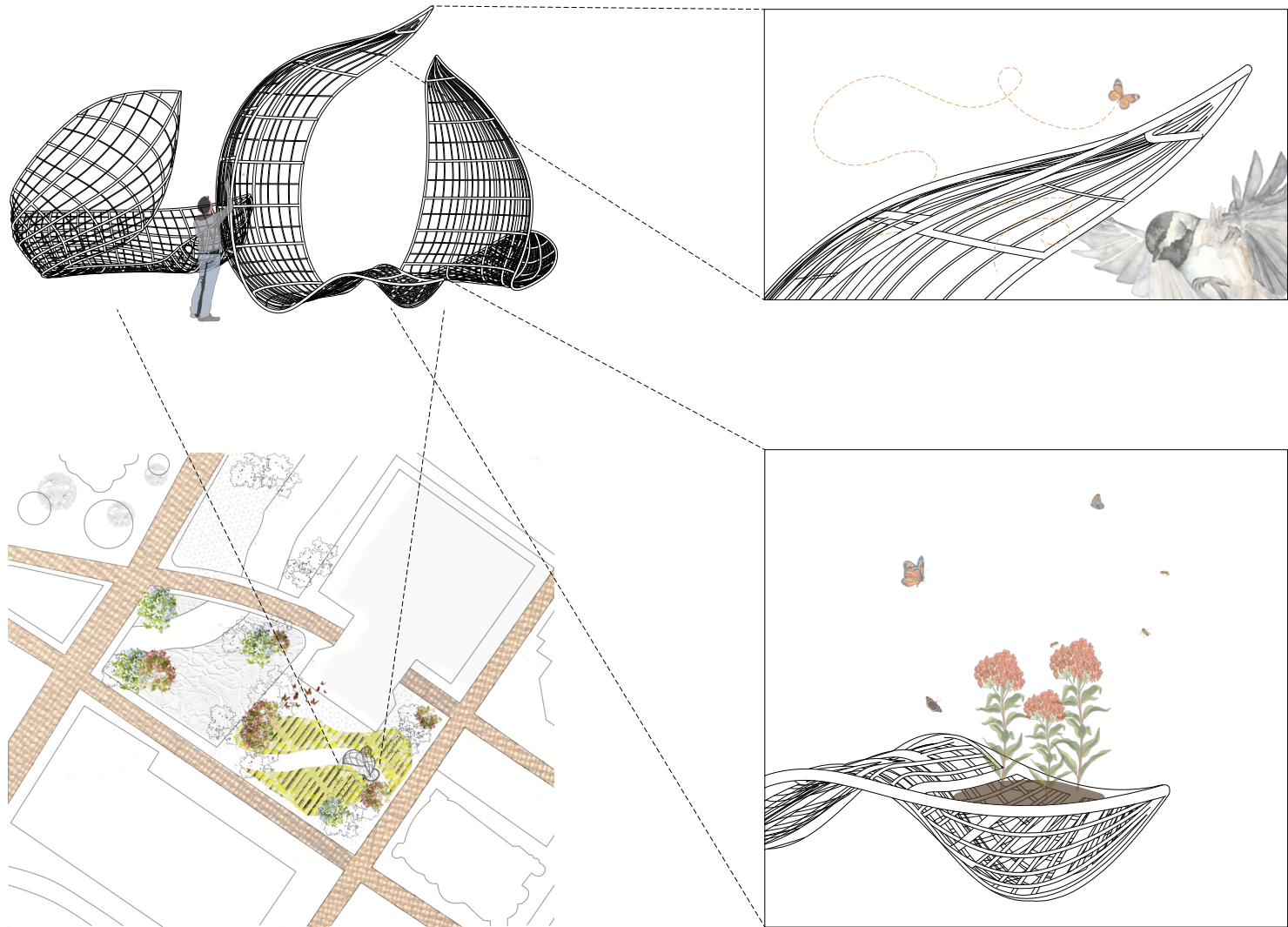




01 - Migration Diagram

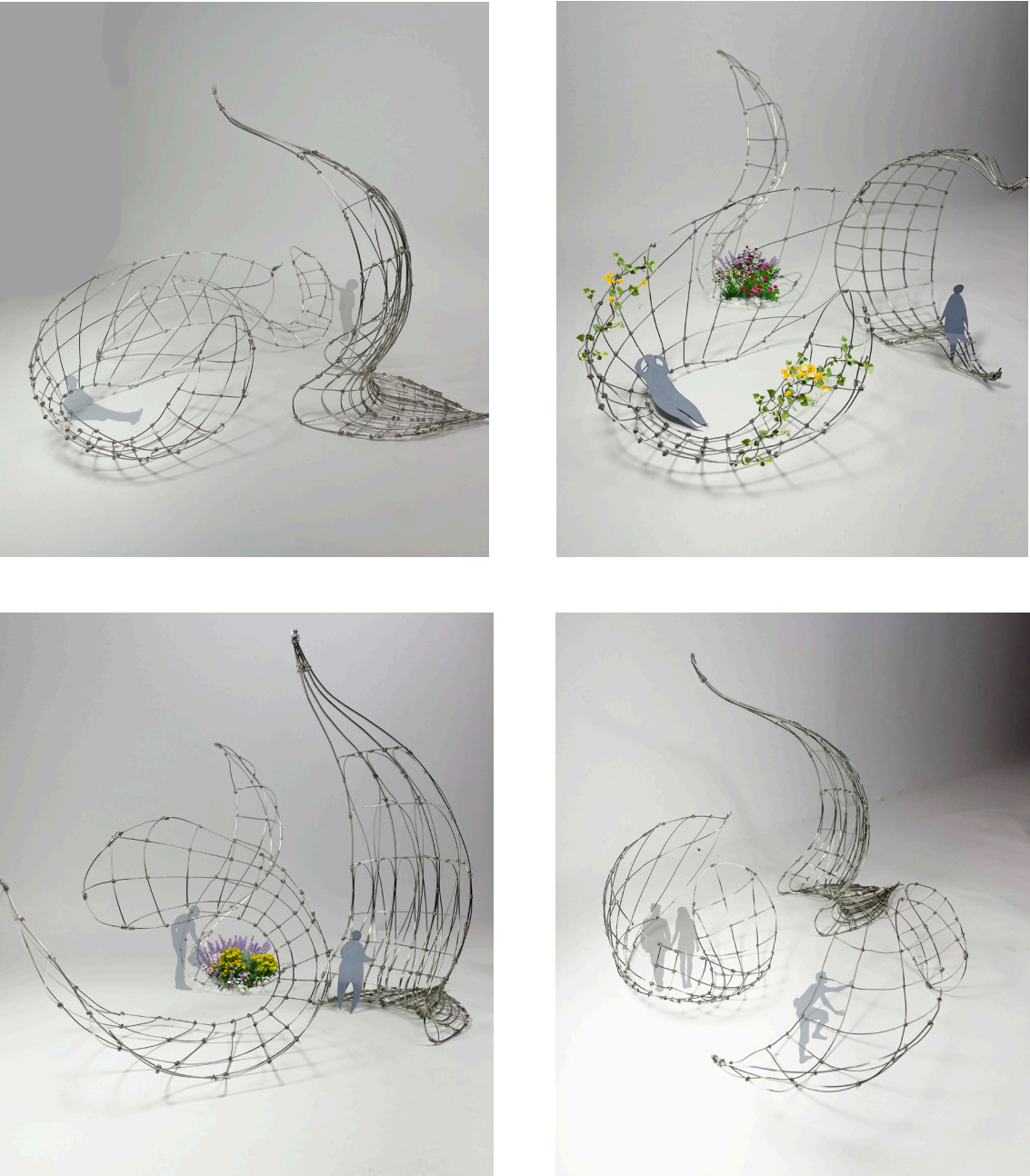


01 - Species Detail



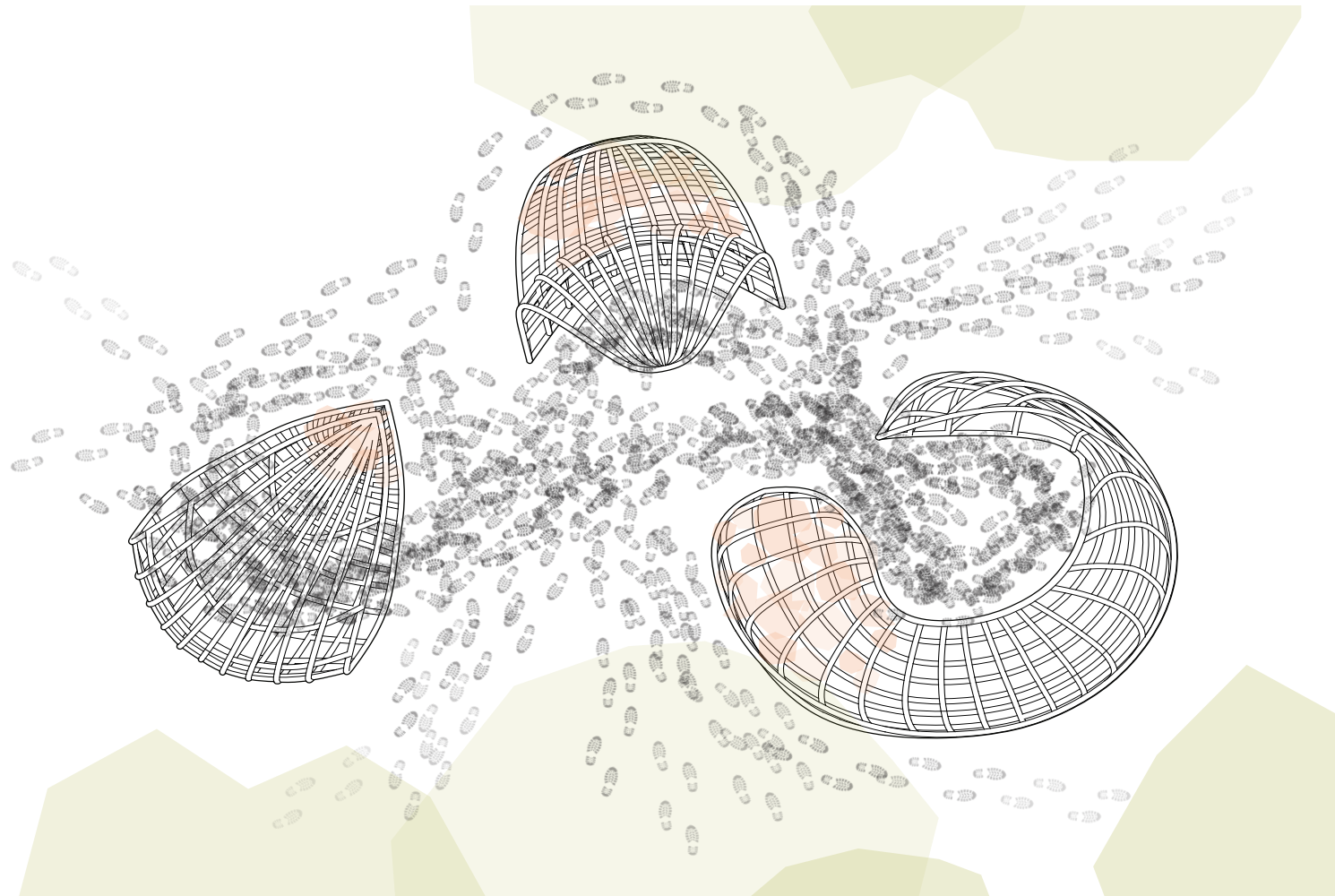
Fish Plaza  
501 Texas Ave, Houston, TX 77002

01 - Detail Section



02 - Concept Model



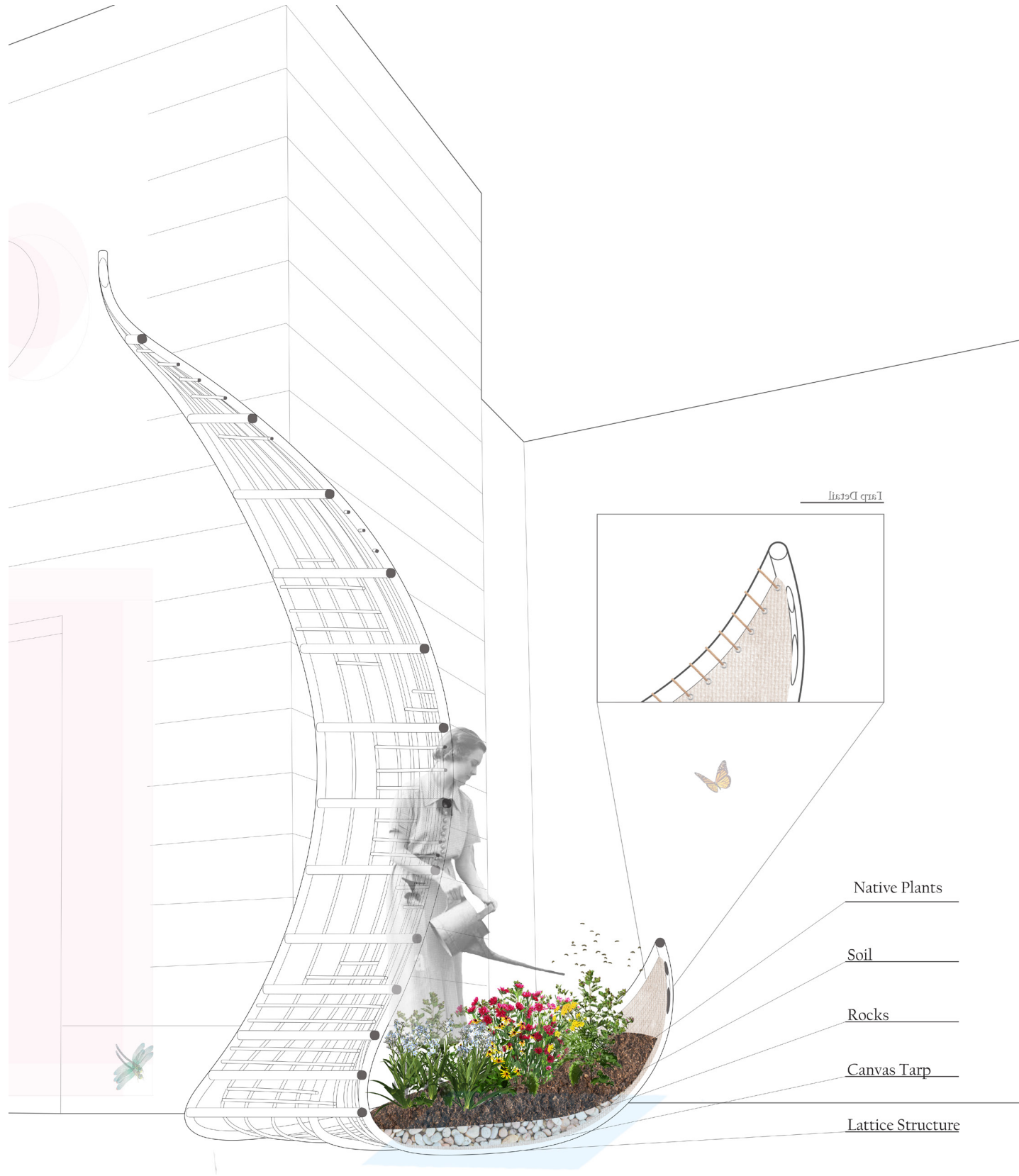


01 - City Movement



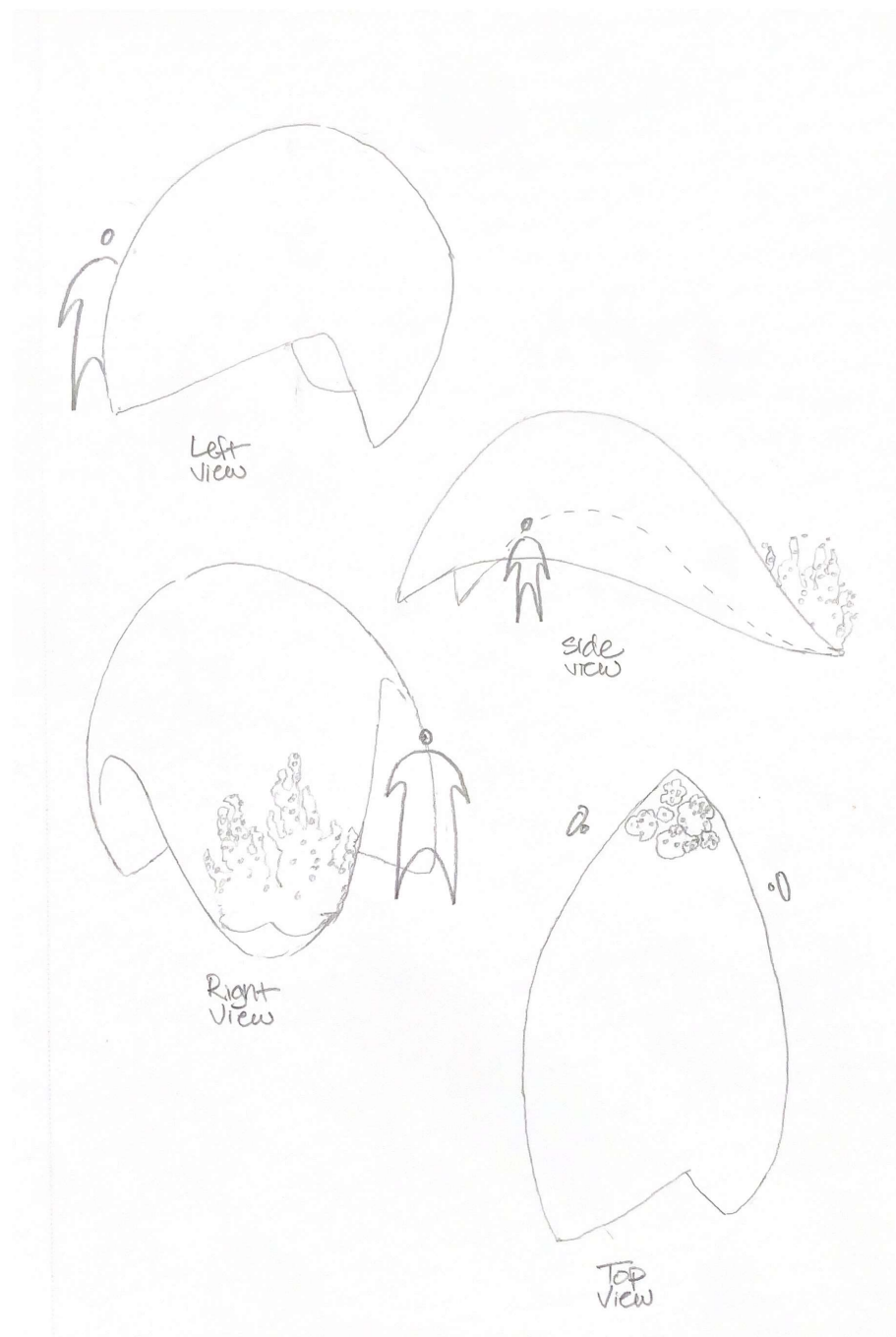
01 - Rendered Perspective



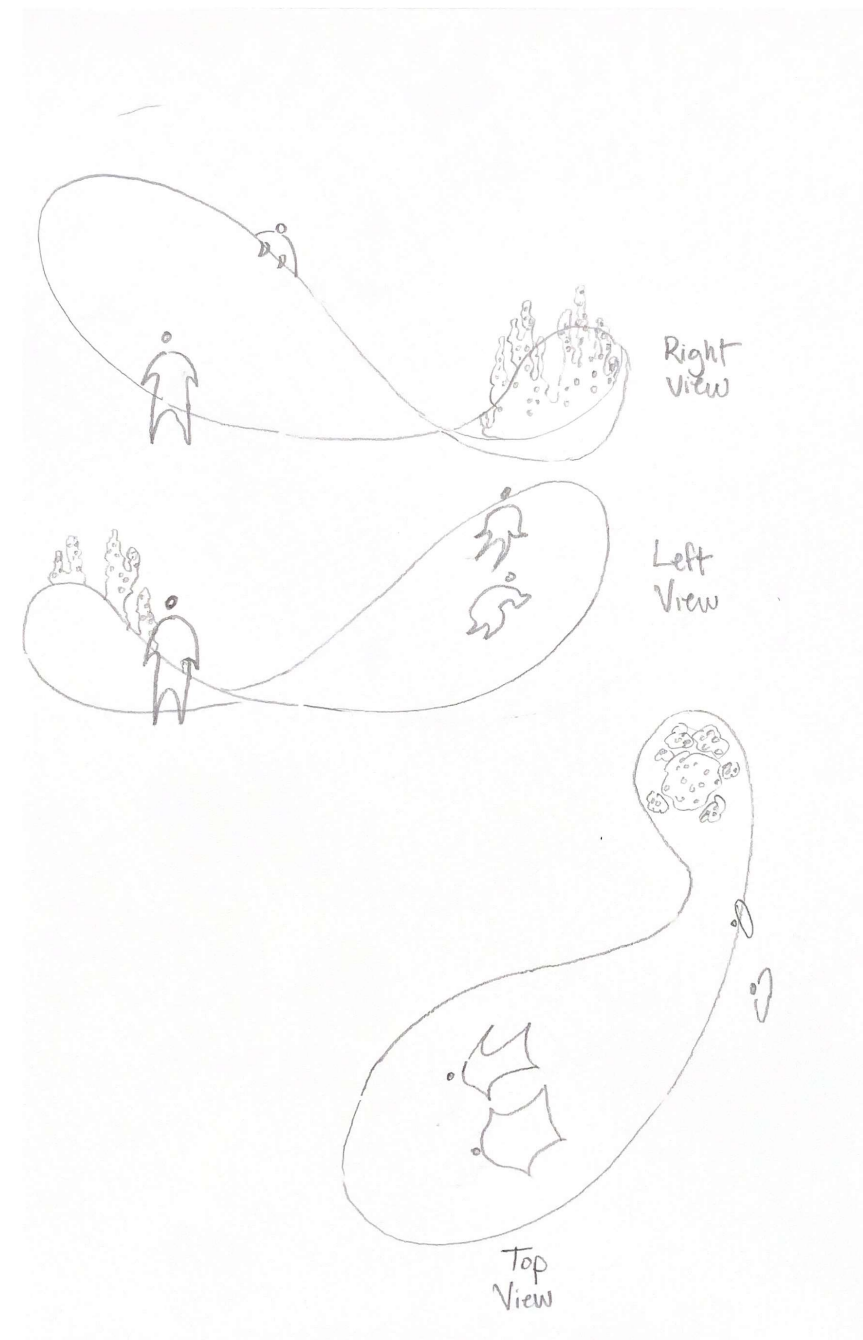


01 - Section

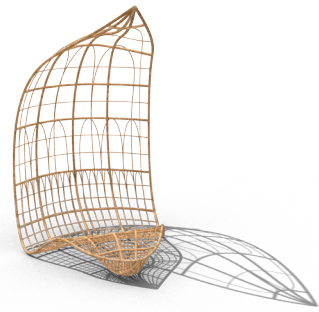
## Project 3



01 - Concept iteration

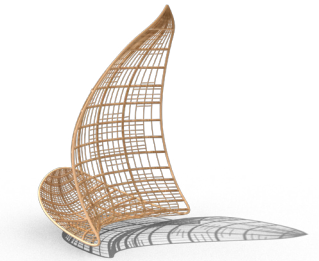


01 - concept iteration



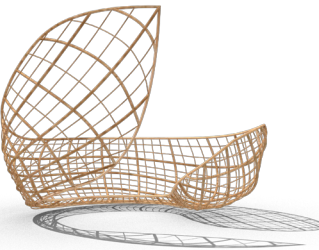
### Glide

Coasting along the concrete jungle, this wing provides seating with overhanging shading to keep cool in the Houston sun. In addition to the planter, the denser lattice towards the bottom helps anchor this to the plaza while keeping it movable.



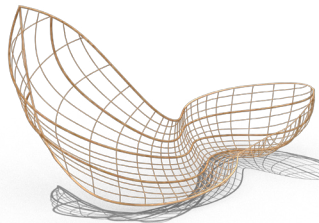
### Flutter

In the midst of a lively flight, crawling plants grow up alongside the towering lattice. The varying sizes of the openings allow different pollinators to pass through, and present a barrier against predators.



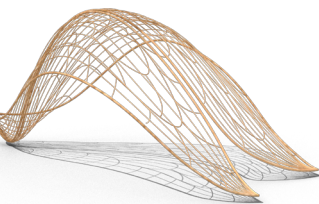
### Unfurl

Wings opening up to greet the day. They embrace the city's inhabitants with seating that extends into an elevated planter. With the wings curving in on both sides, it provides its human and non human users a sense of privacy in the bustling city.



### Twirl

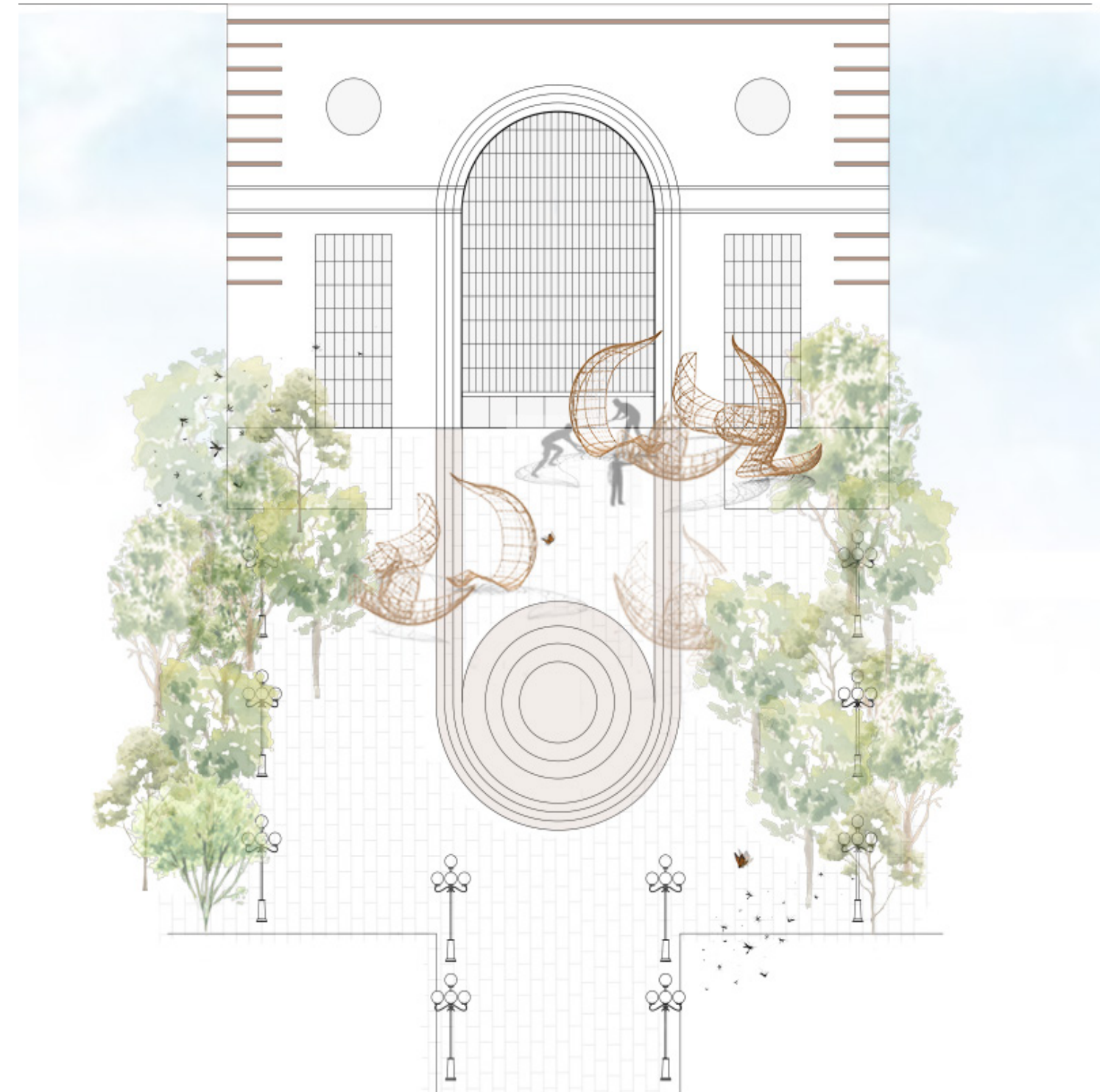
Twisting with the changing winds, these wings present two different areas for people to inhabit. One, along the curve of the wing, separated from the plants by a layer of lattice. The other, a long seat attached to the planter.



### Lift Off

A wing bursting with the anticipation of flight, yet grounded by a strategically placed planter. It provides a unique immersive experience through its more realistically wing-like shape and lattice.

## 01 - Planter Catalogue



## 01 - Planter movement





01 - Planter Drawing

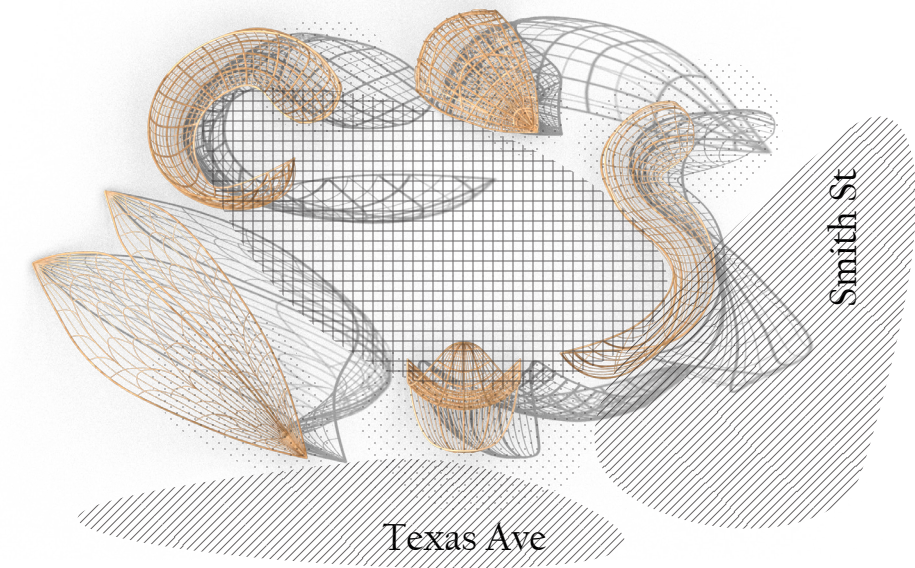
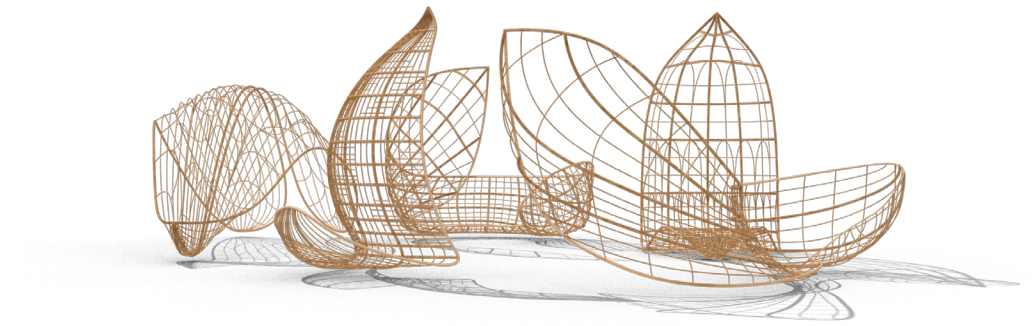


01 - Planter Season





01 - Perspective View



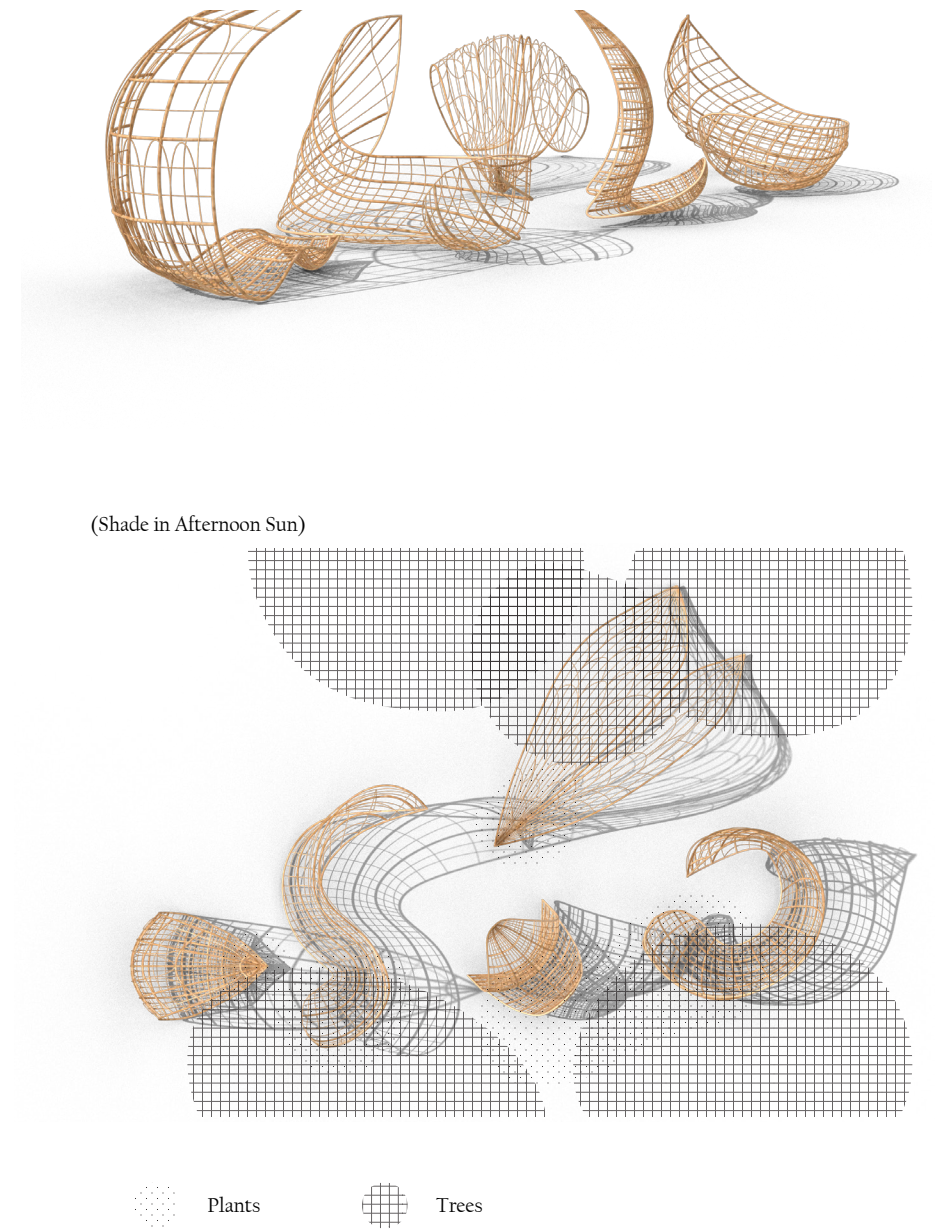
Plants
  Semi-Private
  Street Exposure

01 - Perspective Diagram





02 - Perspective View

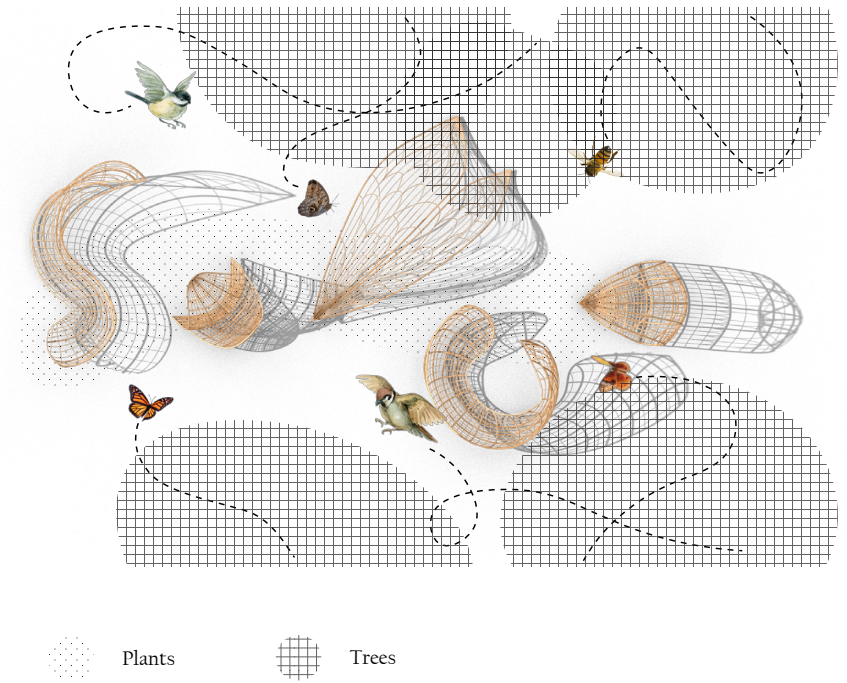
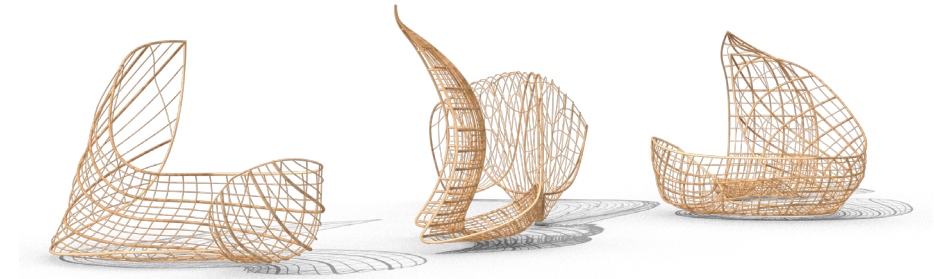


01 - Perspective Diagram





03 - Perspective View



Plants Trees

01 - Perspective Diagram





1) Loosely Wrapping Twine Over Burlap



Detail

- Twine is wrapped from both directions to criss-cross
- More economical
- Effectiveness varies



2) Two Layers of Burlap



Detail

- One layer is prone to unraveling
- Two layers is more stable, but can still unravel
- Stays together through friction
- Most rough



3) Blanket Stitch, Large



Detail

- More organized
- Uses less fabric
- Uses a lot of thread



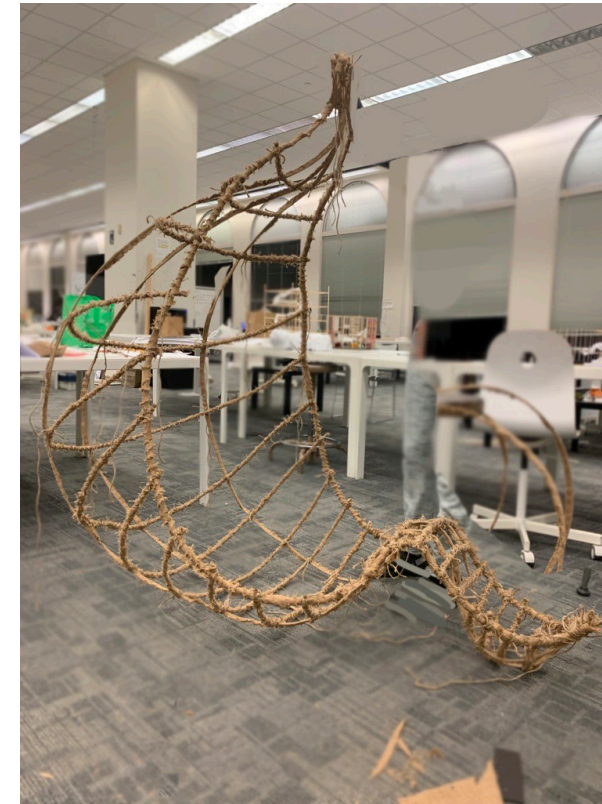
4) Blanket Stitch, Small



Detail

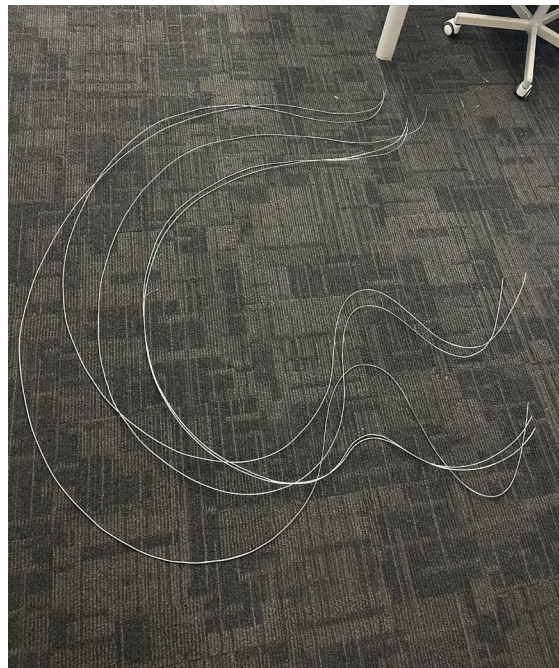
- Neater and more subtle than #3
- Uses less thread

## 01 - Material Testing



## 01 - Model Progress





02 - Model Progress



0 - Model Photos





02 - Model Photo