

Alert in St. Cruz



Illustrated & Written By Pran G



SRISHTI MANIPAL
INSTITUTE OF ART, DESIGN & TECHNOLOGY
BENGALURU
(A Constituent Unit of MAHE, Manipal)



MANIPAL
ACADEMY of HIGHER EDUCATION
(Institution of Eminence Deemed to be University)

Copyrights 2024-2025
Student Document Publication
(for private circulation only)

All Rights Reserved

Thesis Project
(Undergraduate Professional Programme)
Srishti Manipal Institute of Art, Design and Technology
Bangalore - 560064 Karnataka

No part of this document will be reproduced or transmitted in any form or by any means, electronically or mechanically, including photocopying, scanning, photography and video recording without written permission from the publishers namely **Gupta Pranjal Manish (215310020)** and Srishti Manipal Institute of Art, Design and Technology, Bangalore.

Written, edited and designed by
Gupta Pranjal Manish (215310020)
Printed at
Yelahanka New Town, Bangalore

Alert in St. Cruz


Illustrated & Written By Pran G

Out from the river's
cooling grace,
A crocodile sought a
resting place.





Splish-
Splash!



The sun was high,
the current mean,
It crawled ashore
through land unseen.





It found a quiet,
shadowed space
Behind a car,
a small, still place.




But peace is brief
where people dwell,
And soon it heard
the rising yell.



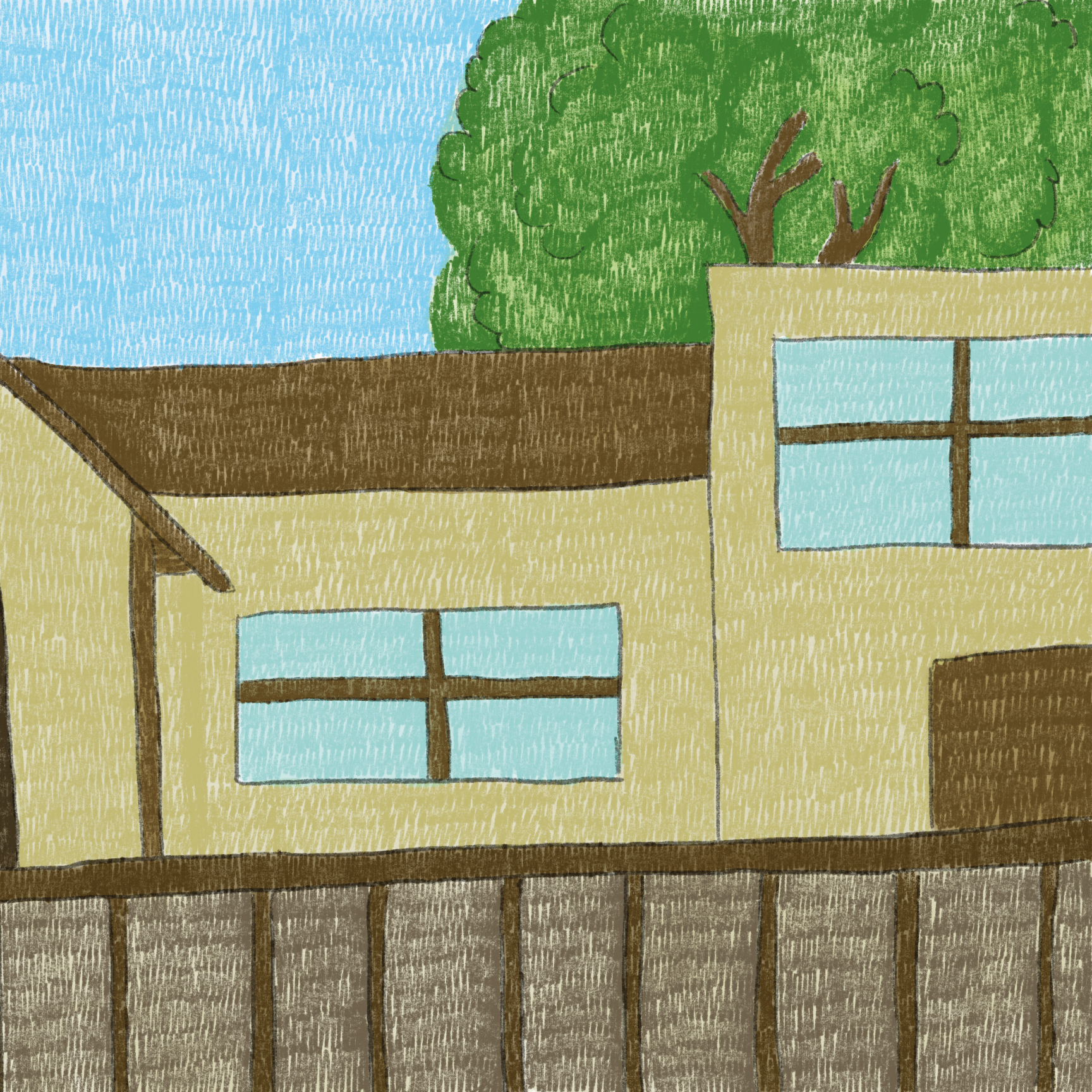


HHH!



Sherry heard the
rising cries,
Screams and flashes,
fear and flight,

AAAAHHHHHHH!
Grrrrr!



Her TV lit up,
“Huge crocodile loose!”
“Stay inside!”
a warning blared





People pushed and
shoved, eager for views,
Blinded by panic, they
spread their blues.



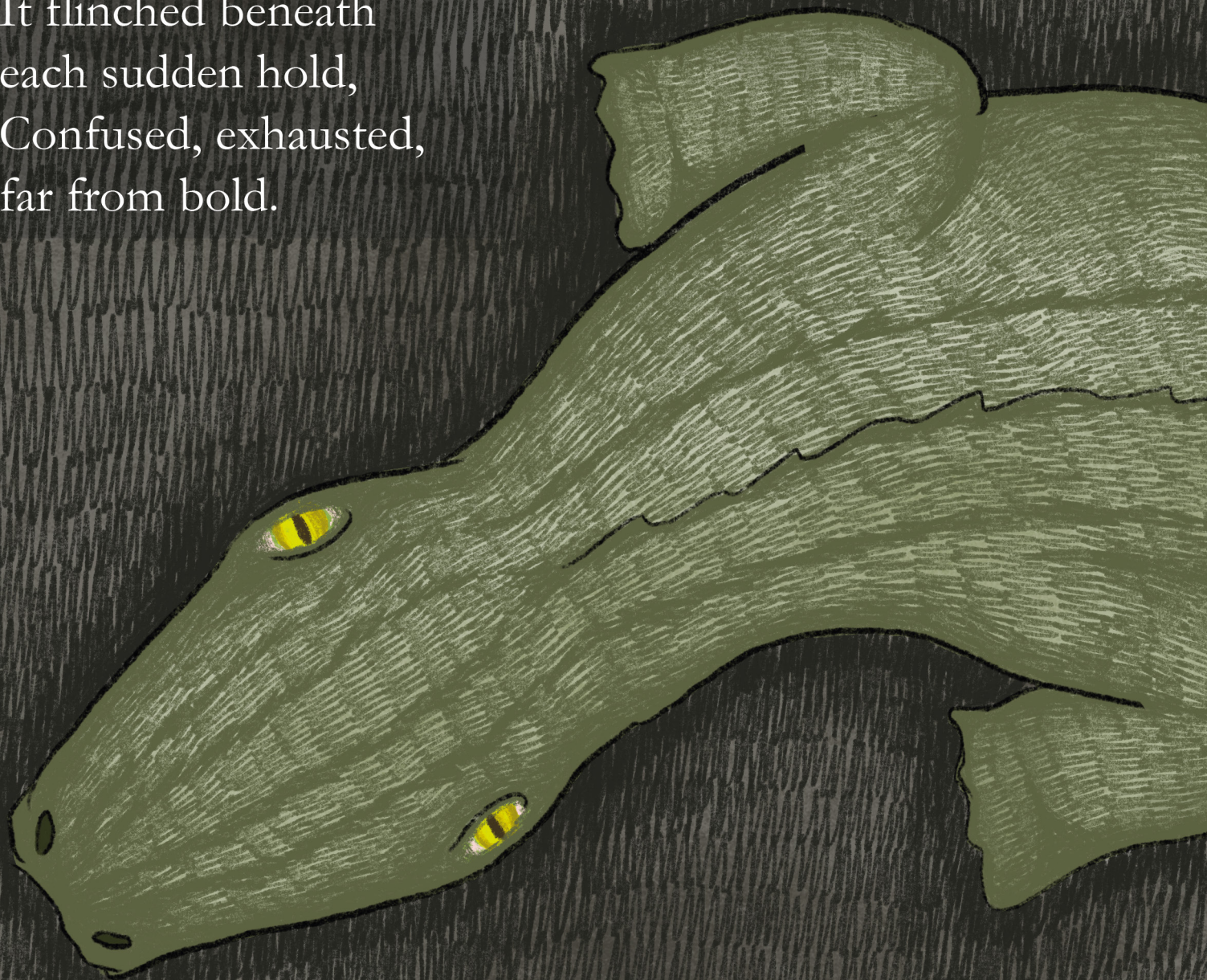


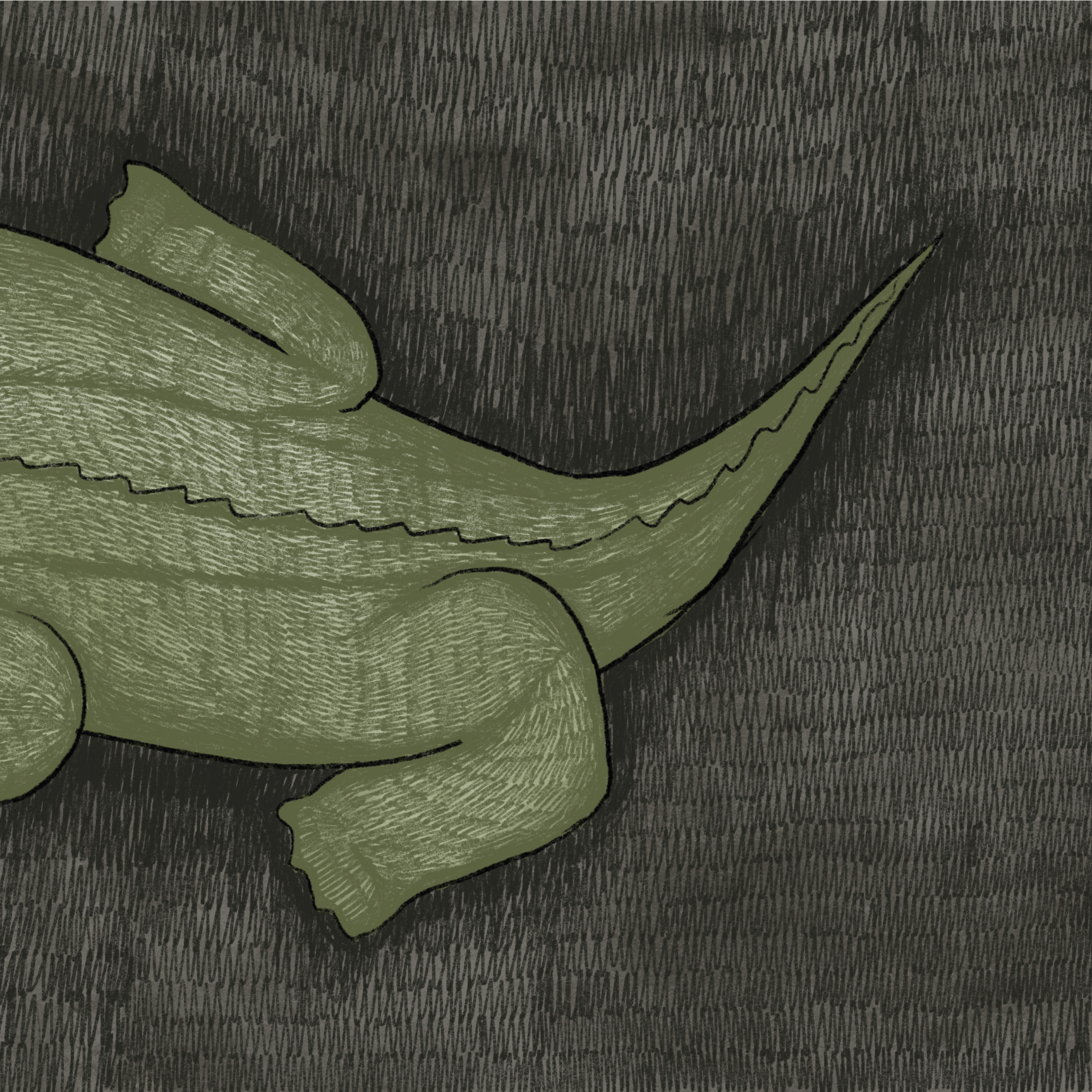


Hands tied its jaws,
cloth covered its gaze,
While it fought for peace
in this cruel maze.



It flinched beneath
each sudden hold,
Confused, exhausted,
far from bold.

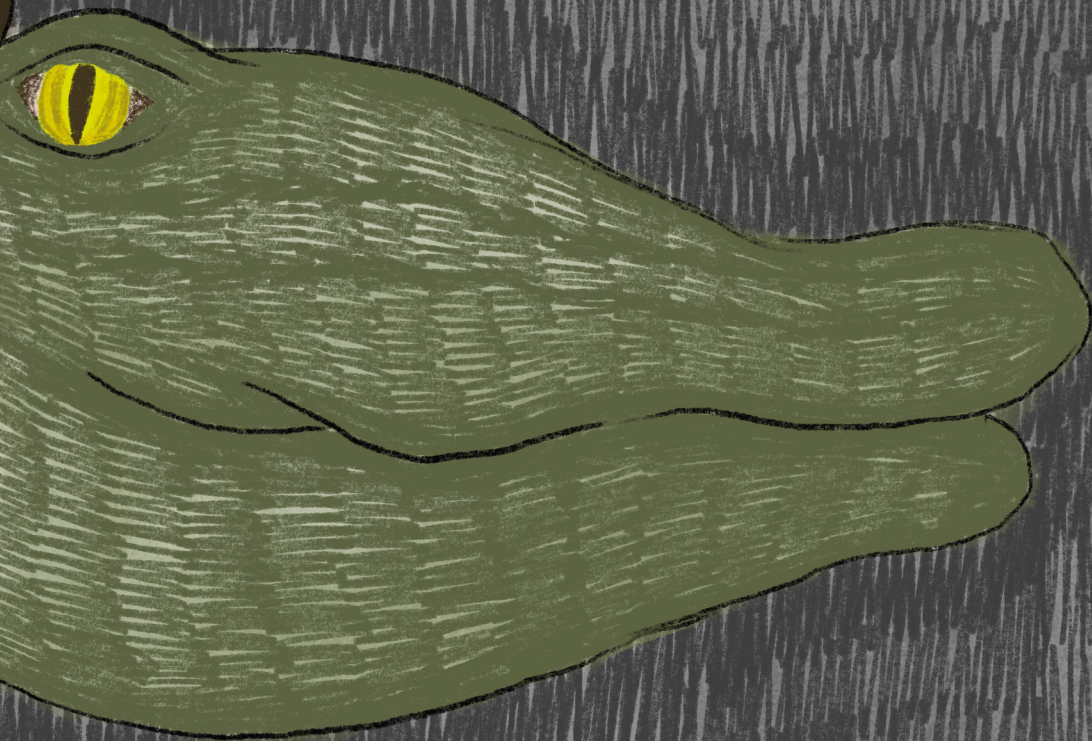




It's going
to
attack us!



I'm just
here
to rest...



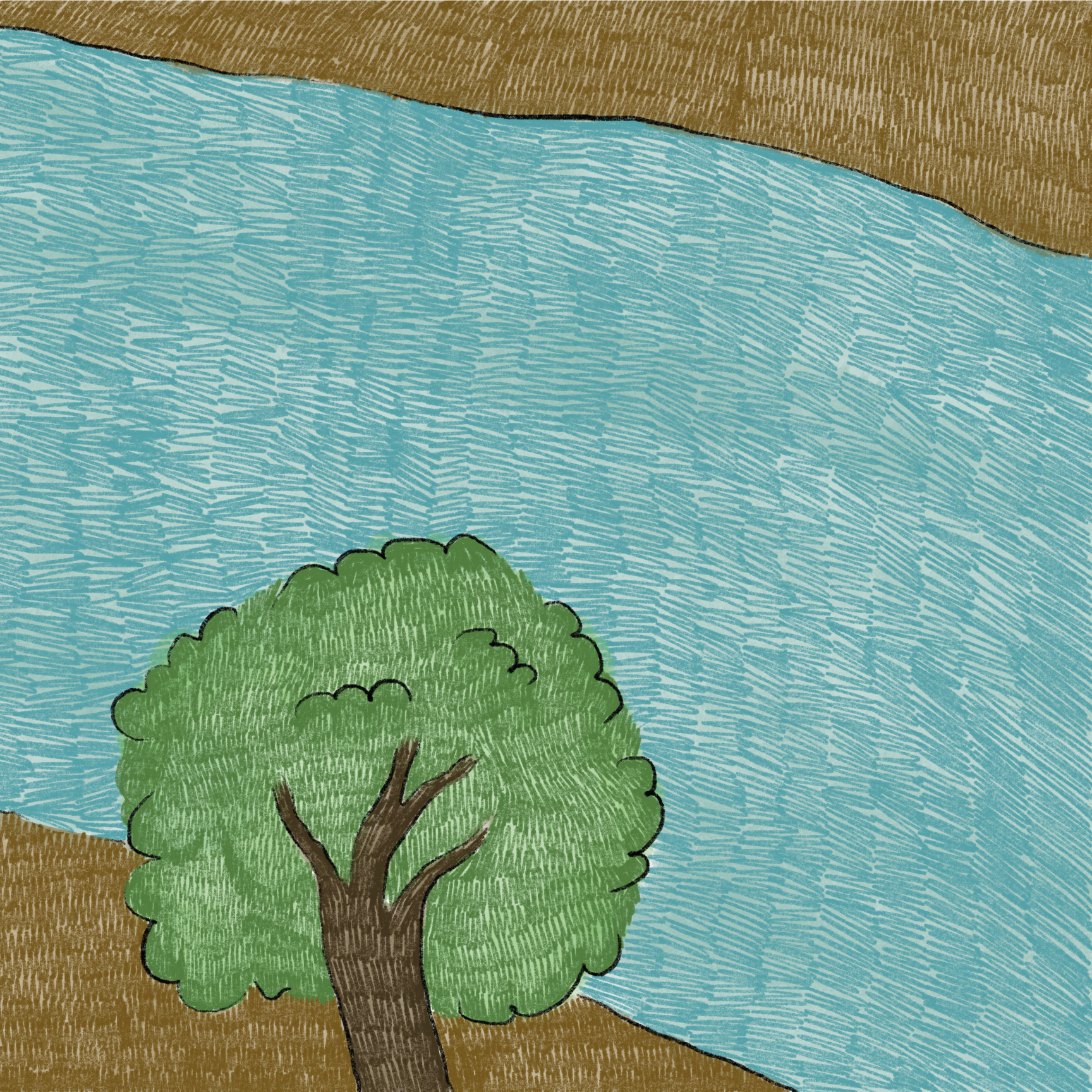
Sherry, heart firm,
stepped ahead,
She called the team
with practiced grace





To guide it back to
water's place.
No need to fight, just
slow return to fading light.





In moments of unexpected animal encounters, like the crocodile resting behind a car in Sherry's neighborhood, our first response is often fear, amplified and shaped by how media frames the story. Headlines scream "danger" and "attack" without context, turning tired, displaced creatures into threats. The crocodile in St. Cruz wasn't hunting or charging, it was simply seeking shade, worn out and lost. Yet it was met with panic, restraint, and flashing cameras.

This story reveals a deeper issue: we mistreat animals not because they pose real danger, but because we are taught to see them through a lens of fear. Media often strips animals of their context, framing them as villains in a narrative that sells urgency and spectacle. As a result, public perception shifts from empathy to hostility, and instead of helping these creatures return safely to their habitats, we react with aggression, control, or apathy.

But as Sherry knew, having worked closely with snakes and misunderstood wildlife for years that these animals are not invaders.

They are simply trying to survive.

References:

<https://www.britannica.com/animal/mugger>

https://en.wikipedia.org/wiki/Mugger_crocodile

https://www.iucncsg.org/365_docs/attachments/protarea/17_C-f8a-d64af.pdf

https://uk.news.yahoo.com/enormous-crocodile-wanders-village-in-dia-150000565.html?guccounter=1&guce_referrer=aHR0cHM6Ly-93d3cuZ29vZ2xlLmNvbS8&guce_referrer_sig=AQAAAJuMQug-5pOgRB2AGTRNvDQqFBUEOYTyej-5UxLlSdOHoR7Ruzjo389d-GlK7P5vhI6eAzEdeC99h-B6iiFUJ93HHK76eK3BkT445wV9ZlSNt-c5E-mQZ2r87tZ-abSm5jcyQ83T5oOaXg_upacfjeRykTDsTwAmTL-NaOkYCLnTkM7U

<https://www.instagram.com/ingoa24x7/reel/DG94tRqvAU6/>

A recent crocodile sighting in Goa was misrepresented by the media as a threat, despite the animal's harmless behavior. This project challenges such fear-based portrayals and highlights the role of local knowledge in promoting peaceful human-wildlife coexistence.



SRISHTI MANIPAL
INSTITUTE OF ART, DESIGN & TECHNOLOGY
BENGALURU
(A Constituent Unit of MAHE, Manipal)



MANIPAL
ACADEMY of HIGHER EDUCATION
(Institution of Eminence Deemed to be University)

