

JELLY DOME

TECHNICAL SPECIFICATIONS



DIMENSIONS:

7.8" (D) x 7.8" (W) x 6" (H)

BULB:

LED
NON-FLICKER
7W / E26 / G45

COLOR TEMPERATURE:

3000K (WARM WHITE)

CORD:

110V US PLUG
FABRIC WITH TOGGLE SWITCH

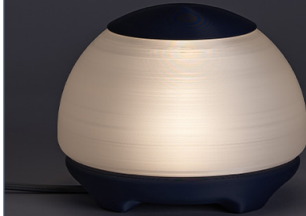
MATERIALS:

PLA
HTPLA

MANUFACTURING:

3D PRINT

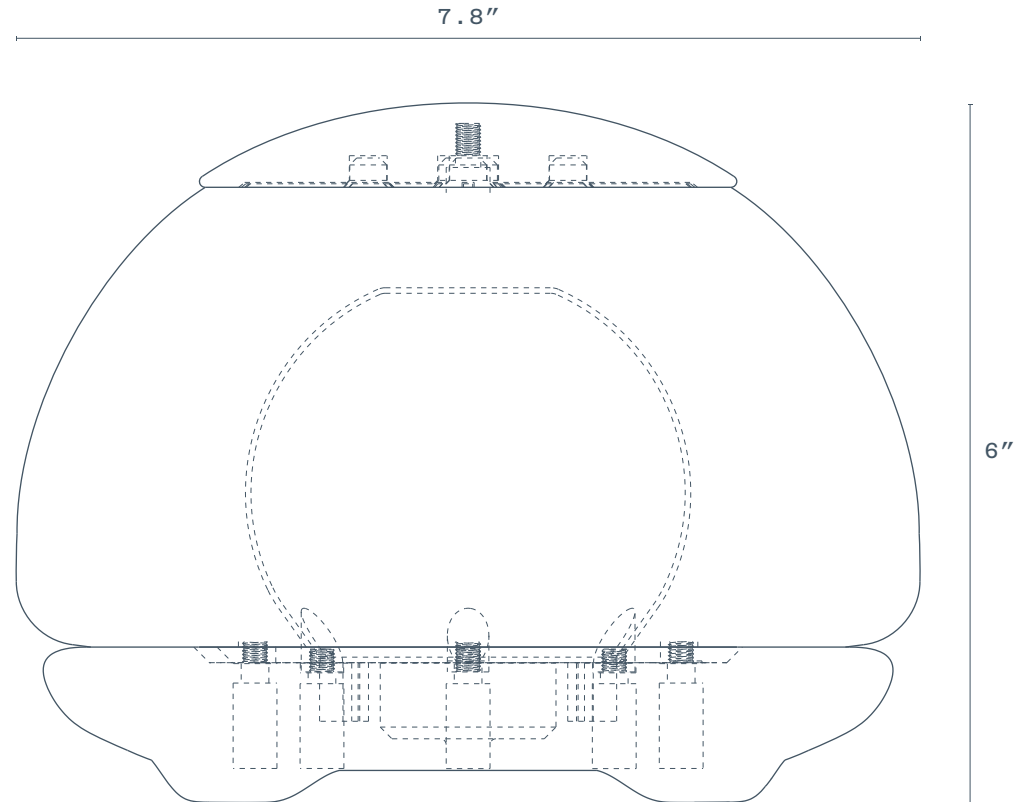
NIGHT SKY
BHJD-001-1



MARTIAN CLAY
BHJD-001-2



SPACE GRAY
BHJD-001-3



JELLY CUBE

TECHNICAL SPECIFICATIONS



DIMENSIONS:

6" (D) x 6" (W) x 10.7" (H)

BULB:

LED
NON-FLICKER
4W / E26 / T10

COLOR TEMPERATURE:

3000K (WARM WHITE)

CORD:

110V US PLUG
FABRIC WITH TOGGLE SWITCH

MATERIALS:

PLA
HTPLA

MANUFACTURING:

3D PRINT

NIGHT SKY
BHJC-001-1



MARTIAN CLAY
BHJC-001-2



SPACE GRAY
BHJC-001-3

