

Relat I

La gesta







## Horitzons de grandesa

Relat I  
La gesta



## Pròleg









991





103











115





511





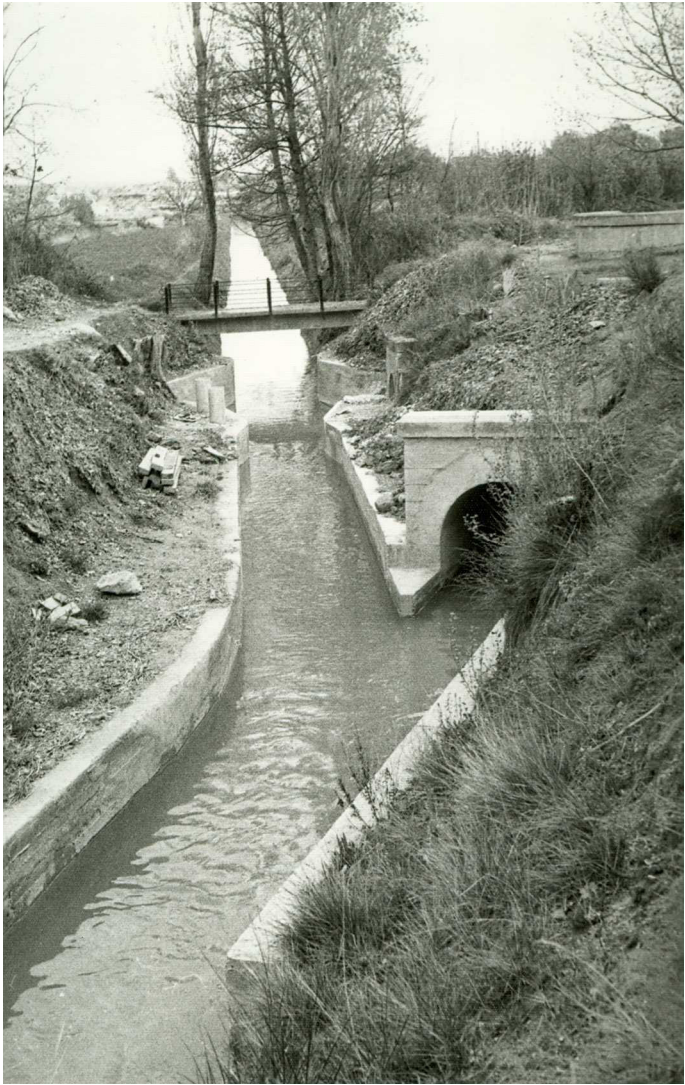
57



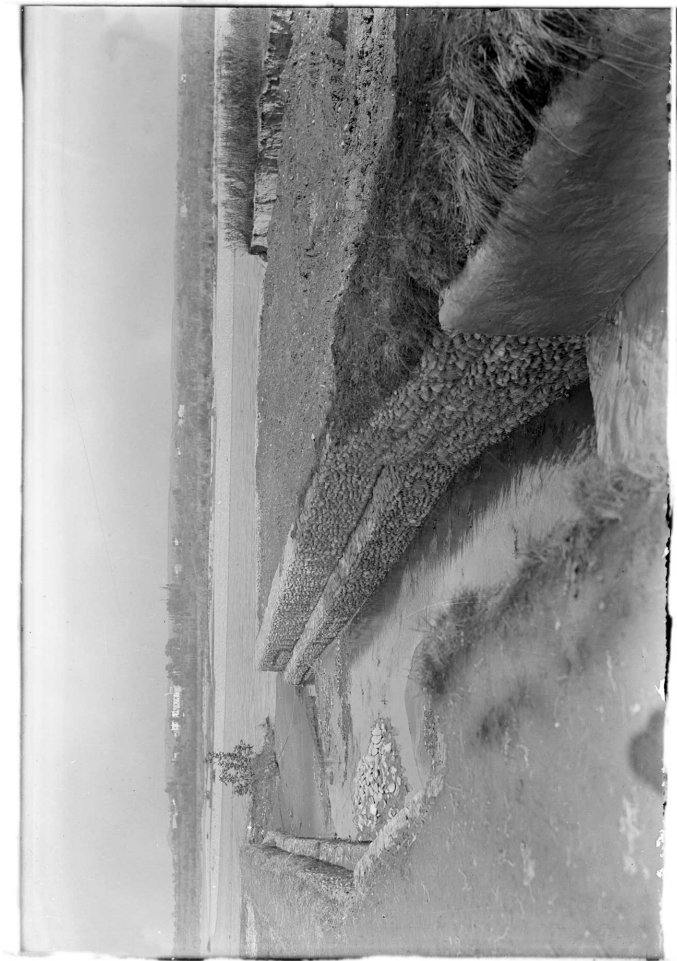








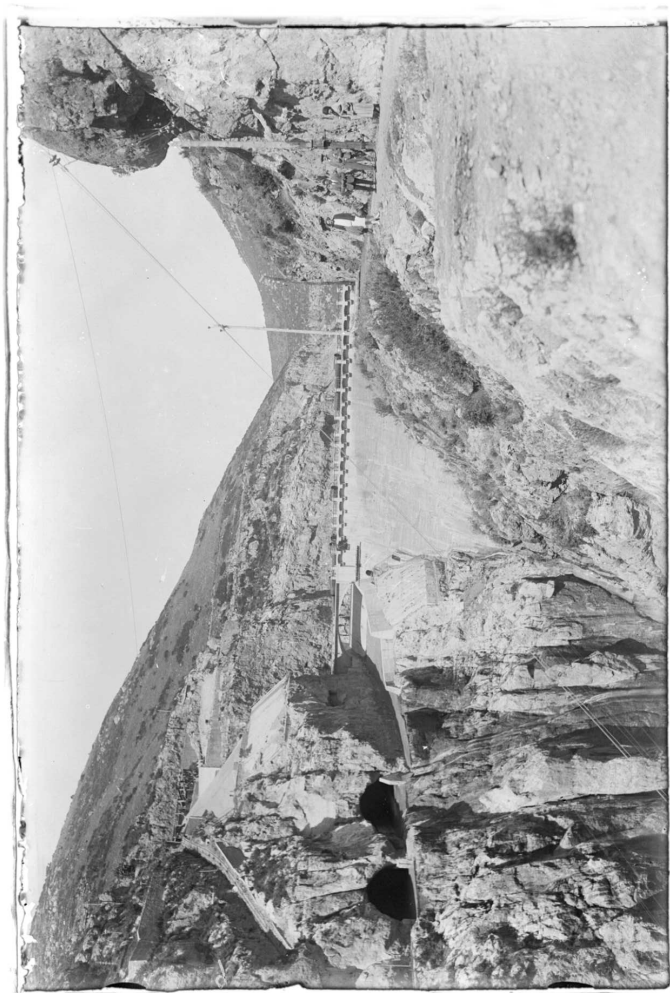


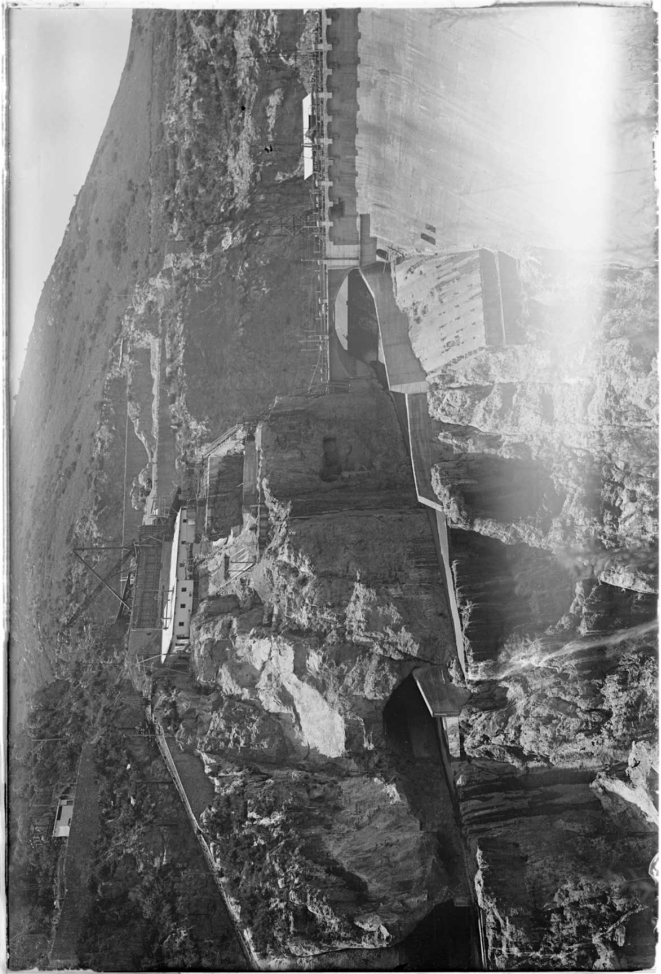


















196





661

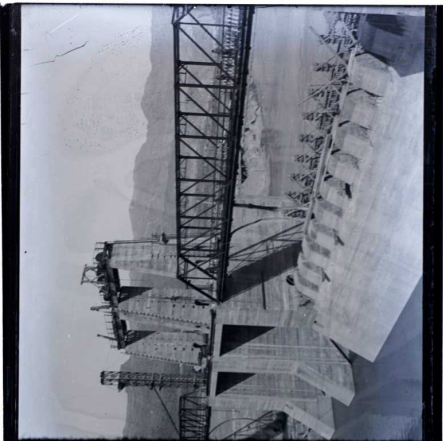






761

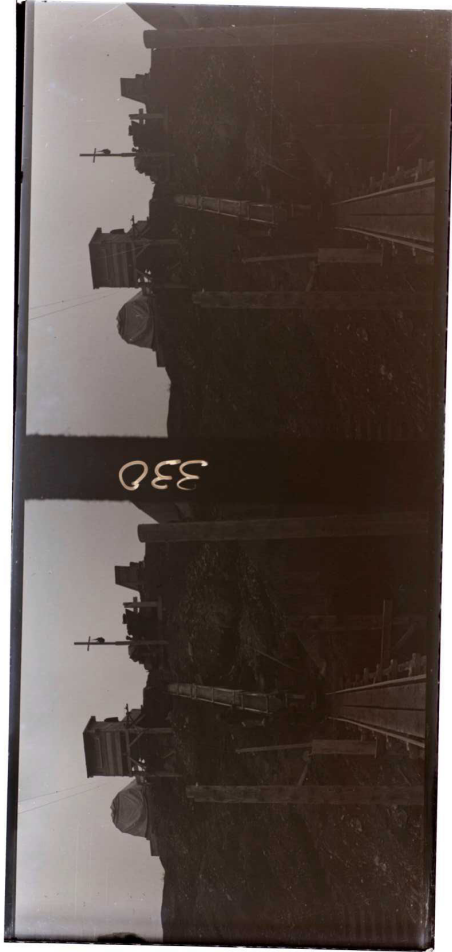




104



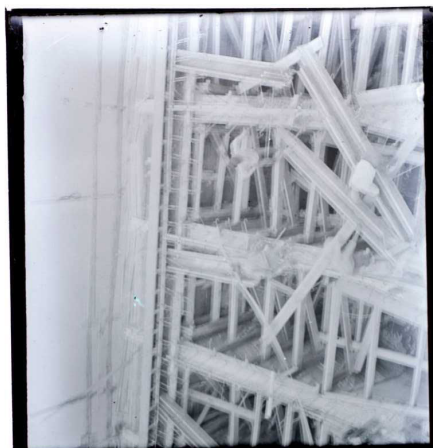






807

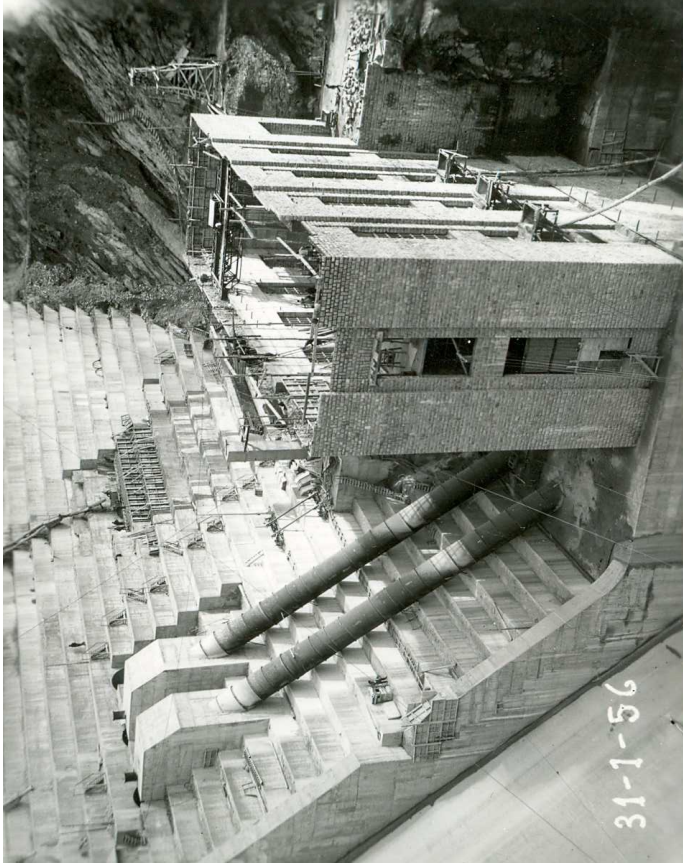




380





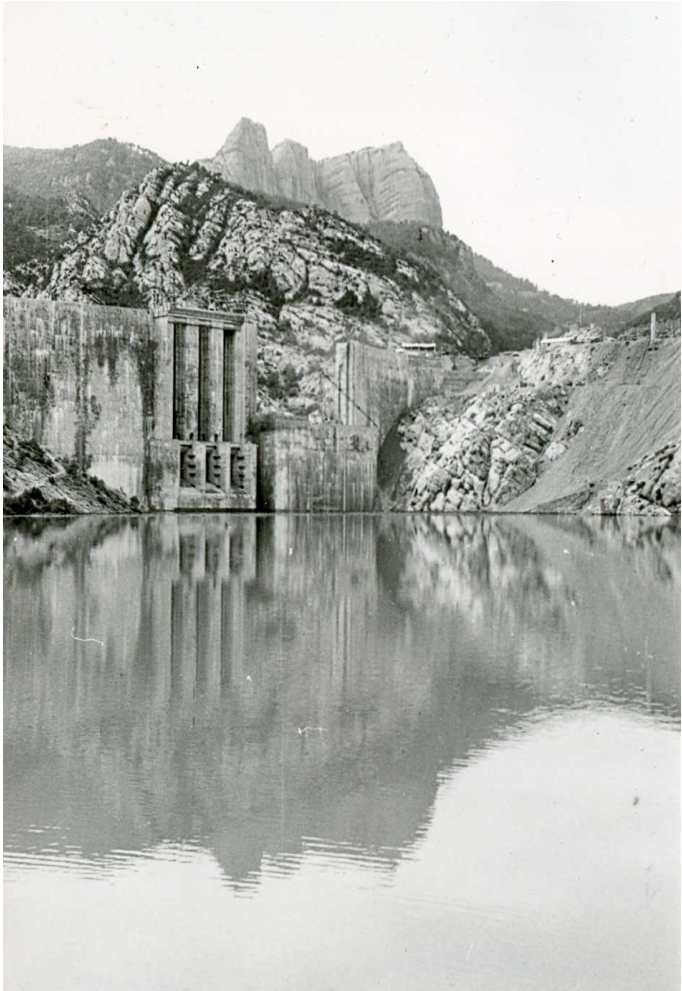




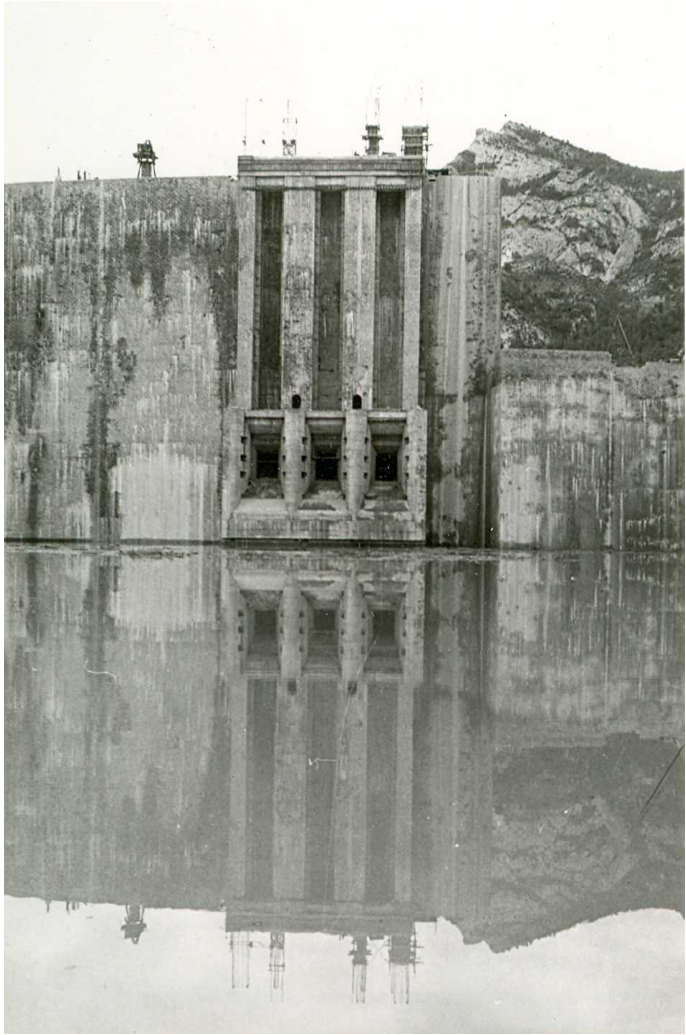


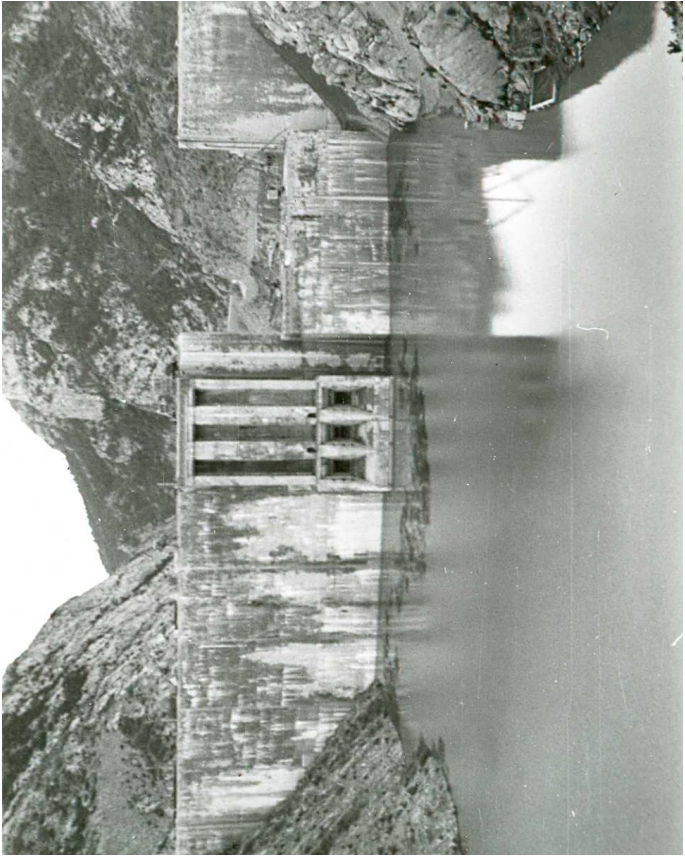


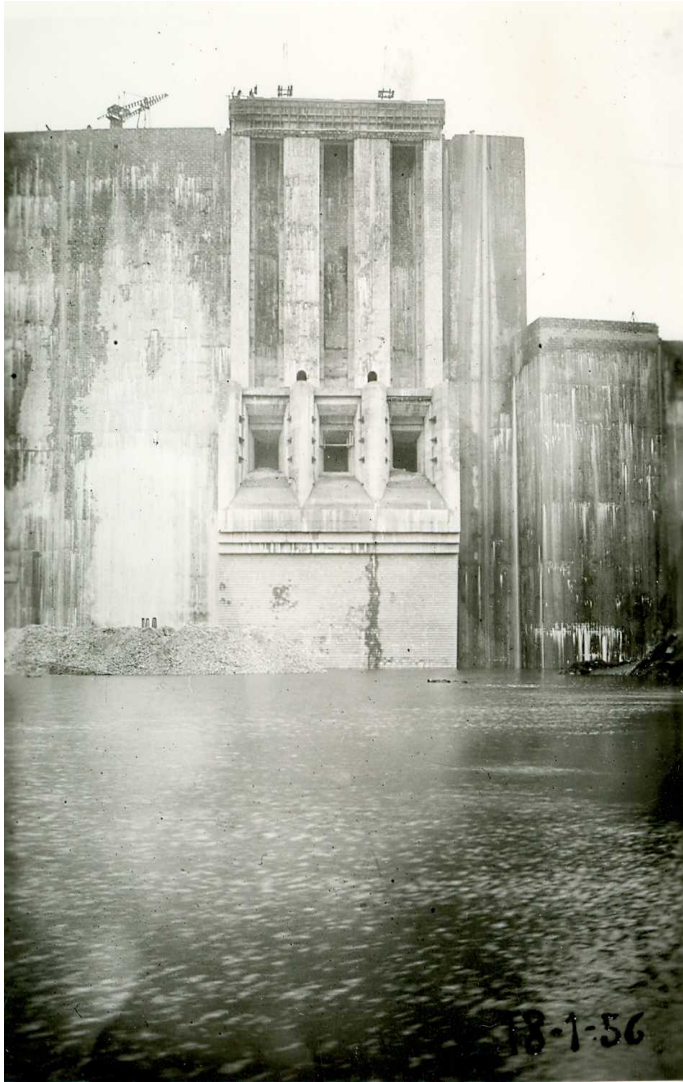




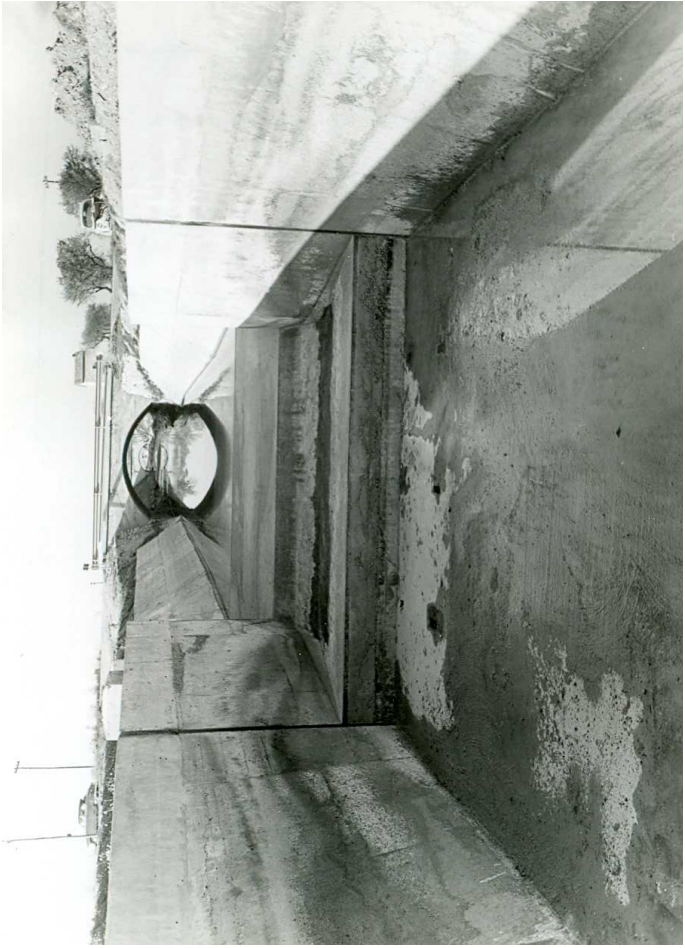


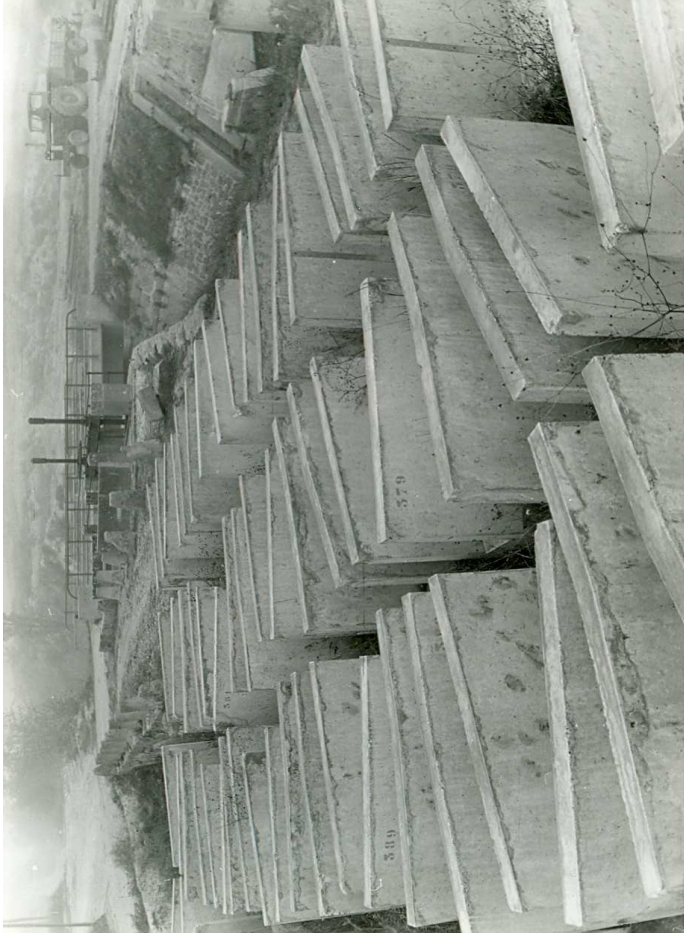




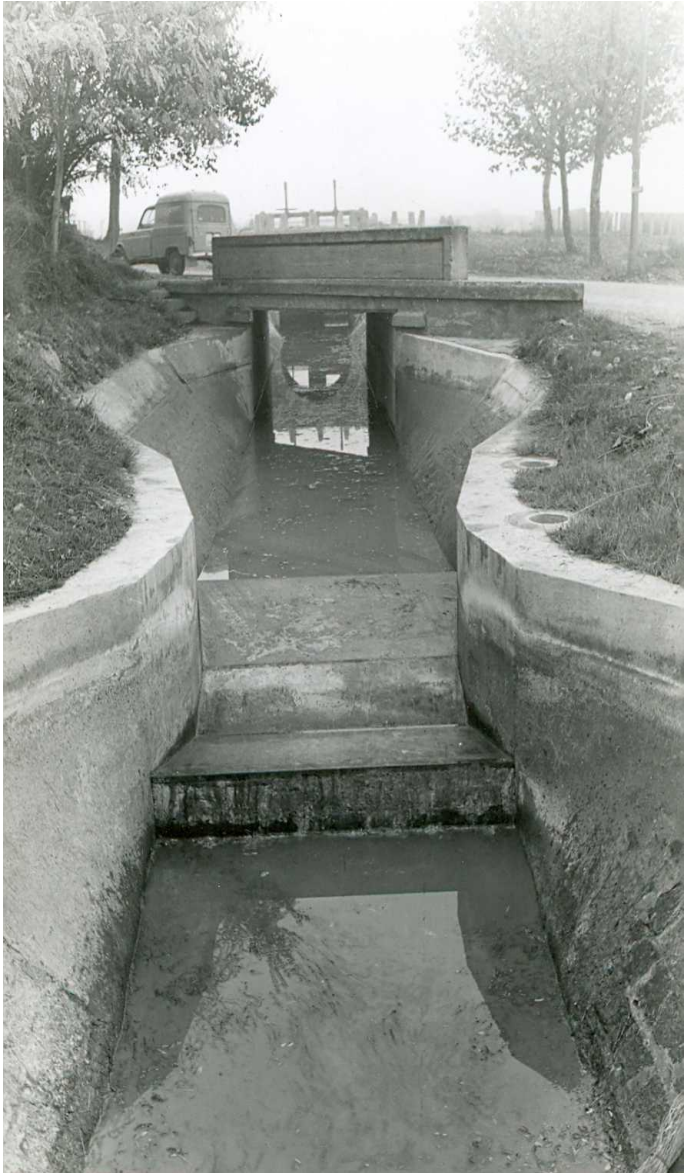




























4.10.51

BR. 843



6.1.52

BR. 666





6. 2. 52

BR. 872



3752

BR. 308



28.7.53

BR. 1092





30.7.52

BR. 928







BR. 1197 AC

16.3.55



11-3-55

BR. 1194, AC











BR. 1268

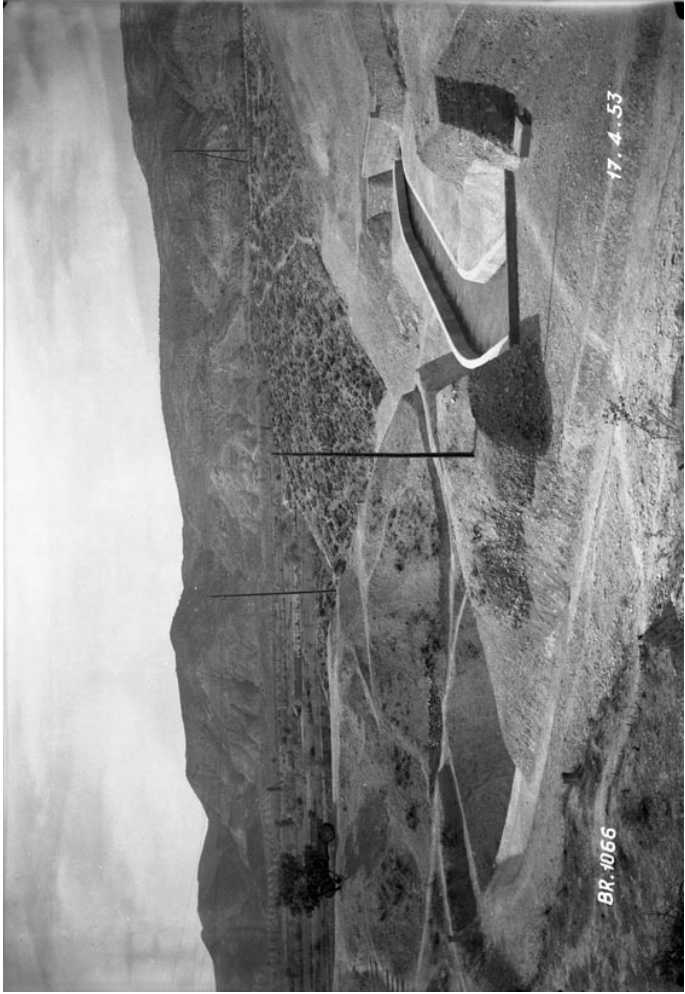
3. I. 58

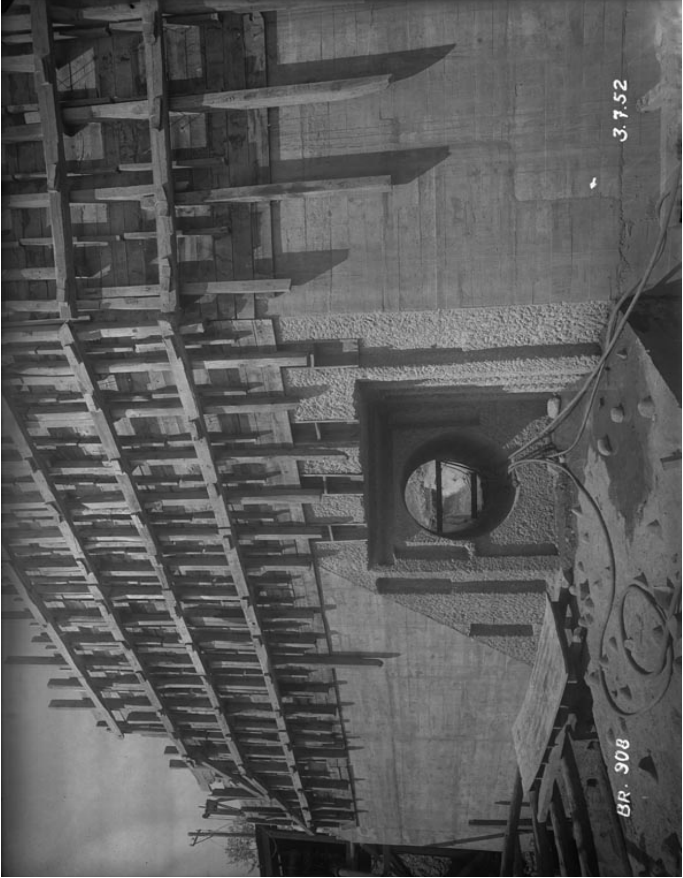


17. 4. 53

BR. 1054





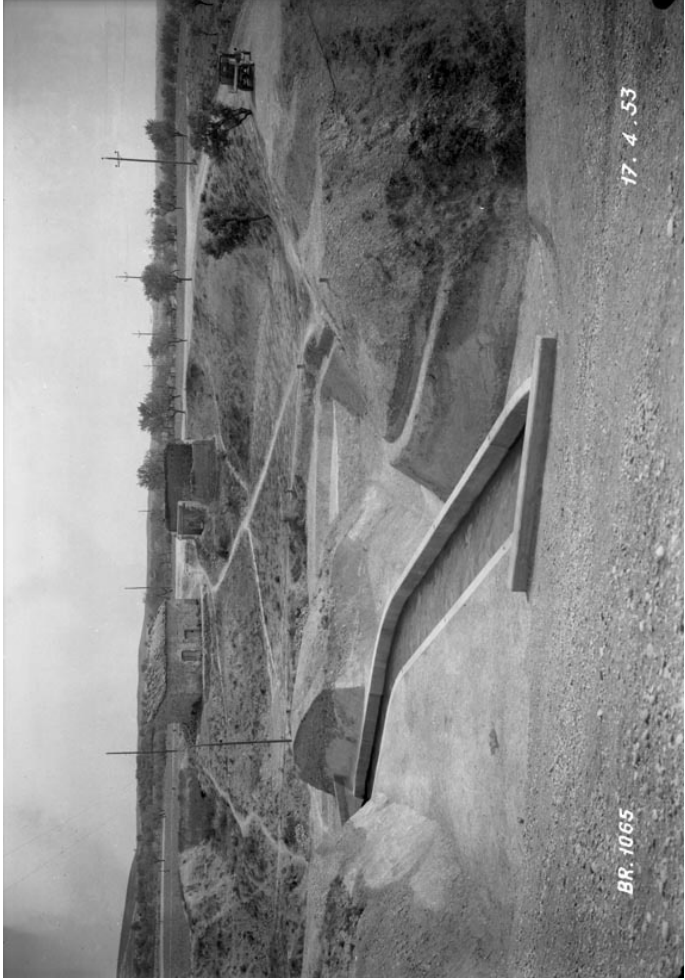




BR. 1280

2. V. 58





17. 4. 53

BR. 1065



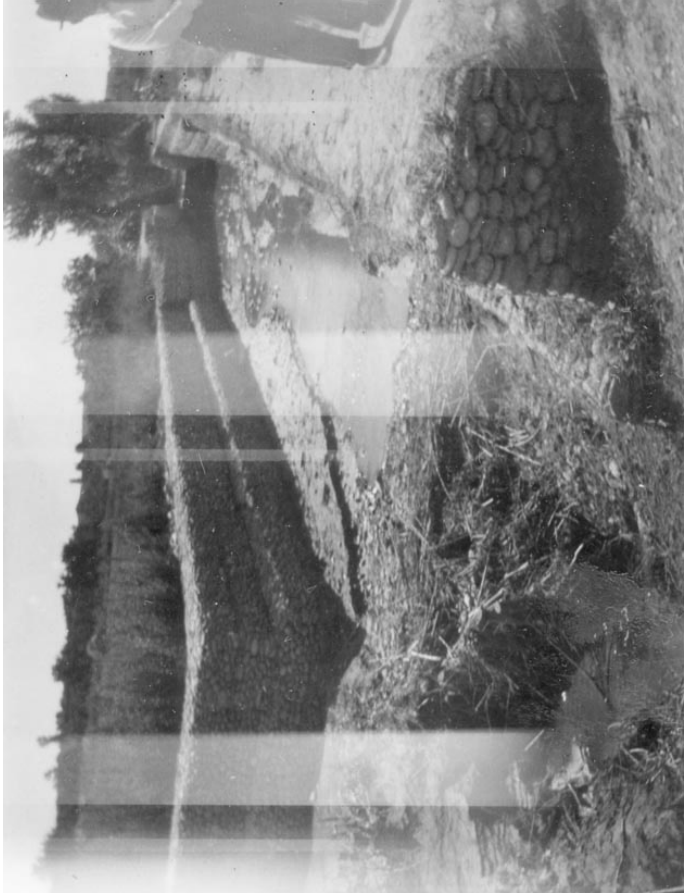




















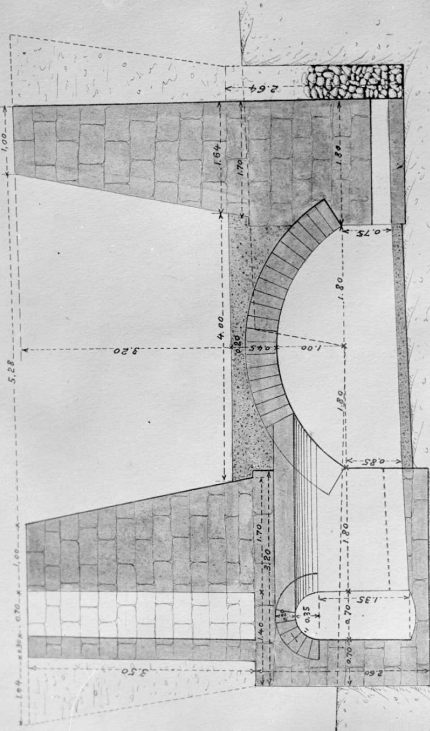


4. 圖. 59

BR. 1342

Acueducto Cenill  
Sección transversal

ESCALA DE 1:50 m





105







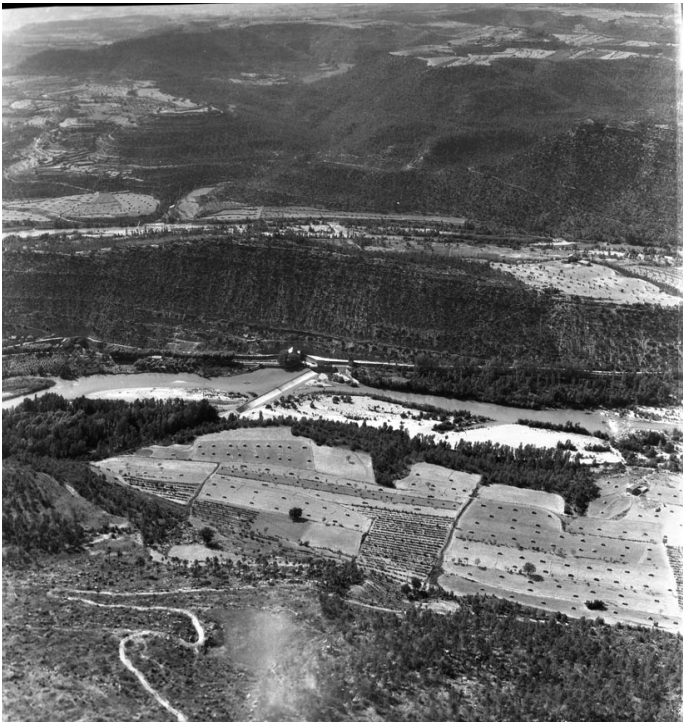
La gesta





































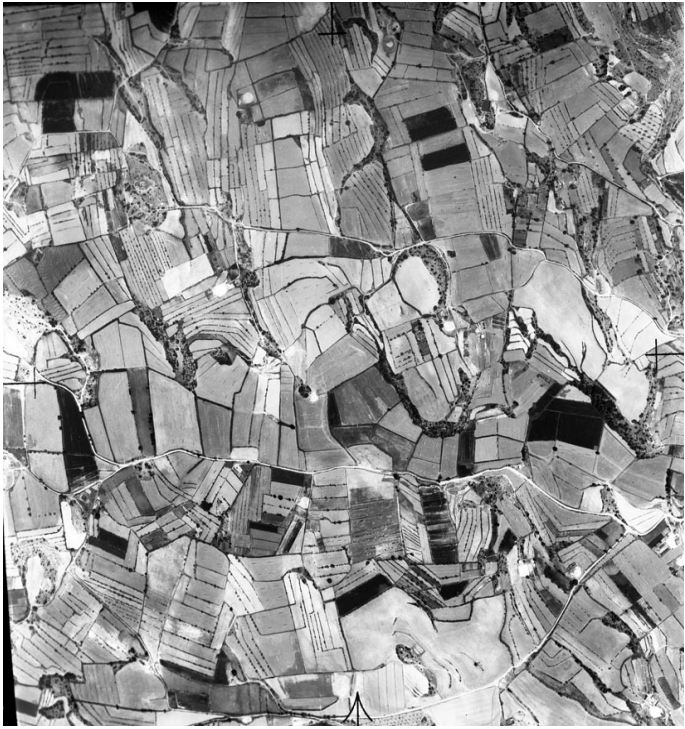












































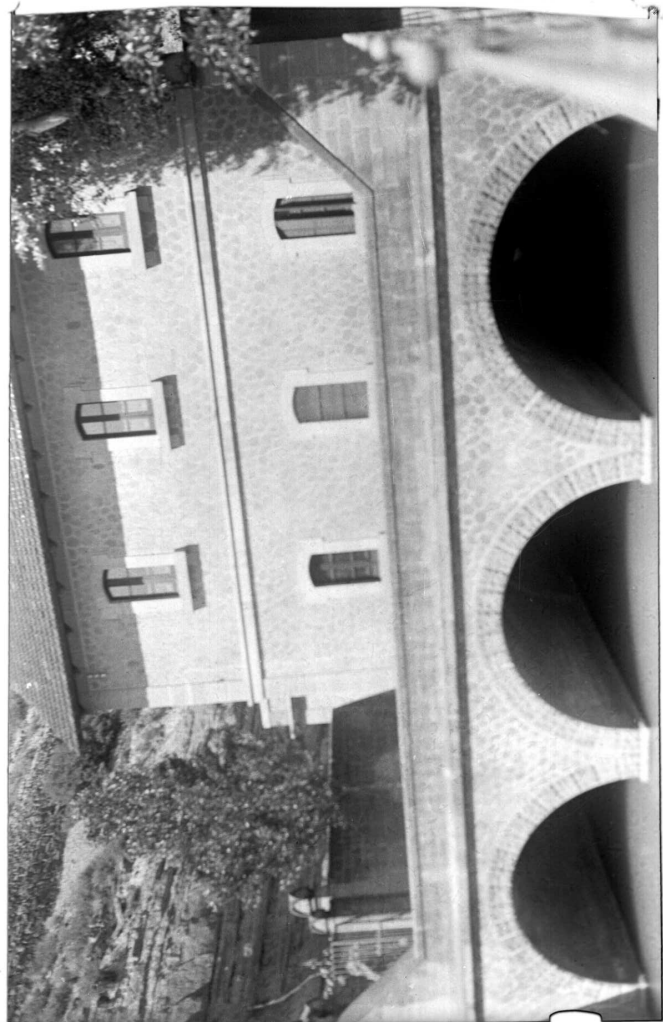






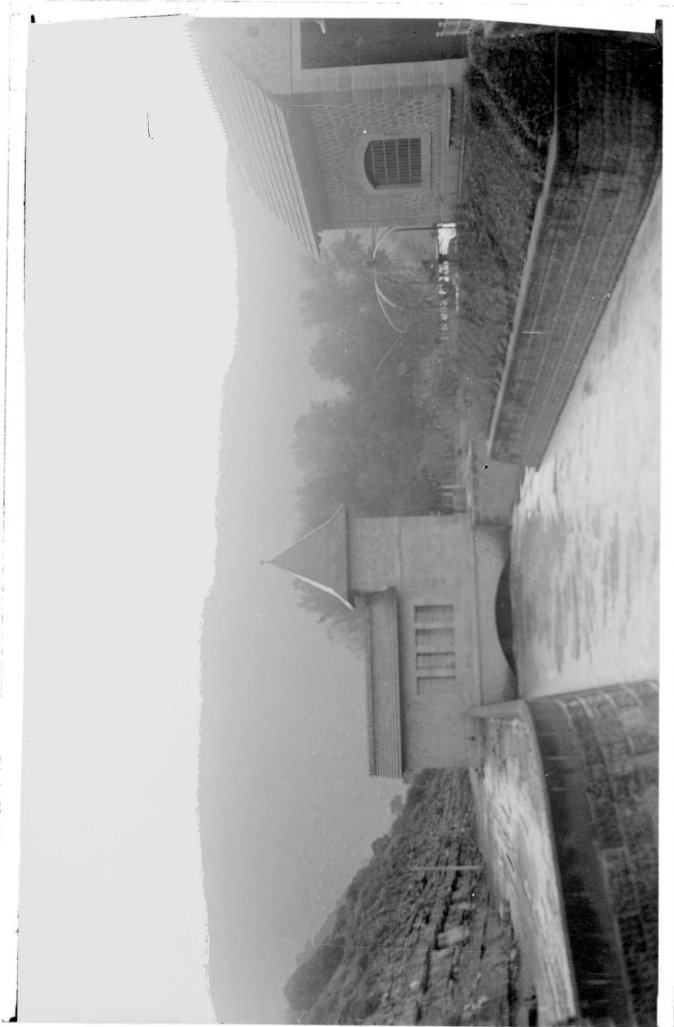


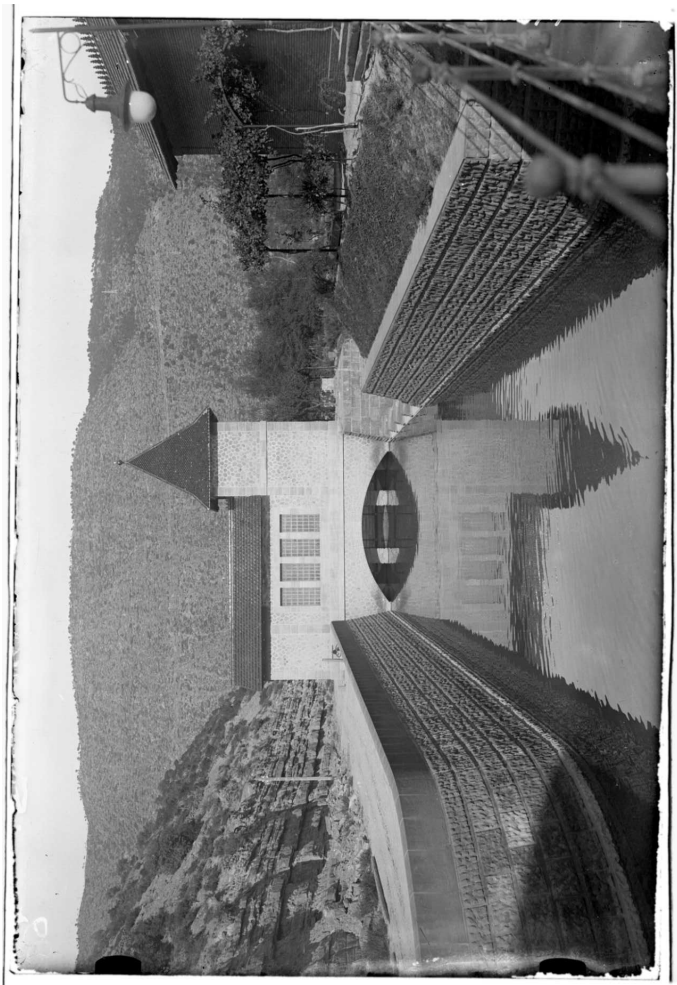




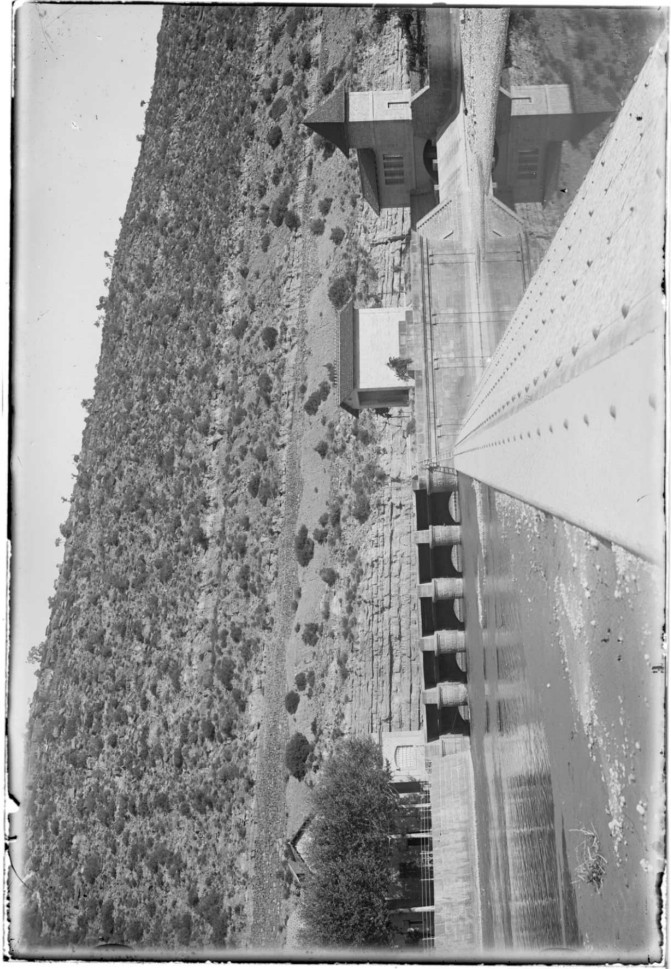


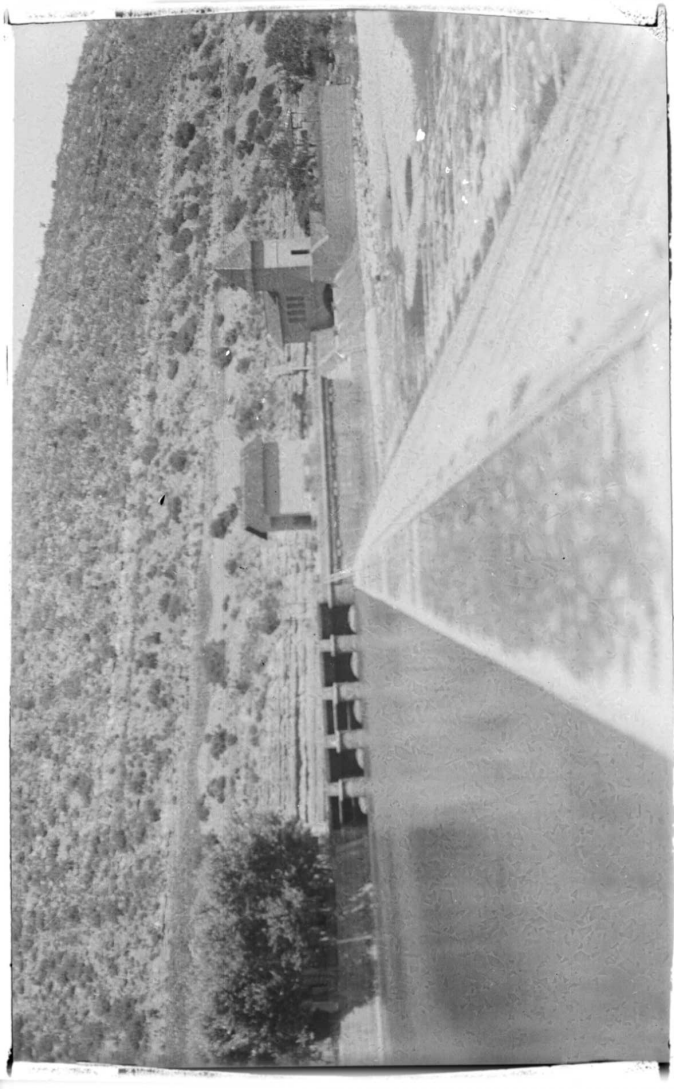














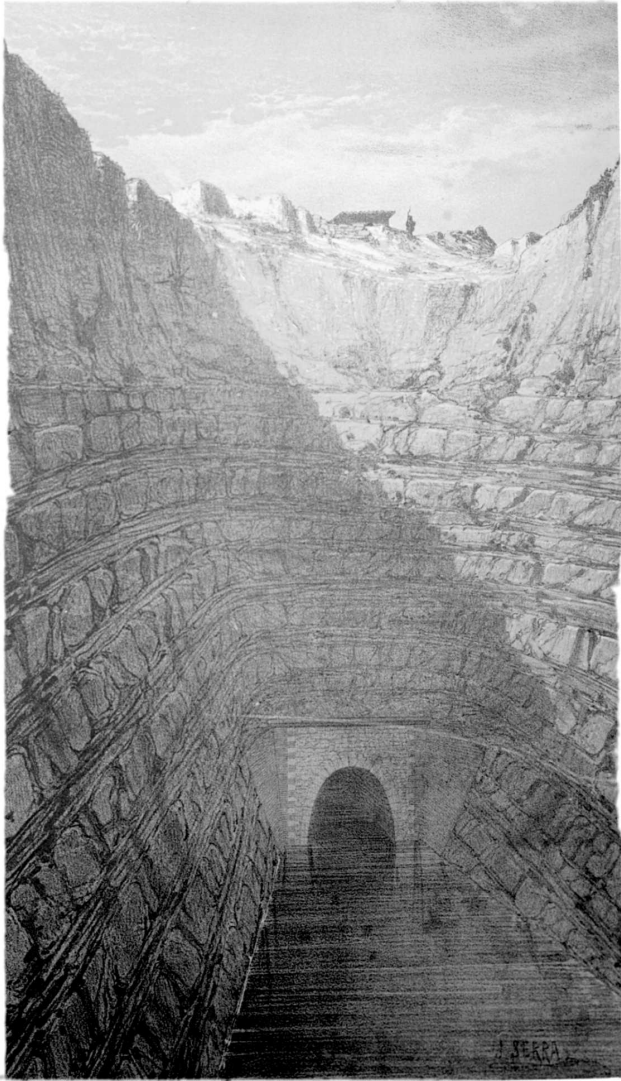


25





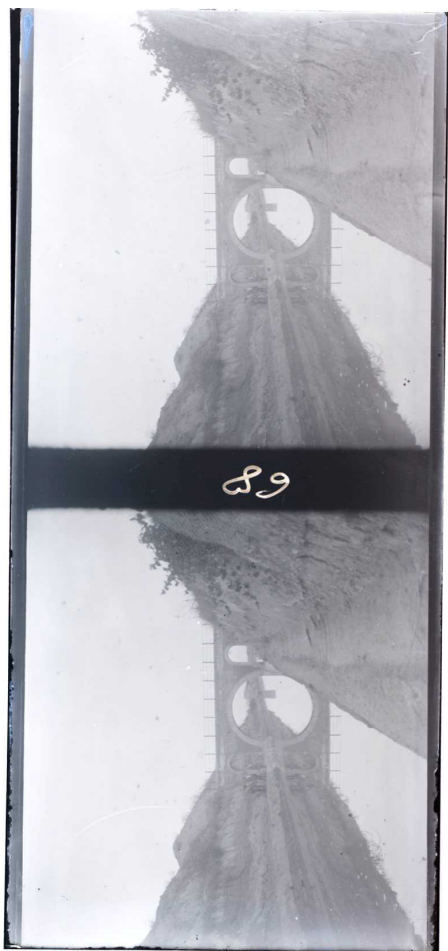










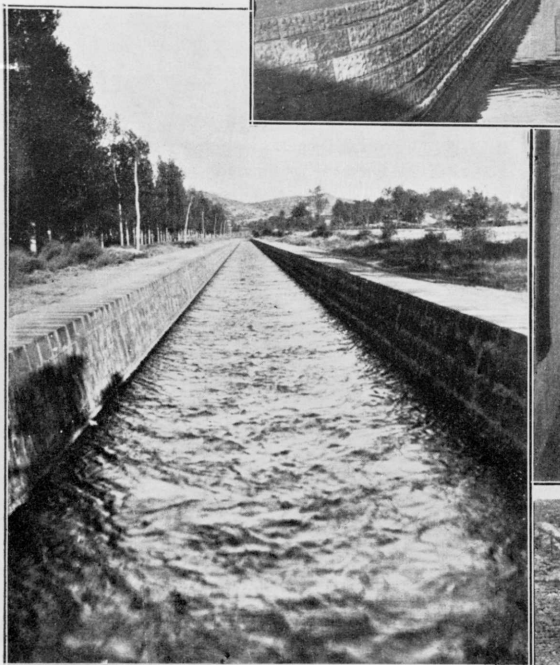
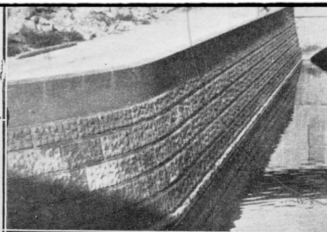




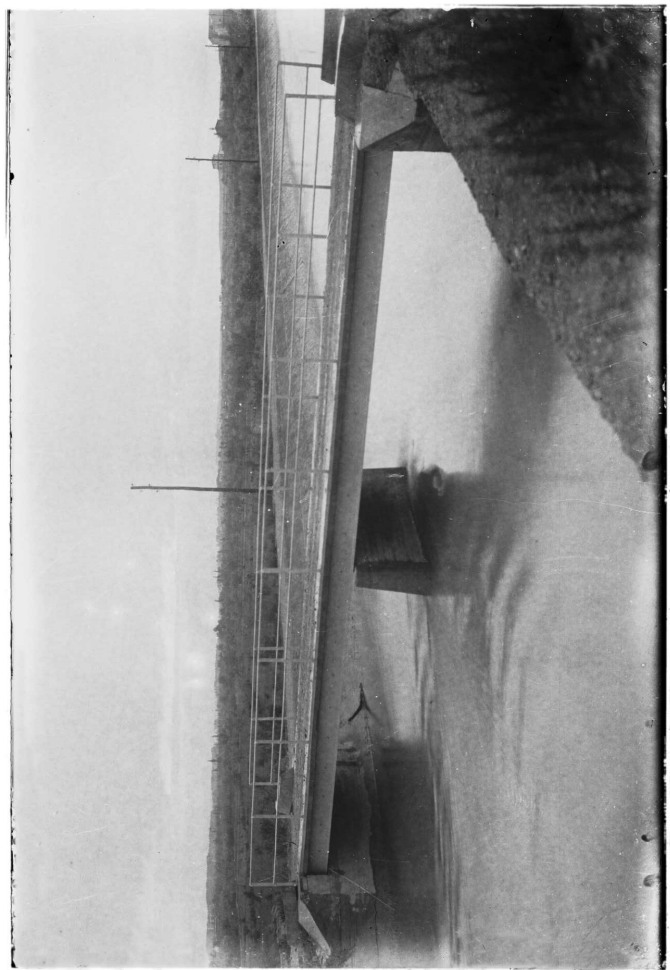




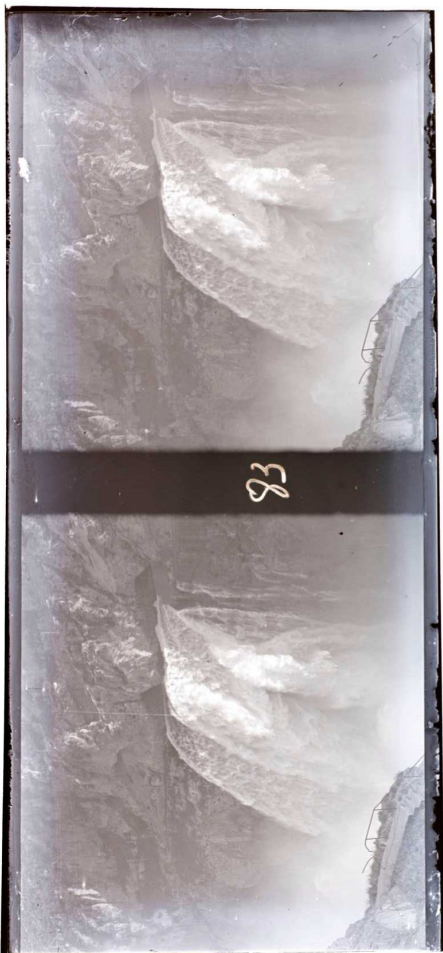
Cauce artificial,  
denominado "CENILL"  
para salvar  
terreno yesoso



















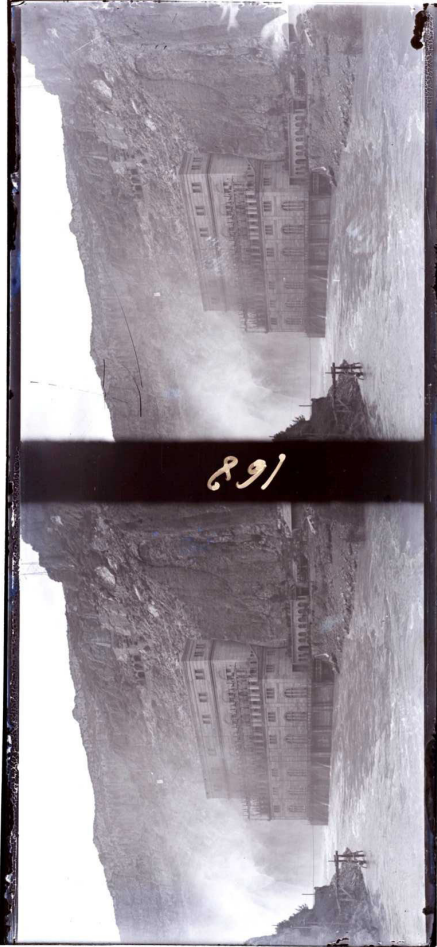






















181







107





200





202





203









207

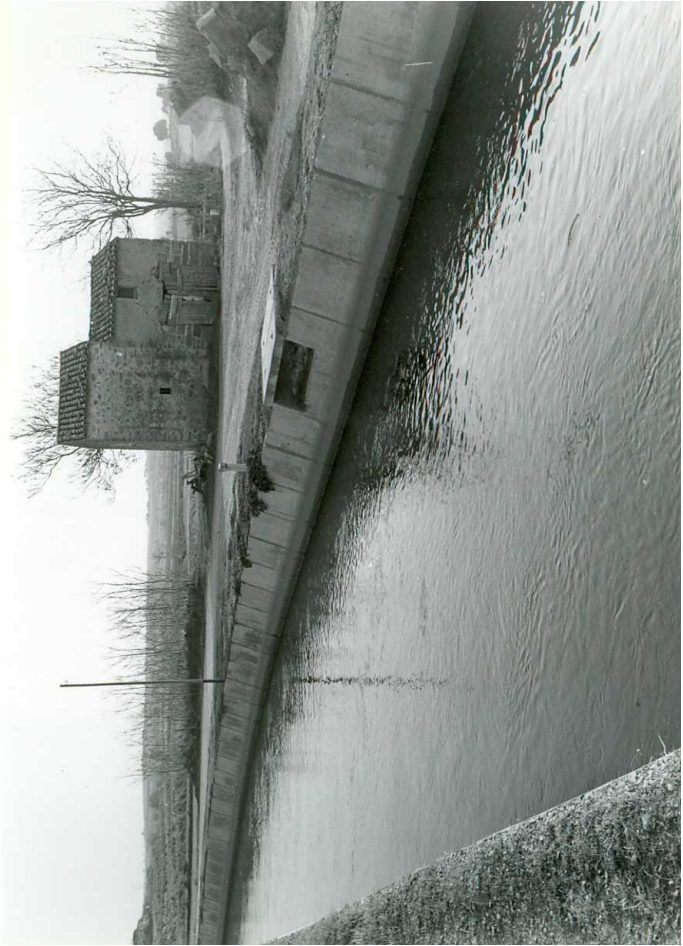




つが



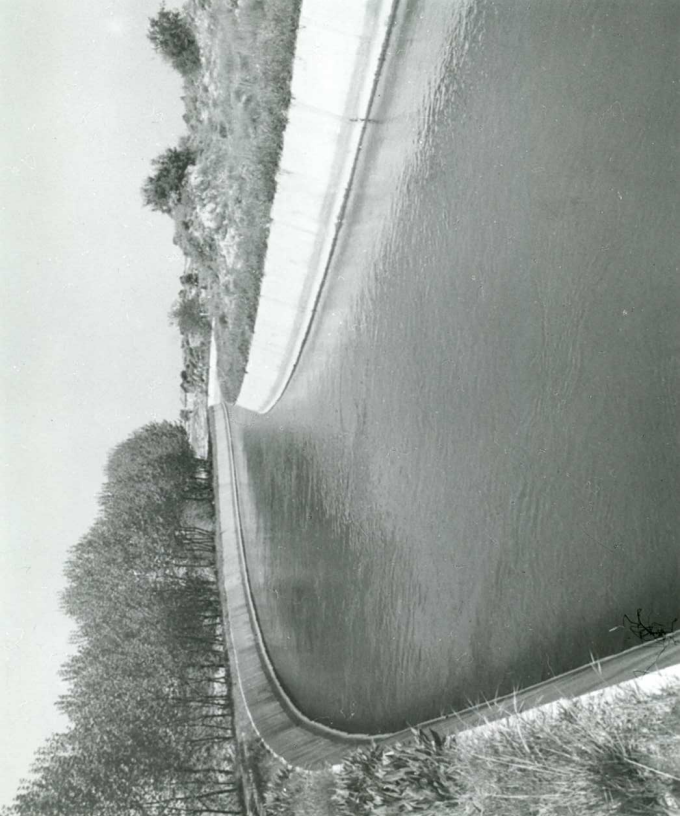




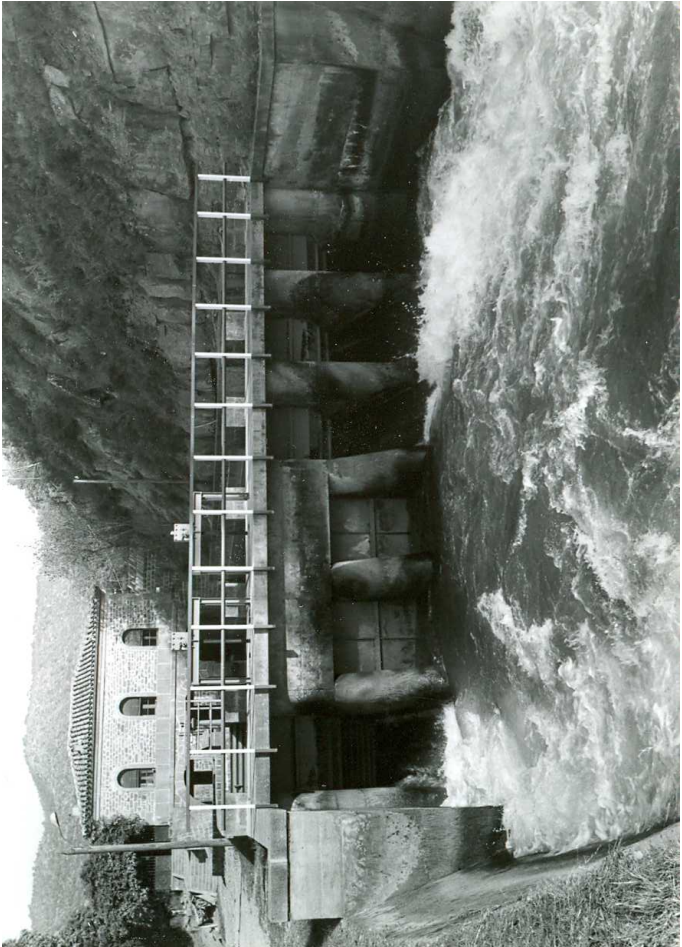














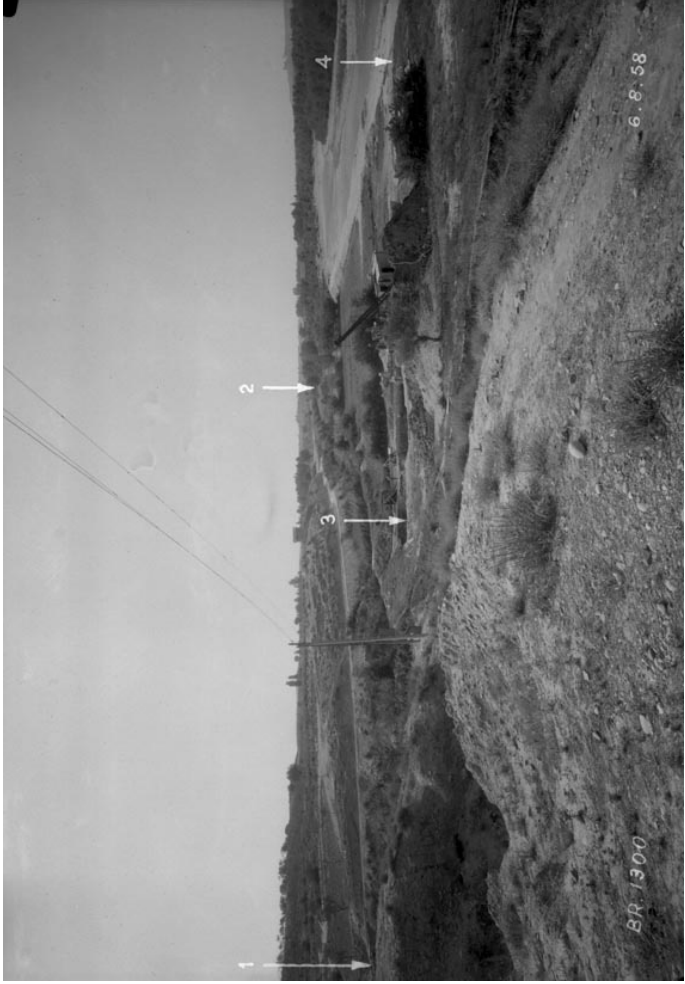






11-III-49

B-5



















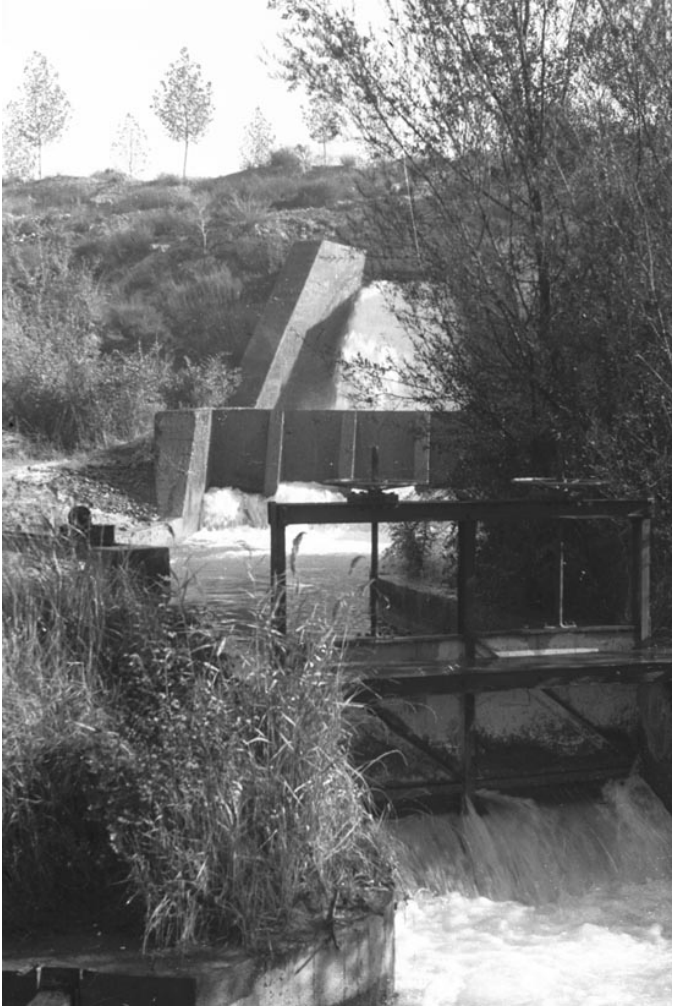


















11197











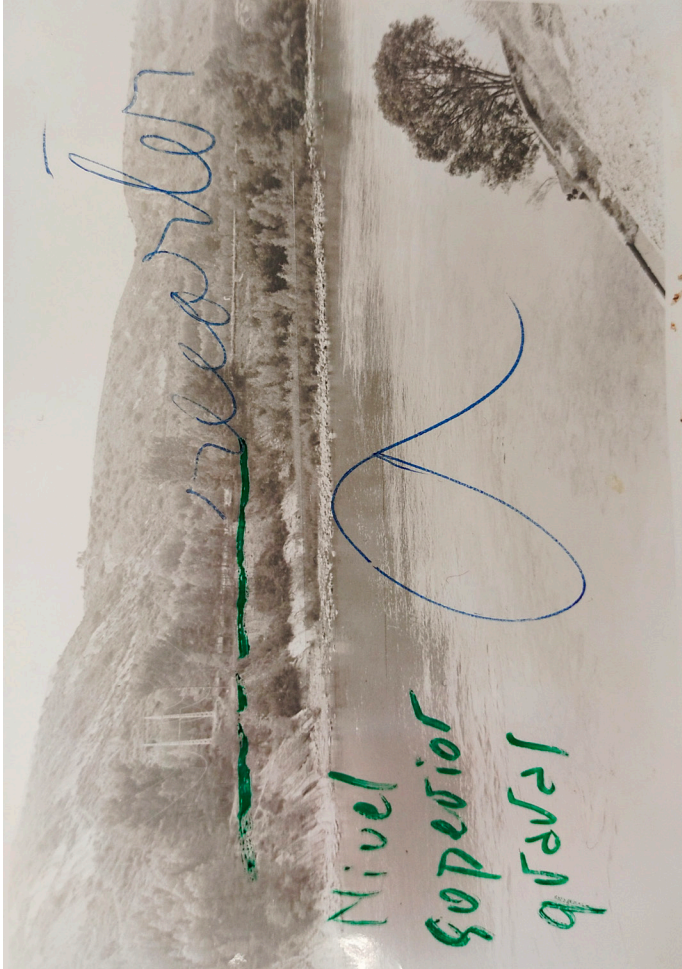






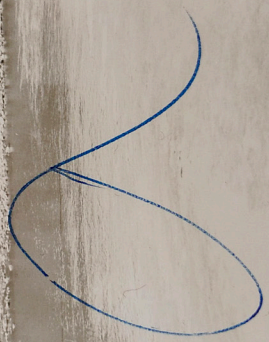
360004030003077 - 0006

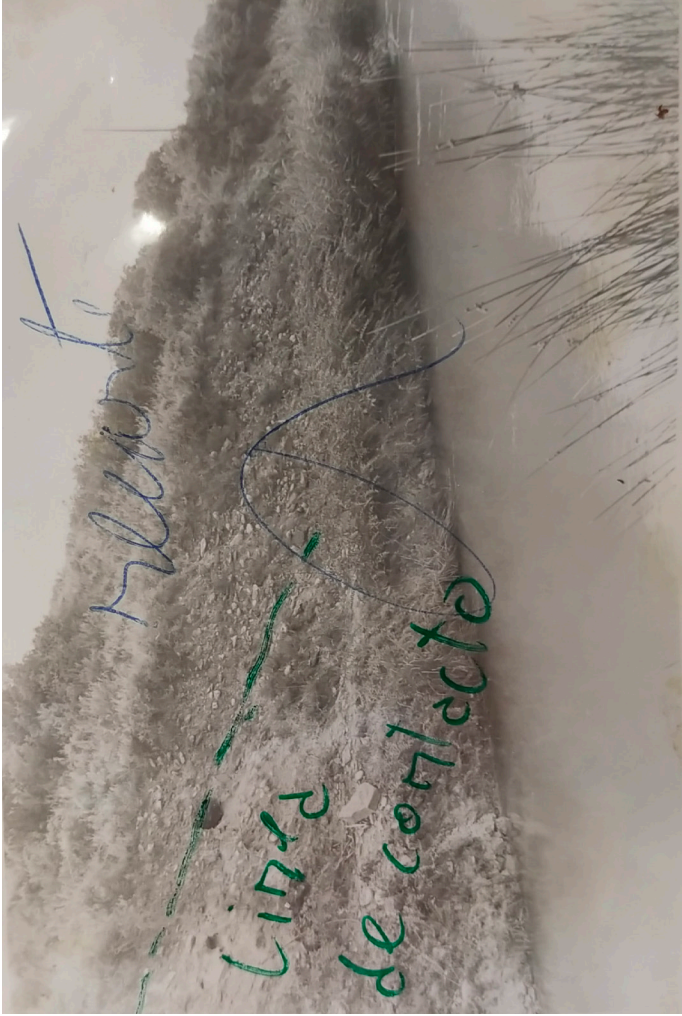




meadows

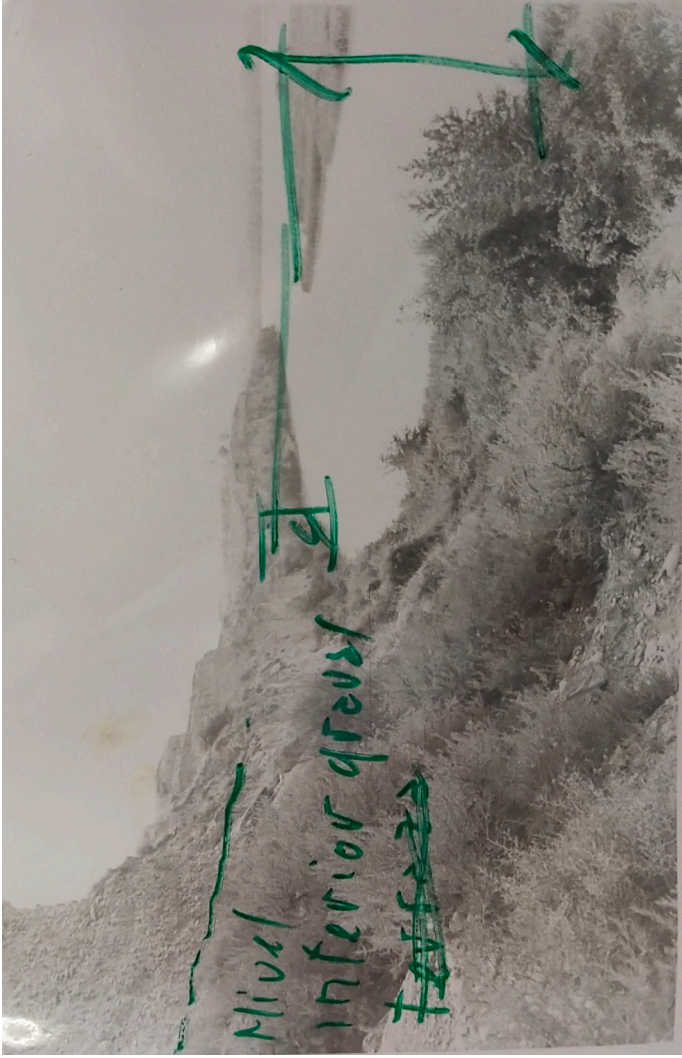
Nivel  
superior  
quasiel







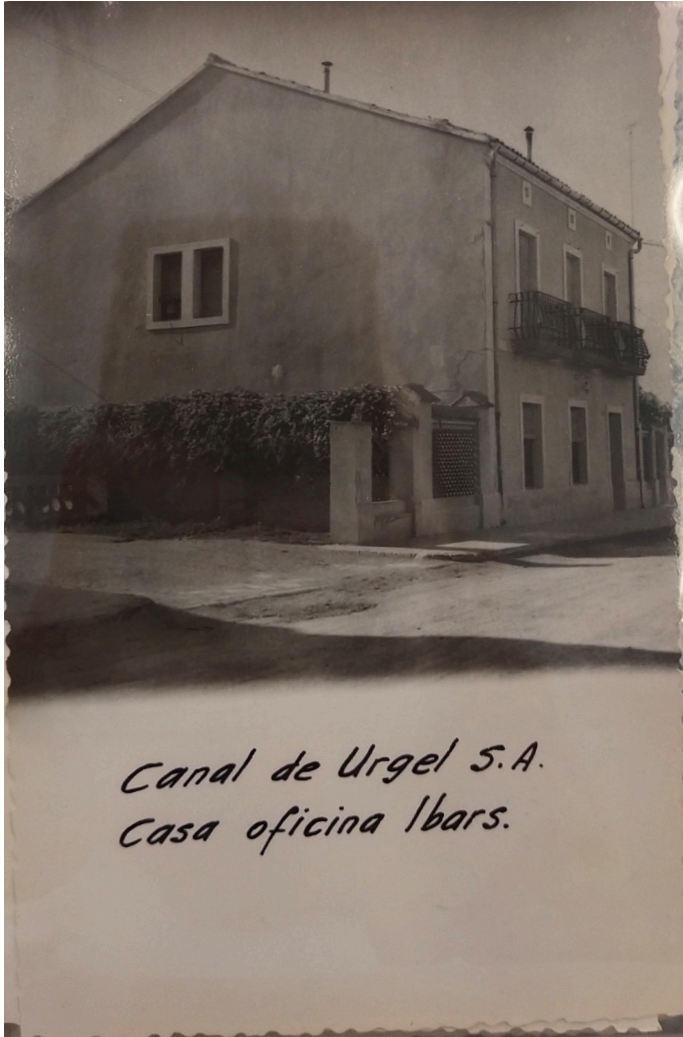




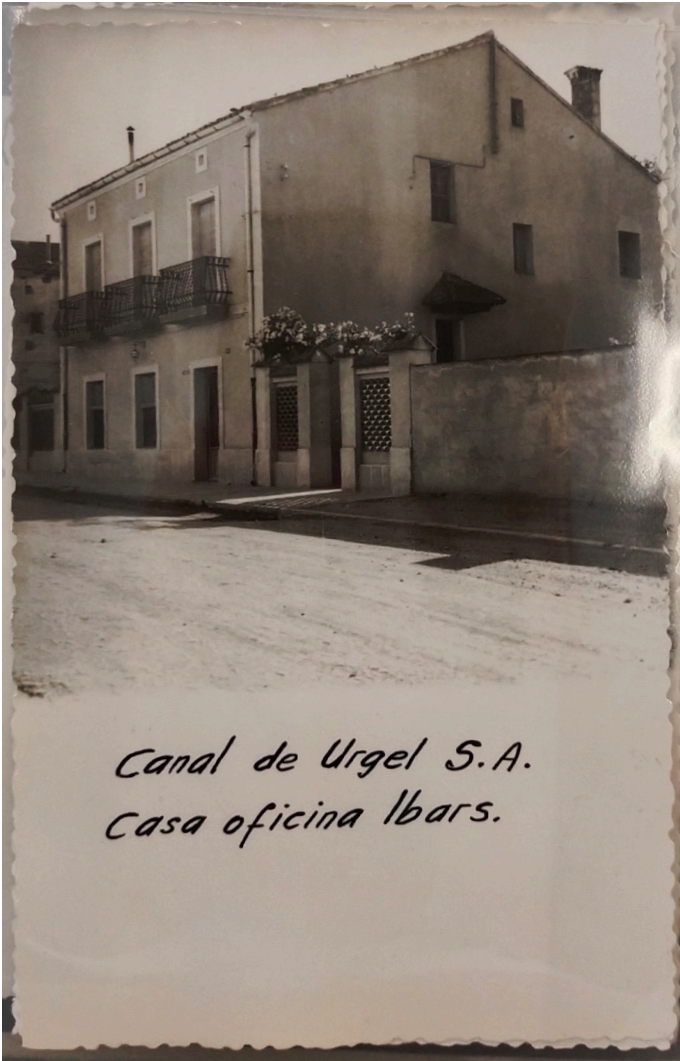
Mival

inferior qteous

~~Teffers~~



*Canal de Urgel S.A.  
Casa oficina Ibars.*



*Canal de Urgel S.A.  
Casa oficina Ibars.*



*Canal de Urgel S.A.  
Chalet en Mollerusa.*



*Canal de Urgel S.A.  
oficina y almacenes  
Mollerusa.*



*Canal de Urgel S.A.  
Acueducto Cervera.*



*Canal de Urgel S.A.  
Toma 2ª Acequia Pral.*



*Canal de Urgel S.A.  
Acueducto Cervera*

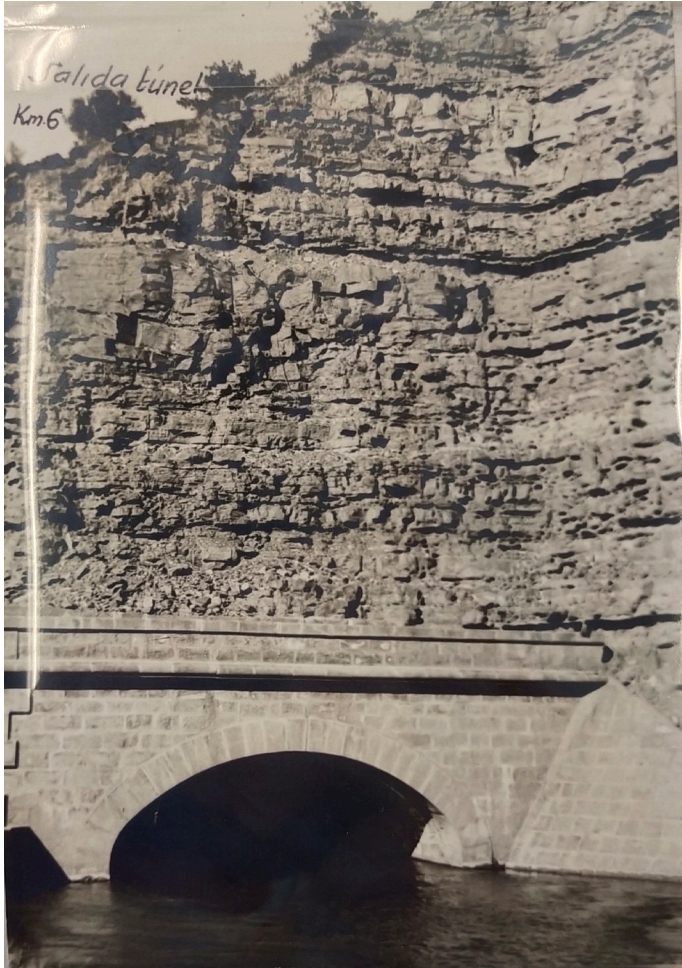




*Canal de Urgel S.A.  
Casa-Oficinas de Agramunt.*



*Canal de Urgel S.A.  
Casilla de Guarda*









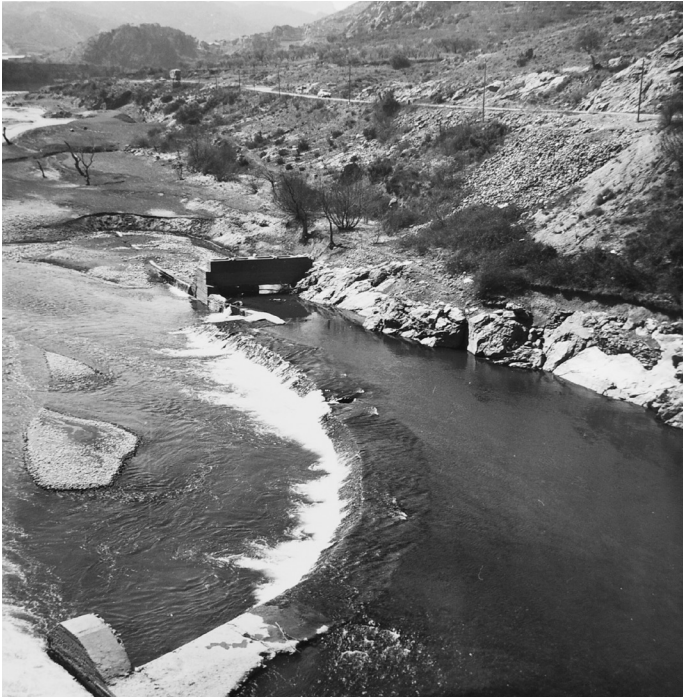






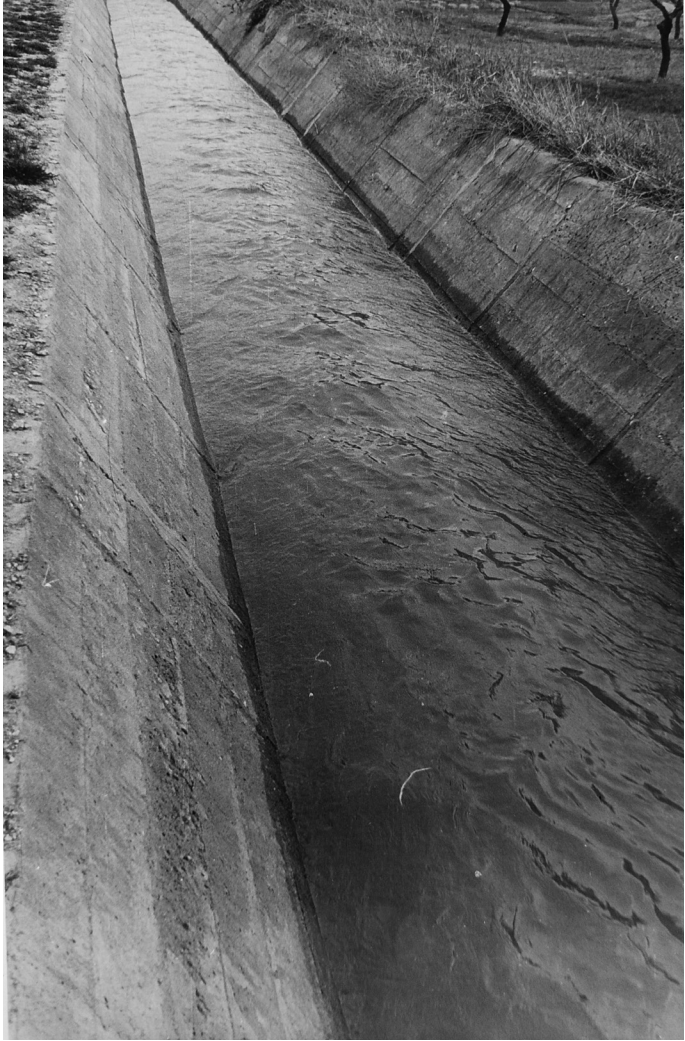












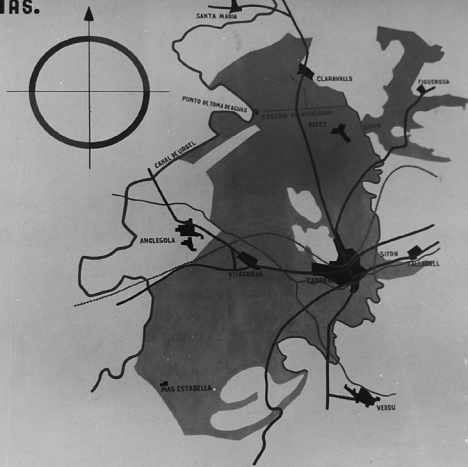


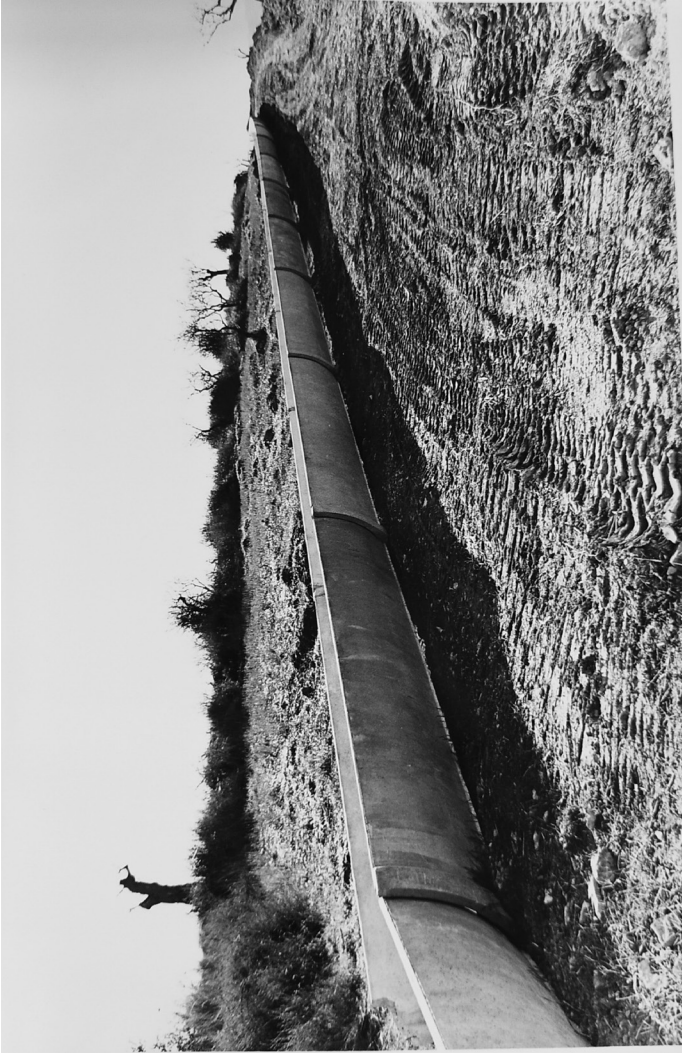




ONE DE COLOMBIA

**ZONA DE RIEGOS**  
**4526 Hrs.**







































*Horitzons de gradesa* és un projecte desenvolupat durant la Residència de creació a l'Arxiu Comarcal de l'Urgell 2024.

Cinc relats que atenen les formes d'organització, del Canal d'Urgell i els elements porosos que configuren la seua imatge i registre dilatat.

Imatges trobades a l'Arxiu Comarcal de l'Urgell i Arxiu Comarcal Pla de l'Urgell.

Miguel Alejos.  
Tàrrega, 2024.







