

C H E R I C H A N

510.934.6903 | cheri@cherichan.com | www.cherichan.com

P O R T F O L I O



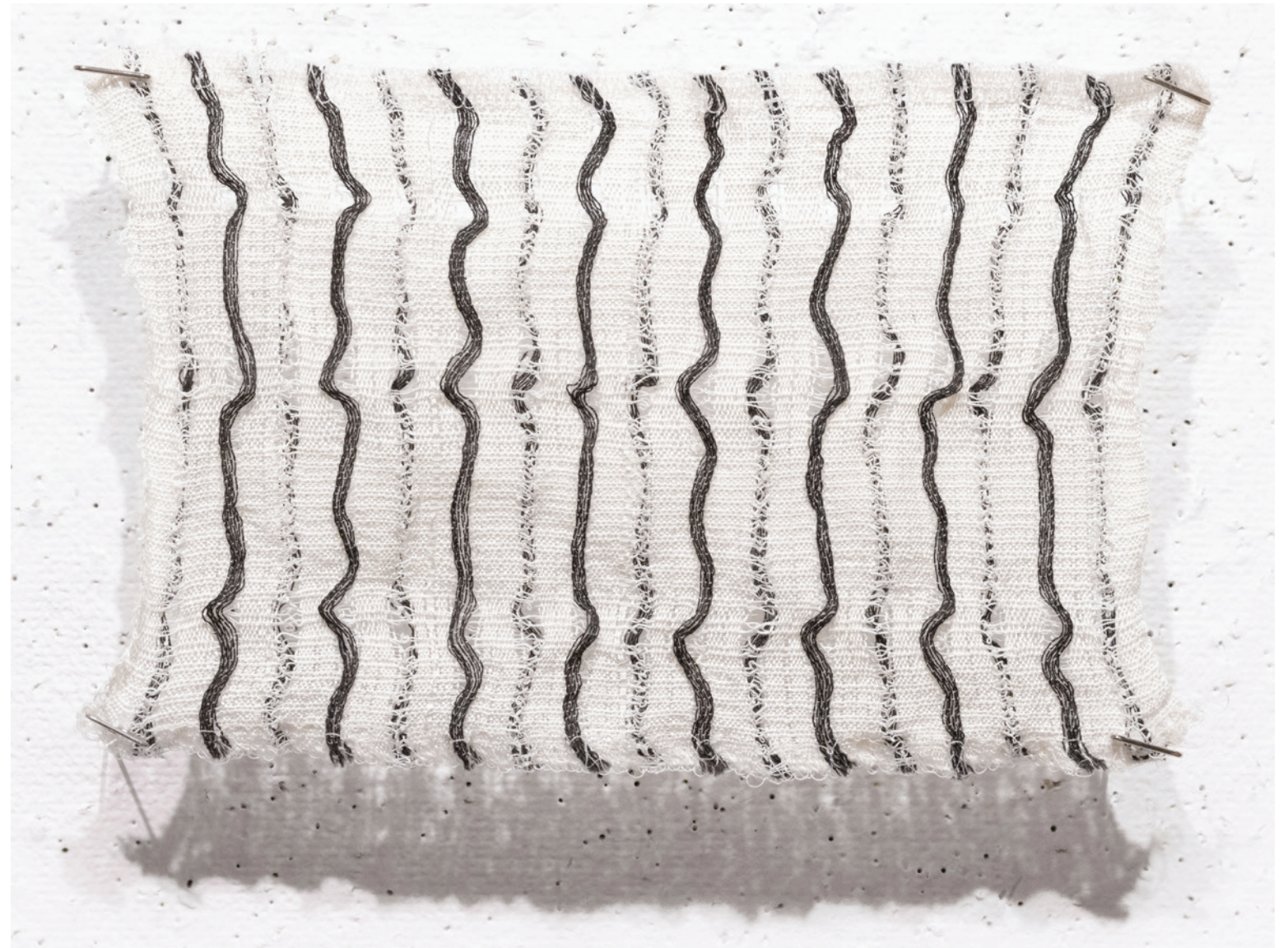
bamboo, linen, and walnut

2024

Studies focus on the inherent qualities of natural fibers and the nuanced interaction between unbalanced yarn and structures.

linen, wool, and stainless steel

2024





linen, wool, and stainless steel

2024



Studies focus on the inherent qualities of natural fibers and the nuanced interaction between unbalanced yarn and structures.

high-twist silk and wool

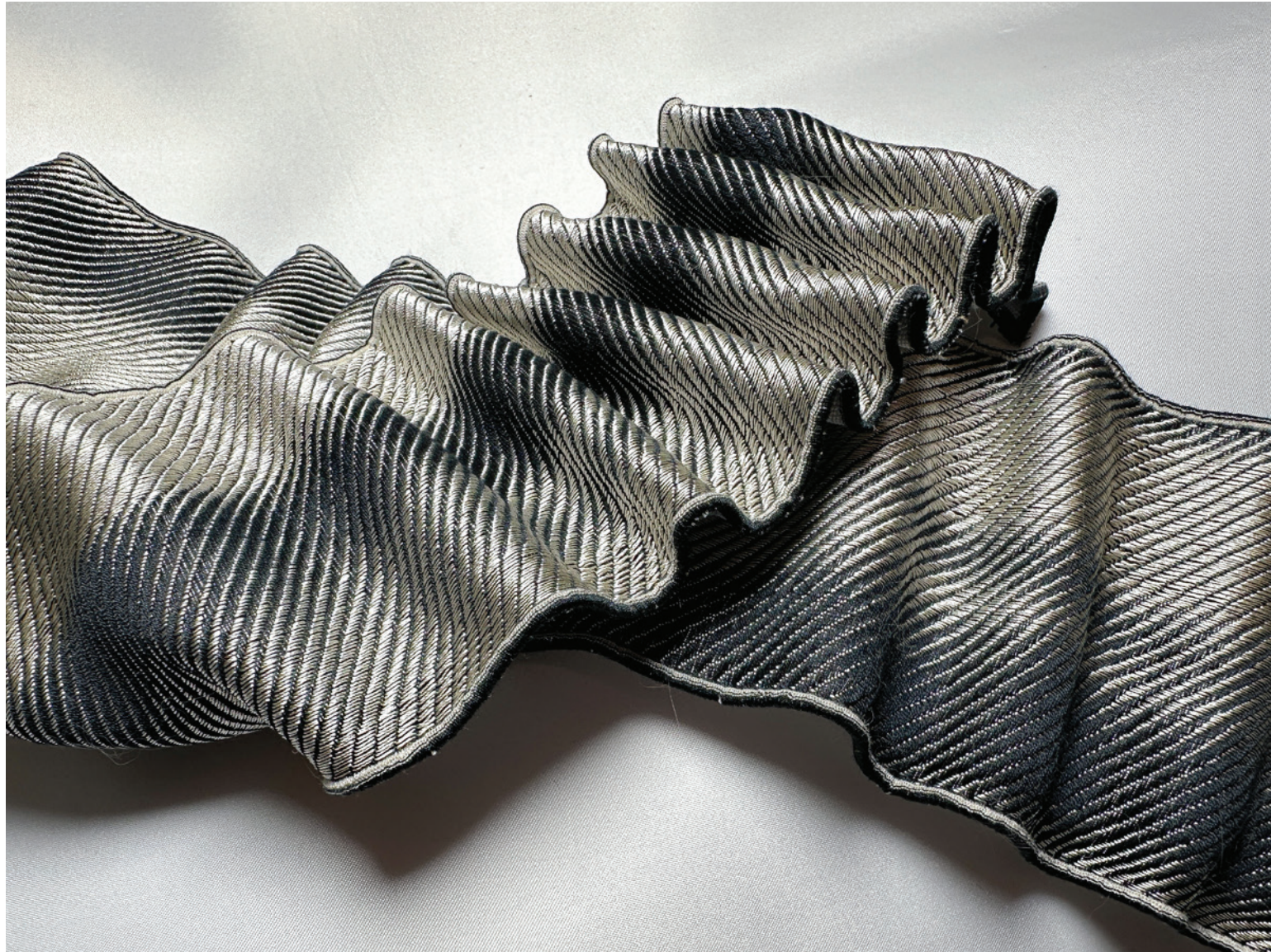
2024



Studies focus on the inherent qualities of natural fibers and the nuanced interaction between unbalanced yarn and structures.

LEFT: silk and linen (alternating S and Z twist)
RIGHT: silk, wool, and polyester

2024



Jacquard-woven sample (experimentation with pleats).

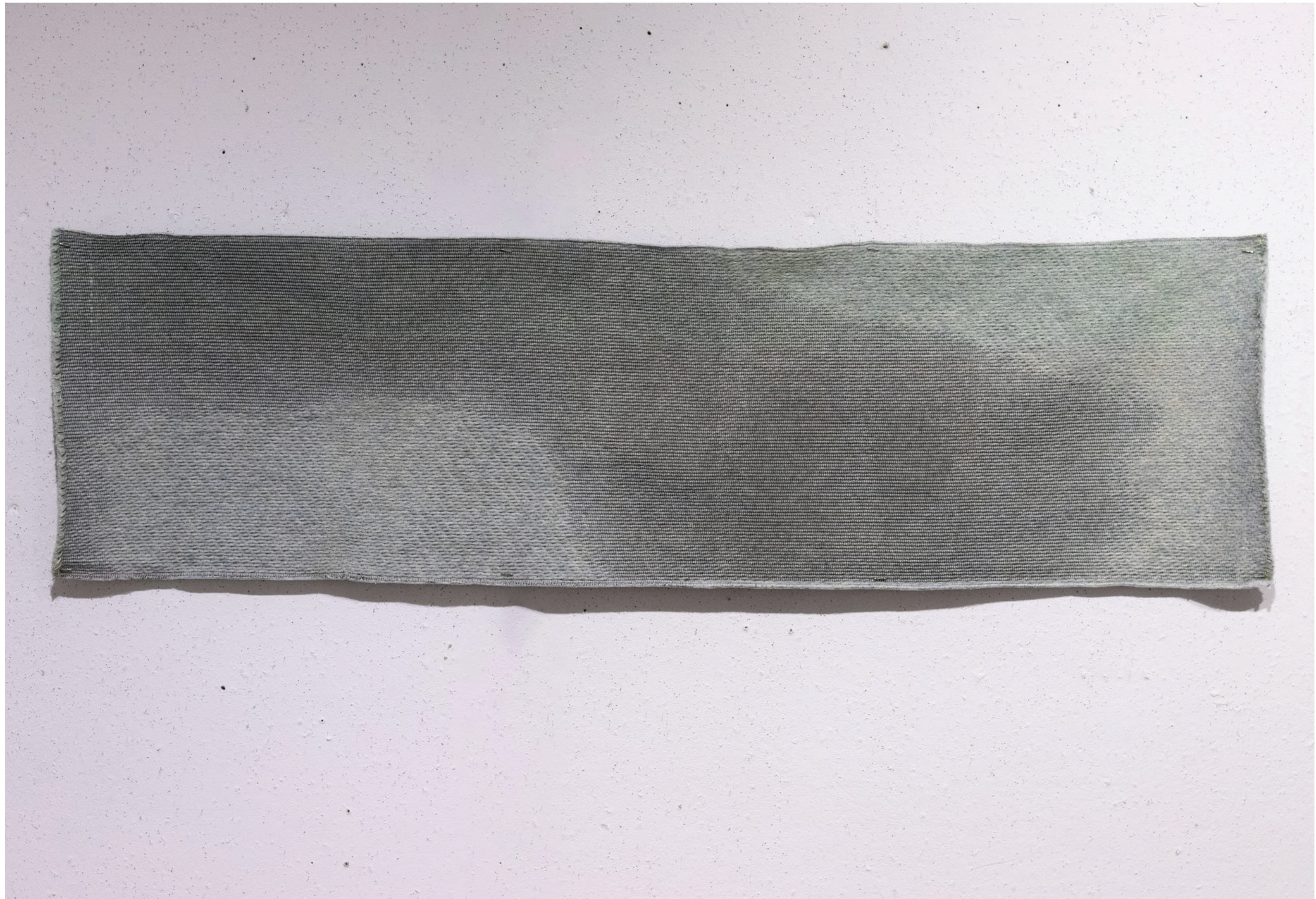
2023



Jacquard-woven fabrics

2023

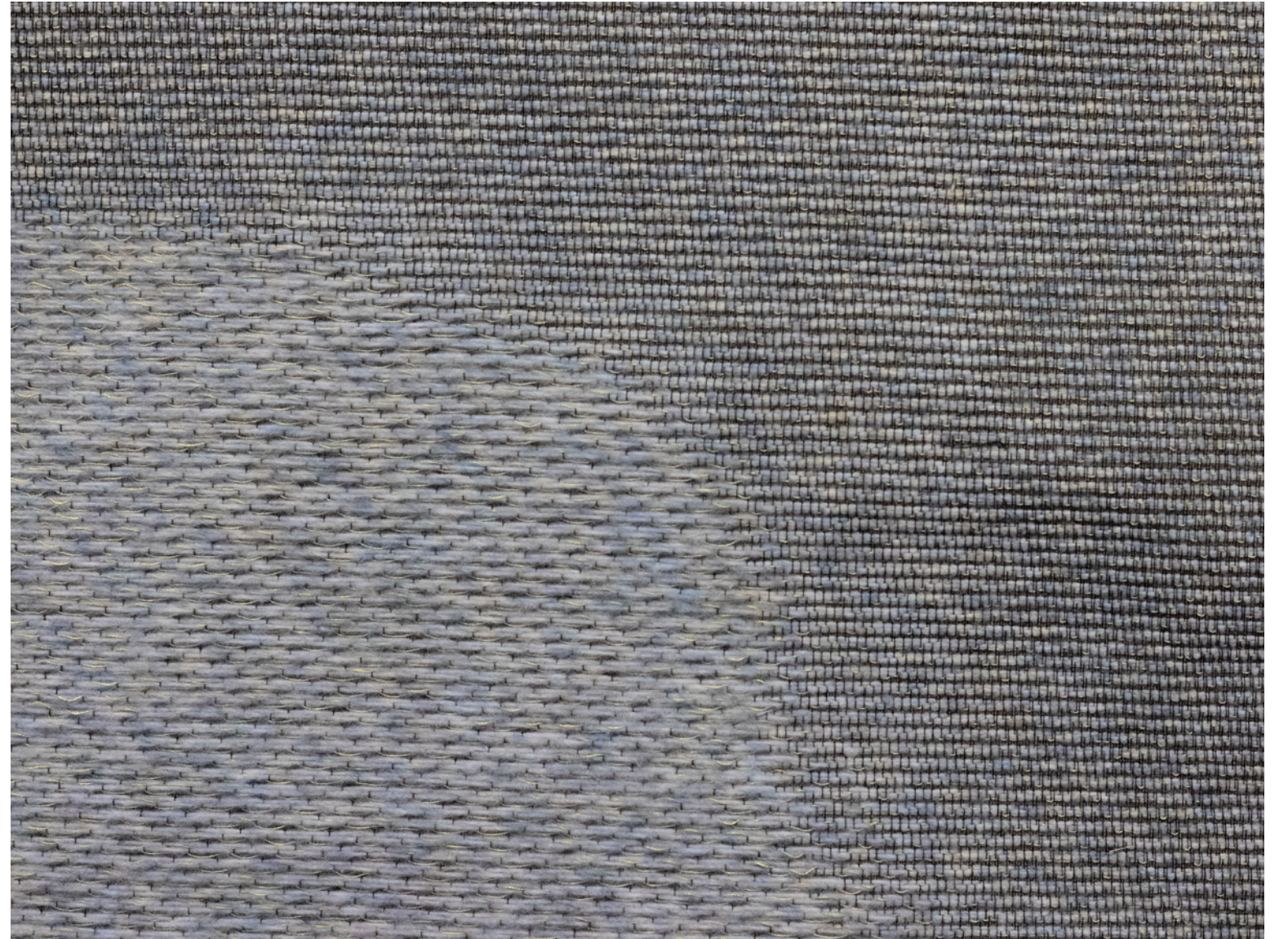




Experimentation on textural changes by varying structures using an industrial Jacquard loom.

wool, cotton, and rayon

2024





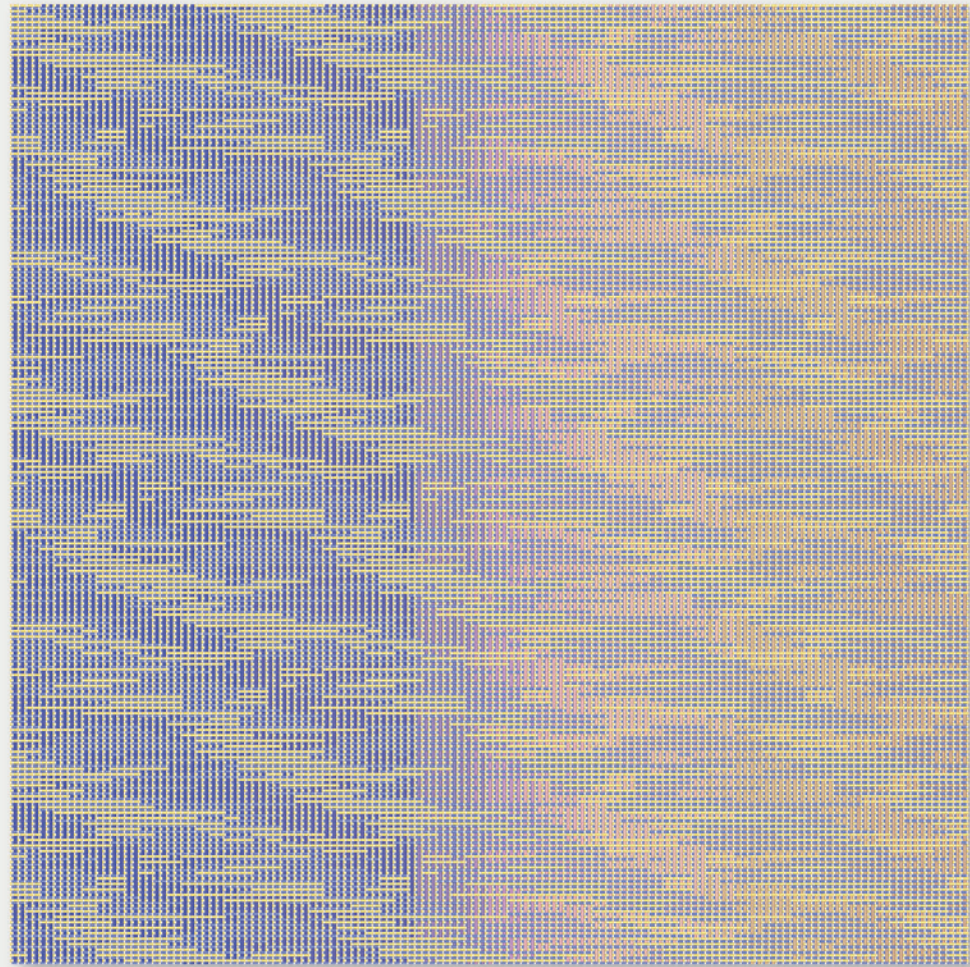
Dobby-woven samples on repeat. Experimentation on material shrinkage, inlay, and transparency.

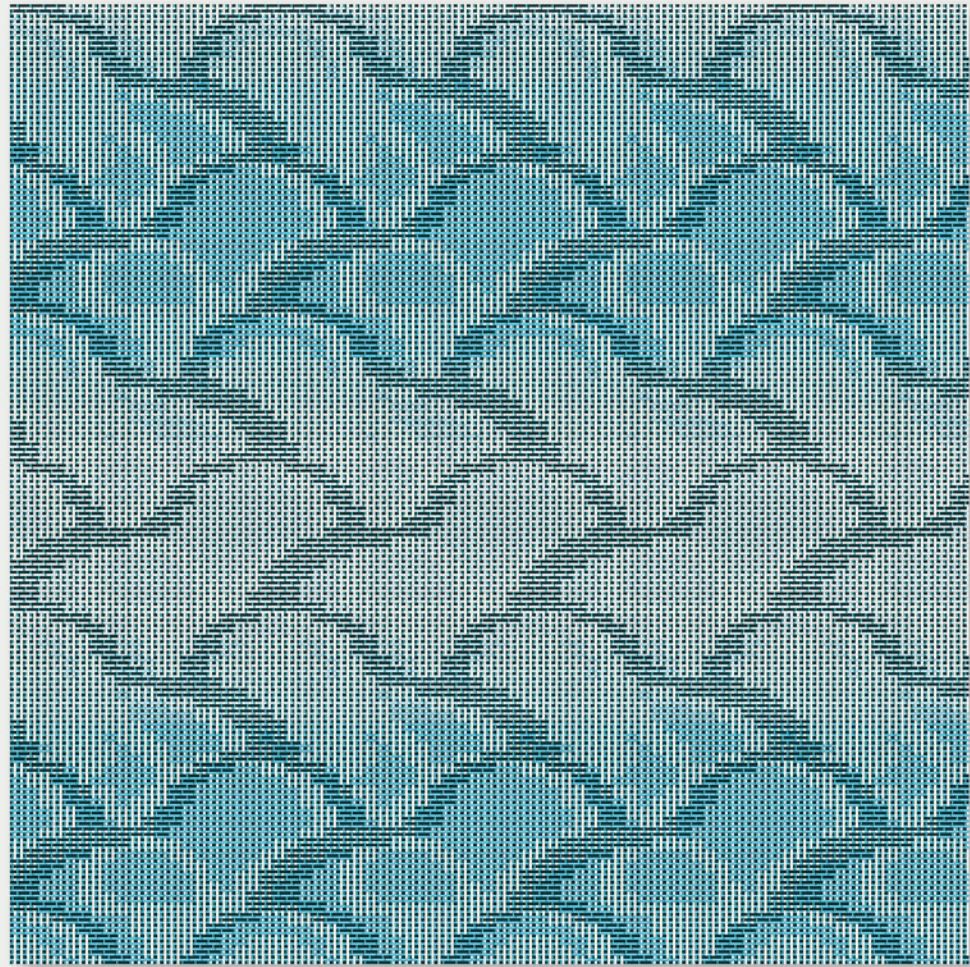
wool, monofilament, and rayon

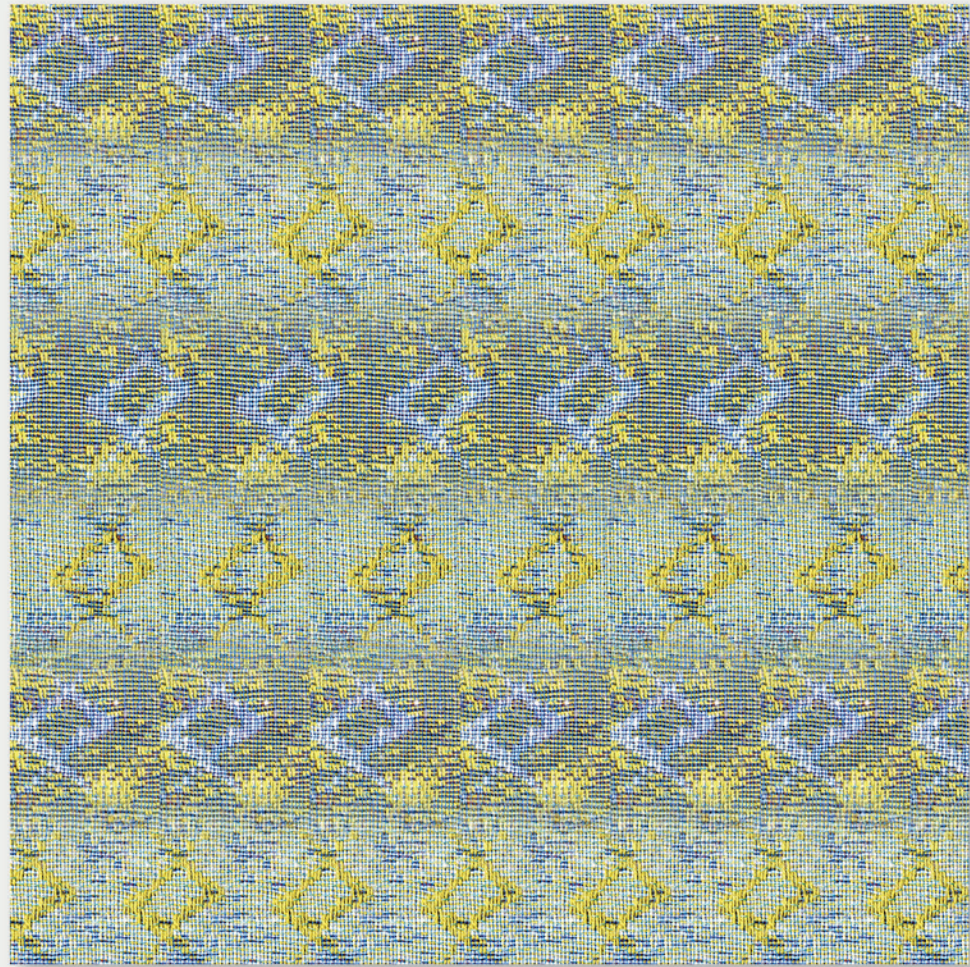
2023

DOBBY COLLECTION

Hospitals often feel solemn, evoking sadness. I aim to bring happiness and vitality to counterbalance this, drawing inspiration from nature's beauty like the expansive ocean and sprawling grasslands. My designs integrate overlapping and ombre patterns to capture nature's captivating essence, aiming to inspire and motivate patients.

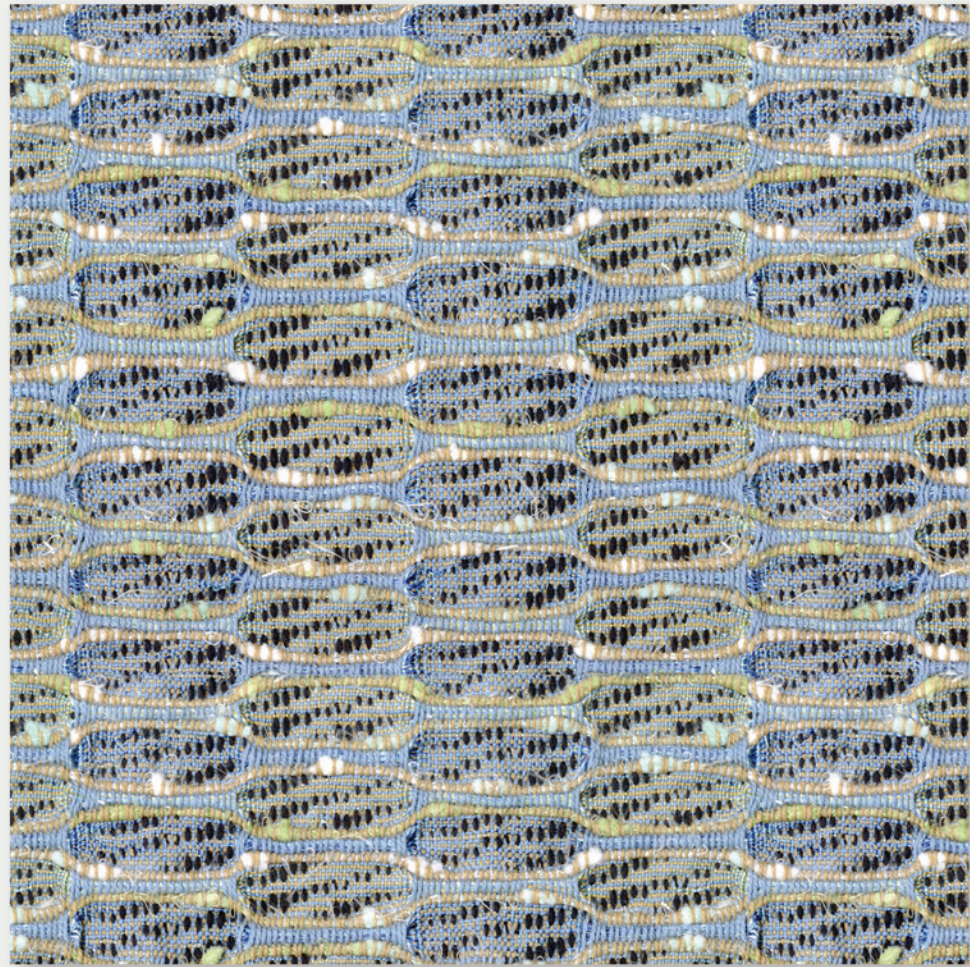














LEFT: cotton, wool, rayon
RIGHT: cotton, wool, rayon, and polyester

2023





LEFT: digital embroidery with hand-beading
RIGHT: digital embroidery



Combination of knitting, weaving, and projection of comments collected about Hong Kong from citizens and foreigners.