

FOR IMMEDIATE RELEASE

Contact: Andrew Laumann

SPCE Gallery

Website: www.spce.gallery

Email: spcegallery@gmail.com

Phone: 443-286-2093

**SPCE Gallery Presents “Hag in a Black Leather Jacket” – A Weary
Exploration of Exploitation, Subculture, & Mythology**

Opening Reception: April 5, 5-8 PM

Exhibition Dates: April 5 – May 3, 2025

Gallery Hours: Saturdays & Sundays, 11 AM – 3 PM, and by appointment

(Glen Arm, MD) – SPCE Gallery, , located at **5200 Glen Arm Rd, Suite D, Glen Arm, MD** is thrilled to present *Hag in a Black Leather Jacket*, a dynamic group exhibition featuring works by **Tony Shore, Theresa Tomi Faison, Nick Wisniewski, Karen Warhsal, and Corey Durbin**. The exhibition opens April 5 with a reception from 5-8 PM and runs through May 3.

Borrowing its title from **John Waters' first film (1964)**—a no-budget, black-and-white short about an interracial wedding officiated by a man in a football helmet—*Hag in a Black Leather Jacket* embraces the film's spirit of irreverence, DIY aesthetics, and outsider identity. The film, which Waters has kept deliberately unscreened, has become more myth than cinema, its lore growing stronger through its inaccessibility. This purposeful withholding transforms *Hag in a Black Leather Jacket* into an artifact of legend, proving that the power of a work can be just as potent—if not more—through its absence. The exhibition draws on this mythology, presenting a collection of artists whose work revels in themes of subversion, folklore, and the tension between visibility and obscurity.

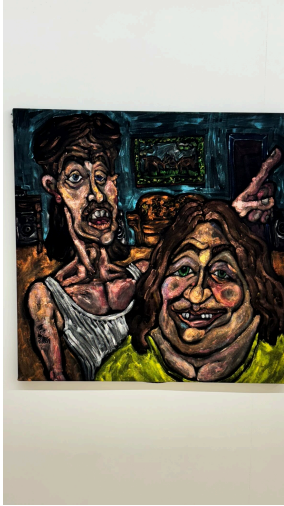
Tony Shore's cinematic black velvet paintings capture the raw intensity of working-class life, while Theresa Tomi Faison's multi platform video works examine memory and personal identity. Nick Wisniewski's sculpted drywall carvings reveal the eerie beauty of overlooked spaces, and Karen Warhsal's oil paintings are reminiscent of a classic & timeless style with modern themes. Corey Durbin's punk-inspired installations, made from repurposed objects and text-based elements, disrupt conventional display methods, creating an experience that is both chaotic and deliberate. Together, these artists craft a visually and conceptually rich dialogue between local geological past and present, mysticism and subculture.

For media inquiries, images, or to schedule an appointment, please contact Andrew Laumann at spcegallery@gmail.com or 443-286-2093.

Follow SPCE Gallery on Instagram [@spcegallery](https://www.instagram.com/spcegallery) for updates.

Visit www.spce.gallery for more information.

Hag In A Black Leather Jacket - Available Works



Tony Shore

The Couch, 1993

Oil on Velvet

34"x36"

\$6000



Tony Shore

Adam & Eve, 1994

Oil on Velvet

84"x79"

\$30,000



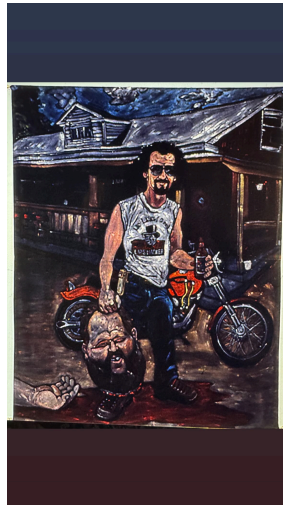
Tony Shore

Baby, 1993

Oil on Velvet

34"x36"

\$6000



Tony Shore

David & Goliath, 1994

Oil on Velvet

63"x81"

\$30,000



Nicholas Wiesneiwski

Kirk, 2024
Carved Drywall in
Artist Frame
40.25"x39.25"x2.5"
\$6000



Nicholas Wiesneiwski

Kirk, 2024
Carved Drywall in
Artist Frame
22.5"x24.5"x2"
\$6000



Nicholas Wiesneiwski

Kirk, 2024
Carved Drywall in
Artist Frame
20.5"x29.75"x2.5"
\$6000



Nicholas Wiesneiwski

Kirk, 2024
Carved Drywall in
Artist Frame
33"x40"x3.5"
\$6000



Theresa Tomi
Faison

**MöbiusMonologu,
2024**

Total Run Time:
3m40s
Materials: 42" LCD
Monitor, power
supply, text taken
from an LLM trained
by the artist,
performance by
Katherine Francis
Murphy
\$2000



Theresa Tomi
Faison

**(un)ImaginedDeluge,
2024**

Total Run Time: 0m8s
Materials: 3x 32" 1500r
curved monitors, power
supplies, mounting
hardware, 1" steel pipe,
pipe joints, video playback
device, AI generated
video loop created
through re-processing
hollywood disaster movie
clips
\$3500



Theresa Tomi
Faison

**ObjectOffline,
2024**

Total Run Time: 3m0s
Materials: 4x 24" monitors,
power supplies, mounting
hardware, zip ties, 1" steel
pipe, pipe joints, video
playback device, Adobe
"media offline" image, "dogs
chasing tails" clips from the
artist's appropriated youtube
archive, "snakes eating
themselves" clips from the
artist's appropriated youtube
archive
\$3000



Corey Durbin

**Scratcher (0225)
,2024**

Oil on Canvas
24"x36"x1"
\$3000



Corey Durbin

**Serve the Servants,
2022**

Police baton, leash,
jewelry chain,
expanding foam,
mirror finish.
34x16x6 inches
\$2500



Corey Durbin

A Metronome, 2024

Chain, steel, rigid
foam, acrylic paint,
tactical belt, child's
toy badge, dollar
store keychain,
flashlight, glove,
battery powered
motor
46.5 x 21 x 14 in.
\$9000



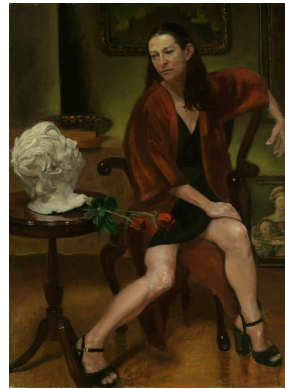
Karen Warshal
The Letter, 2018
Oil on Linen
18"x24"
\$6000



Karen Warshal
Untitled, 2016
Oil on Linen
18"x24"
\$6000



Karen Warshal
The Chess Player, 2018
Oil on Linen
18"x24"
\$6000



Karen Warshal
Salome's Dream, 2018
Oil on Linen
18"x24"
\$6000