

WHITE WASH

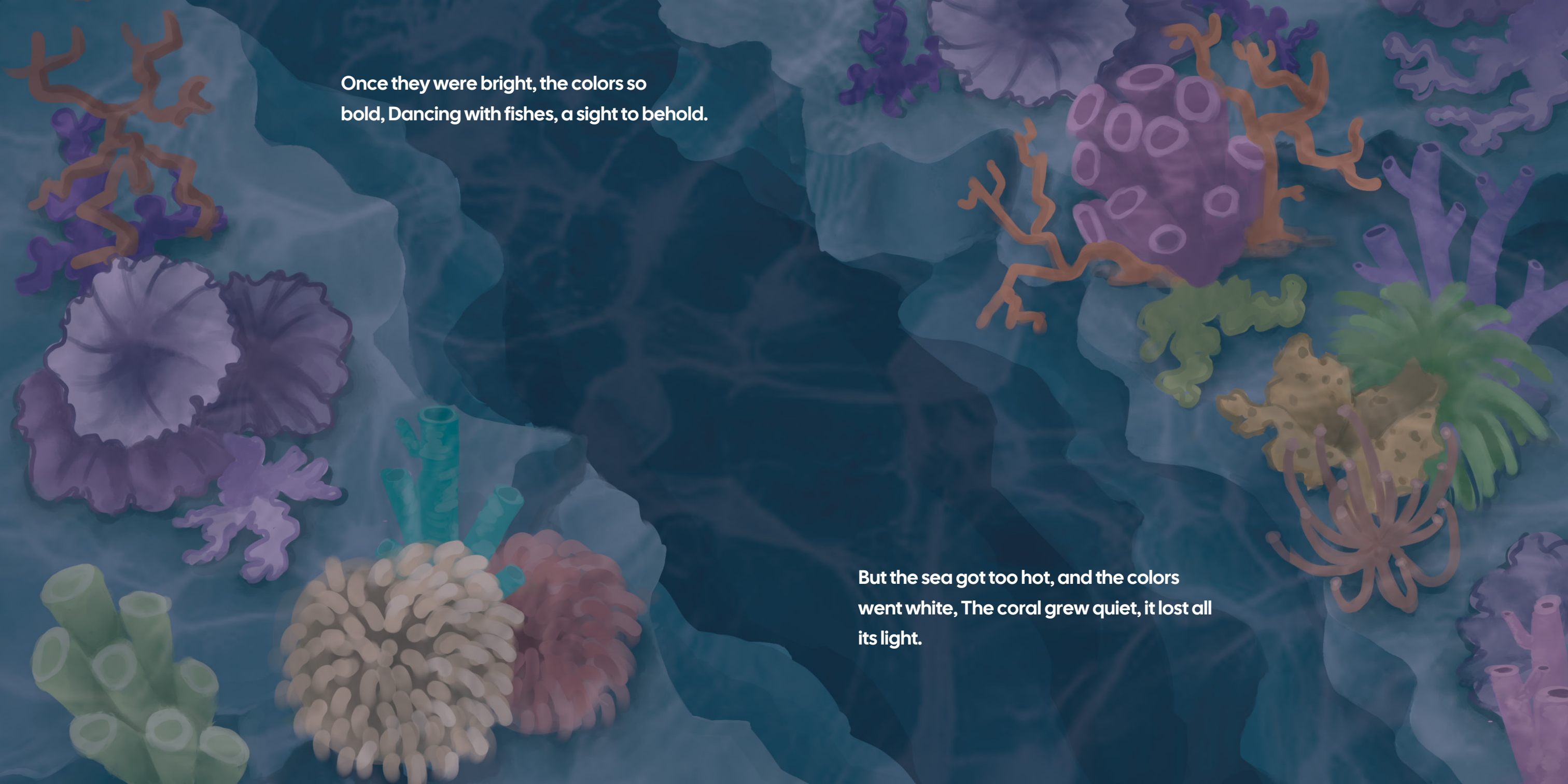


WHITE WASH

Copyright Atul Josemine, 2025

All rights reserved. No part of this publication may be reproduced, distributed, or transmitted in any form or by any means without the prior written permission of the creator, except in the case of brief quotations used in reviews or scholarly work.

Collaborators
Srishri Manipal Institute of Art, Design and Technology Canopy Collective



Once they were bright, the colors so
bold, Dancing with fishes, a sight to behold.

But the sea got too hot, and the colors
went white, The coral grew quiet, it lost all
its light.

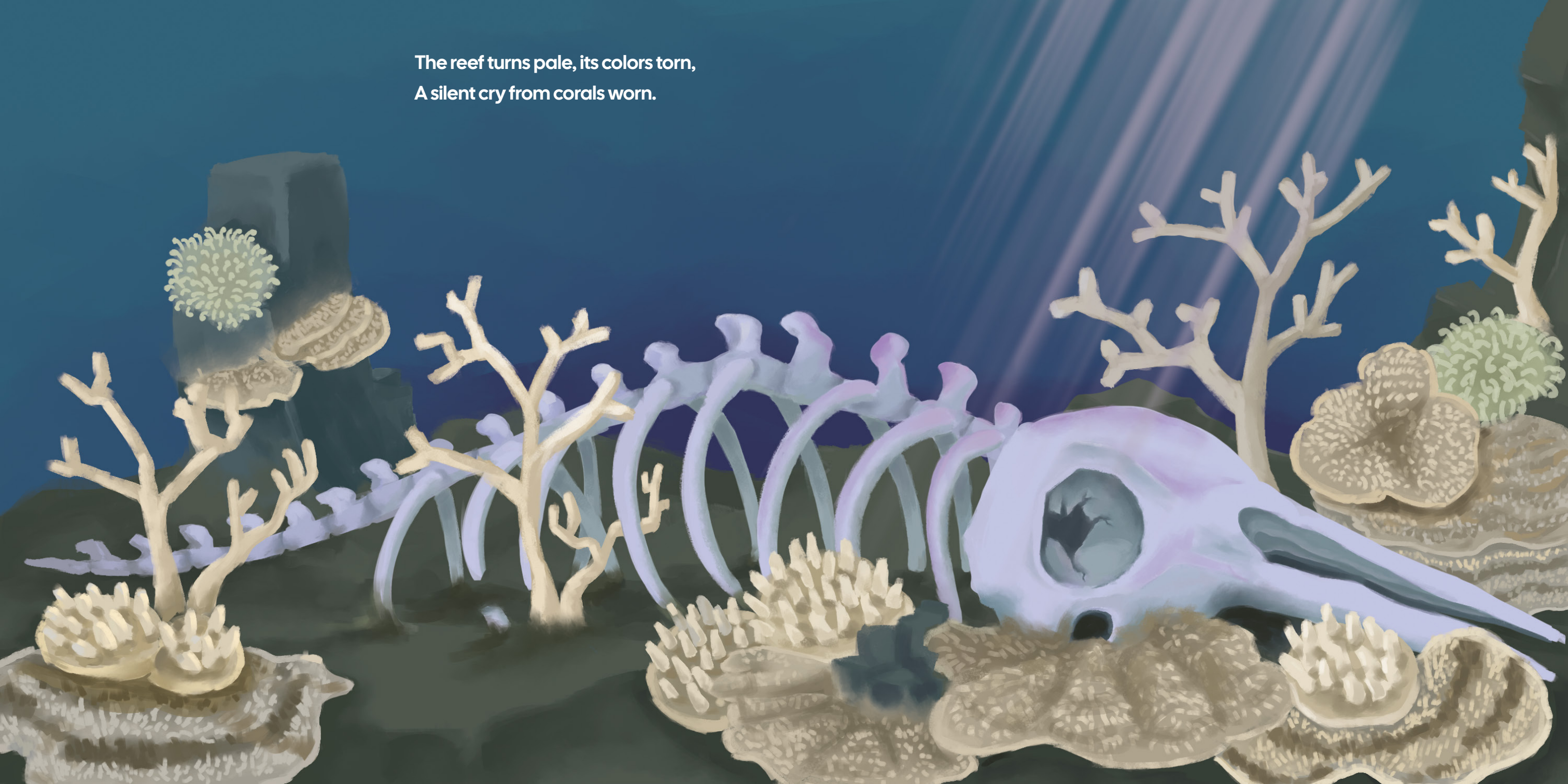
Beneath the waves, Rosanna swam,
To check the reef, so still and calm.



A frown appears, the sea looks grim,
A ship leaks oil from bow to brim.



The reef turns pale, its colors torn,
A silent cry from corals worn.

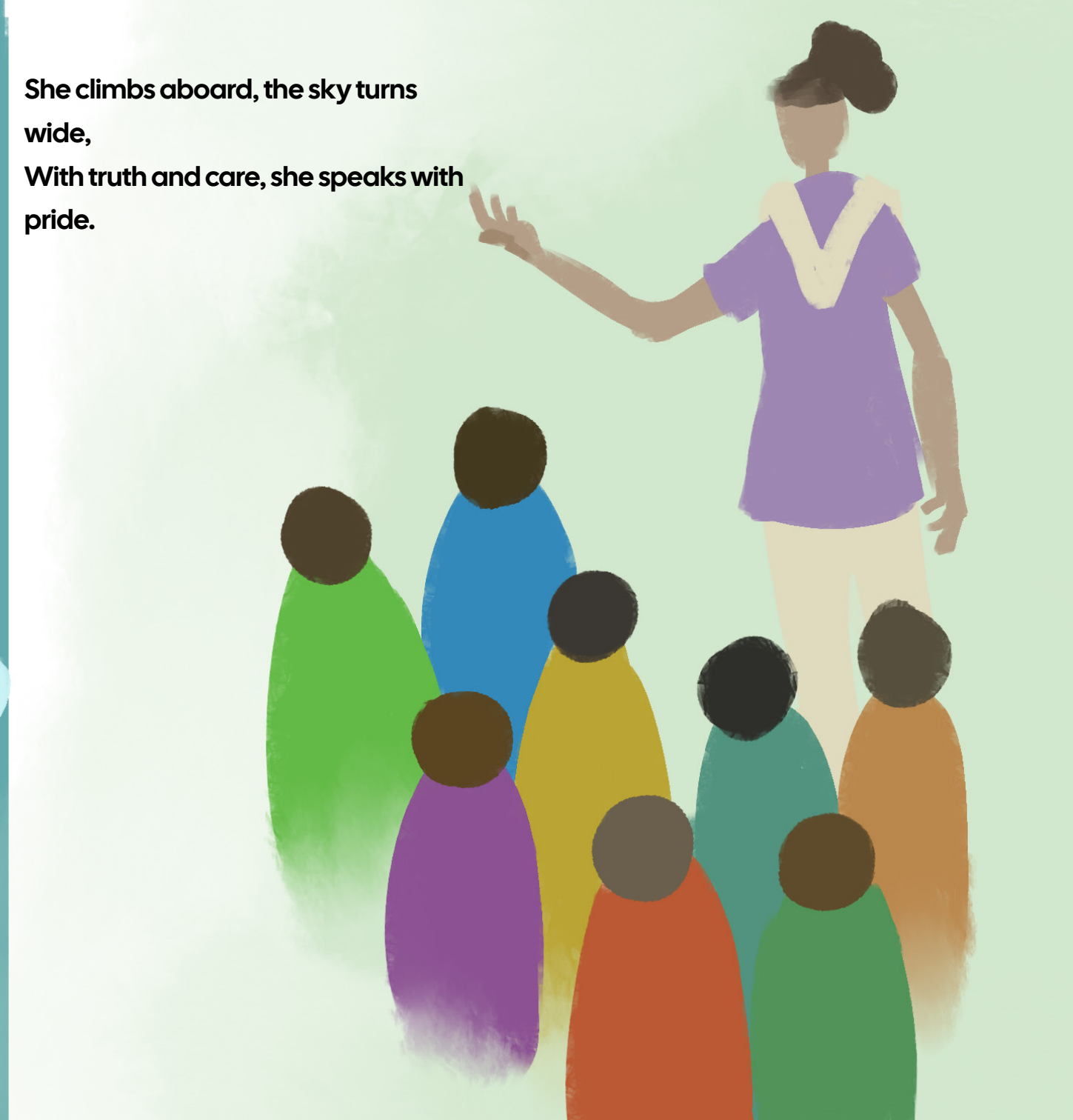


**But Rosanna's heart begins to flame,
She swears to fight and name the blame.**





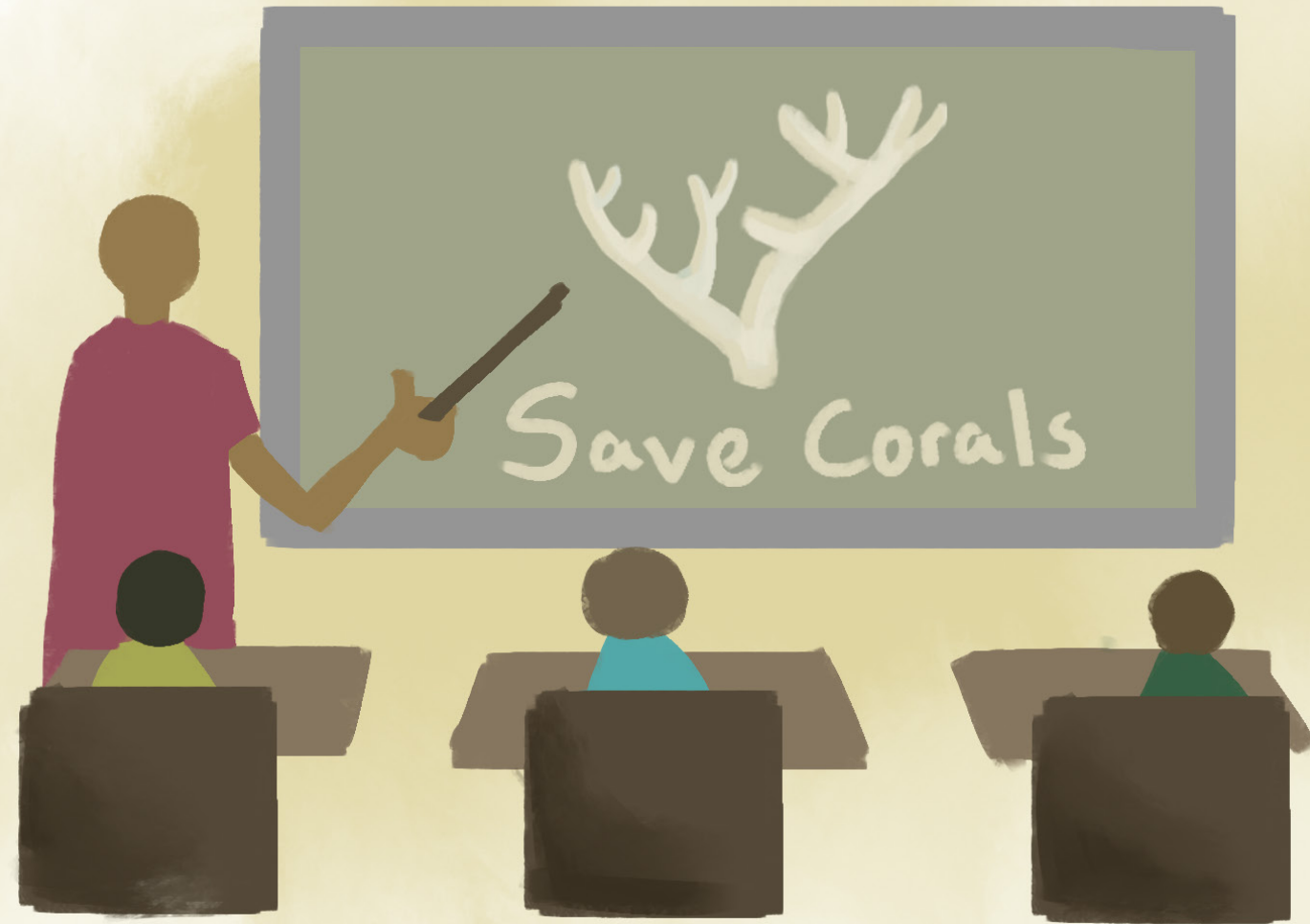
She climbs aboard, the sky turns
wide,
With truth and care, she speaks with
pride.



From hand to hand, her message flies,
Through posters bold and earnest cries.



Now grown-ups pause and children learn,
That coral's fate is our concern.



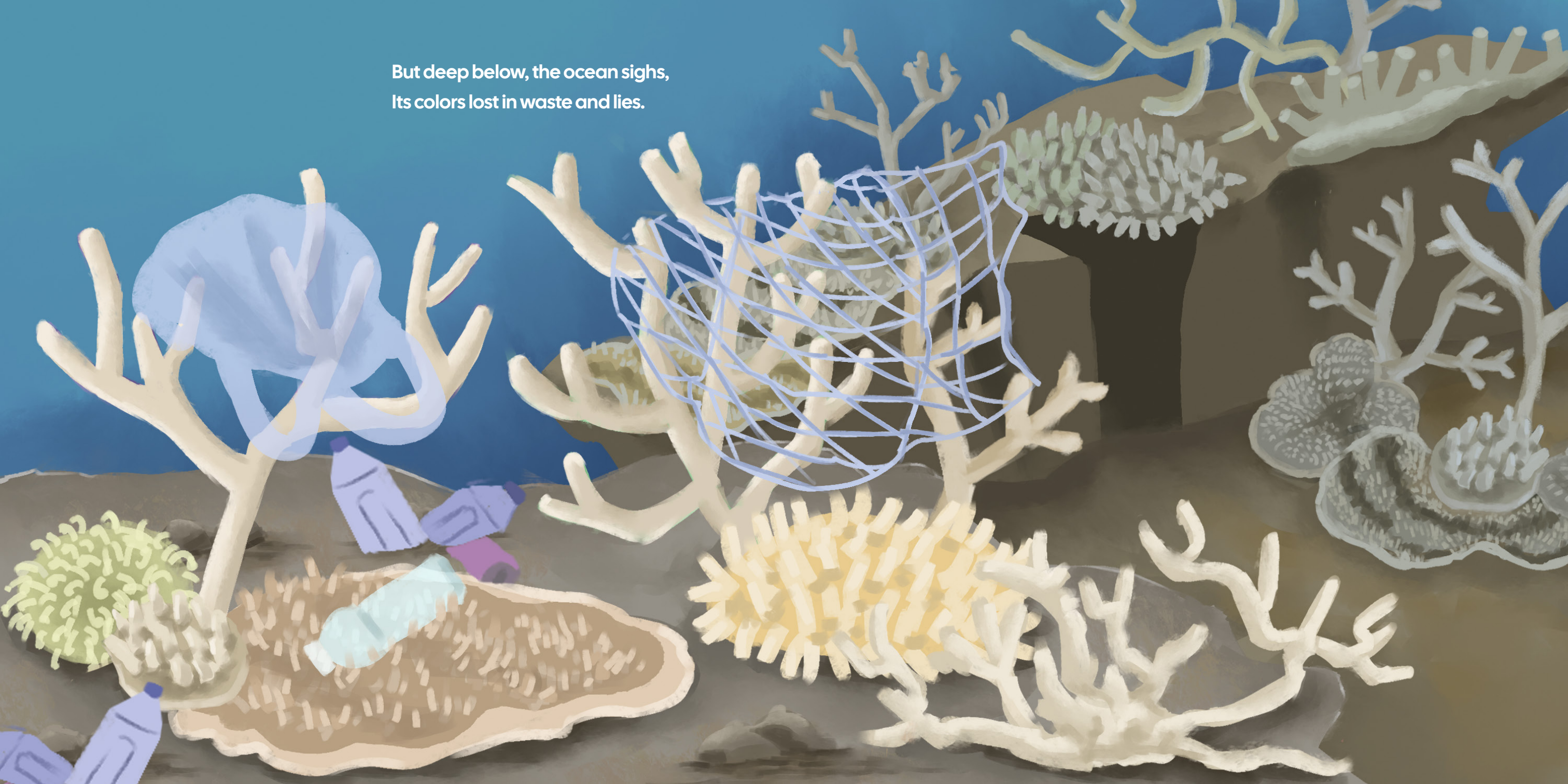
On screens and news, the story spreads,
From silent reefs to buzzing threads.



With buckets, gloves, and sandy toes,
The people clean where plastic grows.



But deep below, the ocean sighs,
Its colors lost in waste and lies.





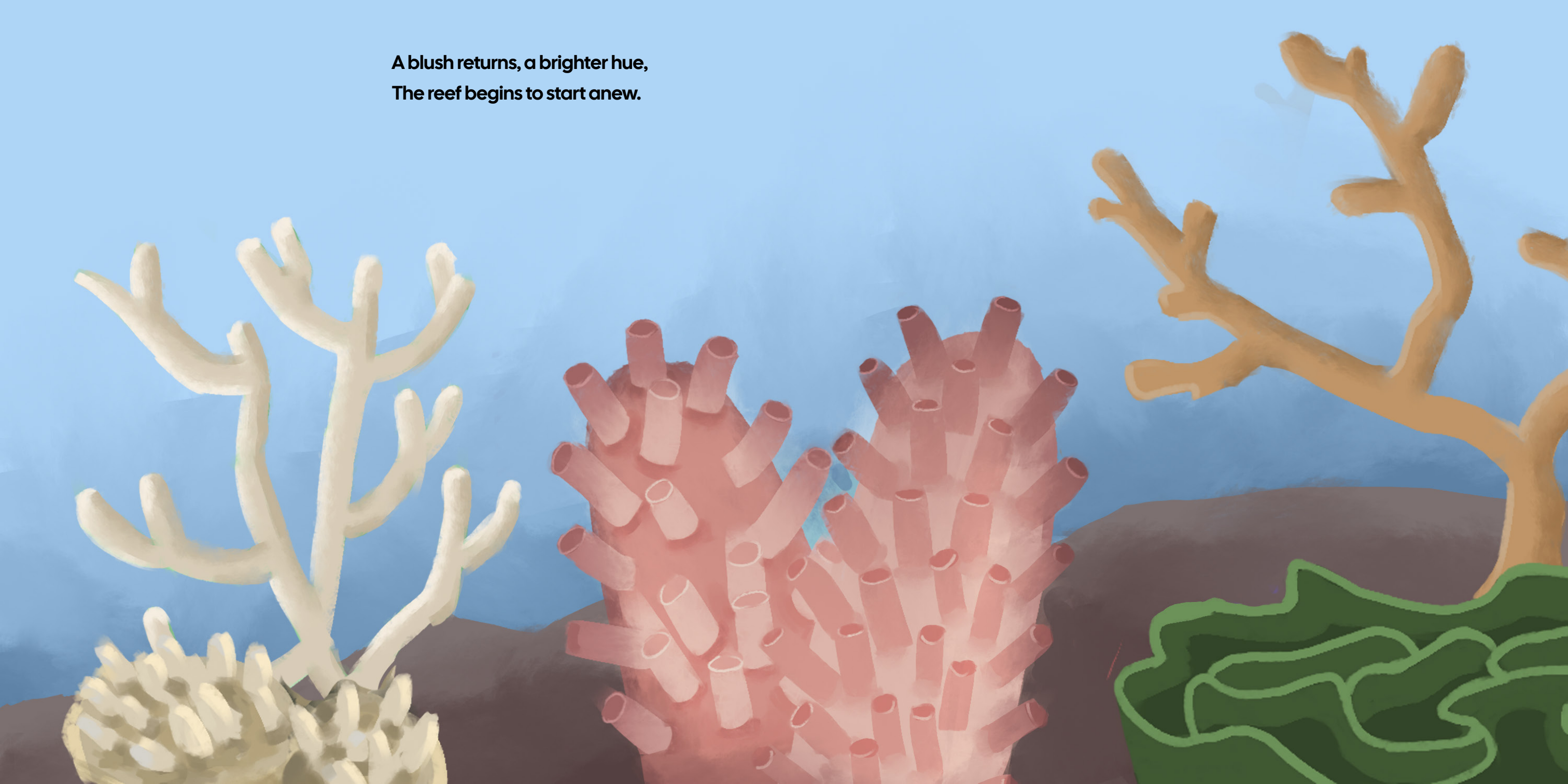
They march for reefs, their voices loud,
While divers slip beneath the crowd.



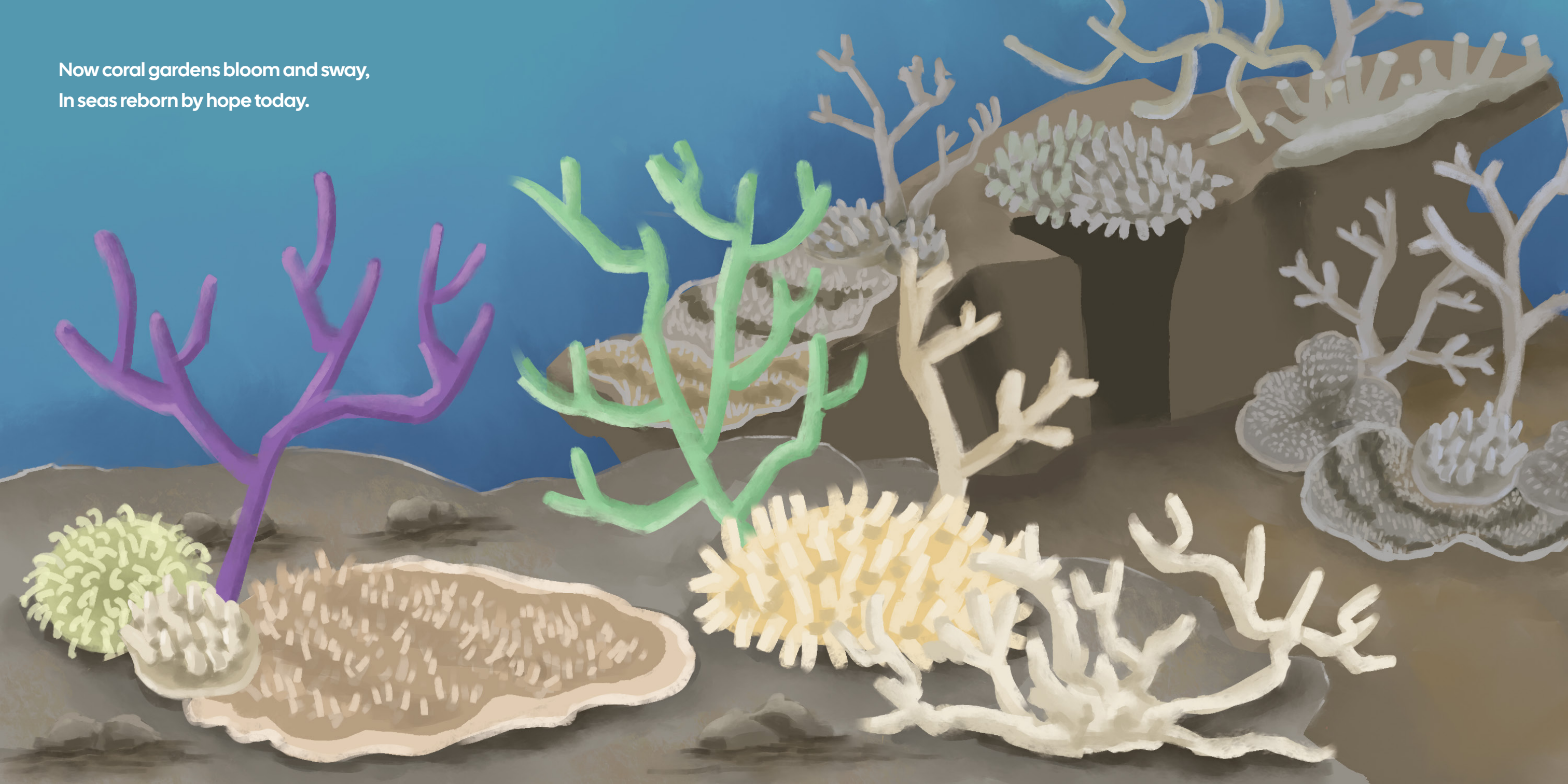
With gentle hands they lift the grime,
To give the coral back its time.



A blush returns, a brighter hue,
The reef begins to start anew.



Now coral gardens bloom and sway,
In seas reborn by hope today.



Project Note

This project explores coral reefs as both ecological treasures and memory-keepers of the ocean. Often described as the rainforests of the sea, coral reefs support an incredible diversity of marine life and act as indicators of environmental health. Through visual storytelling and research, the project highlights the devastating impact of coral bleaching — a phenomenon driven by rising sea temperatures and human interference. At the heart of this exploration is the idea of memory: how corals store traces of change in their skeletal structure, and how communities, scientists, and individuals remember what once thrived. By examining conservation efforts and the role of awareness, the project also reflects on how remembering fosters responsibility.