

Qiong Wu
Paavo Pakkanen

Course

MA Interior Architecture
SARK-E5035

Researching Space

Contact

qiong.wu@aalto.fi
paavo.pakkanen@aalto.fi

Unisport

Wellbeing design for Unisport

Index

I



Spatial analysis

II



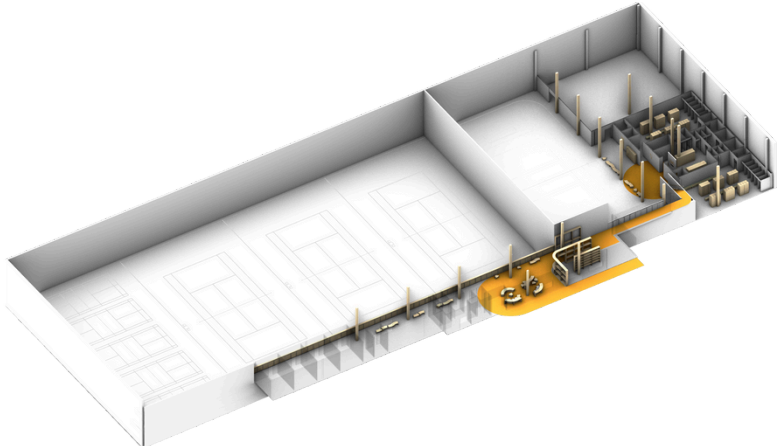
Research findings

III



Concept

IV



Spatial implementation



Spatial analysis

Intervention Space

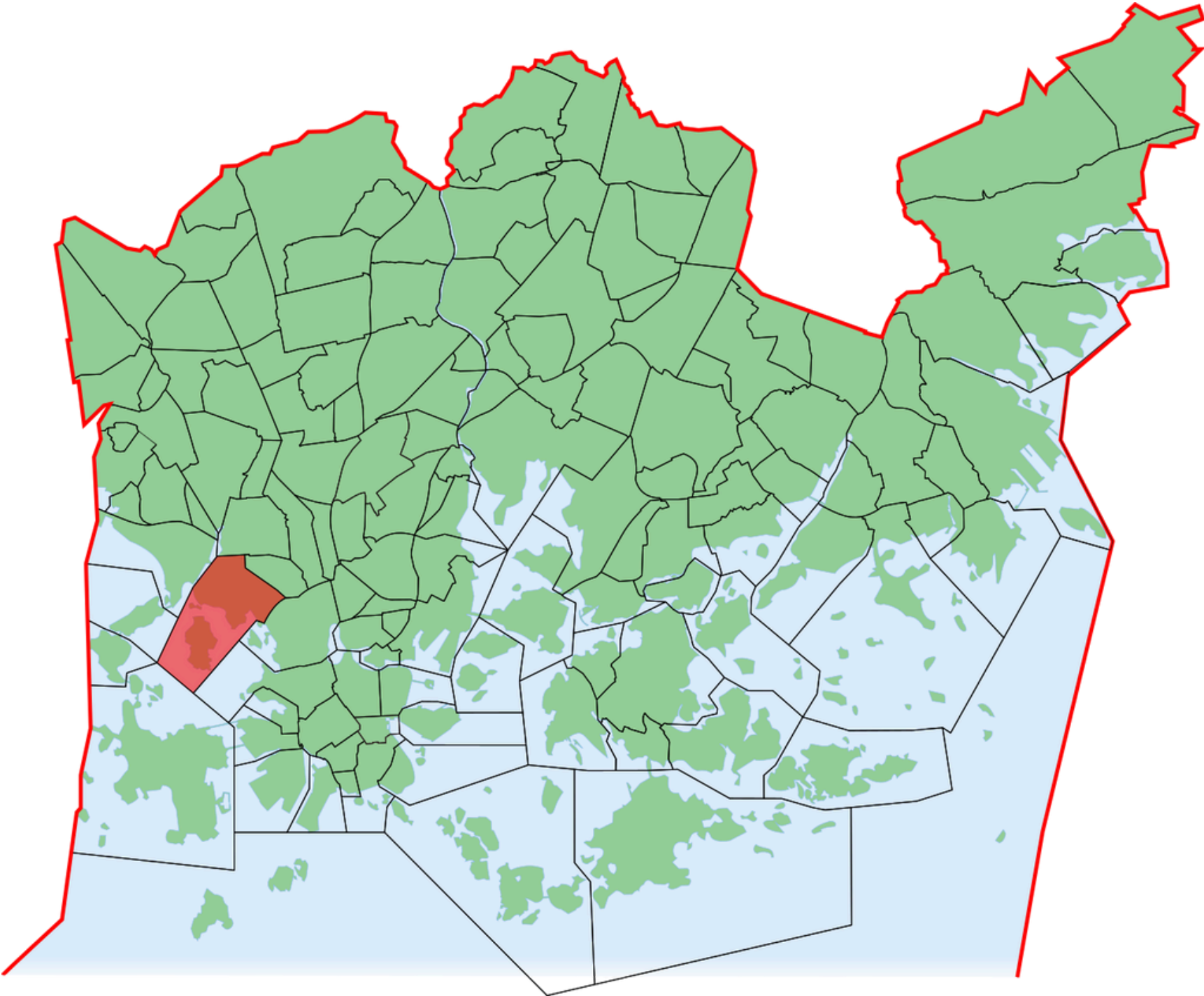
Meilahti

Meilahti is a neighbourhood of Helsinki between Mannerheimintie (the main entrance road to Helsinki) and a bay named Seurasaarenselkä. Most of the houses in Meilahti were built in the 1930s and 1940s. Meilahti is home to over 6700 people. Meilahti is the location of Mäntyniemi, official residence of the President of Finland, as well as Kesäranta, the official residence of Prime Minister of Finland. Near Mäntyniemi is the former presidential residence, Tamminiemi, which is today a museum dedicated to president Urho Kekkonen.

For the 1952 Summer Olympics, the neighborhood hosted the rowing events.

INFO:

Country:	Finland
Region:	Uusimaa
District:	Western
Area	2.12km2
Population	6792
Density	3,09/km2
Postal Codes	00270,00250
Subdivision number	15
Neighbouring subdivisions	Vanha Munkkiniemi, Laakso, Ruskeasuo, Kuusisaari, Lehtisaari, Taka-Töölö, Etu-Töölö



Spatial analysis

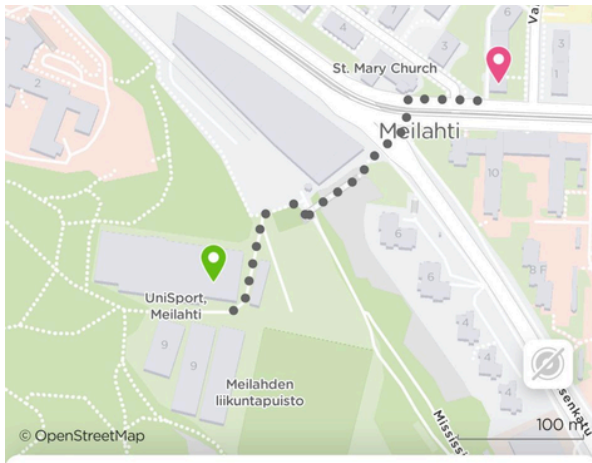
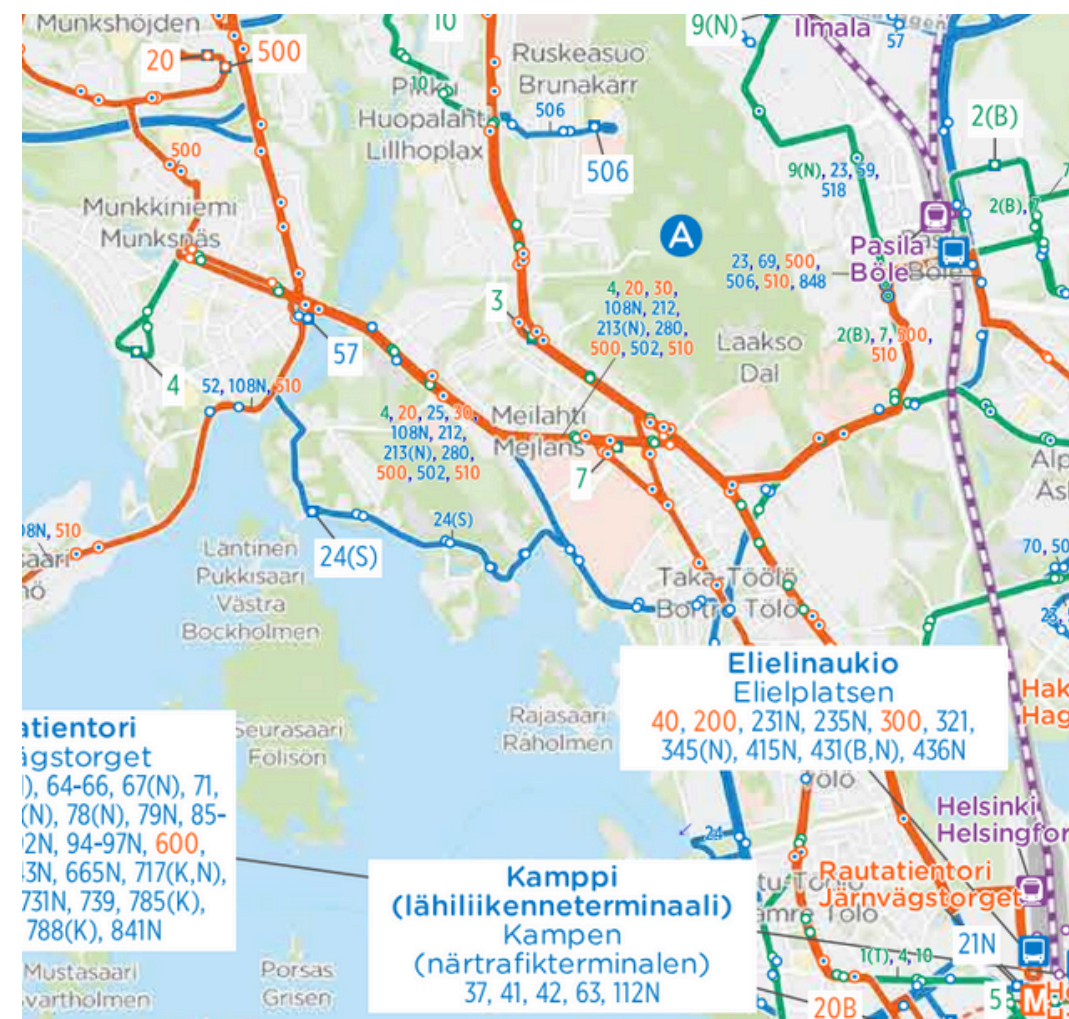
Research findings

Concept

Spatial implementation

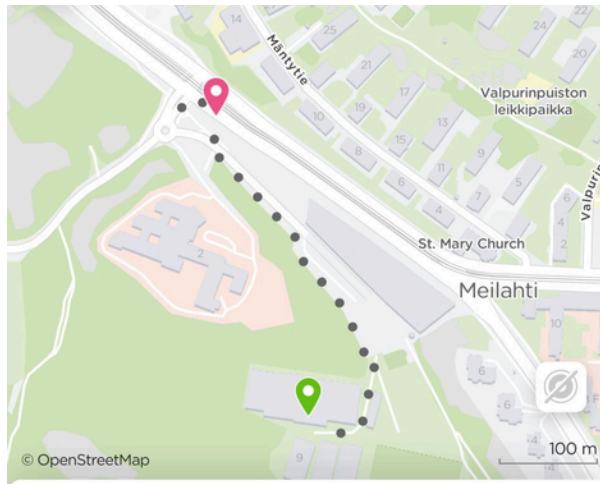
Public Transport Connections

Zaidankatu 9



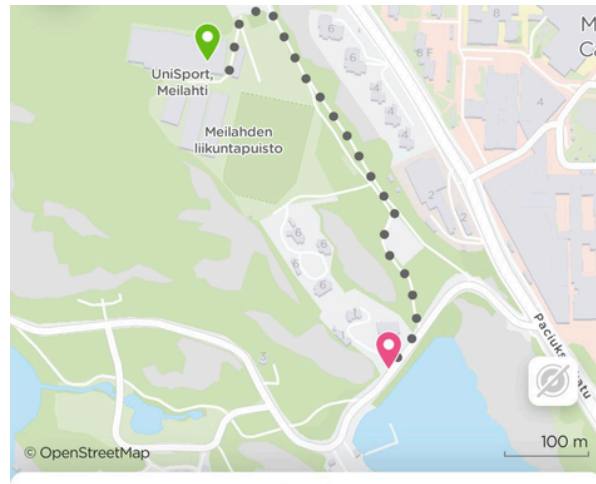
7 min
10:07 - 10:14

7 min
384 m



8 min
09:47 - 09:54

8 min
517 m



9 min
10:10 - 10:19

9 min
634 m

Resource: HSL App

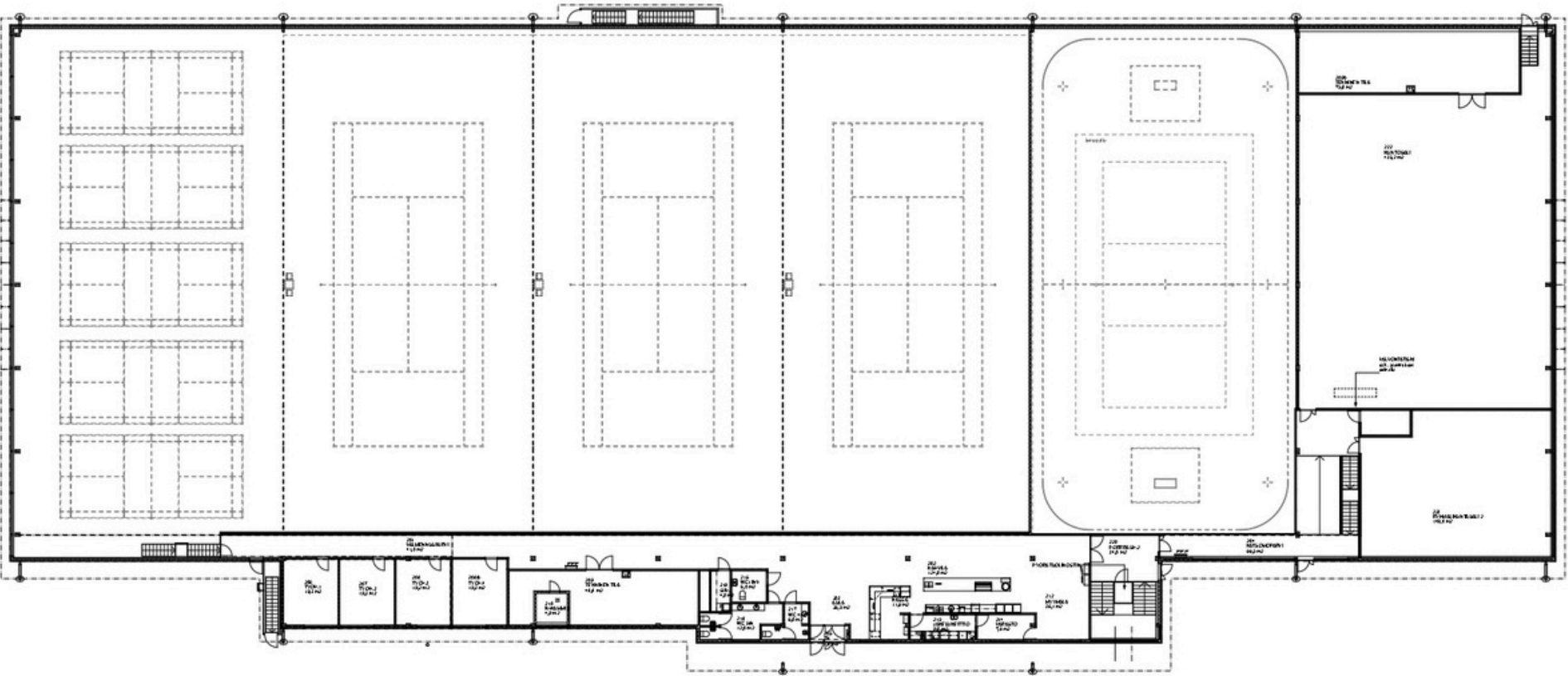
Spatial analysis

Research findings

Concept

Spatial implementation

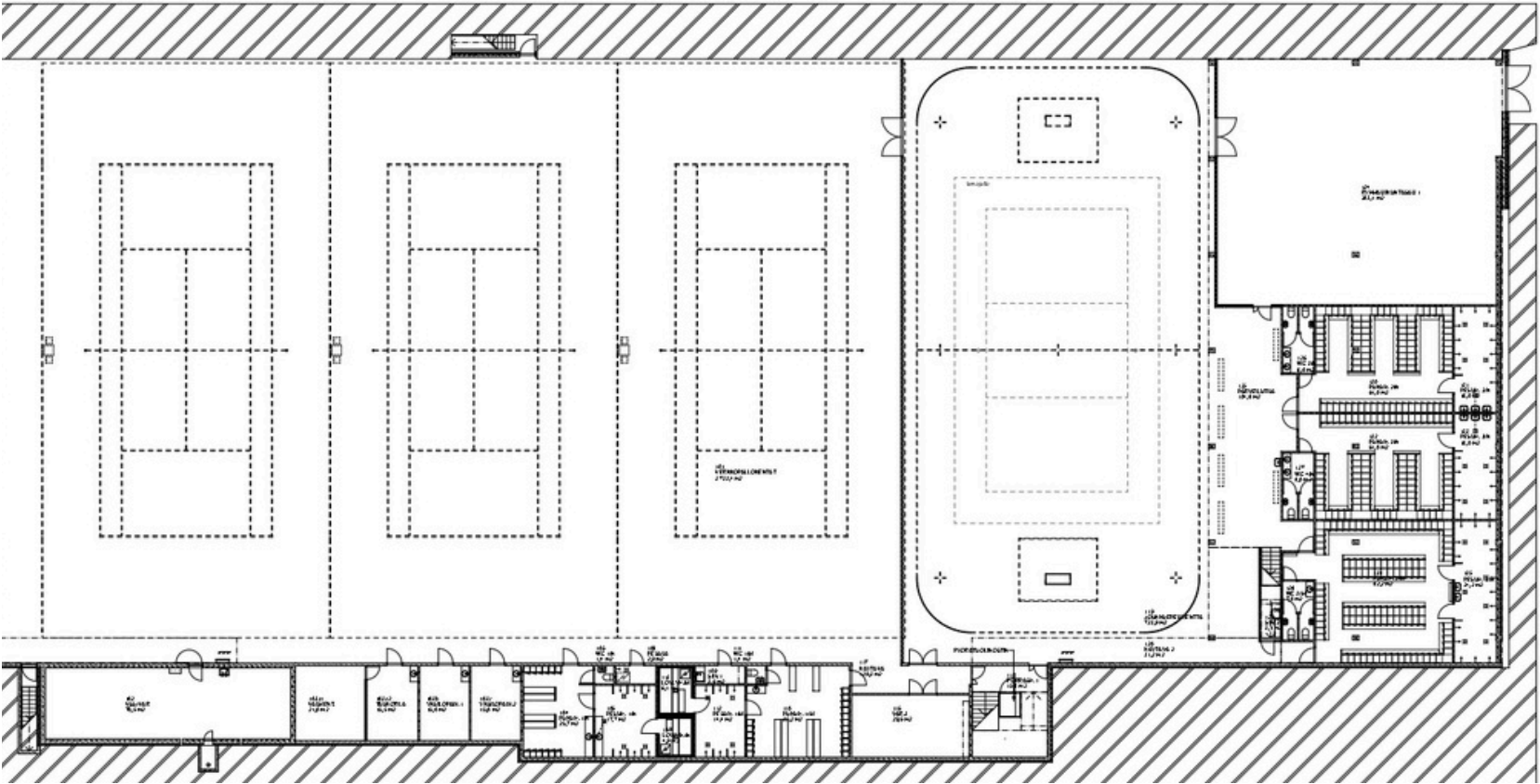
Floorplan 2nd floor



Spatial analysis

Research findings

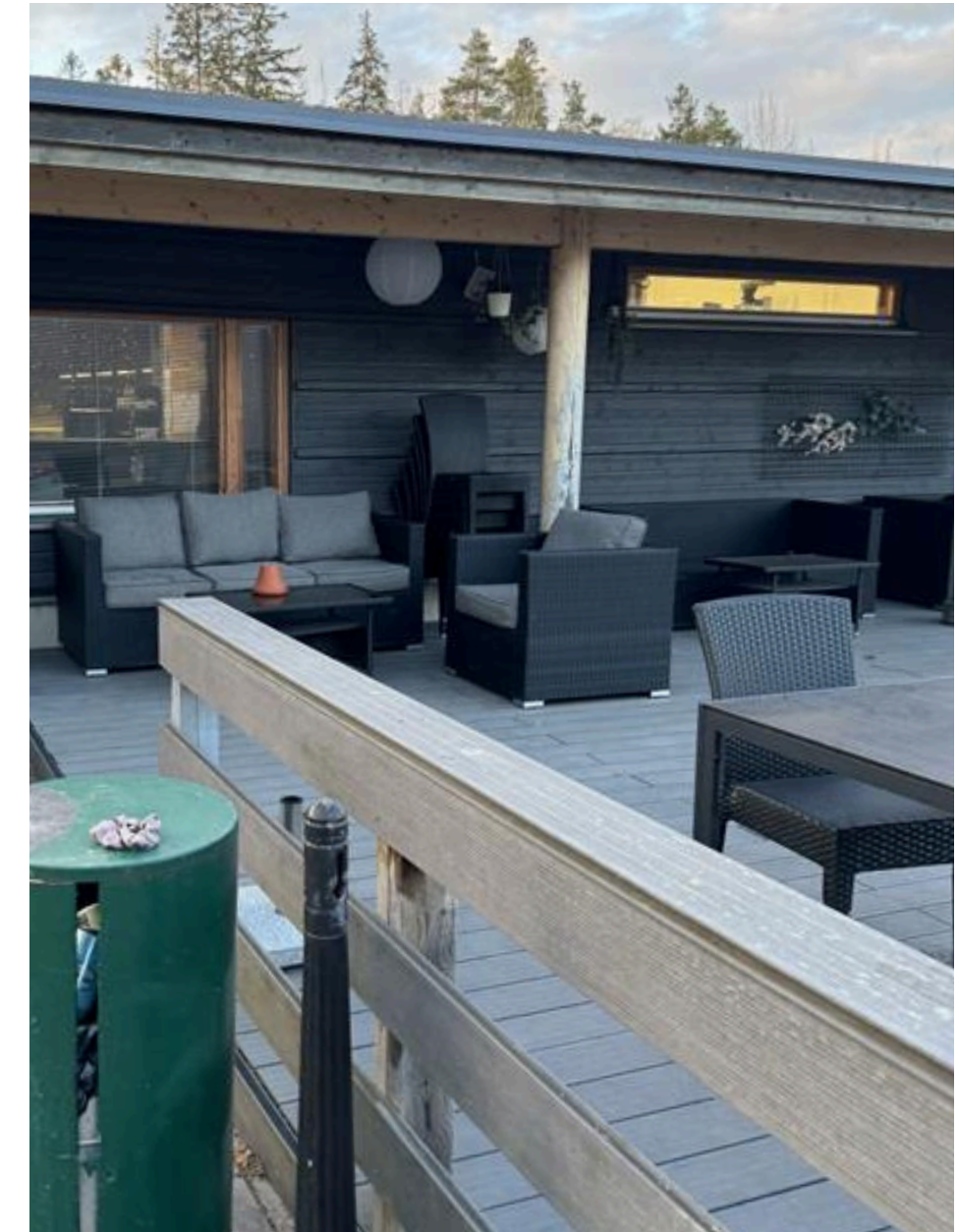
Floorplan 1st floor



Concept

Spatial implementation

Site analysis



Spatial analysis

Research findings

Concept

Spatial implementation

Wayfinding



Spatial analysis

Research findings

Concept

Spatial implementation

Cafe/ lobby area



Spatial analysis

Research findings



Concept



Spatial implementation

Locker rooms



Spatial analysis

Research findings

Concept

Spatial implementation

Unisports own notes about the space

Challenges

The 20 years old building is outdated

Untidiness: Cleaning earley in the morning,
rushhours in the evening

Is there enough inclusiviness?

Goals

Customer in the center

Functionality, easy to use

Smooth touchpoints

Value

Independent use

Unisex

Sense of community



Unisport brand identity

Unisport is a sports service provider owned by the University of Helsinki, Aalto University, Hanken School of Economics, and the University of the Arts Helsinki

Formerly known as Yliopistoliikunta, UniSport was established in 1967.

The Customers are students and staff members from universities with diverse level of experience in sports

Unisport tries to promote well-being by fostering a culture of physical activity and enabling participation in sports.

Resource: Unisport



Spatial analysis

Research findings

Concept

Spatial implementation

Hagius

Gonzalez Haase Architects
Berlin, Germany 2019

‘We asked the architects to design a space that would give guests a sense of being disconnected from everyday life during their workout, despite being located in the middle of the city,’ says Nicolas. ‘We wanted to minimise external irritants and purposefully counteract the excess noise of modern life.’

Resource: Gonzalez Haase Architects

Spatial analysis

Research findings

Concept

Spatial implementation



Climbing District Canal Saint-Martin

Paris, France

Example of exercise space with strong communal aspect.

Resource: SortiraParis

Spatial analysis

Research findings

Concept

Spatial implementation



A large, solid orange circle is positioned in the upper right quadrant of the image, partially overlapping the text.

Research findings

What aspects users currently enjoy at Unisport Meilahti



Key needs for users and staff at Unisport

**Nonbinary
locker rooms**

**Accessible toilets
downstairs**

**More storage
space around the
reception area**

**More shelves in the
storage area**

**More privacy to the
locker rooms**

More privacy to the gym

**Functions that
support other sports
hobbies, like climbing**

**Infographics
to the gym**

**No space dedicated
for warming up**

Key pain points users and staff at Unisport

Confusing wayfinding

Outdated look and feel of the spaces

Lack of privacy in the locker rooms

Too bright lighting

Nonlogical distribution of gym machines

No space dedicated for warming up

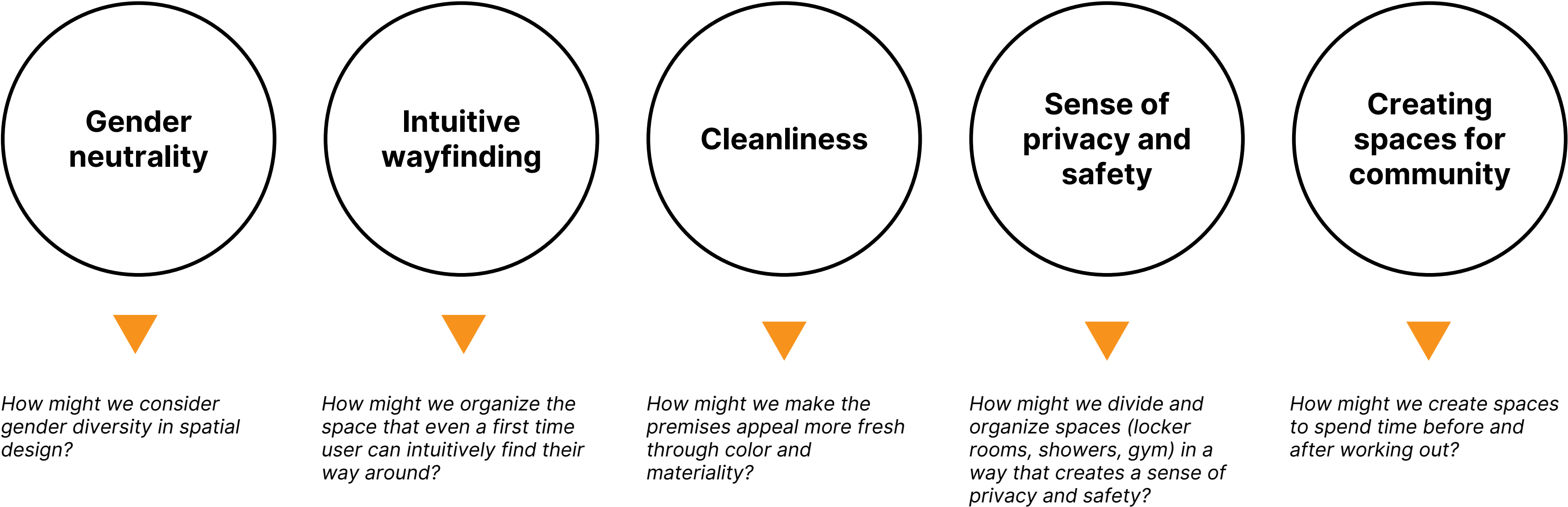
Not functional cashier space

Too small lockers

Muddy stairway

Big windows make the gym too hot

Opportunity areas from the user interviews



Spatial analysis

Research findings

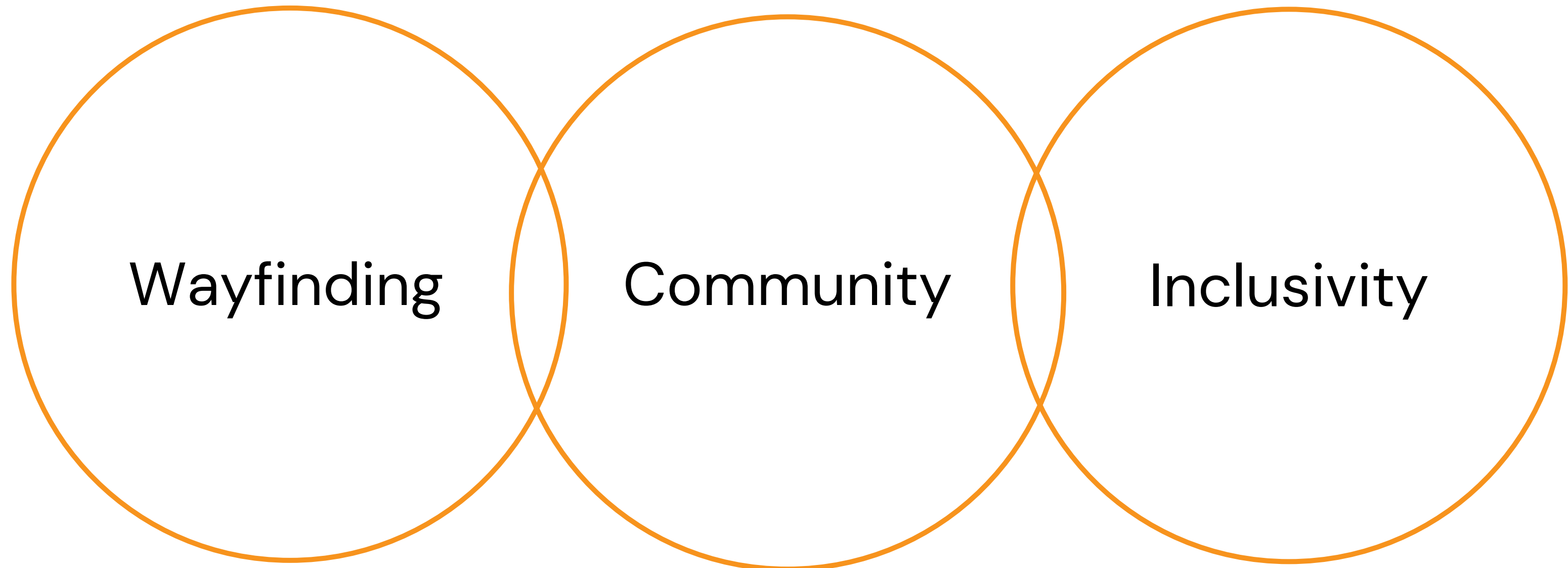
Concept

Spatial implementation



Concept

3 themes, 3 concepts

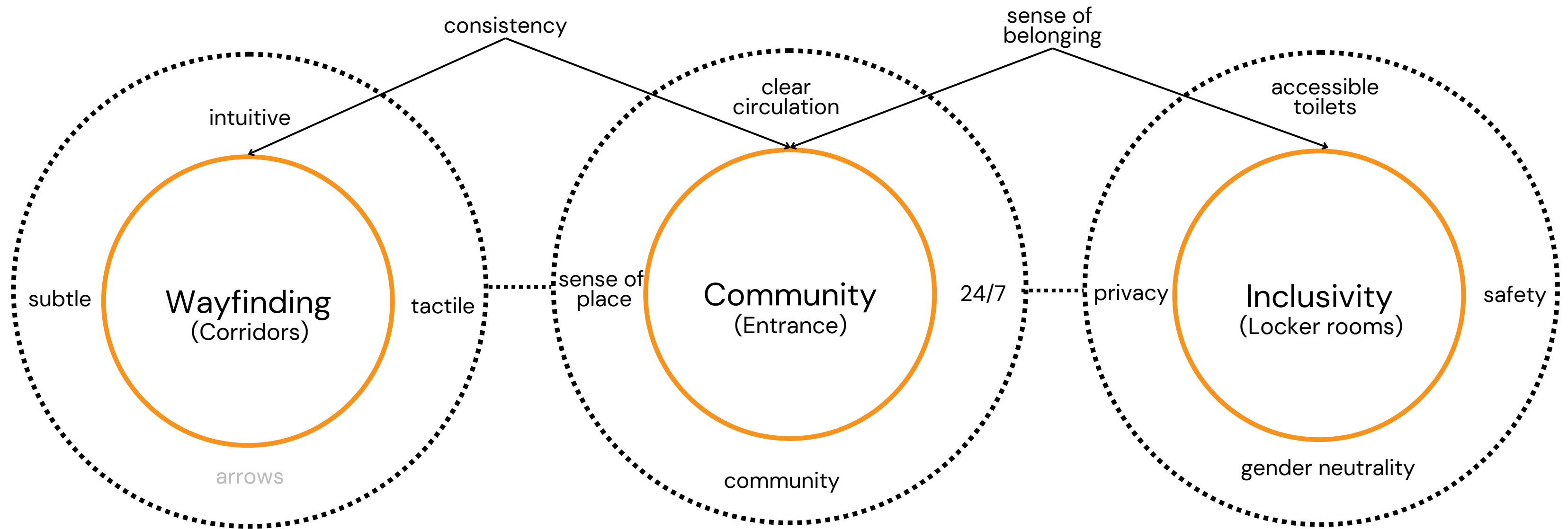


Spatial analysis

Research findings

Concept

Spatial implementation



Spatial analysis

Research findings

Concept

Spatial implementation

Wayfinding

How to guide people through the premises in a intuitive way?

Incorporating floor level wayfinding as an integral part of interior design to enhance intuitive and accessible navigation for users.

Less visual clutter, clear hierarchy

Consistency through all the premises



Spatial analysis

Research findings

Concept

Spatial implementation

Community

How to create a communal aspect to the exercise experience?

Designing an open and welcoming entrance area that serves as a clear focal point for the other spaces. The interior is based on the modular furniture that can be adjusted to fit the users needs.

Adapting the café service into a modular, closable unit

Adding the possibility to use the space independently 24/7

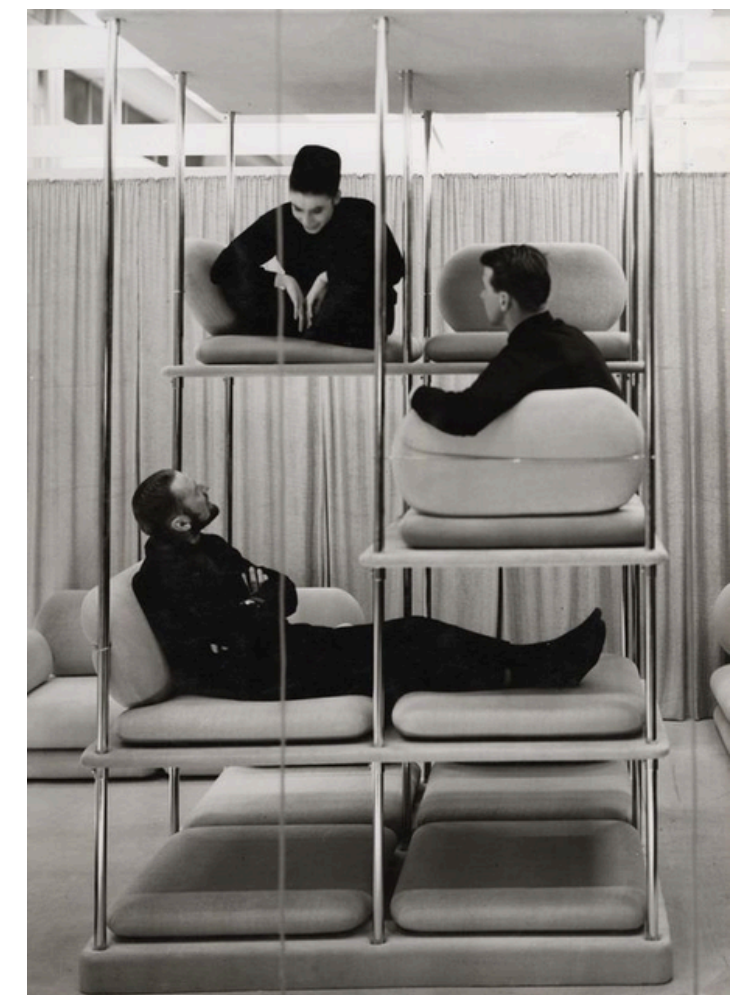
Improving the circulation with clear spatial hierarchy and wayfinding

Having more natural light by opening the space

Utilizing the card reader in the lobby as a symbol of Unisport entrance



Pierre Paulin; Modular 'Ensemble Fauteuil'



Verner Panton - Multi-level Lounger

Spatial analysis

Research findings

Concept

Spatial implementation

Inclusivity

How to design safe and economical locker rooms for everybody?

Designing a new gender-inclusive locker room concept to complement the existing facilities, aimed at providing increased privacy.

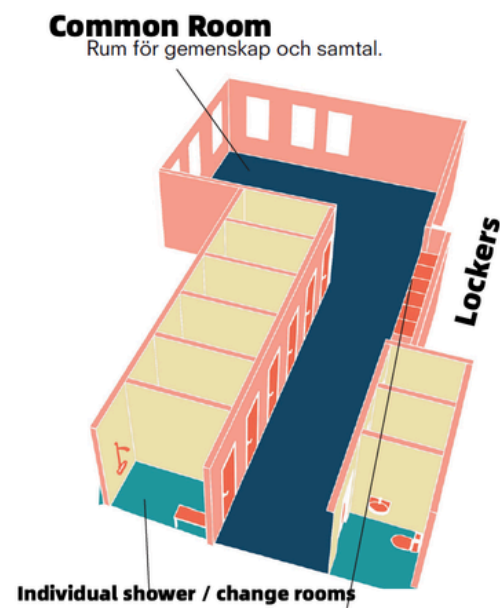
Three different spatially equal locker rooms

In private locker room concept the shower areas are enclosed cabinets, offering privacy for both changing and showering

The concept can be also applied to other Unisports



Oodi Library, unisex toilets



*Swedish gender neutral "recovery room" concept with separated showers that allows male and female firefighters to debrief together after calls
Resource: CTIF*

Wayfinding

Incorporating floor level wayfinding as an integral part of interior design enhances intuitive and accessible navigation for users.

Community

Designing an open and welcoming entrance area that serves as a clear focal point for the other spaces. The interior is based on the modular furniture that can be adjusted to fit the users needs.

Inclusivity

Designing a new gender-inclusive locker room concept to complement the existing facilities, aimed at providing increased privacy.

Wayfinding

Incorporating floor level wayfinding as an integral part of interior design enhances intuitive and accessible navigation for users.

Community

Designing an open and welcoming entrance area that serves as a clear focal point for the other spaces. The interior is based on the modular furniture that can be adjusted to fit the users needs.

Inclusivity

Designing a new gender-inclusive locker room concept to complement the existing facilities, aimed at providing increased privacy.

An inclusive space for wellbeing that cultivates a sense of community



Spatial implementation

3 themes, 3 concepts, 3 design solutions

Theme

Wayfinding

Community

Inclusivity

3 themes, 3 concepts, 3 design solutions

Theme

Wayfinding



Community



Inclusivity



3 themes, 3 concepts, 3 design solutions

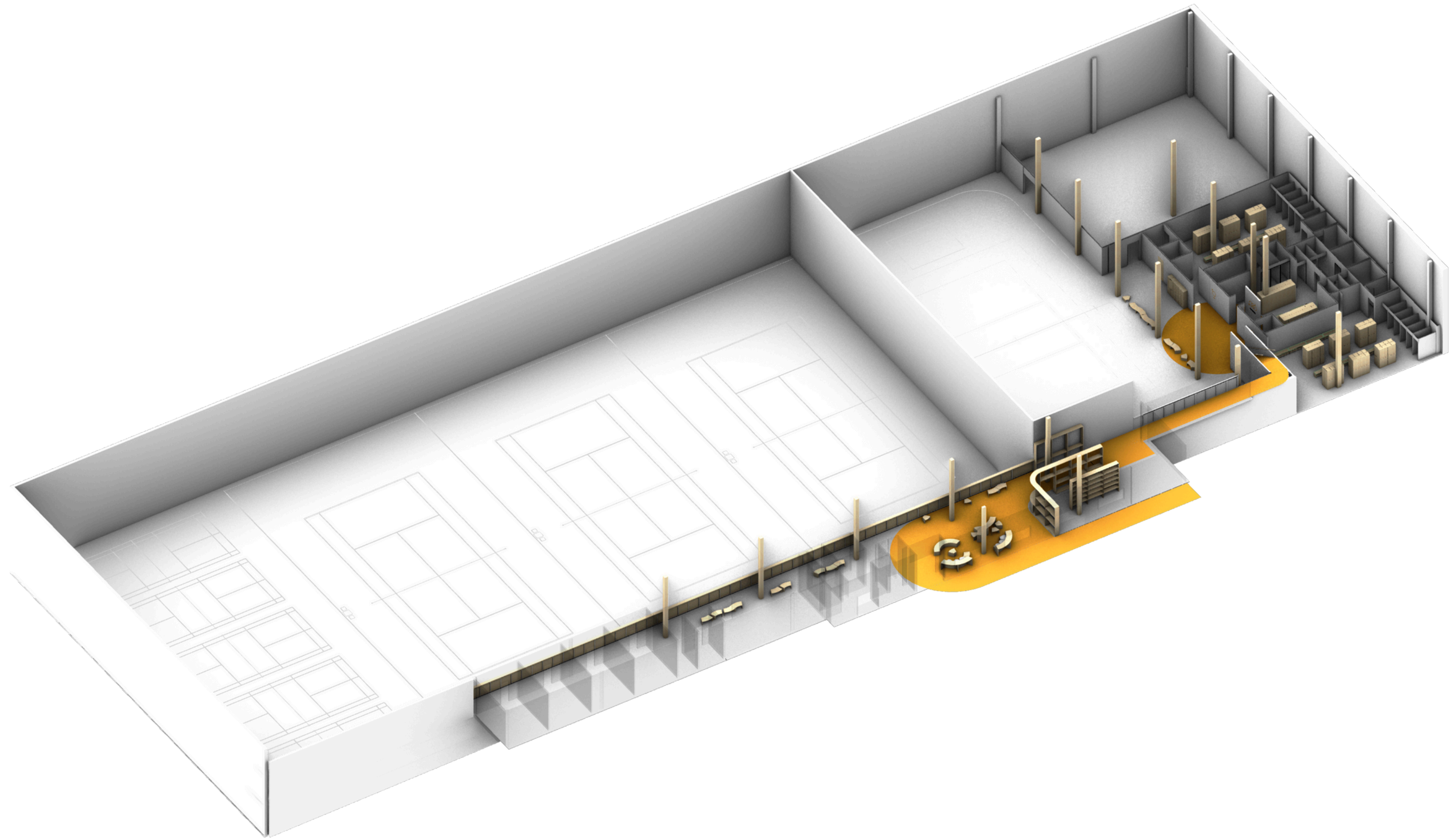
Theme		Space
Wayfinding	▶	Corridors
Community	▶	Lobby
Inclusivity	▶	Locker rooms

3 themes, 3 concepts, 3 design solutions

Theme		Space	
Wayfinding	▶	Corridors	▶
Community	▶	Lobby	▶
Inclusivity	▶	Locker rooms	▶

3 themes, 3 concepts, 3 design solutions

Theme		Space		Design solution
Wayfinding	▶	Corridors	▶	Floor level wayfinding
Community	▶	Lobby	▶	Modular furniture
Inclusivity	▶	Locker rooms	▶	Closable shower unit



Spatial analysis

Research findings

Concept

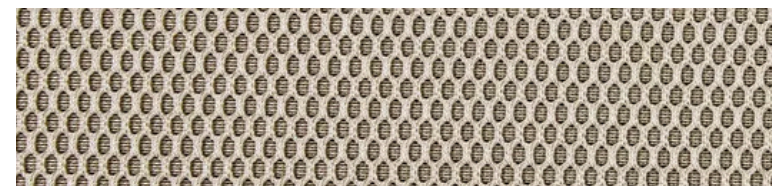
Spatial implementation



Plywood



Pantone 138



Trevira



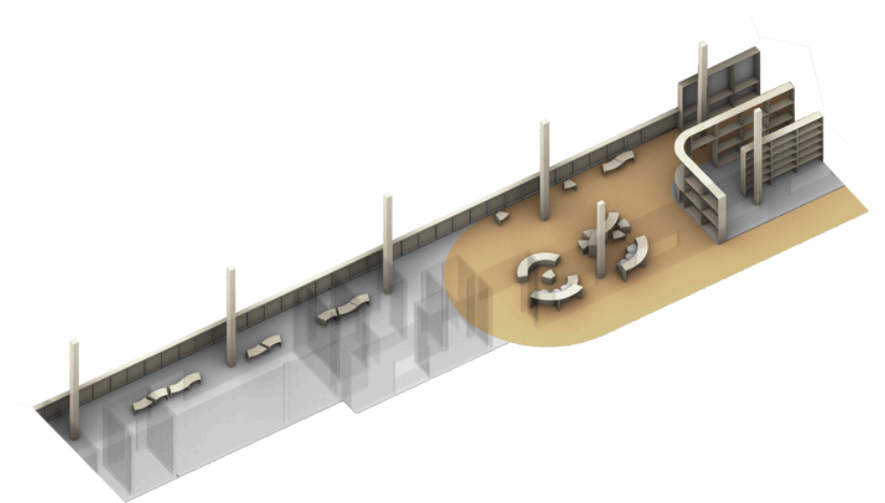
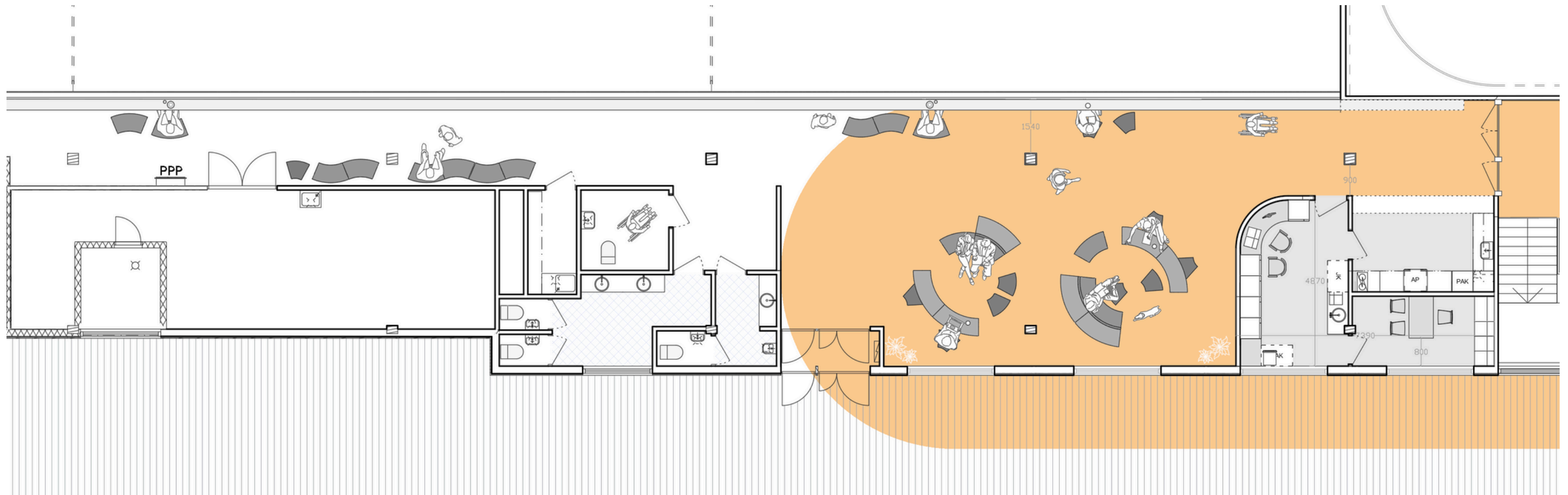
Polycarbonate

Spatial analysis

Research findings

Concept

Spatial implementation

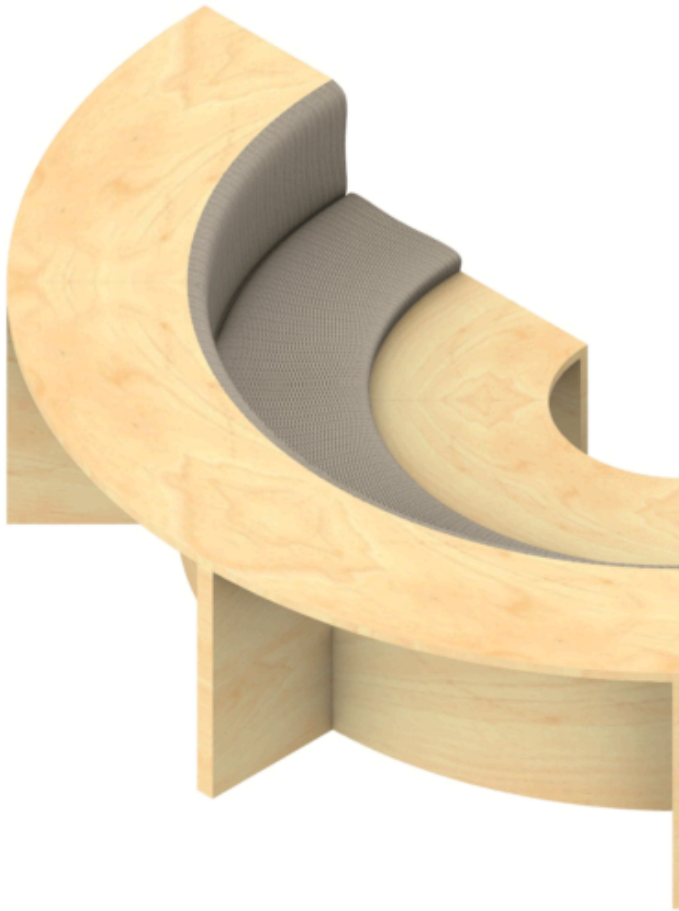


Spatial analysis

Research findings

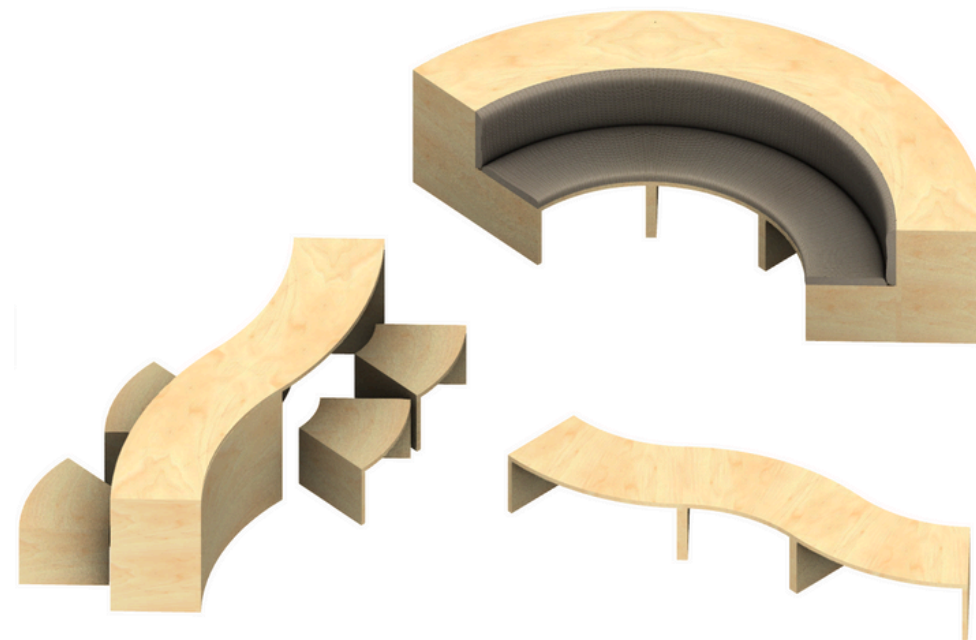
Concept

Spatial implementation

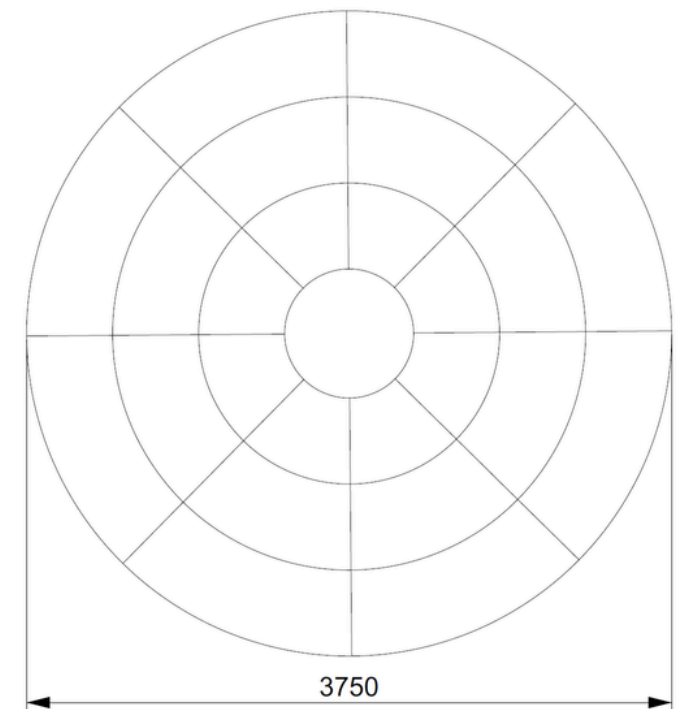


Spatial analysis

Research findings



Concept



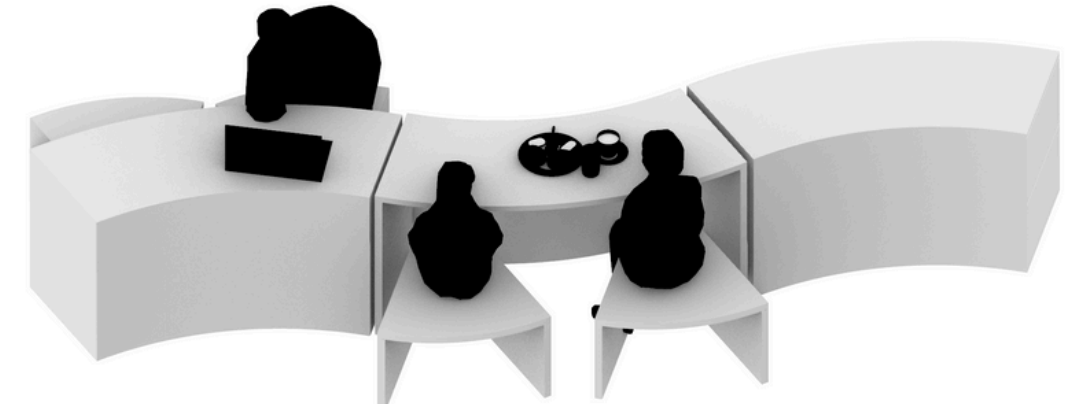
Spatial implementation



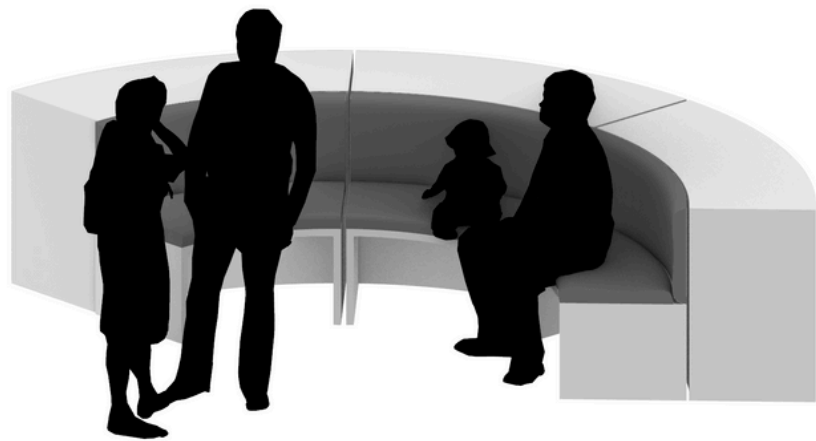
studying/working



eating/drinking



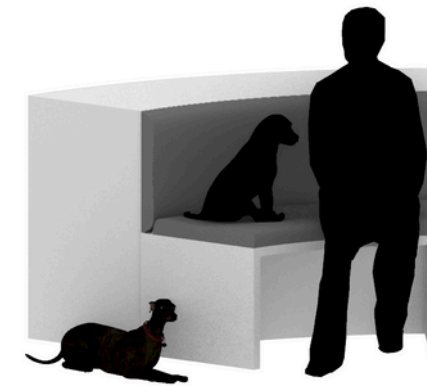
interaction



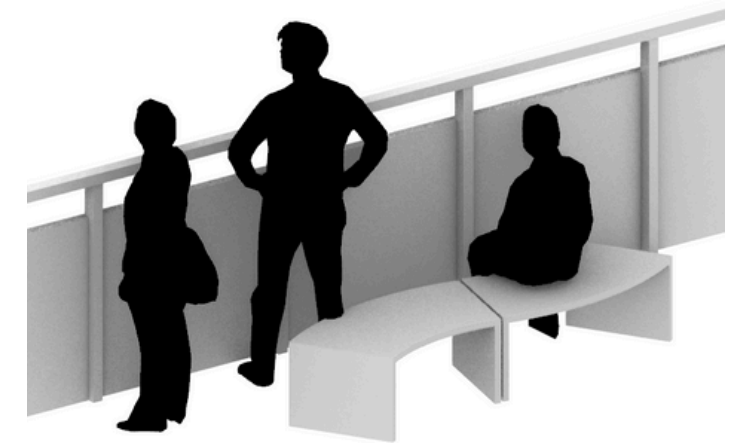
socializing



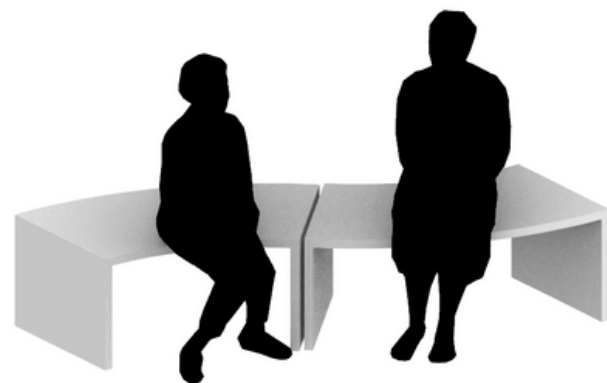
reading



space for pets



observing tennis courts



waiting



resting



gather



Spatial analysis

Research findings



Concept

Spatial implementation



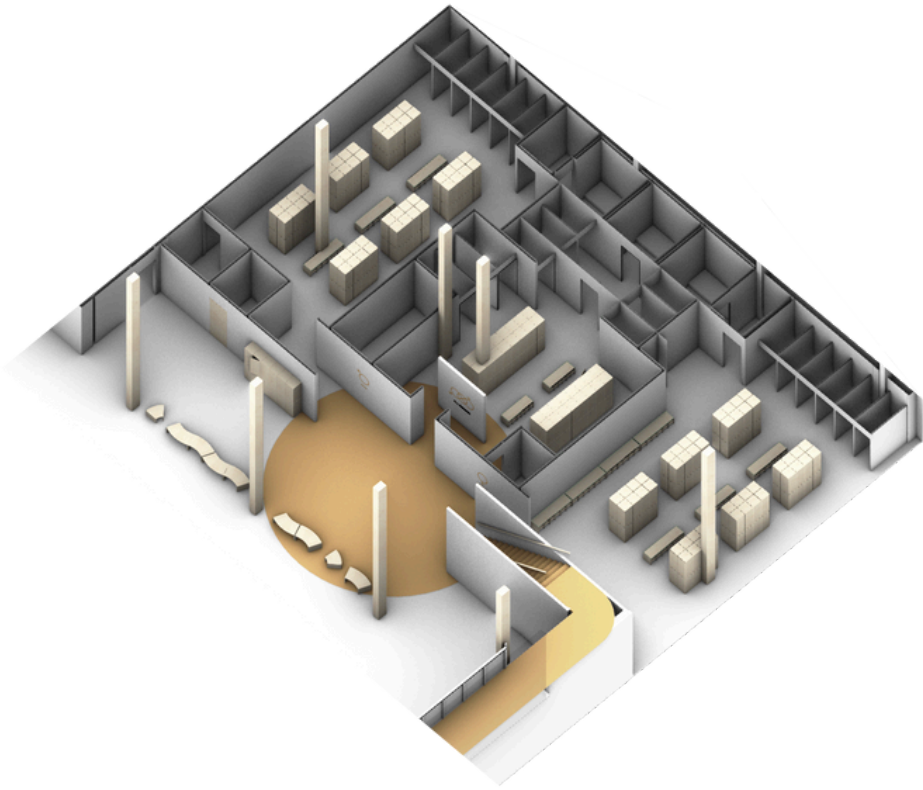
Spatial analysis

Research findings



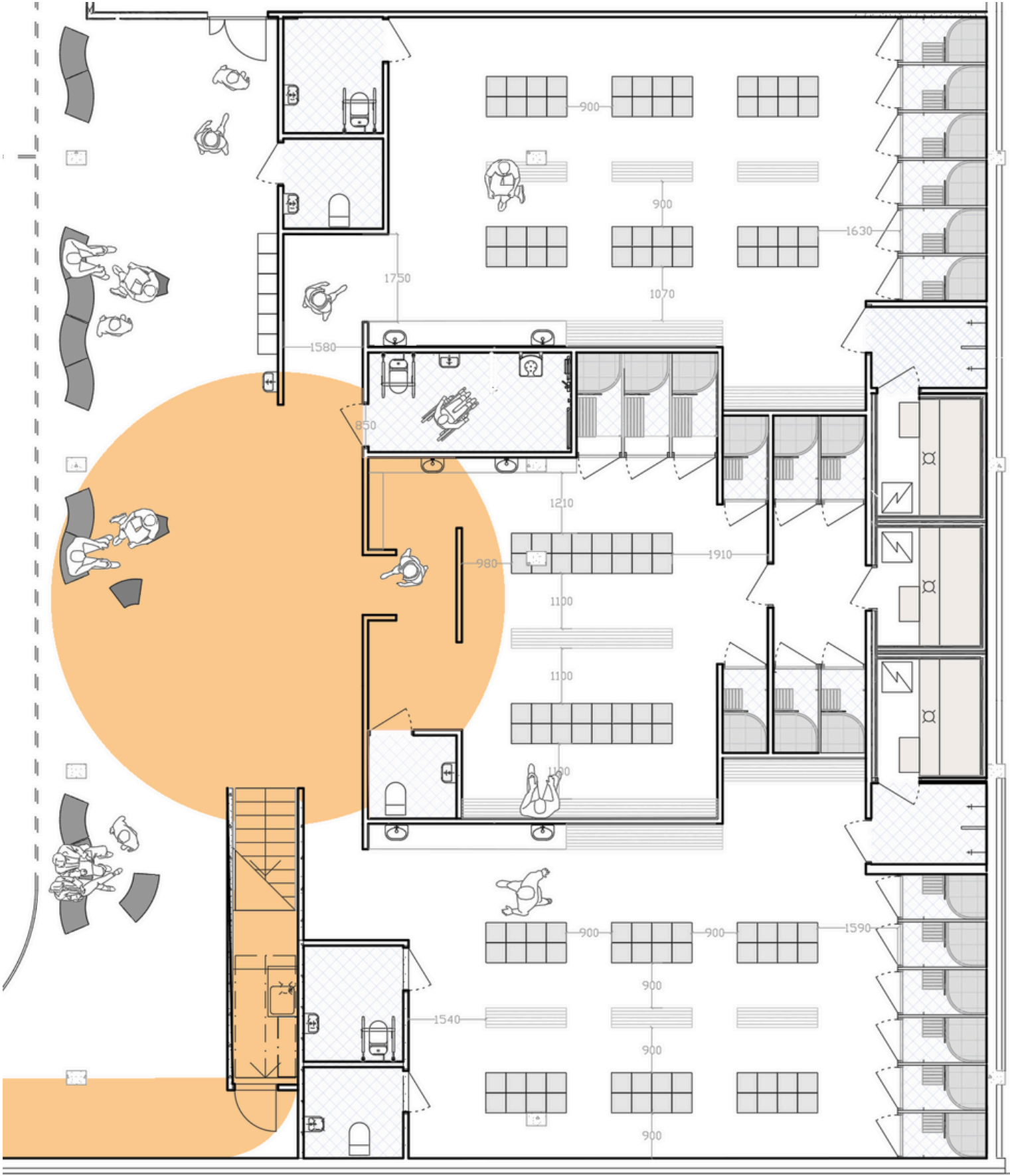
Concept

Spatial implementation



Spatial analysis

Research findings



Concept

Spatial implementation





MEN



ALL GENDER



WOMEN



Paavo Pakkanen
Qiong Wu

Course

MA Interior Architecture
SARK-E5035

Researching Space

Contact

qiong.wu@aalto.fi
paavo.pakkanen@aalto.fi

Unisport

thank you!