

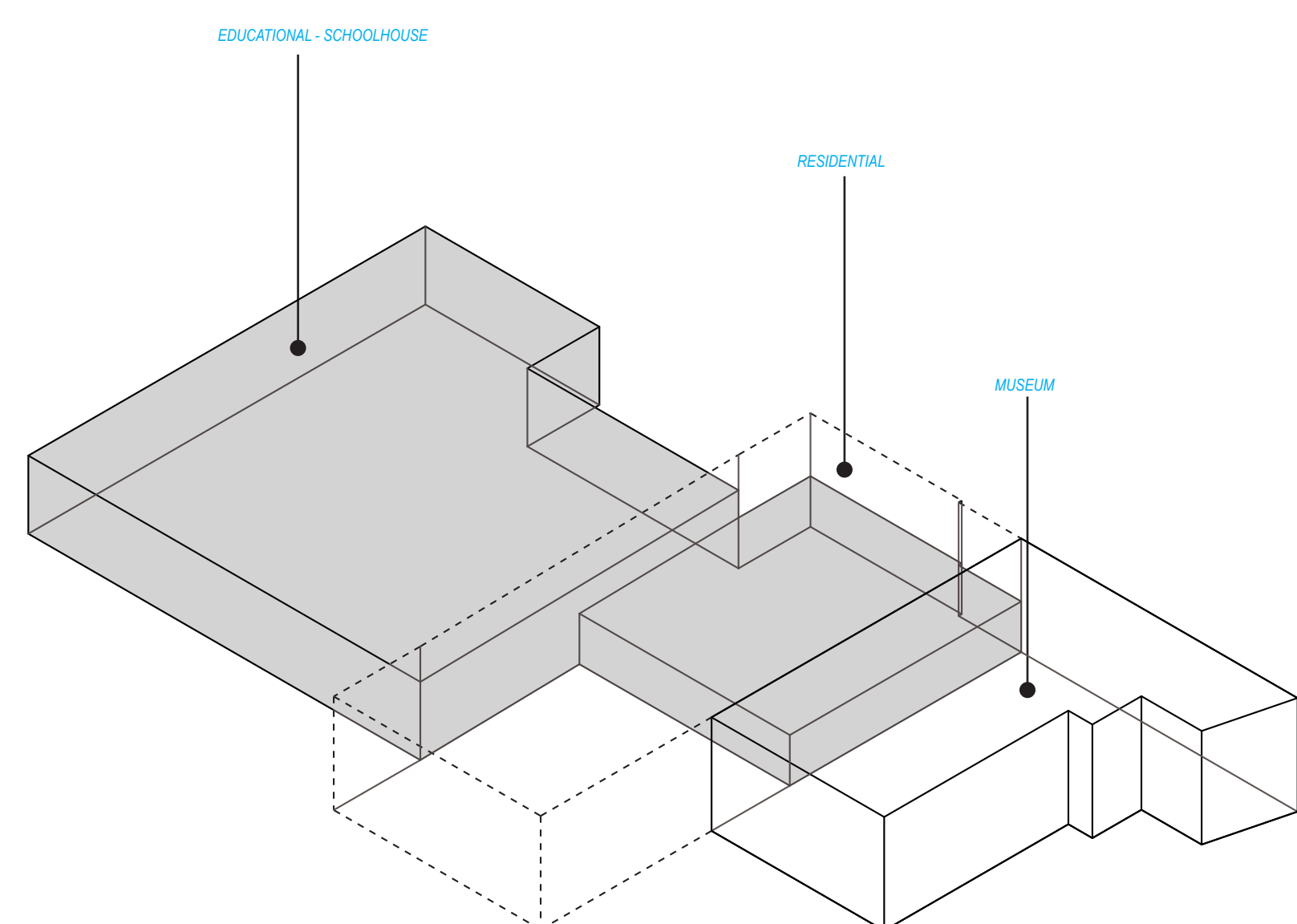
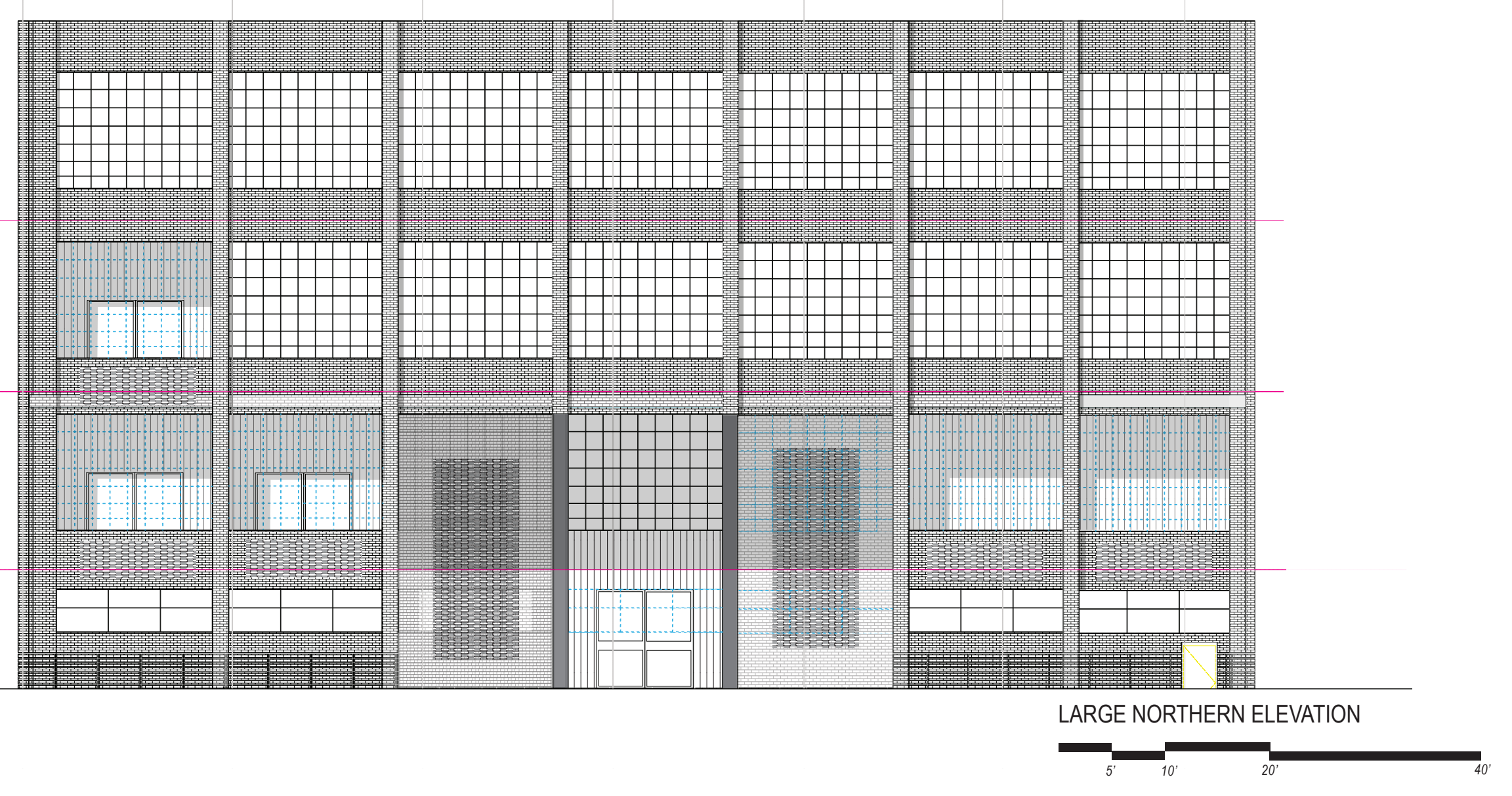
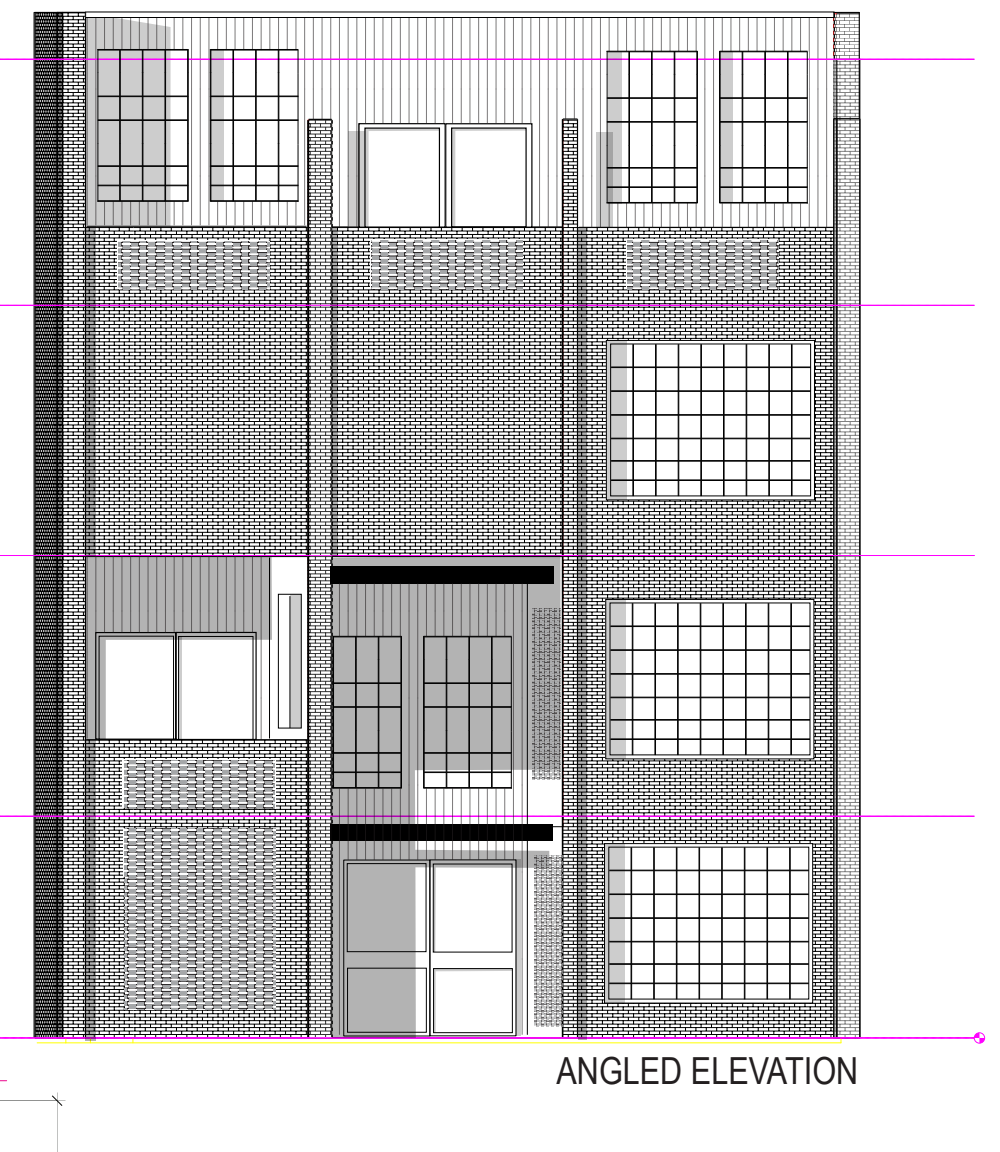
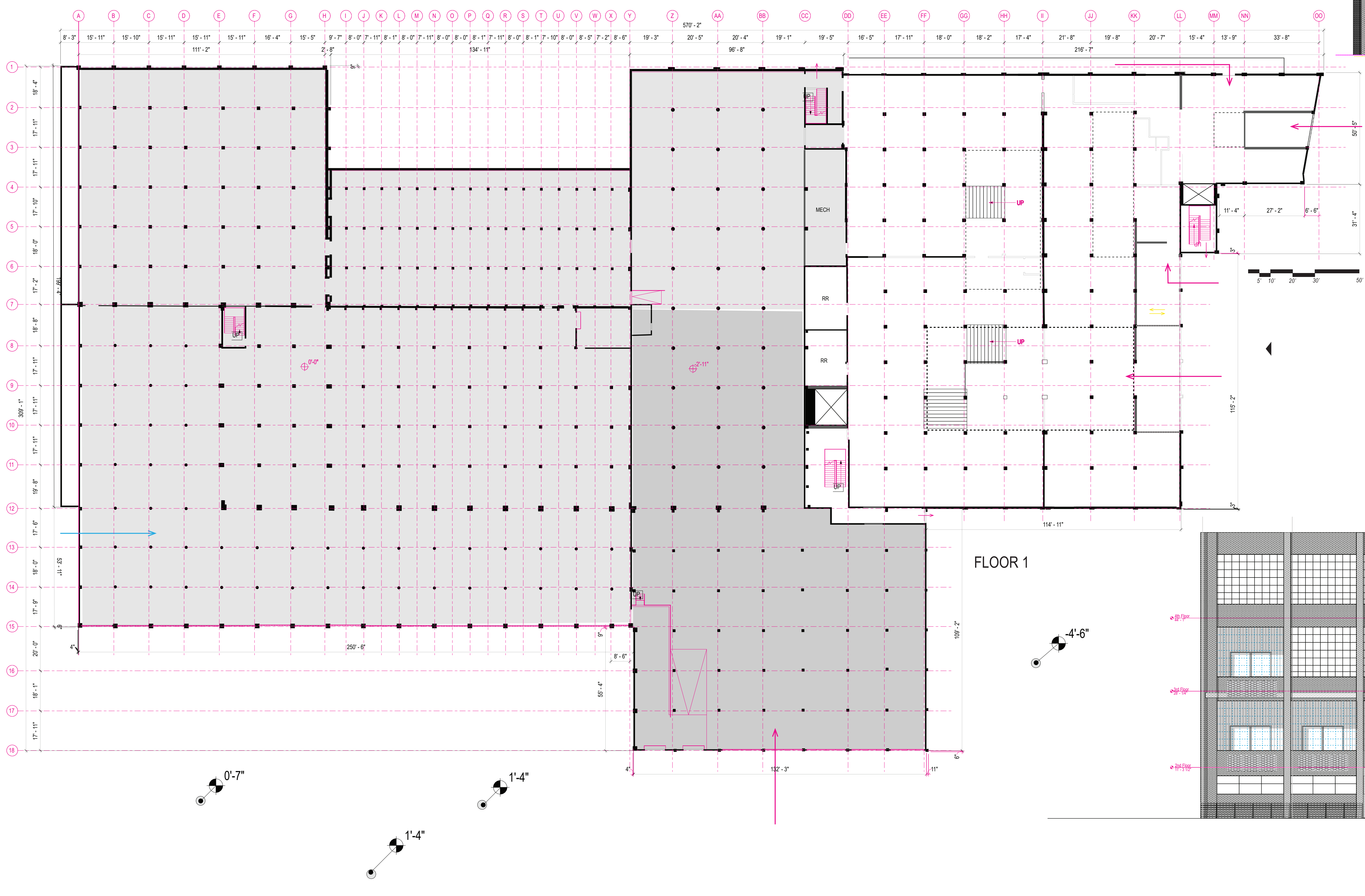
DESIGNING IN 2D

NEW + EXISTING

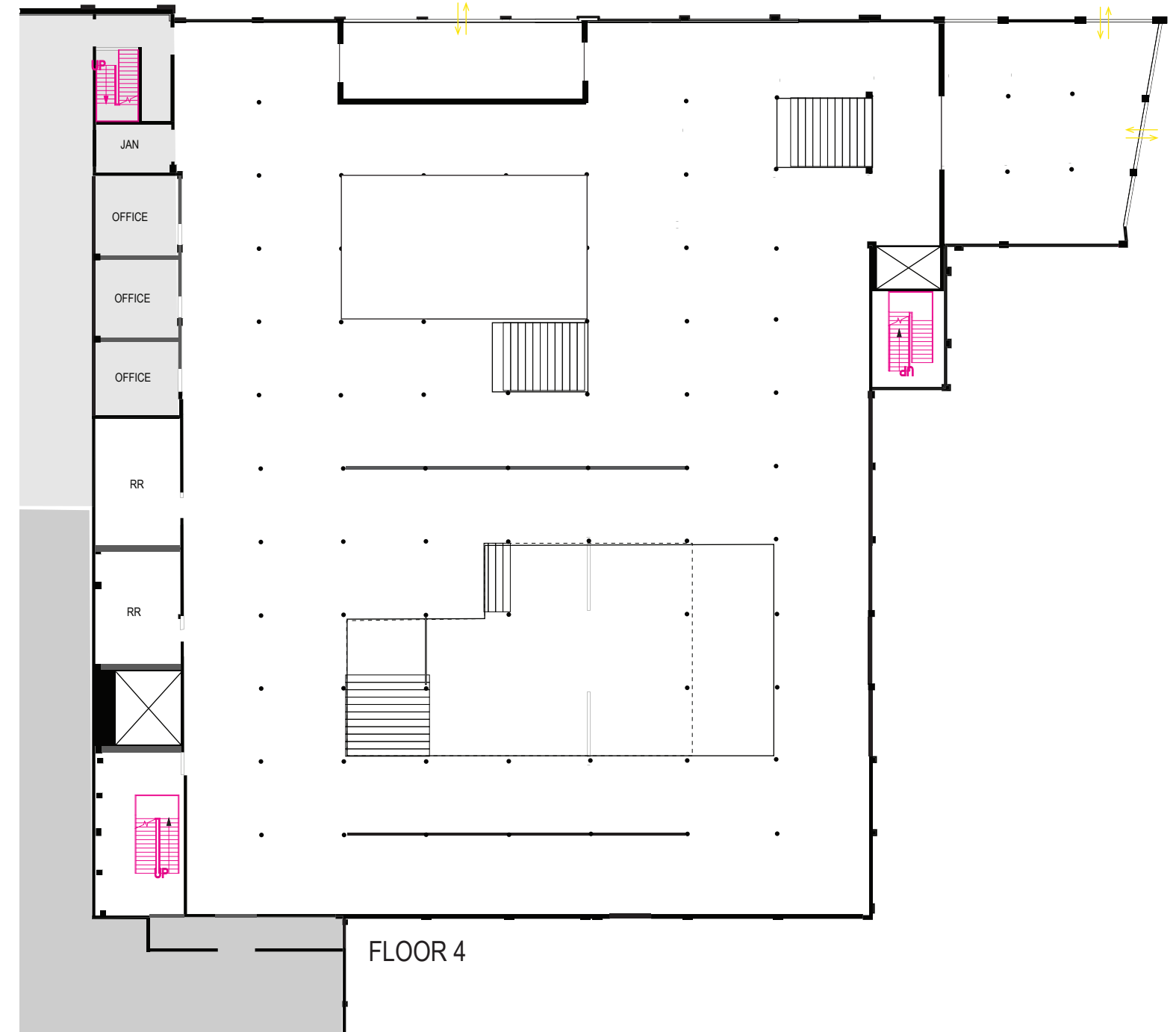
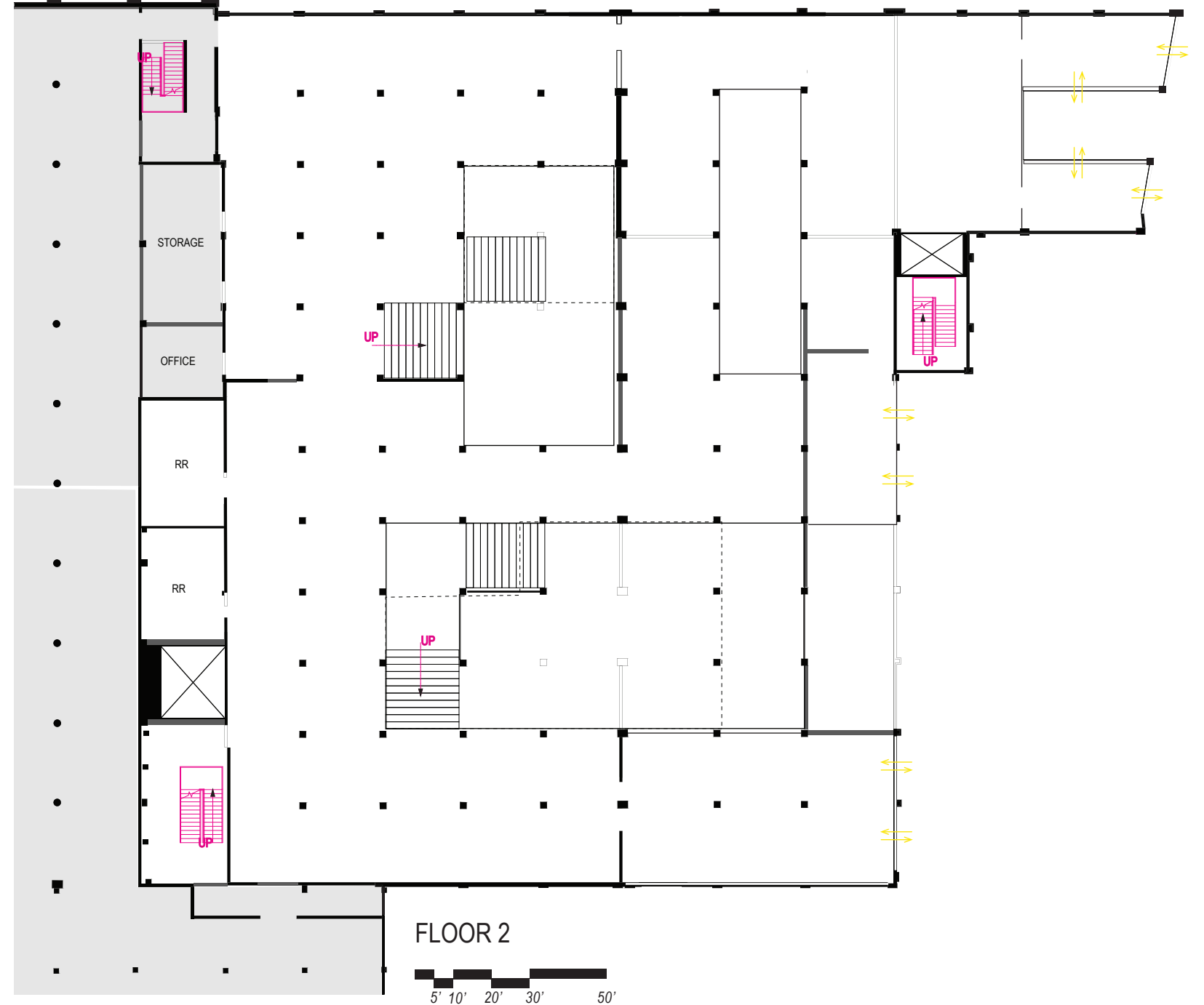
01. PROGRAM
 THE FRAGMENTS PROGRAM IS INTENDED TO BE A MUSEUM, SPECIFICALLY RELATED TO SCIENCE AND ECOLOGY, HAVING A PLACE FOR FAMILY AND CHILDREN WOULD APPEAL TO THE SURROUNDING COMMUNITY, AND ALLOW FOR FUTURE GROWTH AND INVESTMENT INTO THE COMMUNITY. THE REMAINING AREAS OF THE MILL WOULD BE PARTIALLY RESIDENTIAL AND EDUCATIONAL. A SCHOOL COULD INTERACT WELL WITH A MUSEUM. I INTEND FOR THIS CONNECTION TO PRIMARILY TAKE PLACE THROUGH THE EXTERIOR WALKWAY ON THE WEST SIDE OF THE BUILDING. ADDITIONALLY RESIDENTIAL UNITS COULD BE BENEFICIAL FOR TEACHERS OR FAMILIES LOOKING TO ATTEND.

02. PLAN
 THE FLOOR PLAN PRIMARILY CONSISTS OF ATRIUM SPACE AND OPEN AIR INTERVENTIONS. THIS HELPS INFORM THE OCCUPANTS PACE BY OFFERING MOMENTS OF MOTION AND REST. FLOOR PLATES OFFER INTERESTING MOMENTS FOR EXHIBITION SPACE WHICH CAN INCLUDE A MULTITUDE OF DISPLAY TYPES.

03. ELEVATION
 ELEVATIONS PRIMARILY SHOW SUBTRACTIONS FROM THE EXTERIOR BRICK, THOUGH THESE CAN BE FURTHER DEVELOPED. USING SOME SORT OF CONSISTENT LANGUAGE CAN INFORM THE DESIGN OF THE REMAINDER OF THE BUILDING. FOR OPEN AIR SPACES, A PERFORATED BRICK, MADE FROM RECLAIMED 5MM BRICK, CAN TELL PROSPECTORS THAT THE INTERIOR SPACE IS OPEN AIR. THIS ADDITIONALLY CREATES INTRIGUING LIGHTING CONDITIONS. TIMBER + WOOD PANELS WILL SERVE AS NEW STRUCTURAL INTERVENTIONS FOR NEEDED SPATIAL DEFINITION.



PROGRAM MASSING
 EDUCATIONAL + RESIDENTIAL



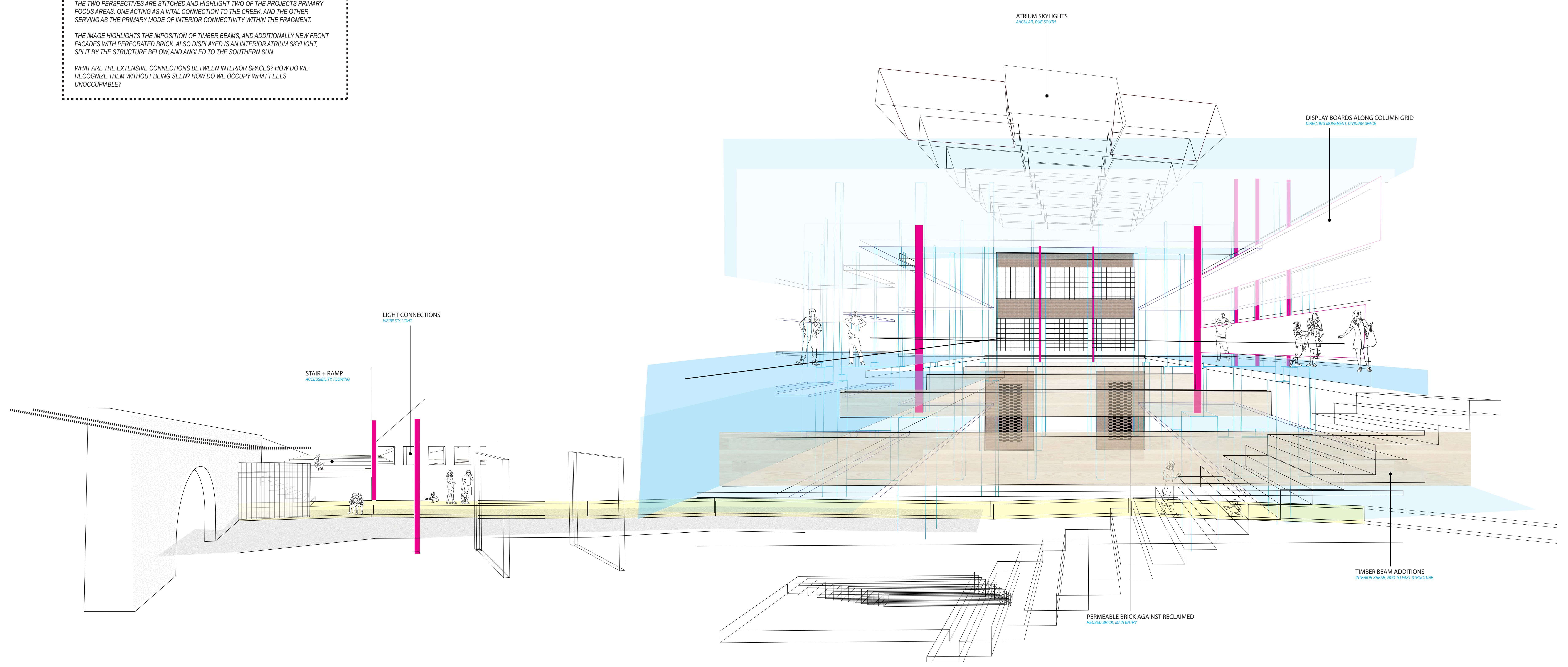
PERSPECTIVES STITCHED

NEW + EXISTING

THE TWO PERSPECTIVES ARE STITCHED AND HIGHLIGHT TWO OF THE PROJECTS PRIMARY FOCUS AREAS, ONE ACTING AS A VITAL CONNECTION TO THE CREEK, AND THE OTHER SERVING AS THE PRIMARY MODE OF INTERIOR CONNECTIVITY WITHIN THE FRAGMENT.

THE IMAGE HIGHLIGHTS THE IMPOSITION OF TIMBER BEAMS, AND ADDITIONALLY NEW FRONT FACADES WITH PERFORATED BRICK. ALSO DISPLAYED IS AN INTERIOR ATRIUM SKYLIGHT, SPLIT BY THE STRUCTURE BELOW, AND ANGLED TO THE SOUTHERN SUN.

WHAT ARE THE EXTENSIVE CONNECTIONS BETWEEN INTERIOR SPACES? HOW DO WE RECOGNIZE THEM WITHOUT BEING SEEN? HOW DO WE OCCUPY WHAT FEELS UNOCCUPABLE?



ATRIUM SKYLIGHTS

DISPLAY BOARDS ALONG COLUMN GRID

STAIR + RAMP

LIGHT CONNECTIONS

PERMEABLE BRICK AGAINST RECLAIMED

TIMBER BEAM ADDITIONS