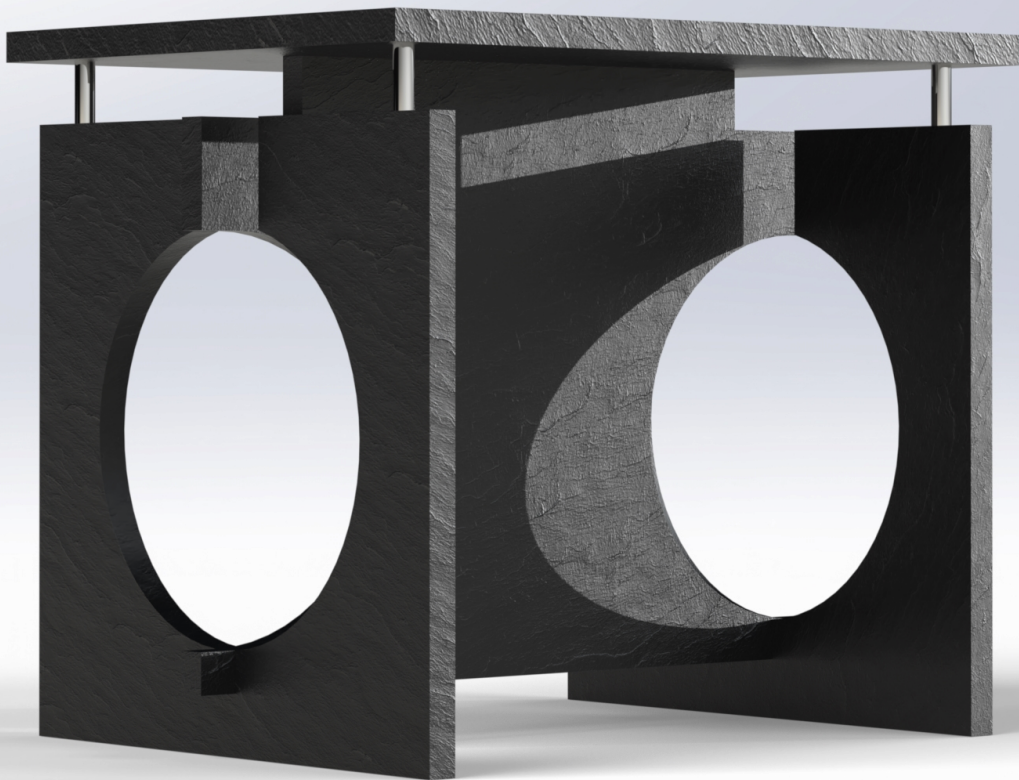


MOON GATE

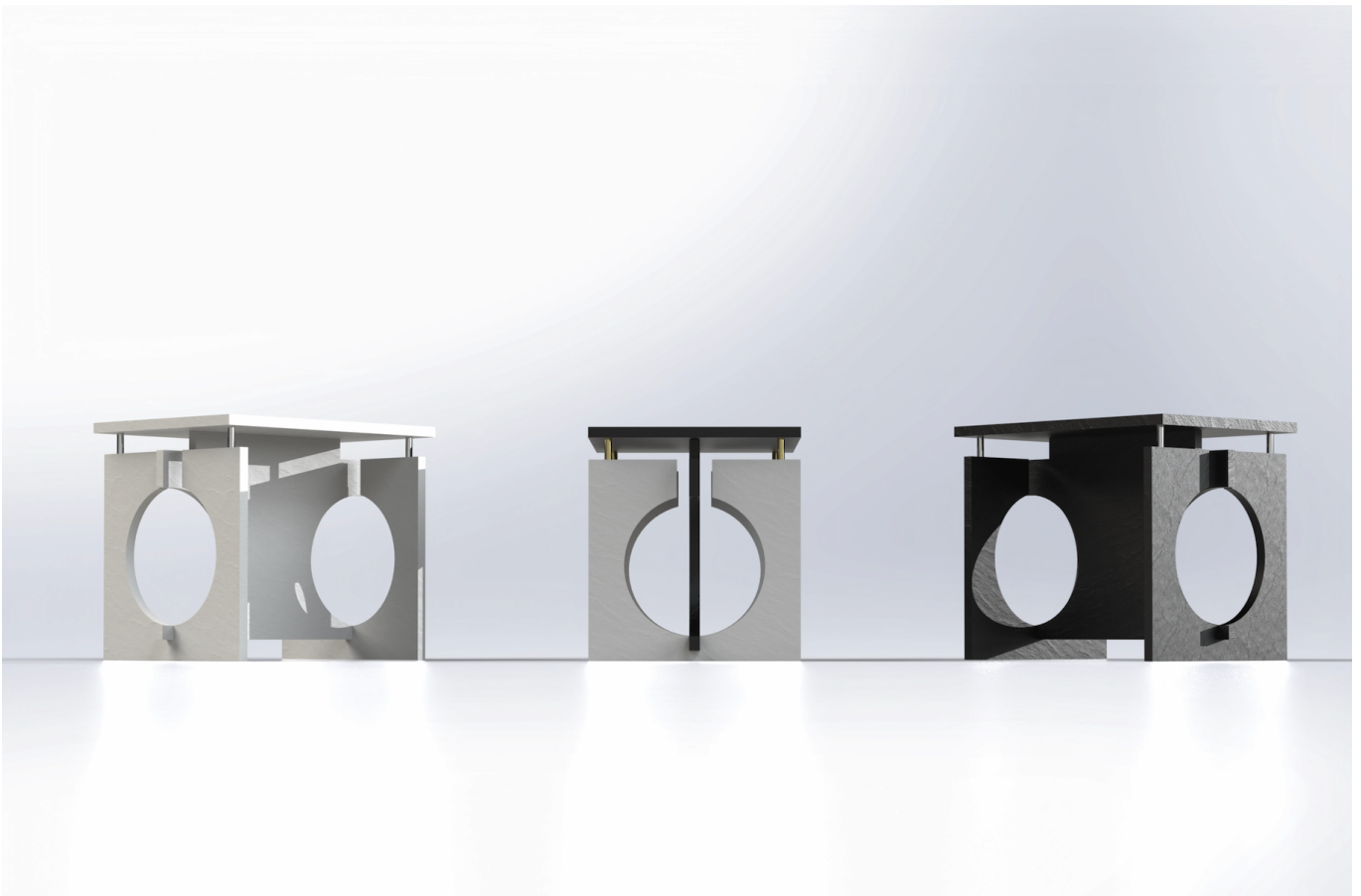
Derek Lin . Shariq Mohamed . Roxy Reiner | 2024



MOON GATE

Derek Lin . Shariq Mohamed . Roxy Reiner | 2024

The table emerges from a fusion of Brutalist architectural principles and Chinese architectural symbolism, embodying both the strong geometric forms and structural honesty of Brutalism and the symbolic significance of the moon gate as a portal between spaces. The table maintains a minimalist aesthetic while incorporating recycled plastic, symbolizing renewal and transformation. Designed to evoke a sense of wonder and otherworldliness, the table functions as both furniture and sculpture, visually expressing tension and inviting contemplation. This synthesis of visual and architectural elements results in a piece that is both elegant and conceptually rich, offering a new perspective on the possibilities of materials and design.

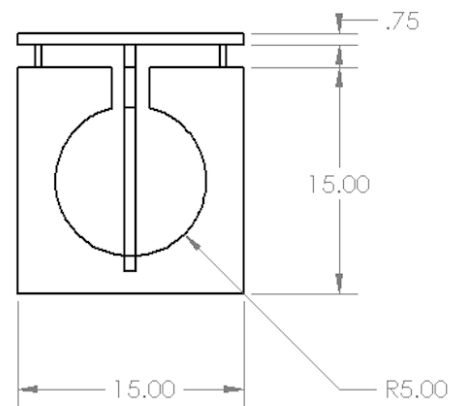
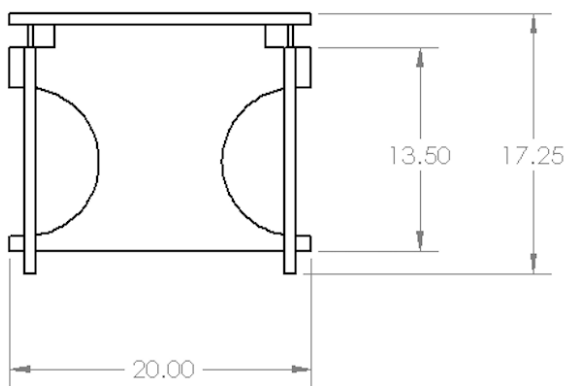
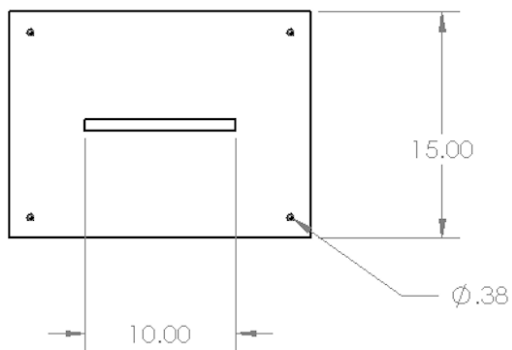


MOON GATE

Derek Lin . Shariq Mohamed . Roxy Reiner | 2024

Recycled Polypropylene sheets are available in various colours and are also interchangeable upon request. Tubular Stainless Steel dowels are available in classic chrome or gold.

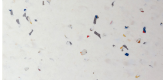
measurements taken in inches



MOON GATE

Derek Lin . Shariq Mohamed . Roxy Reiner | 2024

frame

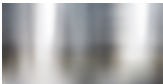


recycled polypropylene
lunar white



recycled polypropylene
eclipse black

dowel



stainless steel
chrome



stainless steel (gold plated)
gold

more customizations available upon request as per Plastic Flux inventory.

technical information: polypropylene sheets

Melting Temperatures: 175 - 200°C

Thermal Expansion: 1-3%

- Does not Stain with Turmeric
- Dishwasher safe
- Material properties similar to wood