

JUKE

JOSE

.COM

Gallery Shop

Residential

Installation

Commercial

Residential

Community Center

Two Two

Western Loft

Time Has Brought Us Together

Baggu, Haddock Studio

Work Samples, Haddock Studio

Wayfinding

Gallery-Shop

Location Oakland, CA
Date 2022
Typology Commercial
Program Gallery, Retail, Workshop
Area 900 SF
Client Two Two
Design Partial Practice
Scope Spatial design, fixture and display design, lighting design, construction documents and administration

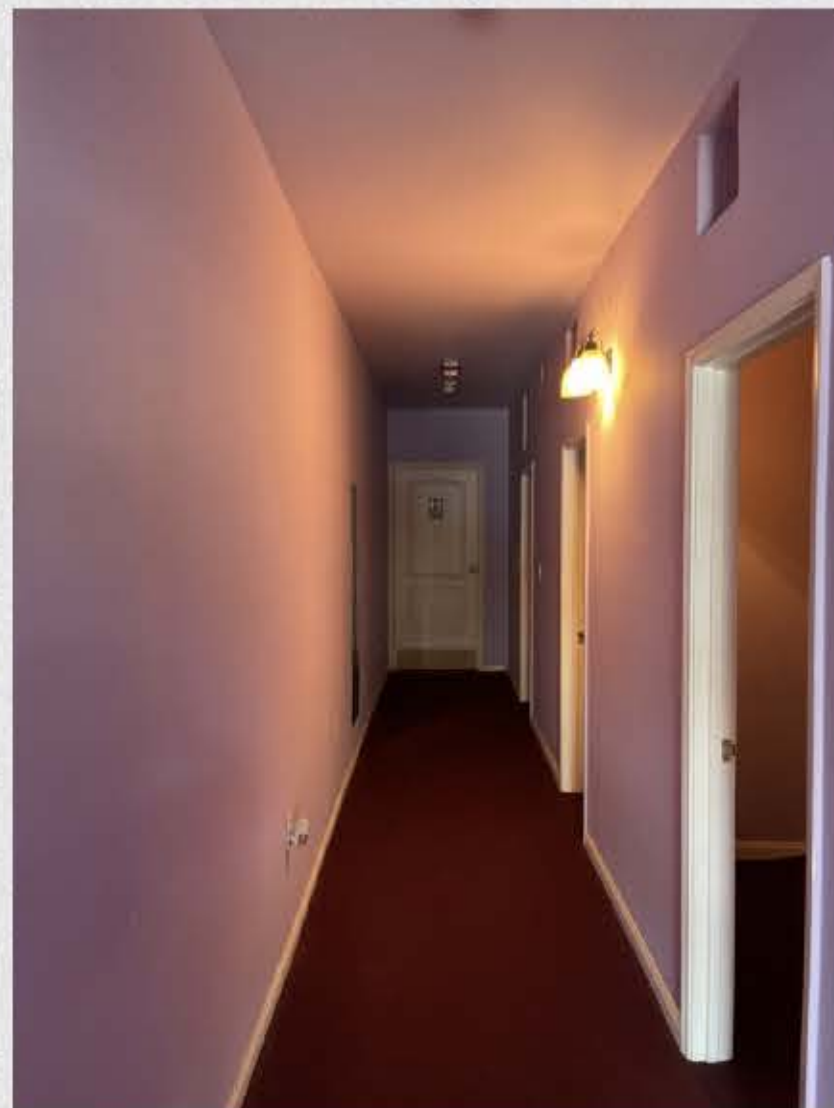
Two Two is an online shop established in 2021 with the intent of creating a conceptual space for artists and creatives to experiment. Two Two seeks to transform this digital platform to a physical space, carrying a range of function from retail, exhibitions to workshops.

The design carefully balanced budget, time, and site constraints through minimal intervention that prioritizes flexibility and adaptability while creating a memorable spatial experience through a simple yet impactful design gesture.

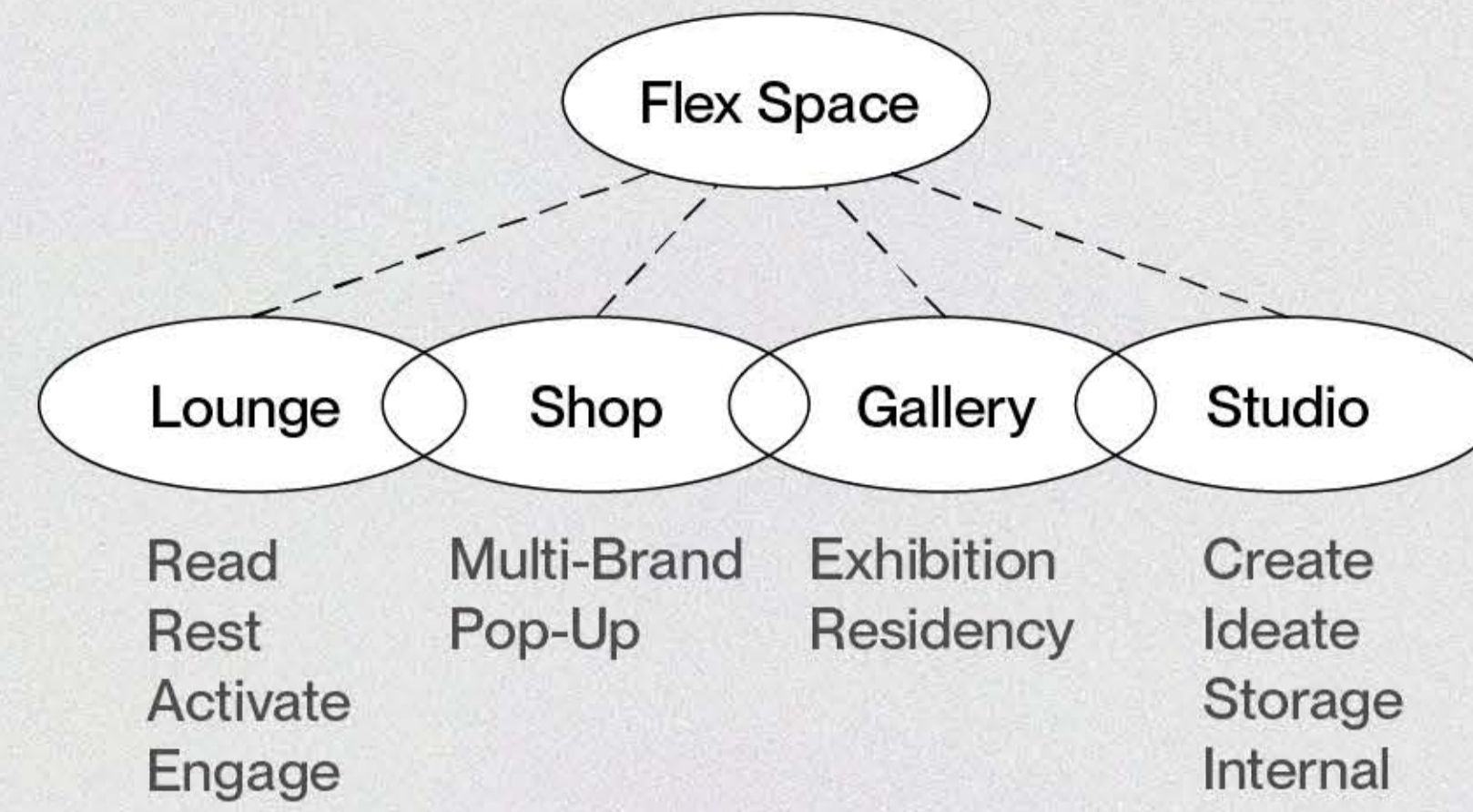
Two Two



Interior Views —



Brief —



The client presented us a brief that encompasses the key areas they want to focus on. Their vision and mission is to create a space that will cultivate creativity and be an integral fabric to the community.

The design need to be temporal and adaptable in order to accommodate their ever-changing programs in 900 SF that reflect our fast paced society.

Site —

The site was a former massage therapy studio situated along locally owned and patronized shops in Grand Lake, Oakland, CA. The existing site consist of a main room as a lounge and further, four small rooms are located on the right along the corridor leading to the back-of-house. With a small budget, we need to be conscious of our decisions of what to remove and retain. (Left)

Opt 1



Opt 2



Opt 3



Schematic Design

Different design concepts are presented and bring meaningful dialogue



Opt A



Opt B



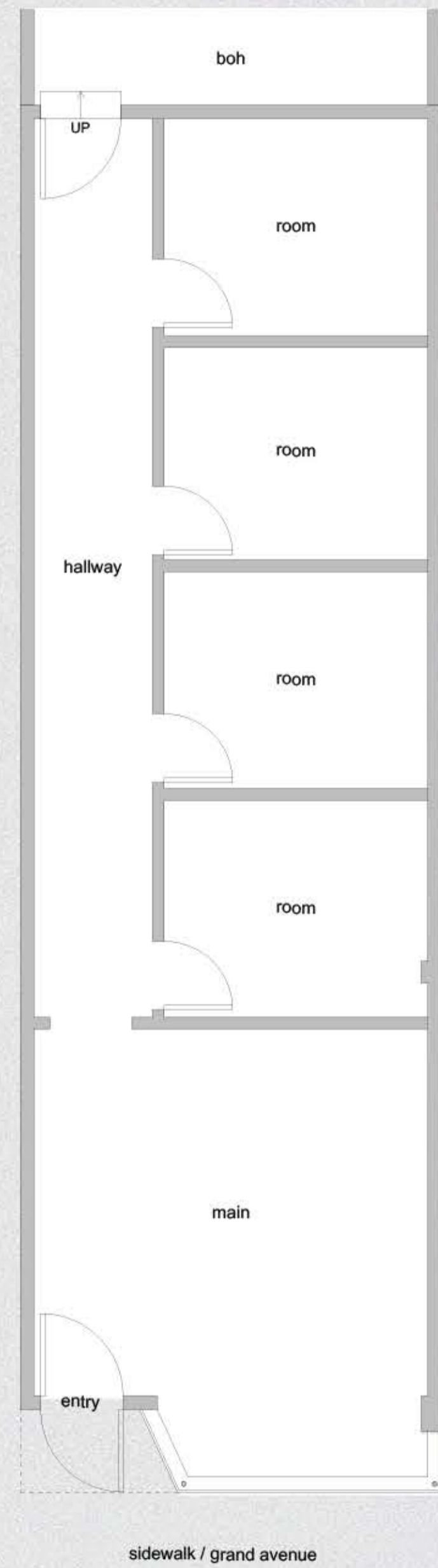
Opt C



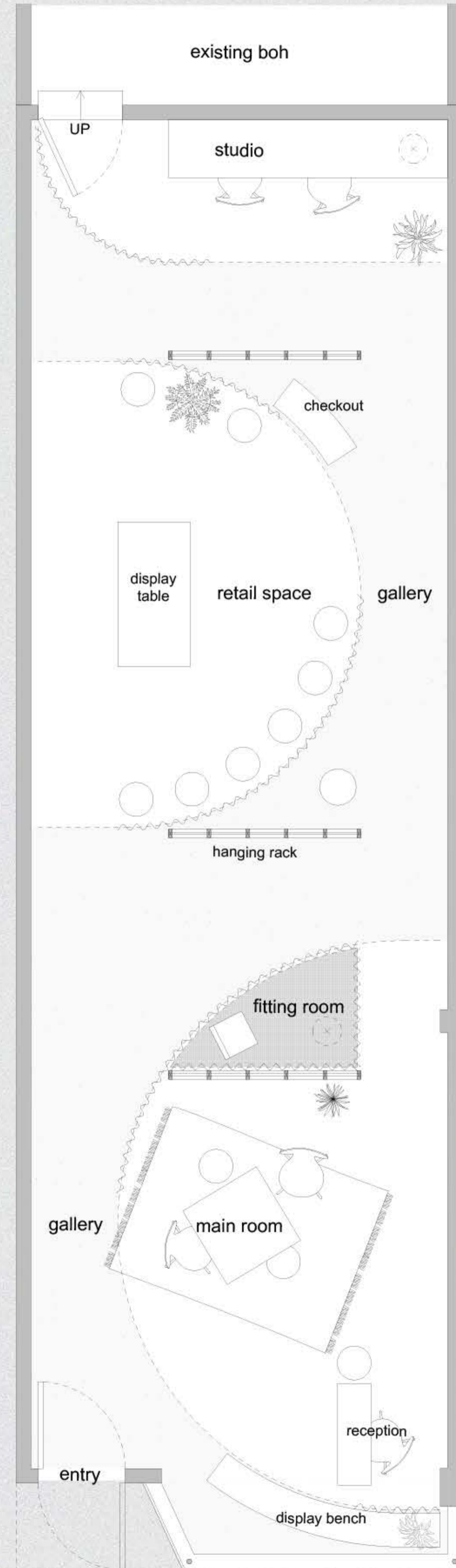
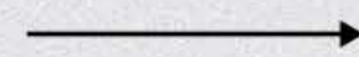
Design Development

Exploration of the design idea from Option 3 that focuses on temporality

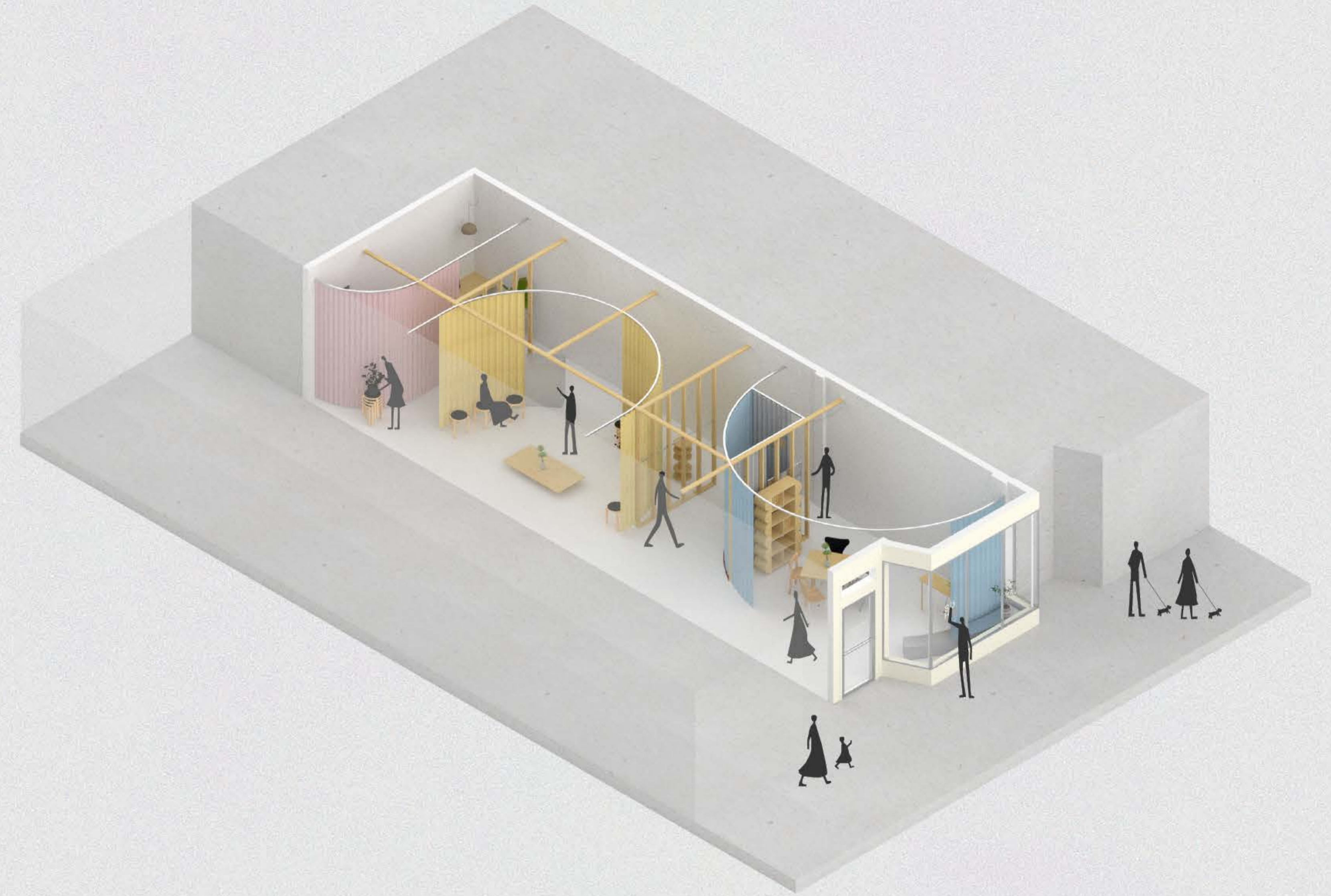
Plan —



Existing Plan



1 Floor Plan
Scale: 1/4" = 1'



Design —

The design thoughtfully kept architectural artifacts from its previous program and years of use. The remainder of the studs were abstracted commemorating the site's former rooms. The studs keep spatial stability and act as display fixtures and so forth.

The addition of sheer curtains converse to the site through softness allowing spatial ephemerality and flux. The use of fabric is integral to the design as fabric does not restrict space, yet it provides a sense of space.

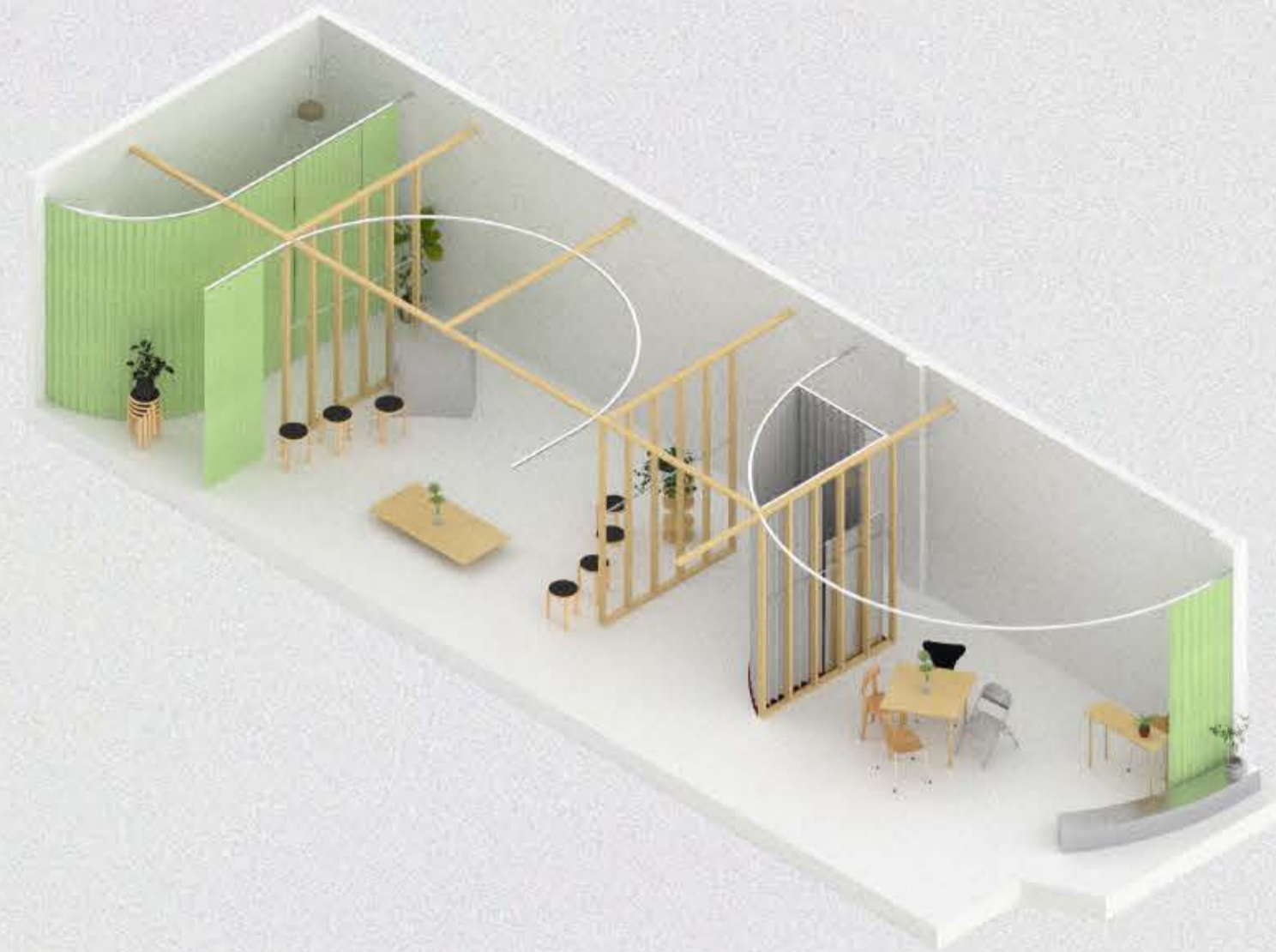
The design give the users agency to express their imagination. It encourages people to define new spaces and create new activities. Furthermore, the feeling of the space can be refreshed by changing the curtain's colors or by creating new textiles that respond to time, function, and activities.

The ground left by the spaces made through the curtains is treated as a liminal or grey space, an extension of the sidewalk and programmed to act as a gallery.

Configurations and Adaptability —



Open Design –
Set up as a singular shop or gallery, this design configuration allow for most display and sight line



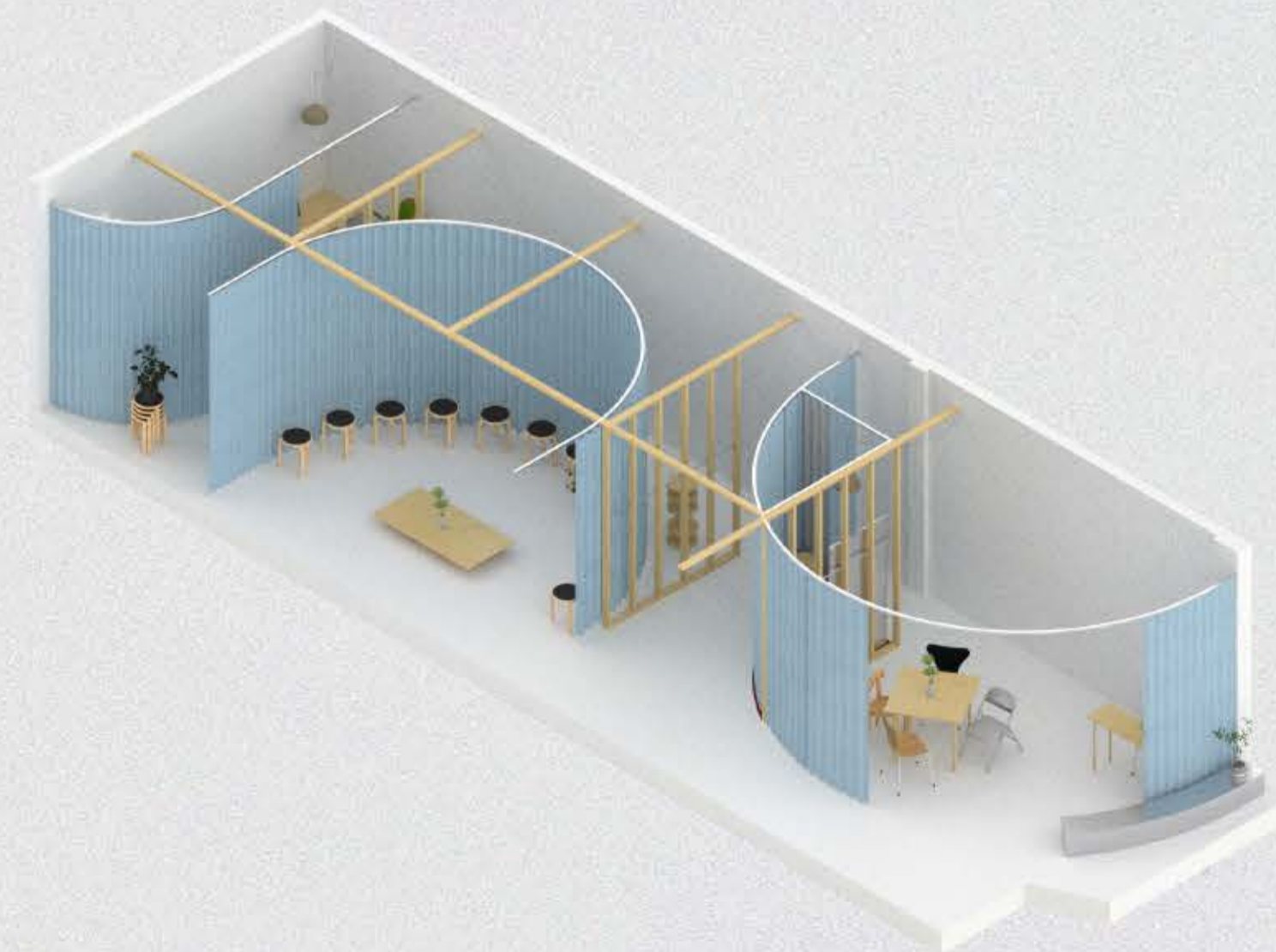
Office and Fitting Room –
Drawn curtains for the office and fitting room create a place to do administrative work or hide stock and allow visitors to try on clothing items



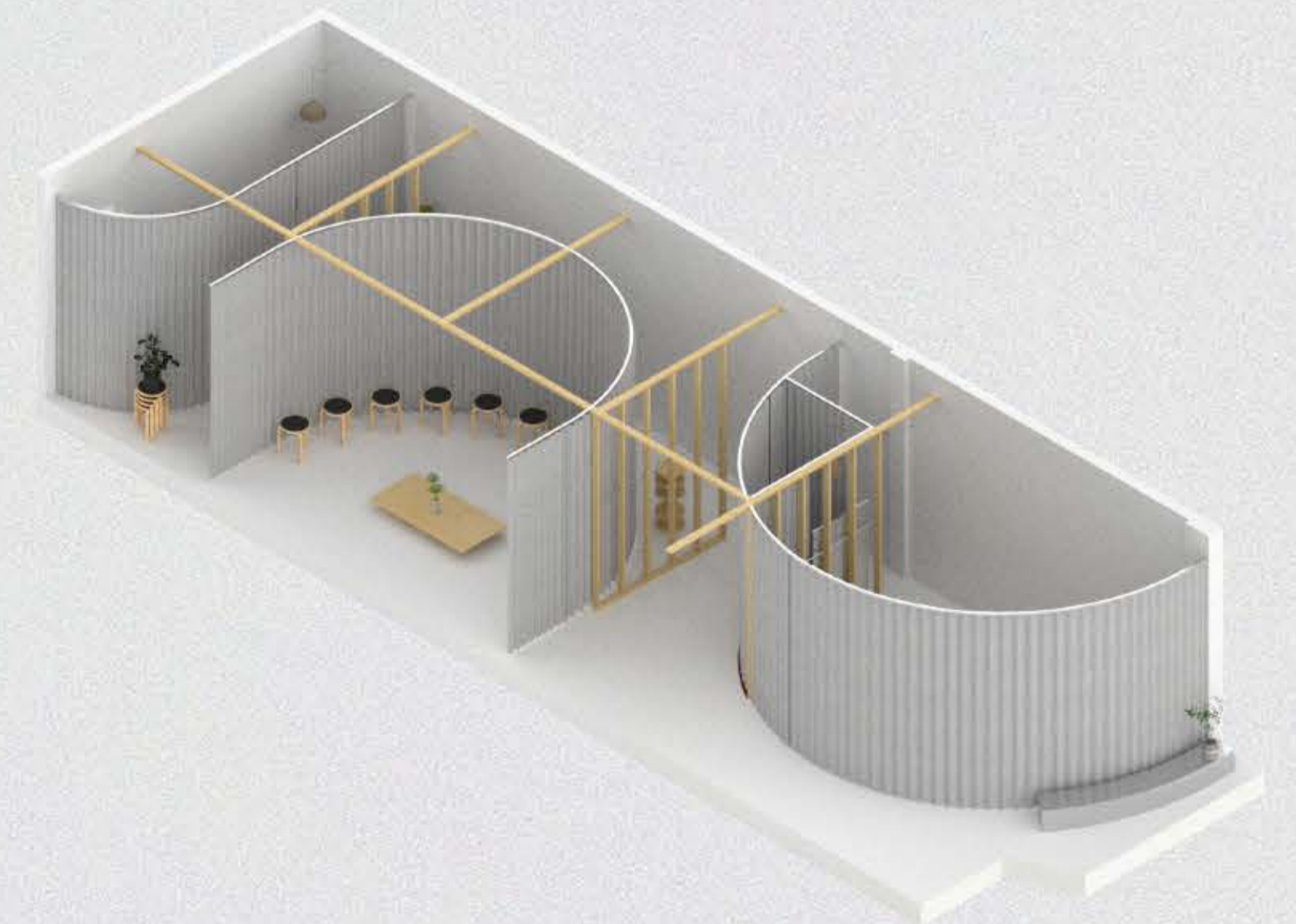
Meandering Design –
The space is subtly divided by curtains and create a spatial and memorable experience for visitors



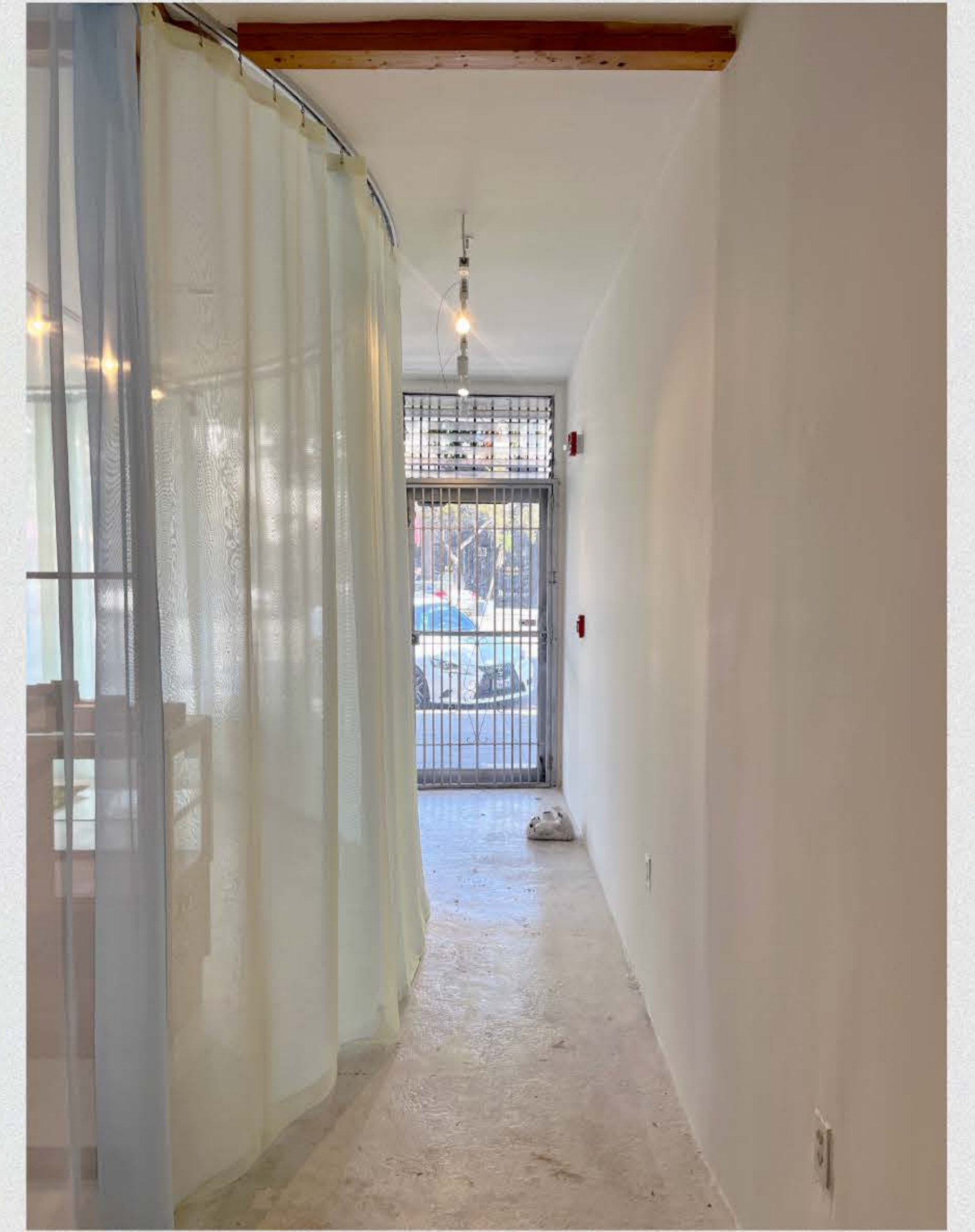
Open and Private –
A space for the shop or exhibition is set in the back while having an inviting front for community gatherings



Two Activities –
A simultaneous activity where the front and rear space is occupied for 2 events



Closed –
All the curtains are drawn and hide the displays creating privacy without completely blocking the front window creating a sense of intrigue



Construction —

In order to keep the project's cost down, the process of construction required close collaboration between the clients and contractors.

Materials and parts of the previous space are kept and repurposed as fixtures and display tables. The existing carpet flooring are removed while the concrete floor beneath is sanded and finished off with sheer white epoxy allow parts of the floor to be translucent. Tracks are custom designed and manufactured ensuring fit. Sheer curtains are commissioned as initial curtain textiles as they permit breathability and translucent openness. (Left)

Spatial Experience —

The design flexibility and adaptability create new visual and spatial feeling that can be changed instantaneously. Ultimately, it allows users to maximize their design input with minimal effort and express new ideas through architecture. (Right)



Space Within Space —

Through minimal intervention, the design gesture creates a memorable spatial experience by creating alternative dimensions, a space within a space, responding to our contemporary way of life.

Residential

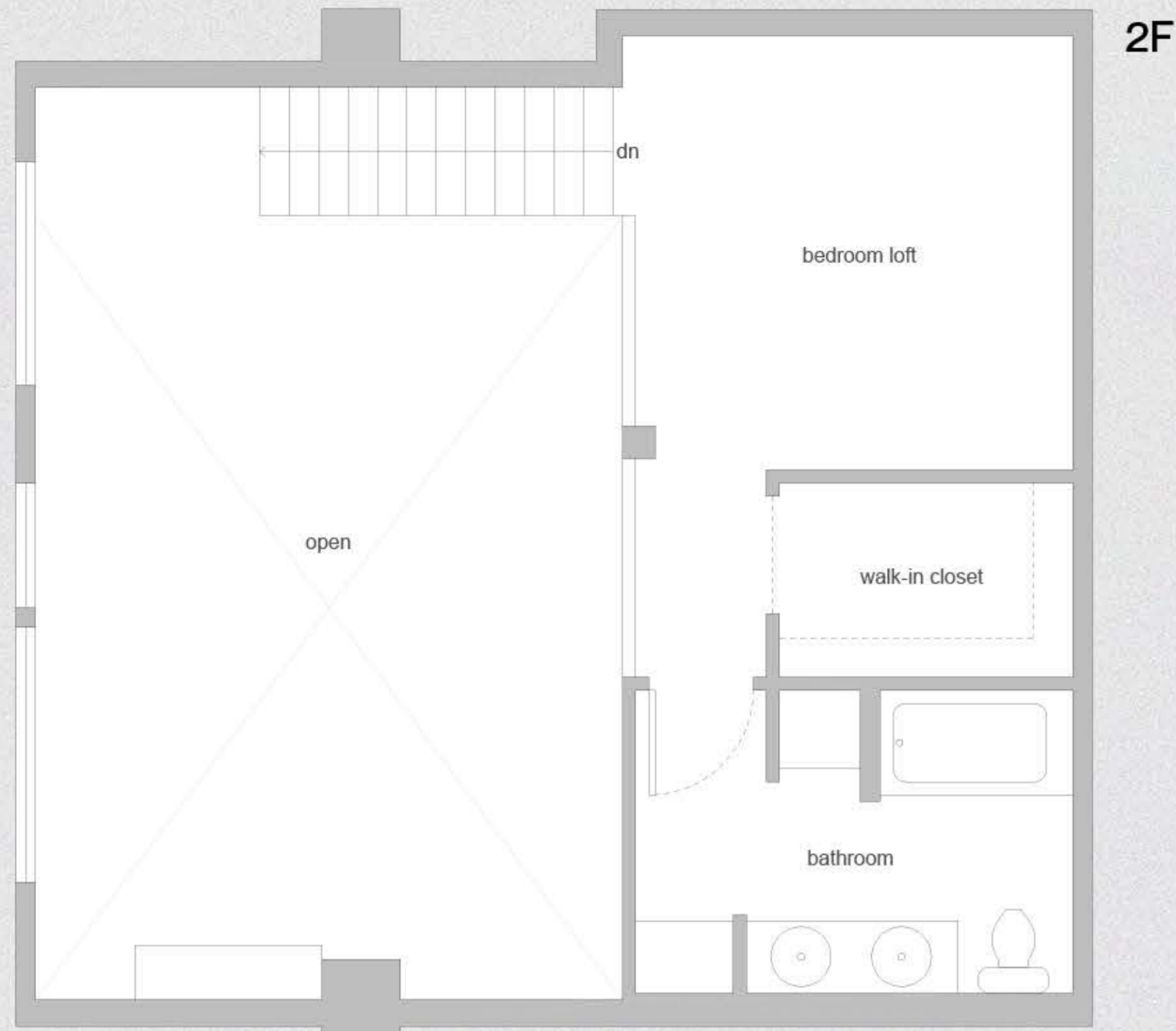
Western Loft

Location	Seattle, WA
Date	2023 – Ongoing
Status	Permit
Typology	Residential
Program	Live, Work, Entertain
Area	1000+ SF
Client	Private
Design	Partial Practice
Scope	Spatial design, fixture / furniture design

A private client located in Seattle, Washington seeks to renovate their loft to accommodate their fast-paced lifestyle. The client wants to turn the loft into an entertaining, working, and living space in addition to being a home. The brief led us to an indoor-outdoor concept within the constraints of the loft, therefore an indoor-indoor concept.



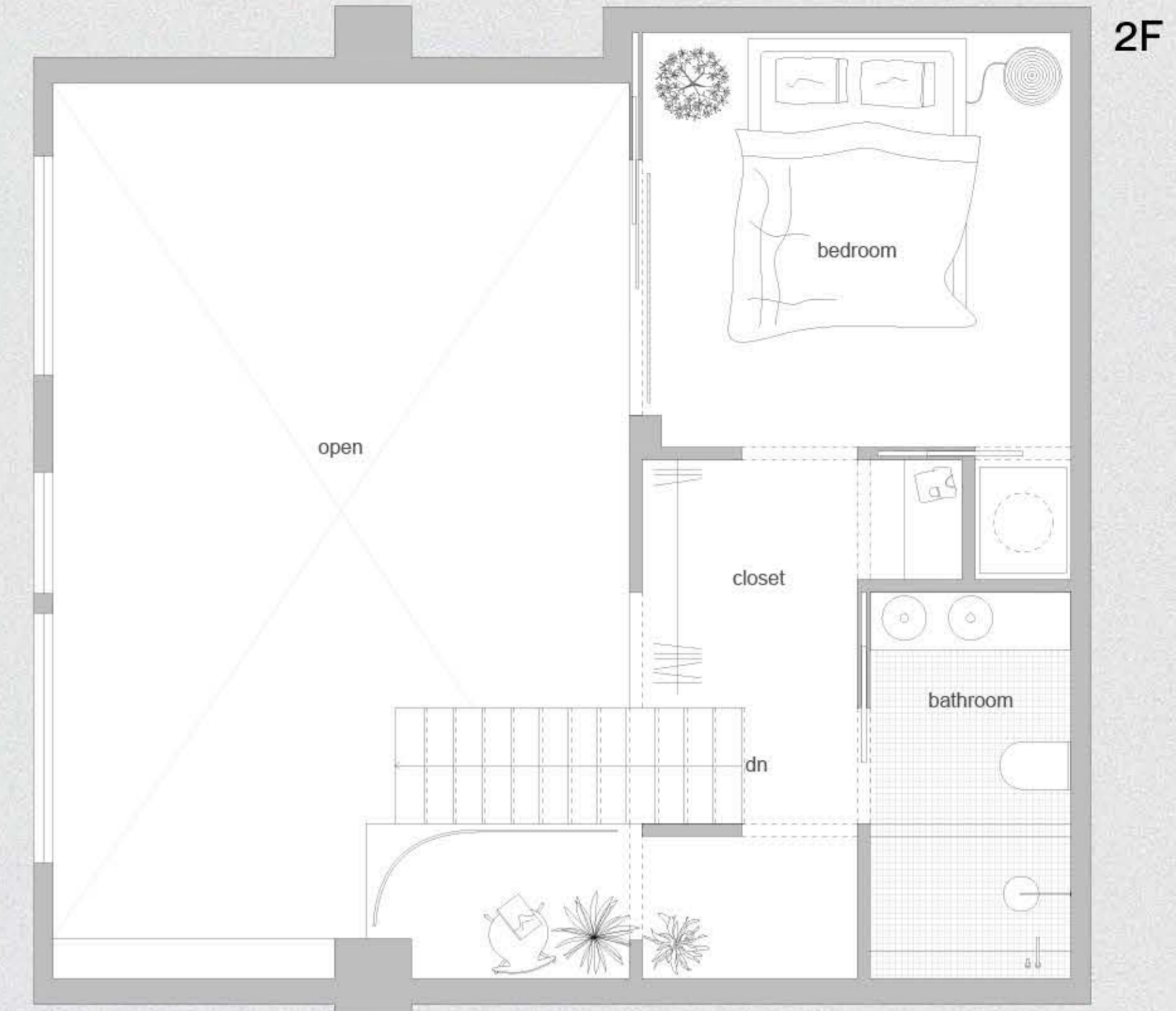
View from Kitchen —



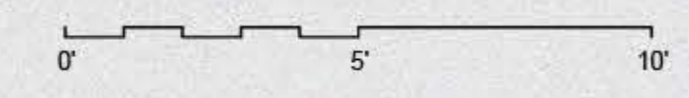
Concept —

The client intends to make their loft a multi-use space that can be used for entertaining, working, meetings, and give space for friends to stay over when visiting the city. Ultimately, the client wants to create a sanctuary to share and cultivate with friends and family.

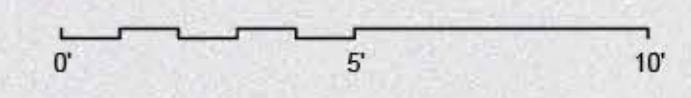
After understanding the client's needs and wants, we proposed an "indoor-indoor" concept derived from the "indoor-outdoor" idea. A concept that accentuates the domestic life where every space is appropriate that creates an intimate feeling. Each space is separated yet together. The idea is to create an interconnected space that is able to provide privacy and connection at the same time.



Existing Plan



Design Proposal



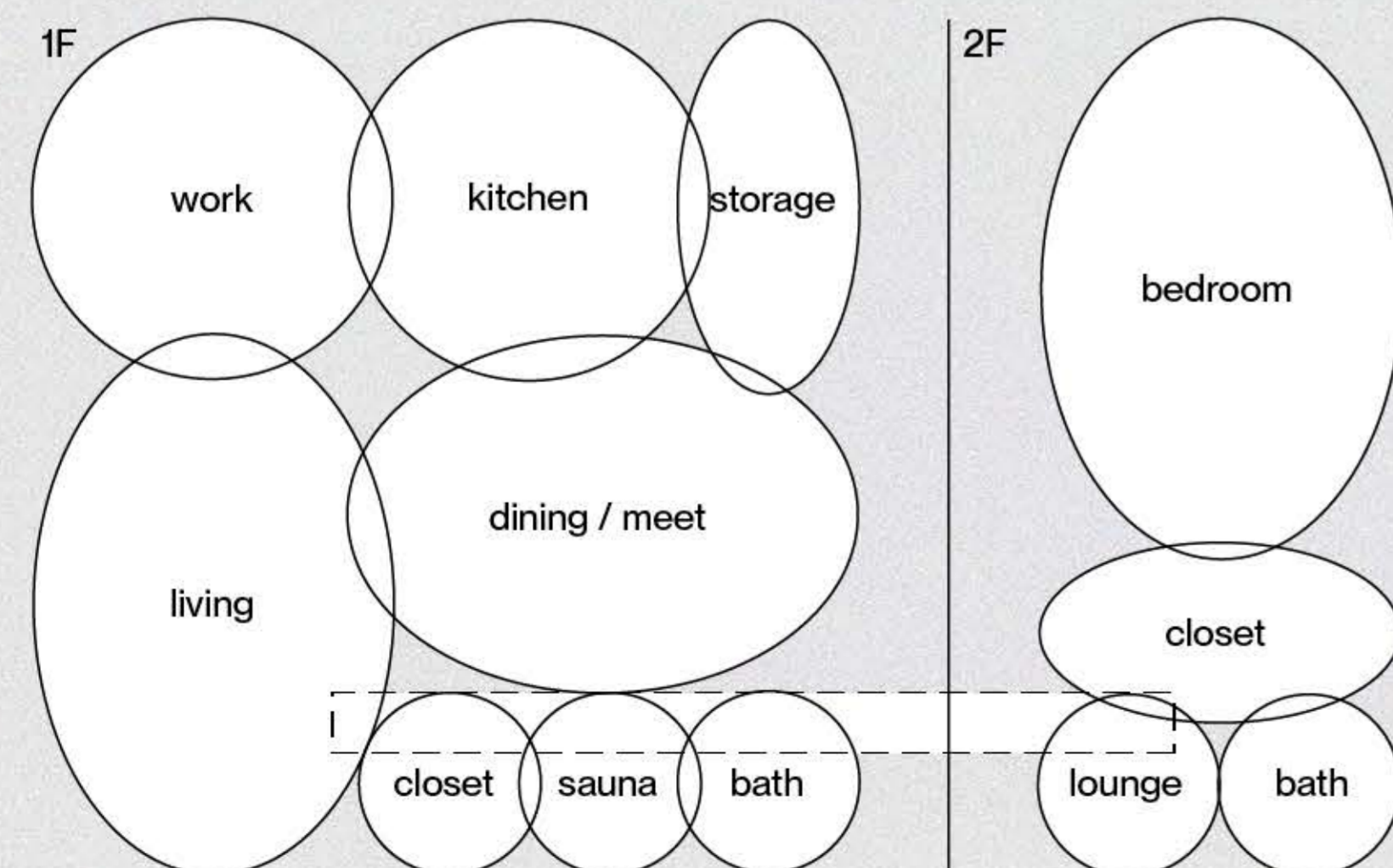
Design —

The existing layout of the apartment is a typical loft found around the US. A plain open space that serves as a living, dining, and working. We want to change this and create a space that values domestic intimacy and comfortability.

The programs are given an amount of space that the client preferred which are then divided into different boxes. The walls created by the boxes are punctured in different sizes that correspond to its adjacent programs. By adding wall space, the client is able to hang artworks they collected throughout the years and creates a feeling of expansion. The idea is to form an illusion that the space is greater than it is by not seeing the perimeter walls.

The spaces are designed to be a procession of privacy from meeting / dining space to living space to a private second level.

Layout Diagram —

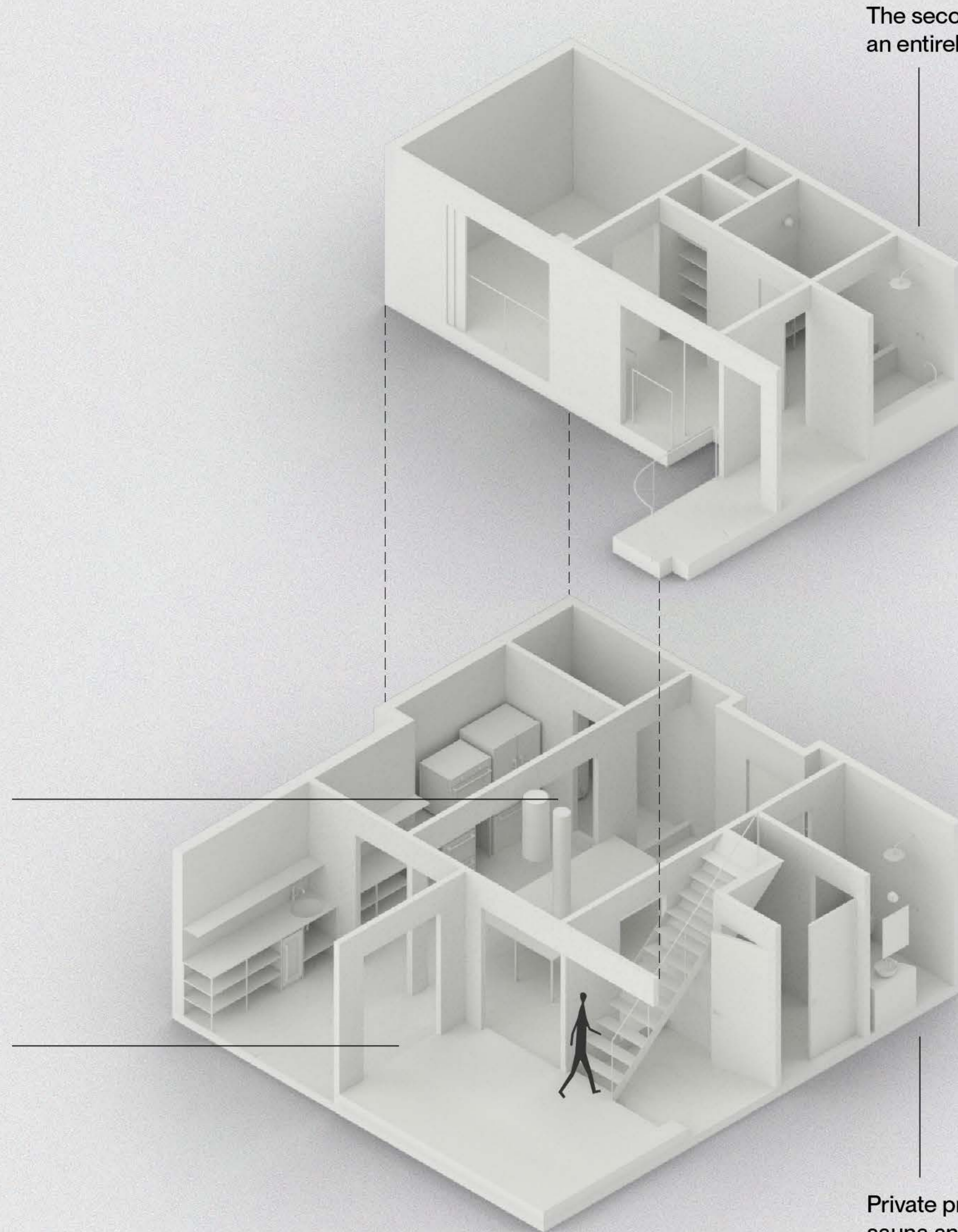


Front door opens to main space and leads to more intimate spaces

Openings keep the spaces open and interconnected

The second level becomes an entirely private space

Private programs such as sauna and bath are hidden from view





Interconnected Spaces —

The dining and meeting table became the heart of the space meeting the brief of bringing people together. The main space leads to different areas of the apartment that allow apertures of privacy and distinction of spaces.

The kitchen is adjacent to the meeting space allowing conversation to happen when the client and their friends are around like a chef's table.

The work area is combined with the bar counter becoming an extension for entertaining and meeting space.



Intimacy in Domesticity —

The living space is elevated by a step and is covered in warm wood to create a sense of intimacy. The living space leads to the stairs that opens to a closet, a bathroom, and bedroom becoming its own private level.

Through considered design, we are able to create privacy that is able to transform itself and become an open and expansive space.

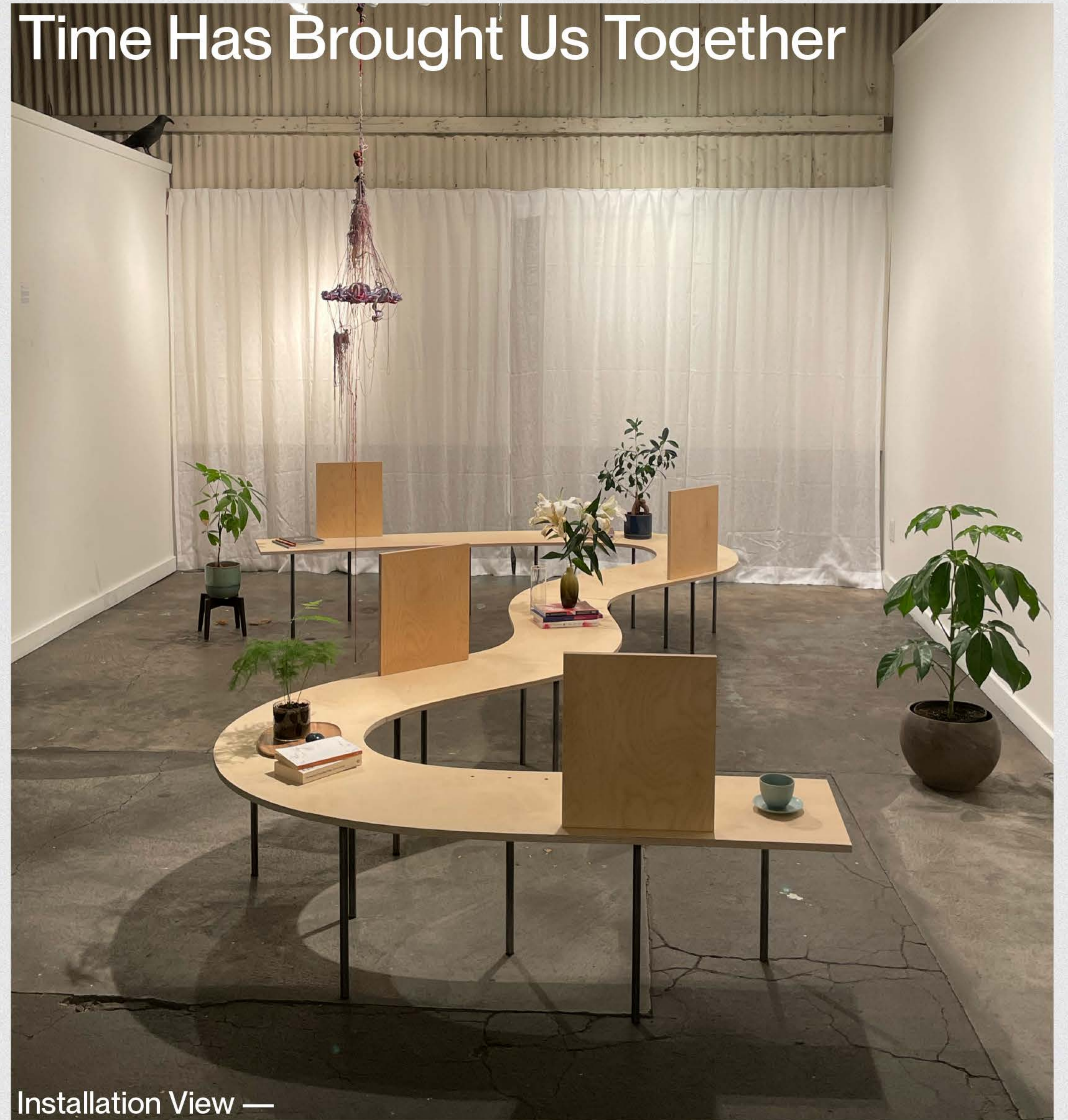
Installation

Date 2021
Typology Installation
Exhibition 2023, Dreaming People's History, San Francisco Public Library Main Branch
2022, A Between, Root Division, San Francisco, CA
2021, APAture Embrace, Kearny Street Workshop, San Francisco, CA

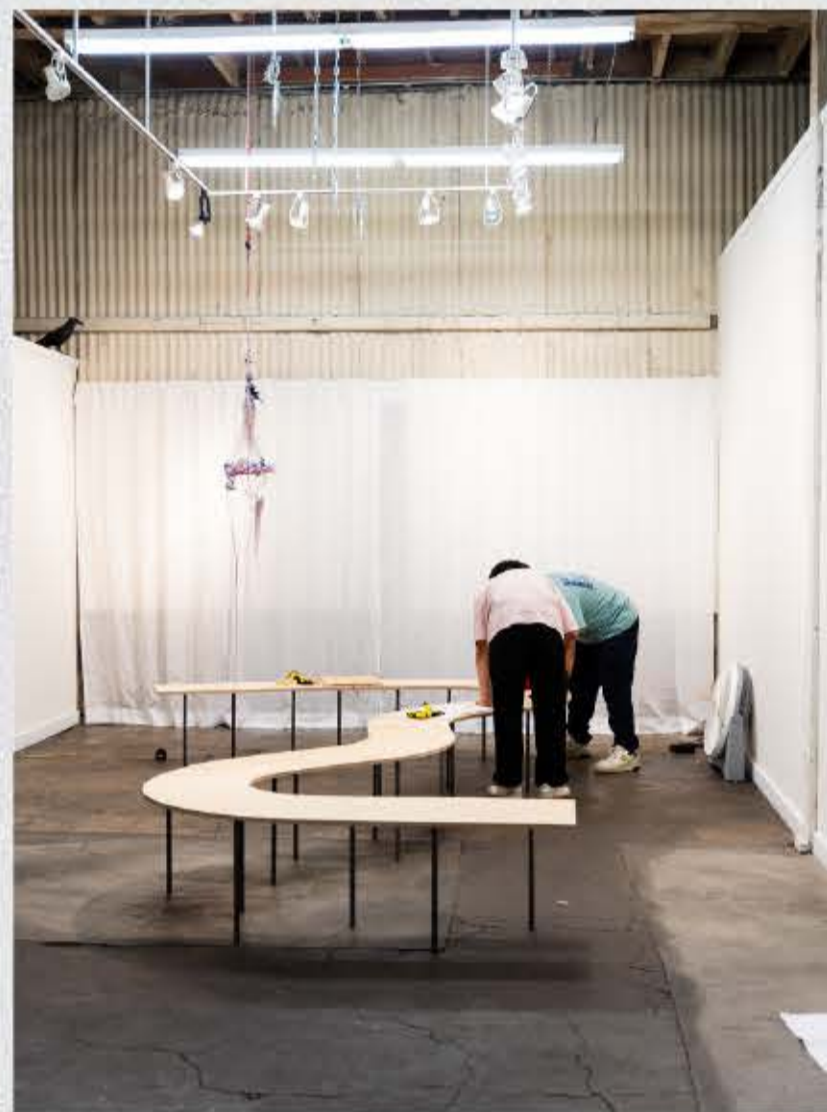
A chair is a piece of furniture that lies on the mundane part of our everyday life. It's a piece that bears our spirits and has become an embodiment of our interconnected beings. Whether we are at our family's dining table, a doctor's waiting room, or sitting on a bus with strangers, chairs carry us. To be a chair is to be marginal, but they are witnesses of our relationships, personal histories, worries, and fleeting moments. It is within these moments that time has brought us together.



Time Has Brought Us Together

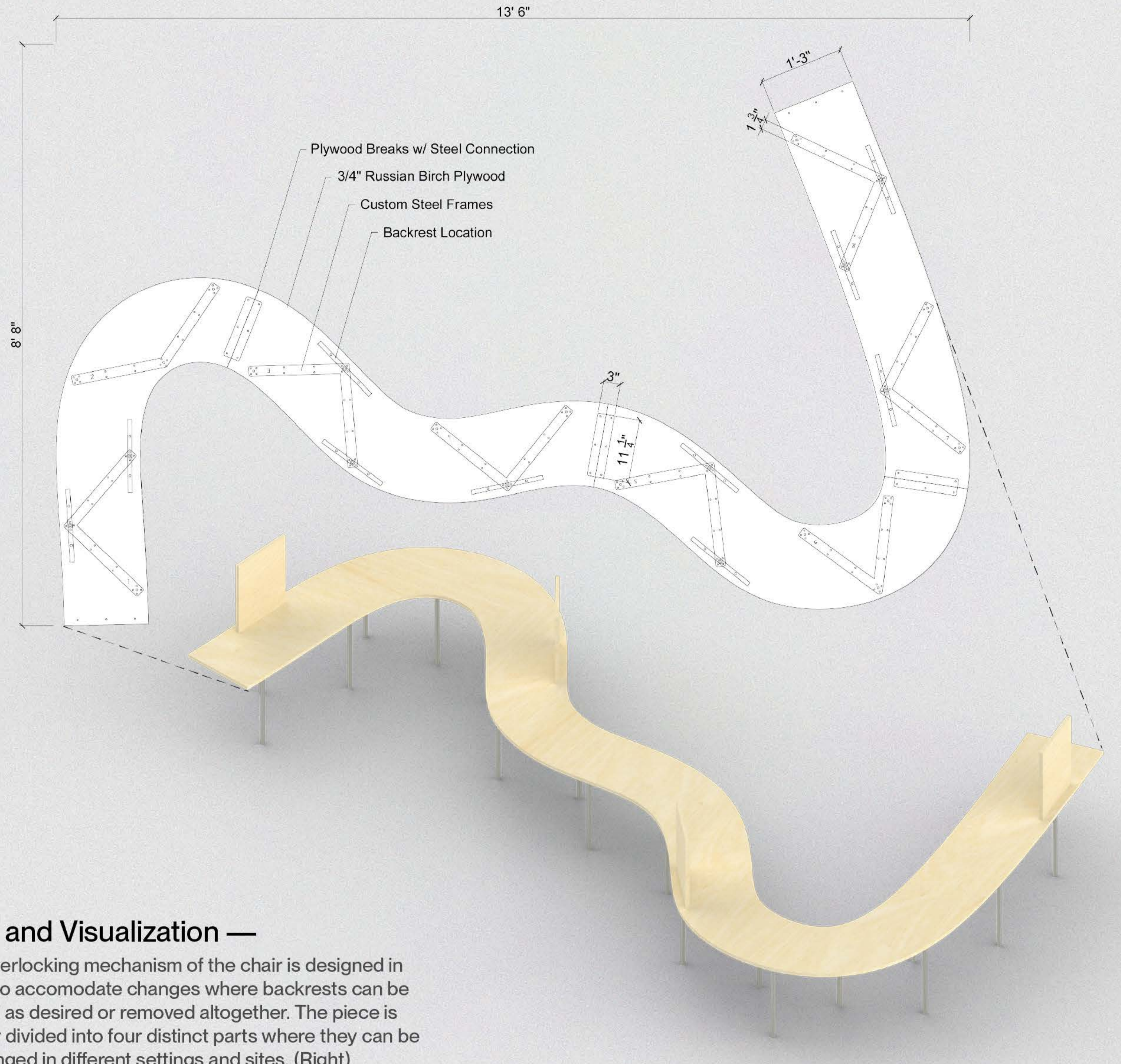


Installation View —



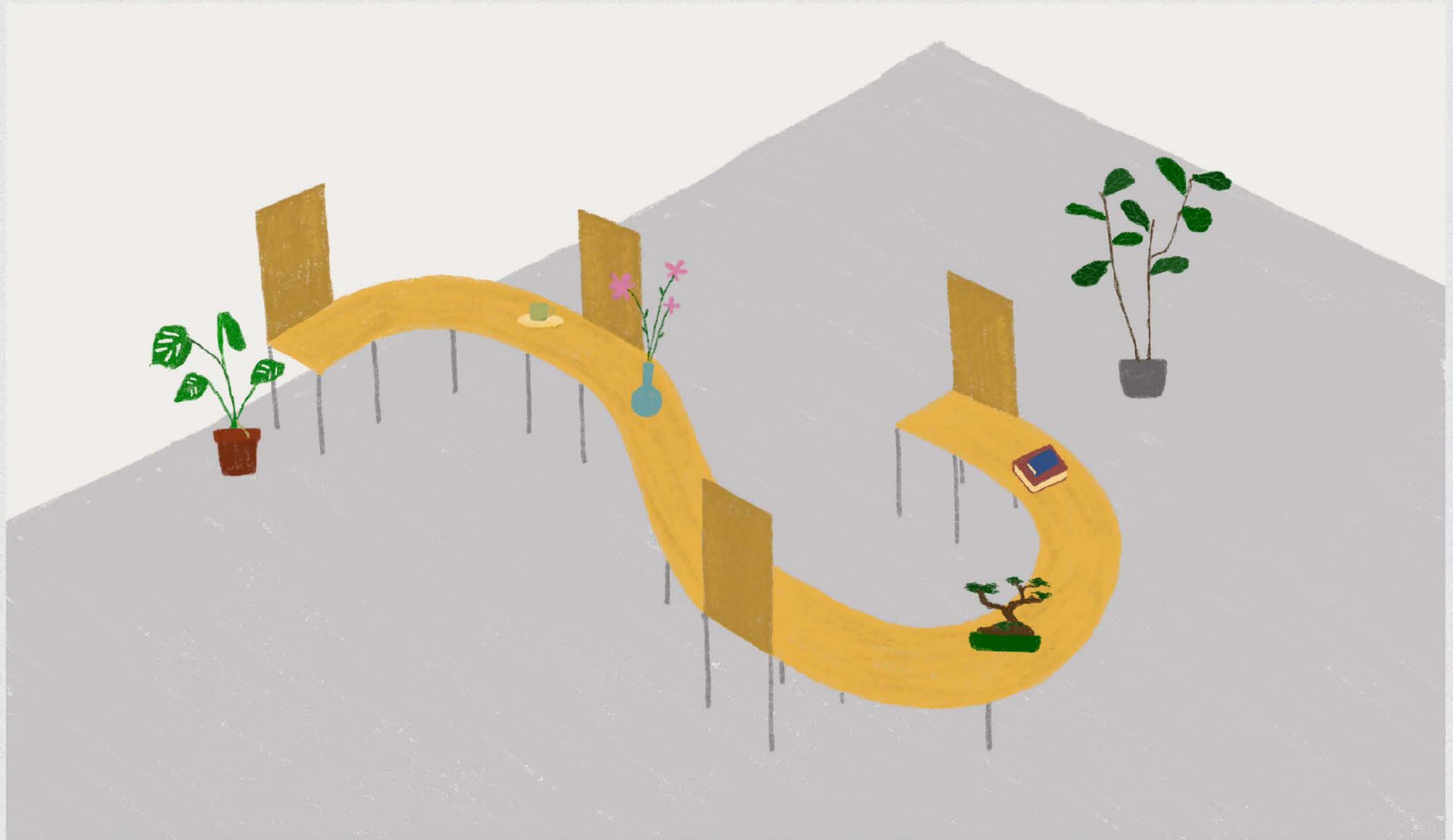
Design and Assembly —

The concept of an interconnected chair is studied and designed to be assembled and reassembled in units. Different pieces such as the plywood, steel frames, and backrests is individually designed and form the chair. (Left)



Plan and Visualization —

The interlocking mechanism of the chair is designed in detail to accommodate changes where backrests can be moved as desired or removed altogether. The piece is further divided into four distinct parts where they can be rearranged in different settings and sites. (Right)



Concept Drawing —

The original concept sketch is drawn based on a meditation of a core Filipino psychology of “kapwa,” that is “a recognition of shared identity, an inner self shared with others” (Enriquez 2004) during the height of COVID-19 and global lockdowns. It responds to the physical barriers implemented during the pandemic and how our individual selves are connected through space, time, and history. (Top Left)

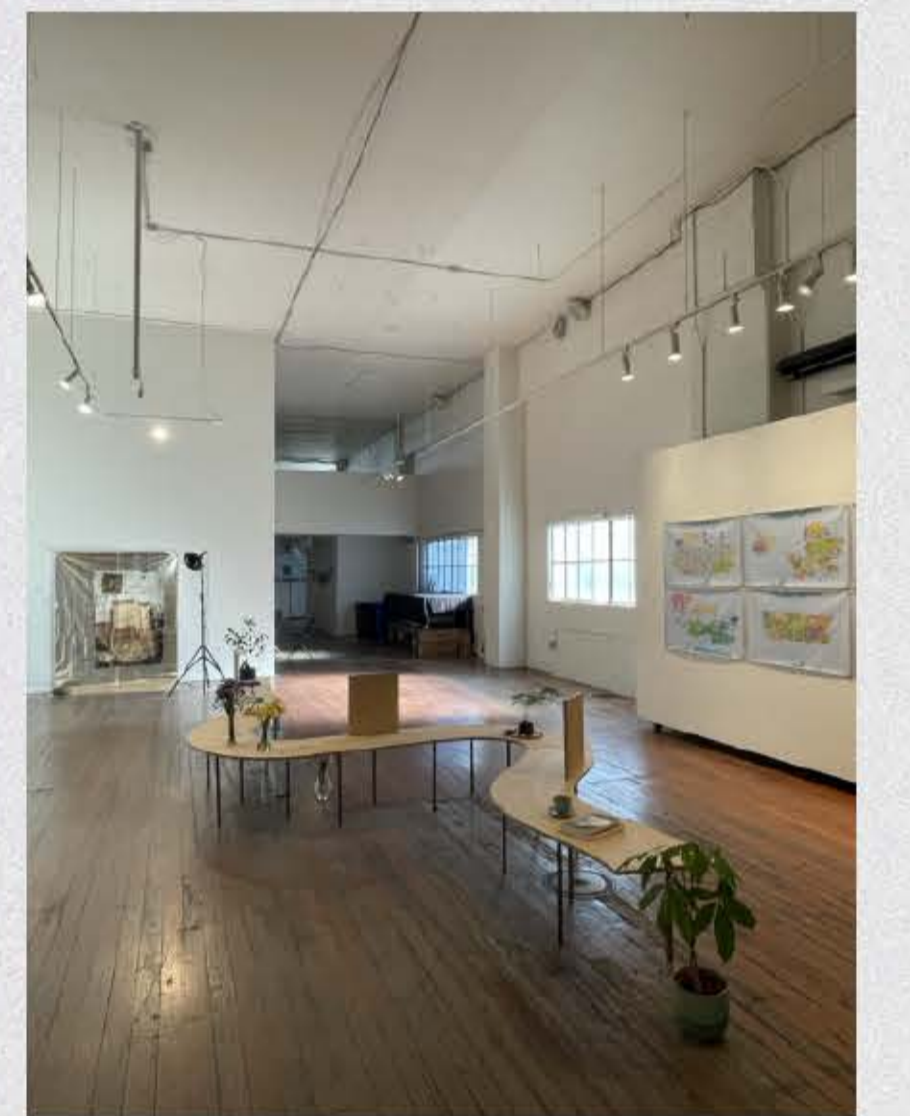
Iterations and Exhibitions —

Installation set in different galleries throughout San Francisco, CA. Each iteration is designed to be in conversation with the exhibition theme and gallery environment.

2021, Kearny Street Workshop (Top Right)

2022, Root Division (Middle Right)

2023, San Francisco Public Library Main Branch (Bottom Right)





People Coming Together —

Installation in use, activating the gallery by creating intimate spaces where people can sit, chat, and come closer together.

Commercial

Baggu, Haddock Studio



Baggu SoHo Flagship —

Drawings, Renderings, Models, Fixtures
Location: New York City, NY
Program: Commercial, Retail

Haddock Studio —

Principal: Tommy Haddock
Location: San Francisco, CA

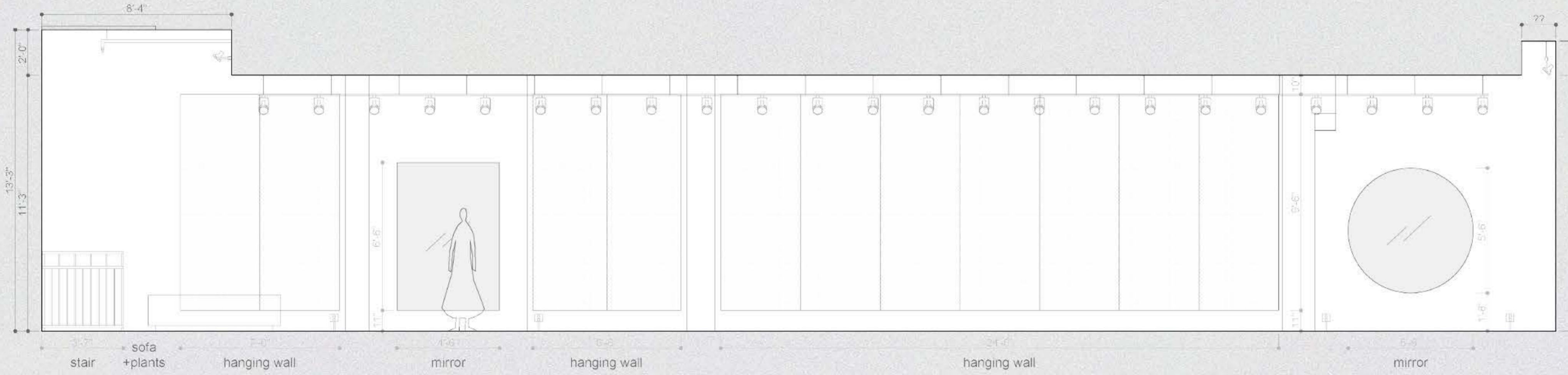
Plan, Elevation —

Plans and elevations became tools understanding composition, flow, and scale. (Center)

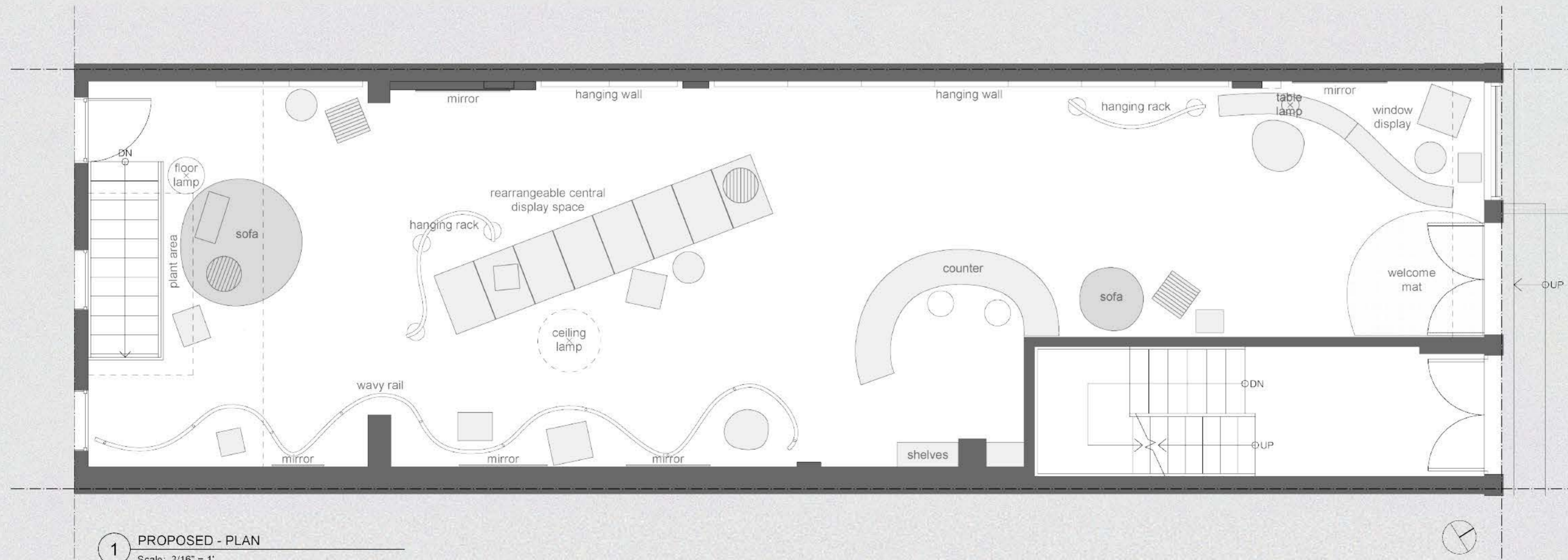
Renderings and Model —

Vignettes are used to further explore and refine fixture design, heights, and placements. (Top Right)

Models are created to visualize and experiment with the spatial experience on scale and to understand flow, arrangement and modularity of fixtures. (Bottom Right)



2 PROPOSED - EAST ELEVATION
Scale: 3/16" = 1'



1 PROPOSED - PLAN
Scale: 3/16" = 1'



Fixtures —

Custom fixtures are specially designed for Baggu to create a unique presentation using a selection of natural materials and muted colors.



Spatial Experience —

The store is designed to be a memorable experience while highlighting the brand's large product offering. The materials, colors, and fixtures complement the brand's aesthetic sensibilities while being able to stand on its own.

Residential

Cabin in the Woods, Haddock Studio



Cabin in the Woods —

Vignettes, Renderings
Location: Jenner, CA, USA
Program: Cabin, Landscape Design

Haddock Studio —

Principal: Tommy Haddock
Location: San Francisco, CA

Residential



Eagle's Nest Cabin —
Model
Location: Jenner, CA, USA
Program: Cabin, Sauna, Landscape Design

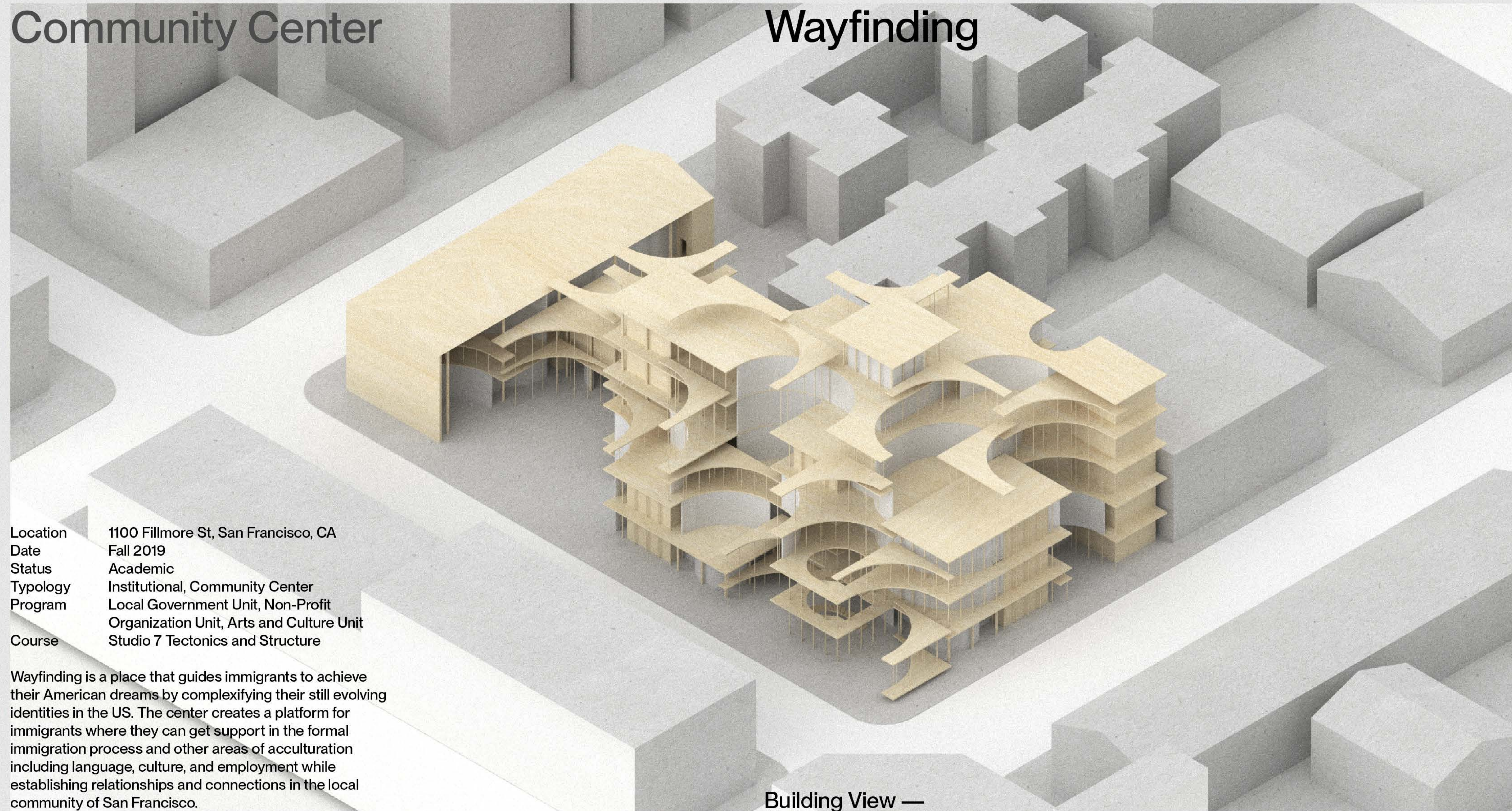
Haddock Studio —
Principal: Tommy Haddock
Location: San Francisco, CA

Eagle's Nest Cabin, Haddock Studio



Community Center

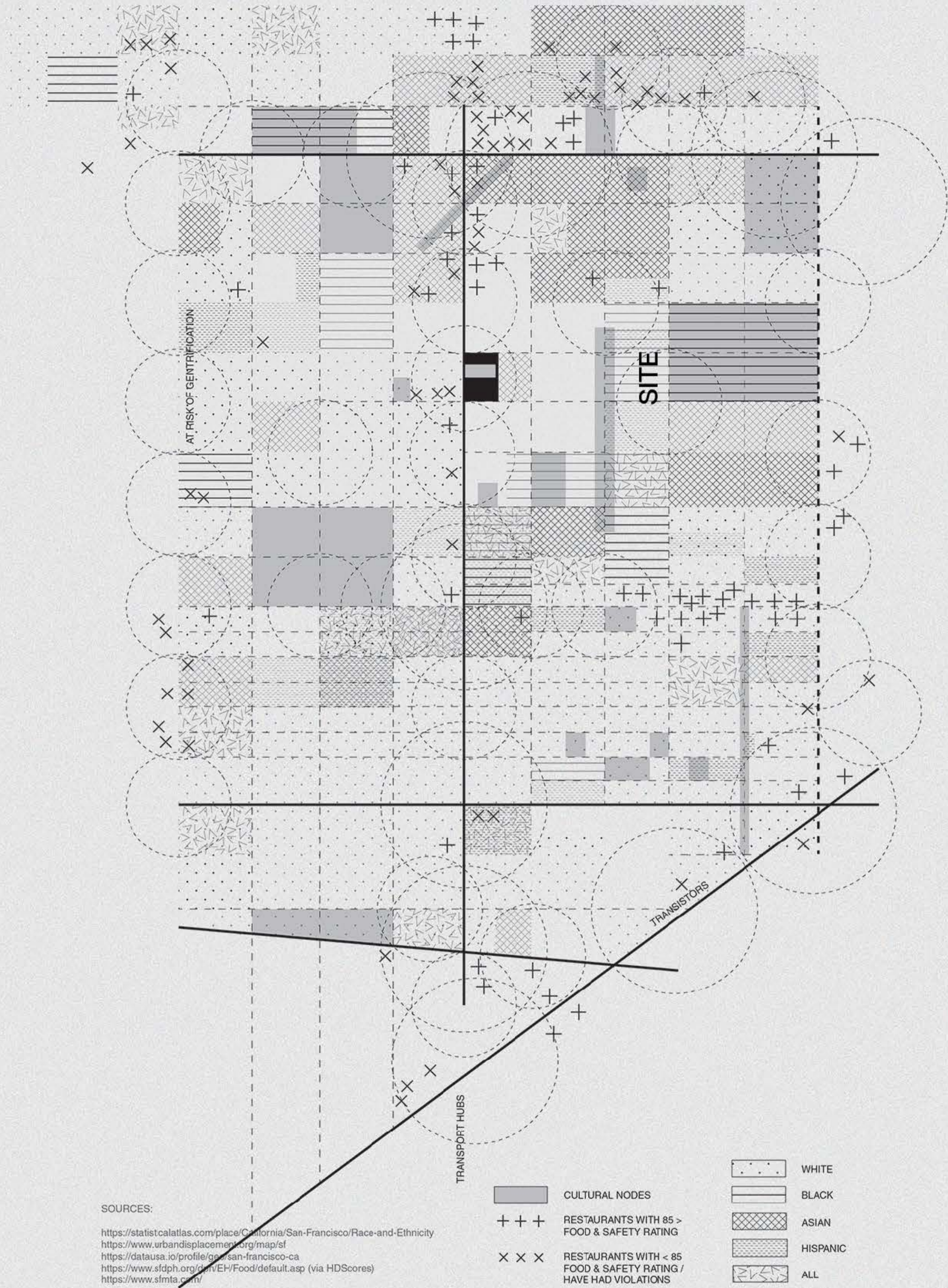
Wayfinding



Location 1100 Fillmore St, San Francisco, CA
Date Fall 2019
Status Academic
Typology Institutional, Community Center
Program Local Government Unit, Non-Profit
Organization Unit, Arts and Culture Unit
Course Studio 7 Tectonics and Structure

Wayfinding is a place that guides immigrants to achieve their American dreams by complexifying their still evolving identities in the US. The center creates a platform for immigrants where they can get support in the formal immigration process and other areas of acculturation including language, culture, and employment while establishing relationships and connections in the local community of San Francisco.

Building View —



Site Mapping —

Research start as mapping the site with racial and ethnic demographics and their access to healthy food and cultural institutions. The map is used as a generative tool to create architectural language: layering, patchwork, and carving. (Left)

Architectural Language Models —

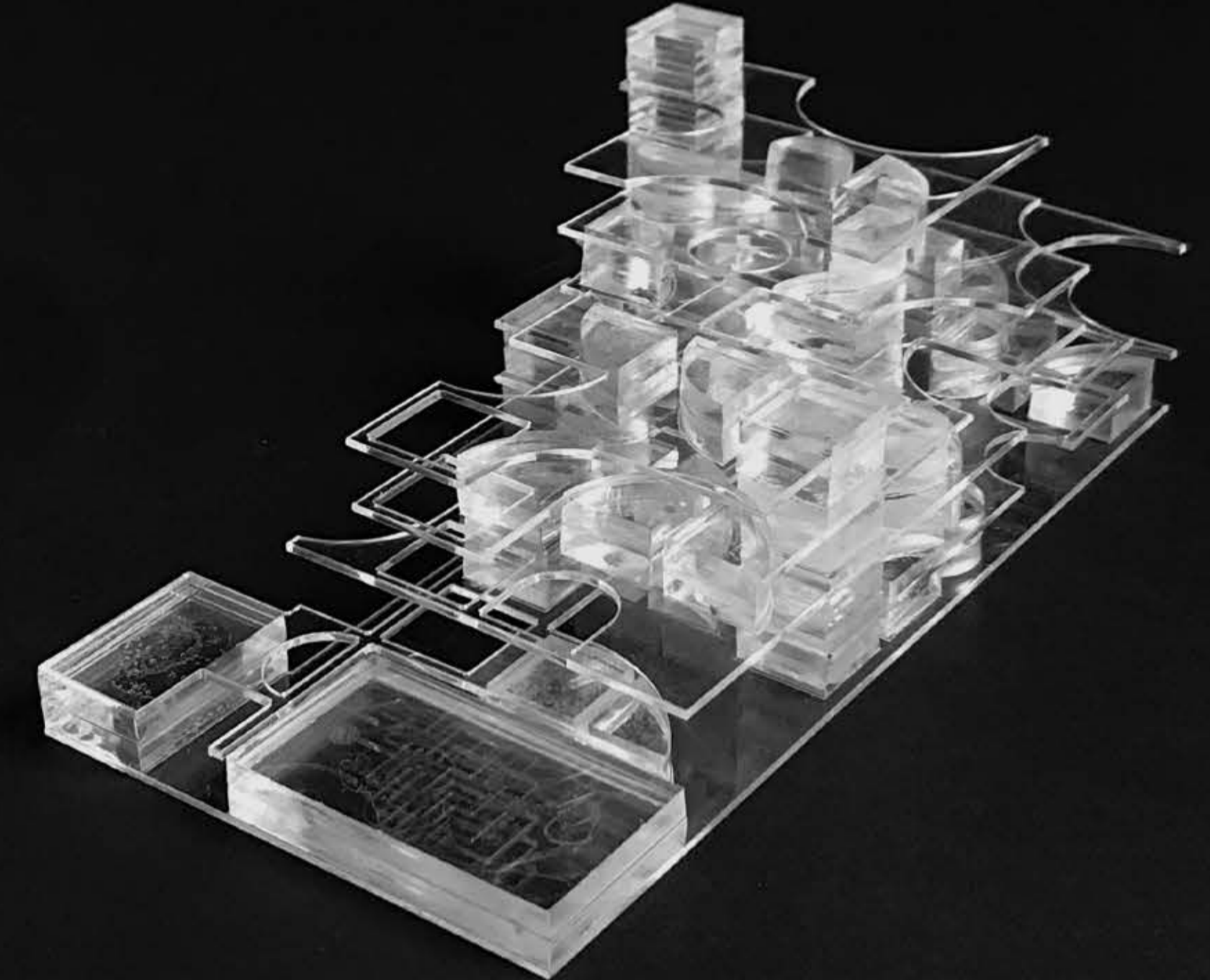
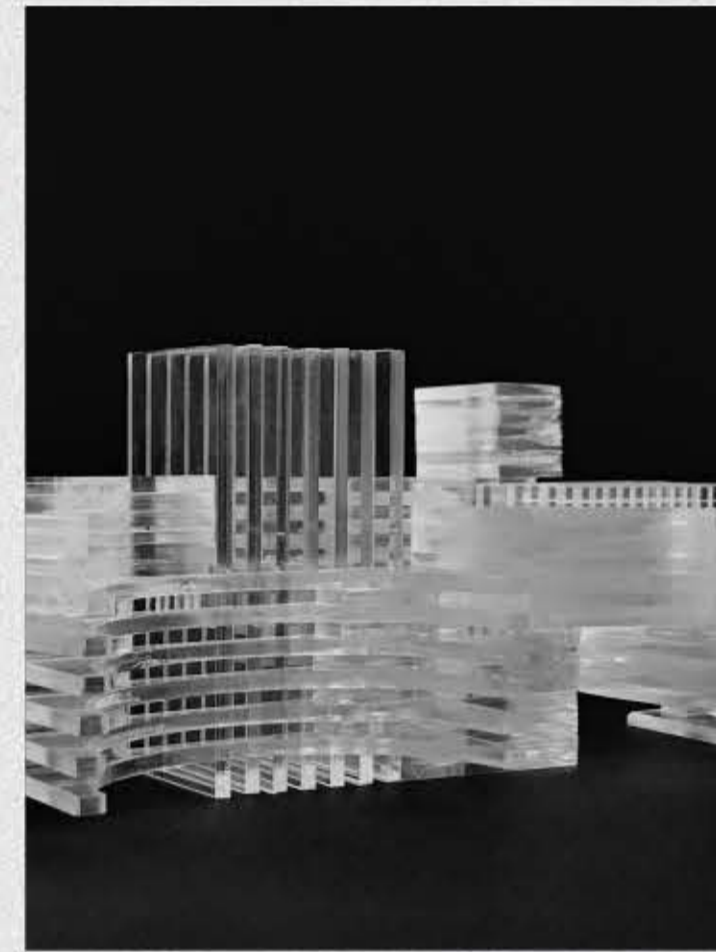
The language created in Site Mapping is extracted into distinct elements and is translated to physical models such as layered patchwork acrylic and carved wax. (Bottom)



Development Models —

The initial models' distinct characteristics of layered patchwork and carving are combined into a single model creating architectural affect and atmosphere. (Bottom)

A final model is created refining the affect and gestures along with the site constraints. The model include slabs and solid pieces defining an architectural language. (Right)



Spatial Diagrams —

Physical models are rendered in diagrams and assigned spatial qualities.

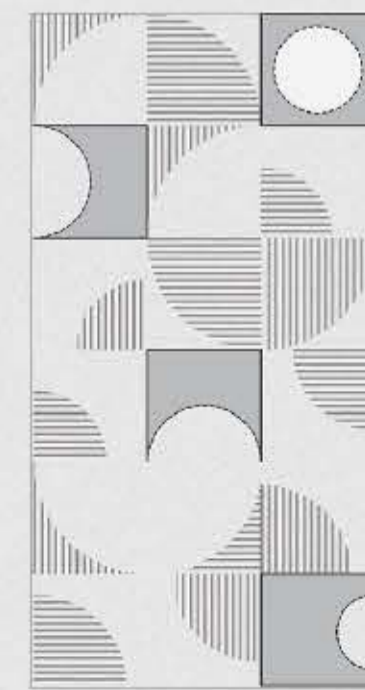
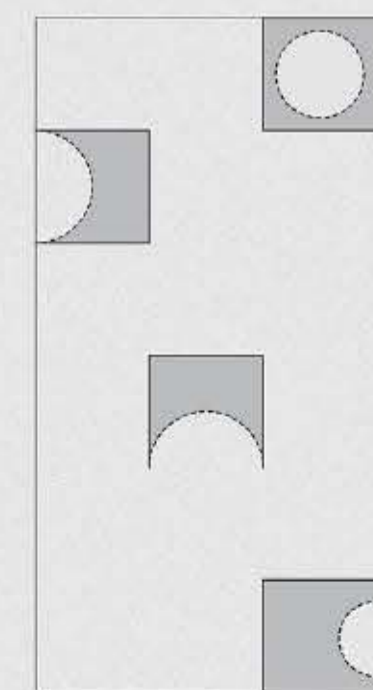
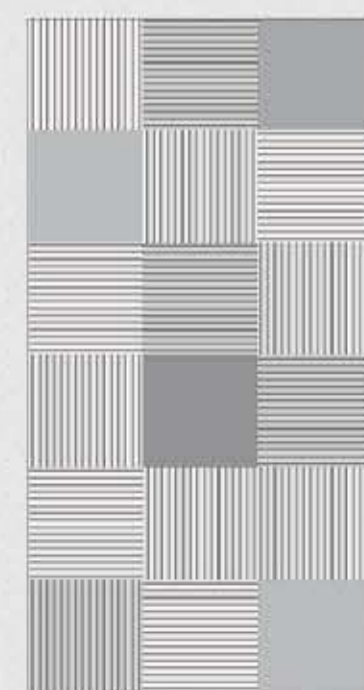
Layered Spaces: All types of spaces are laid out

Hard Spaces: Programs that are stable

Soft Spaces: Porous spaces that are divided to a grid system. Carvings are cut to create softness

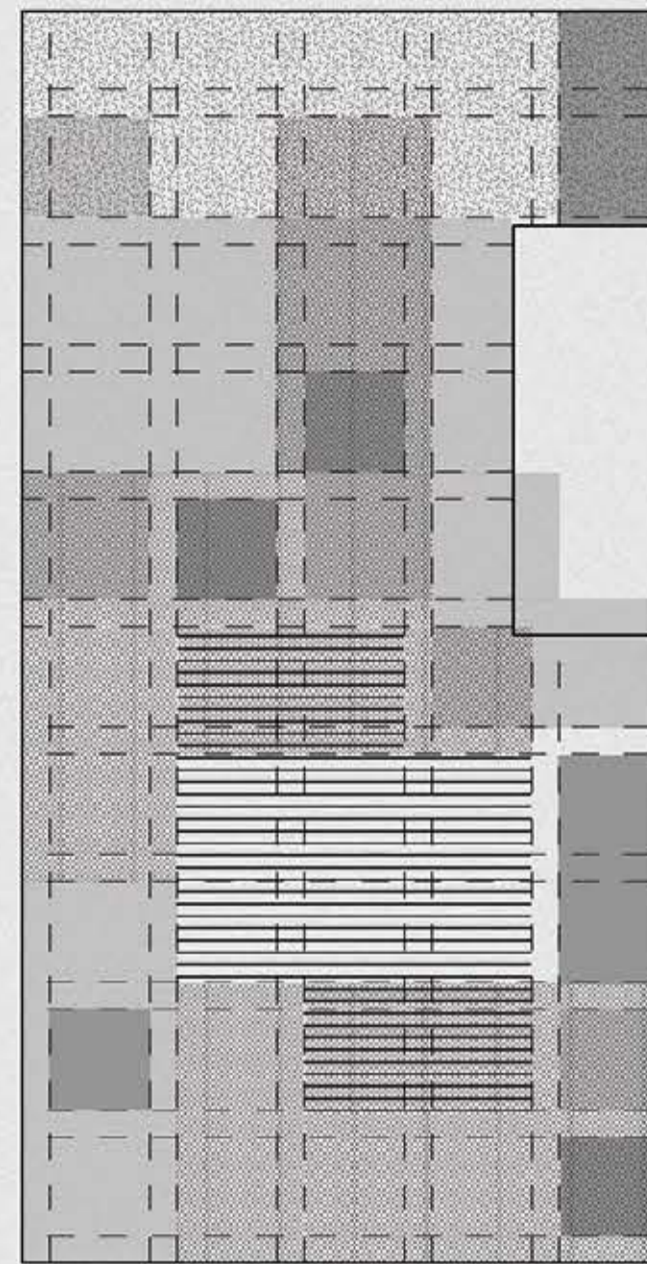
Gray Spaces: Identified through the negative left by the soft spaces

Combined: All spatial qualities are combined



Program Design —

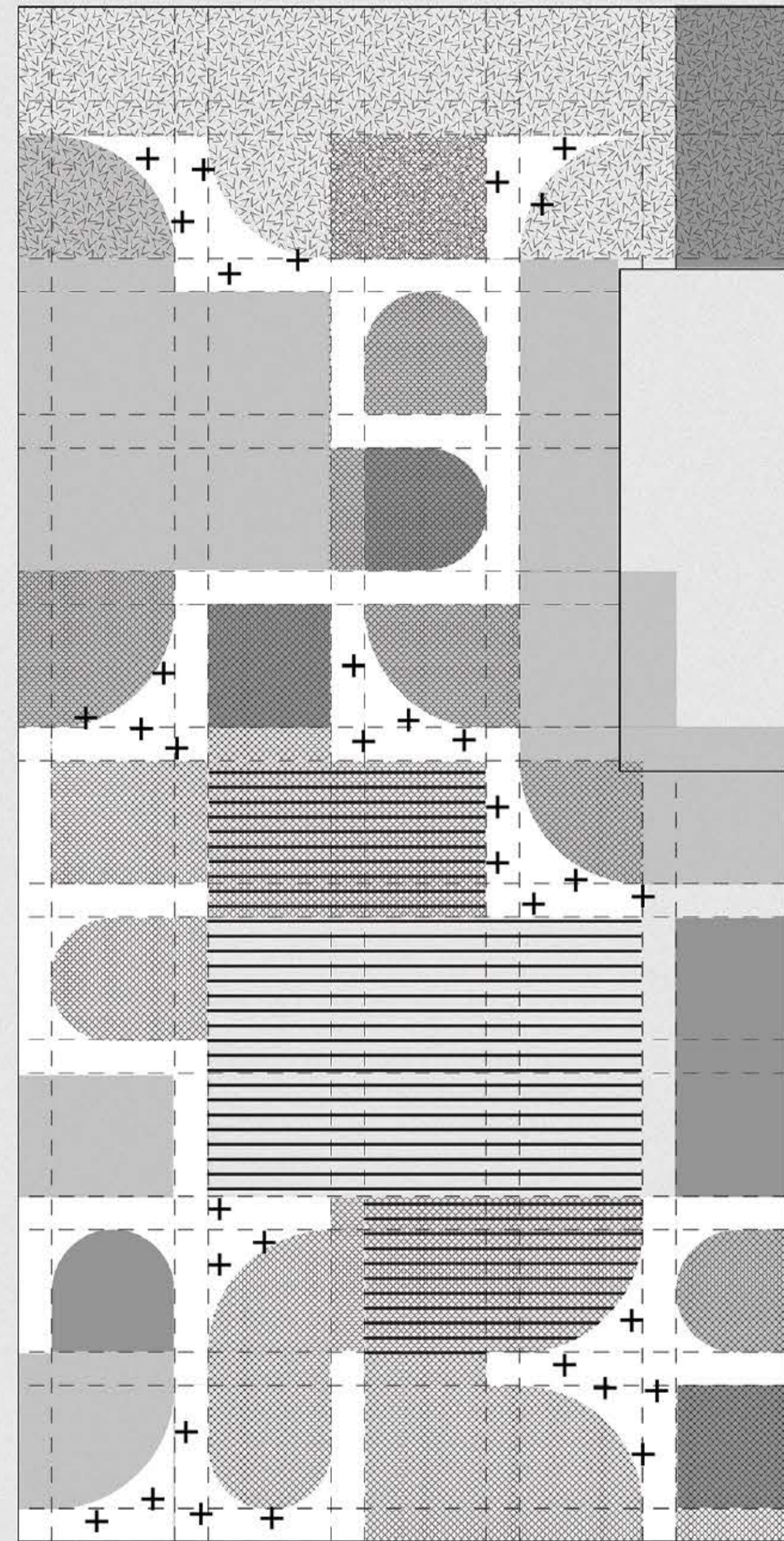
The maps and models are translated into diagrams featuring hatches that correspond to the building's programs and site context. (Left)



Program Layering



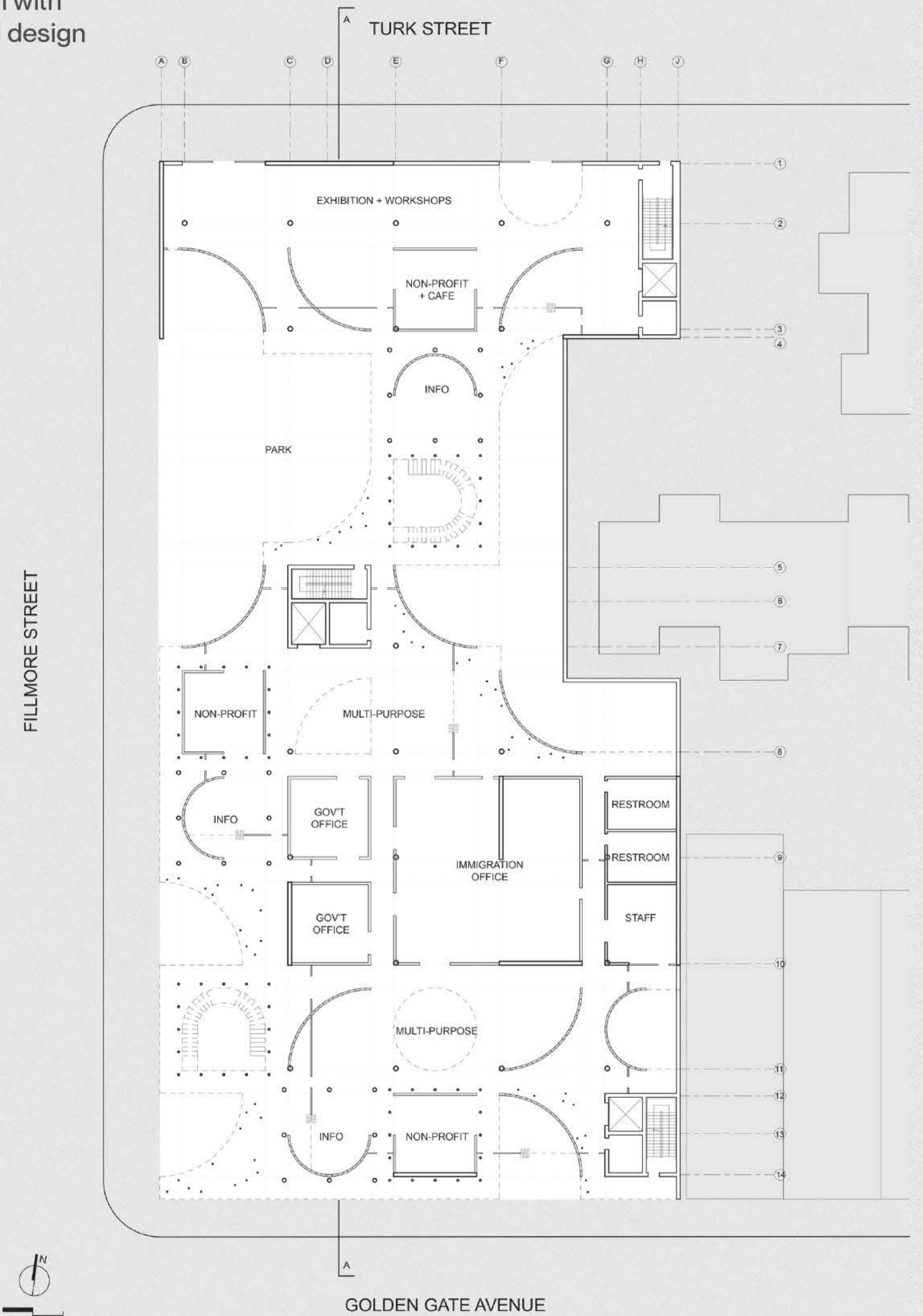
The layered programs are imposed by the language of carving that accentuates people and chance encounters. (Center)



Layered Program and Carved Interstitial Spaces

Floor Plan —

The diagram is rendered to a floor plan with the + is generated as part of structural design and architectural affect. (Right)





Wall Section Structural Model —

Final section and structural model show layered experience of the building with slabs layered horizontally in different heights to act as furniture. (chairs, tables)

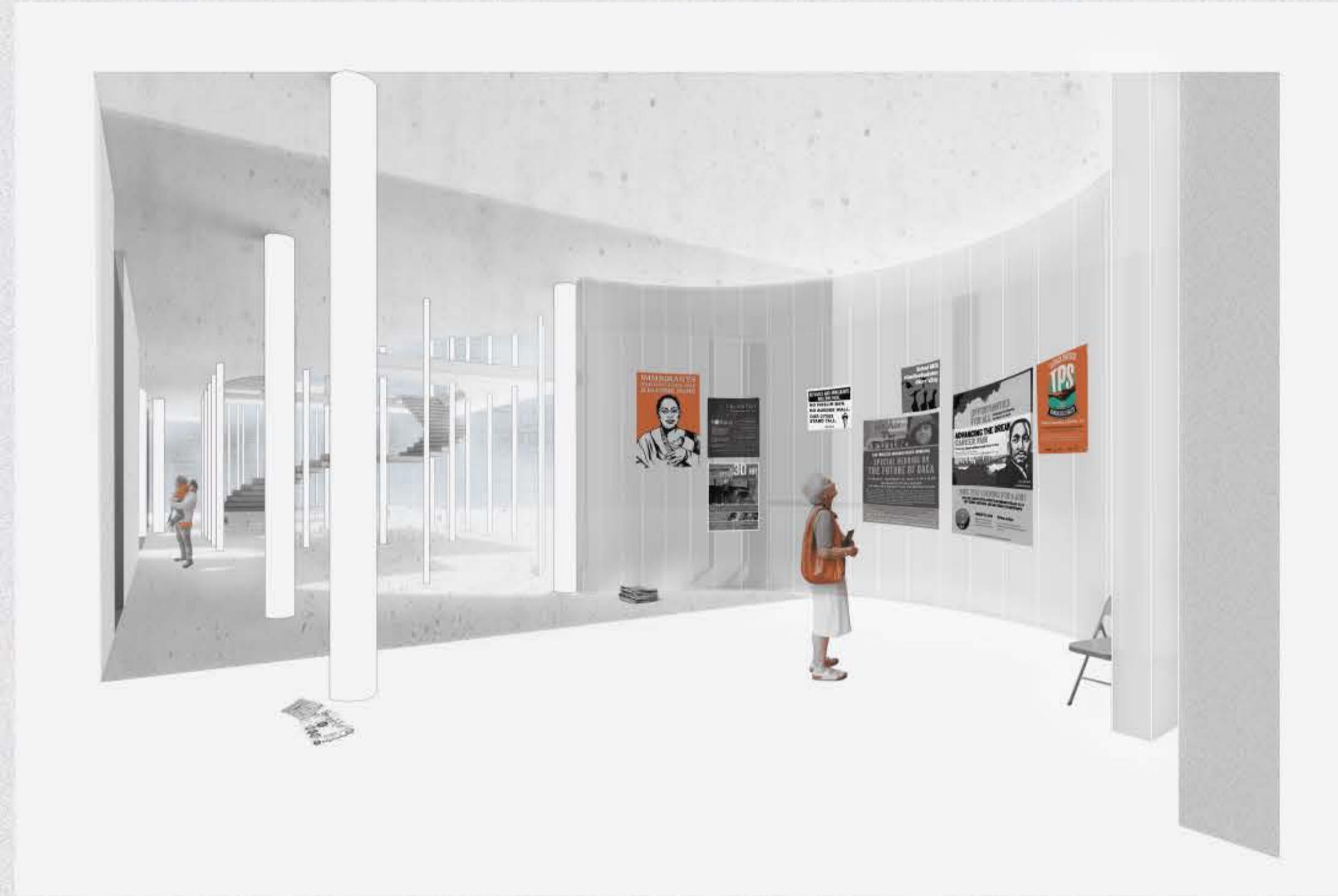
Column density and slab heights change based on programs and intimacies. Additionally, thin columns create informality and larger stable columns creating stability.

The structural design is used to create nuanced spatial compositions allowing different experiences and expressions that reflect diversity of people in the neighborhood and the city of San Francisco.



Community Plazas —

The spaces carved out along the building's perimeter welcome people from all walks of life creating chance encounters and new experiences as they form a community.



Meeting Spaces —

The language of layered transparency across the spatial patchwork provides personal and visual connections between spaces. Curved planes generate intimate spaces carved out from the layers of programs while embracing and leading users as they meander through the building.



Interior Streets —

The use of a patchwork of spaces throughout the building, the immigration process of assembling a new way of life is reflected.

JUKEJOSE

.COM

JUKE JOSE

JUKEJOSE@LIVE.COM

(415) 866 0861

JUKEJOSE.COM

INTRODUCTION

I am an architectural designer based in Brooklyn, NY. My work attempts to deepen the way we understand one's interconnectedness to their community, culture, place, environment, and history. I intend to use architecture and art as a platform to reveal the value of our histories, everyday life, and shared self celebrating the beauty of our living.

EDUCATIONAL BACKGROUND

Academy of Art University – San Francisco, CA
Bachelor of Architecture, NAAB Accredited
2015 – 2021

PROFESSIONAL EXPERIENCE

Architectural Designer, Founder
Partial Practice – Brooklyn, NY
August 2021 – Present

Find meaningful solutions to client needs ranging from graphic design to architectural interventions by creating thoughtful design options and iterations. Produce assets such as drawings, digital and physical representations needed to communicate project concept and goals. Coordinate with general contractor, fabricators, manufacturers and stakeholders to maintain design intent. Supervise project milestones and timeline ensuring prompt project delivery.

Architectural Designer
Haddock Studio – San Francisco, CA
June 2021 – June 2022

Produce code-compliant architectural drawings, representations, and physical models communicating design concept and intent for client presentations and permit submissions. Assist solving client and project needs by creating design options, iterations and revisions. Assist in researching products and manufacturers. Maintain and organize office cloud files, folders, and supplies.

Intern Assistant Project Manager (Housing Development)
Tenderloin Neighborhood Development Corporation – San Francisco, CA
August 2020 – June 2021

Supervise and organize documentation (contracts, payments, schedule, etc) for construction and rehabilitation of housing projects. Collaborate with project managers, architects, consultants, and contractors. Maintain open line of communications between all departments while ensuring progress and completion of critical tasks according to priority and scheduled timeline.

Museum Store Associate
San Francisco Museum of Modern Art – San Francisco, CA
March 2016 – October 2020

Division Advisor (Supervisor II)
Uniqlo USA – San Francisco, CA
December 2013 – October 2016

EXTRACURRICULAR

President, Co-Founder; Chapter Advisor
National Organization of Minority Architects Students Academy of Art University
Sept 2020 – Sept 2021; Sept 2021 - Sept 2022

Produce and curate programs and events such as lectures, mentorships, and volunteering relevant to the mission of the chapter and the organization at large. Manage and determine key decisions in the organization's structure, activities, and public relations ensuring its foundation, longevity, and overall success.

STRENGTHS

Independence
Collaboration
Management
Research
Organization
Commitment
Communication
Decision Making
Public Relations
Self-Motivation
Community Engagement

SKILLS

OFFICE
Mac Suite
Microsoft Office
Google Workspace

ADOBE SUITE
Photoshop
Illustrator
InDesign

CRAFT
Model Making
Installation
Fabrication

2D & 3D CAD
Rhino
AutoCad
Enscape

THANK YOU!