

Portfolio from Academic and
Professional Disciplines

**NOUR
BANNOUT**

Selected Works
Interior Design
Furniture Design

01. PRELIMINARY DESIGN		
	01.01. RE/FORM - Work Place	Renderings
02. PROFESSIONAL	01.02. MARGARET - Cafe	Custom Millwork
	02.01. WANTED X ICFF	Exhibition Design
03. FURNITURE	02.02. 77 GREENWICH AVE	Residential
	04. 01. SØD CHAIR	Furniture Design and Construction
04. CONCEPTUAL	04.02. POST-COLONIAL SILLA	Lathe Technique
	04.03. TWIN TUBES	Metal Work
	03.01. DIALOGUES - Interior Architecture of a Ruin	MFA Thesis
05. RESUME		

CONTEXT



16th Floor Rendering

SOFTWARE USED: Autocad, Revit, Enscape, Photoshop, Illustrator, InDesign

SITE: Building 77 in the Brooklyn Navy Yard, Brooklyn, NY (Landmark building)

MATERIALS: Concrete, Brushed Aluminum, Douglas Fir

This project emphasizes rendering capabilities, material and palette restraints, history of site, and concept development.

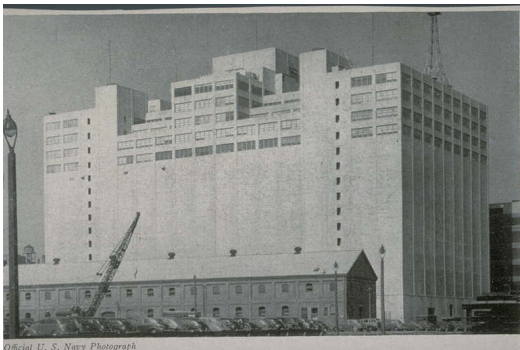
A multi-use office space proposal in the Brooklyn Navy Yard's, Building 77. Inspired by Buckingham Palace's "Red Room" and Hans Arp's "Constellations".

A satellite mobile office concept with irregular zones that abstractly separates spaces into niches through typological boundaries aimed to be more dynamic and autonomous.

Considerations: Landmark building, adaptable multi-company functions and needs, program, site context and surrounding businesses and growth, taxonomy for integrated thresholds, materiality, precedent studies.

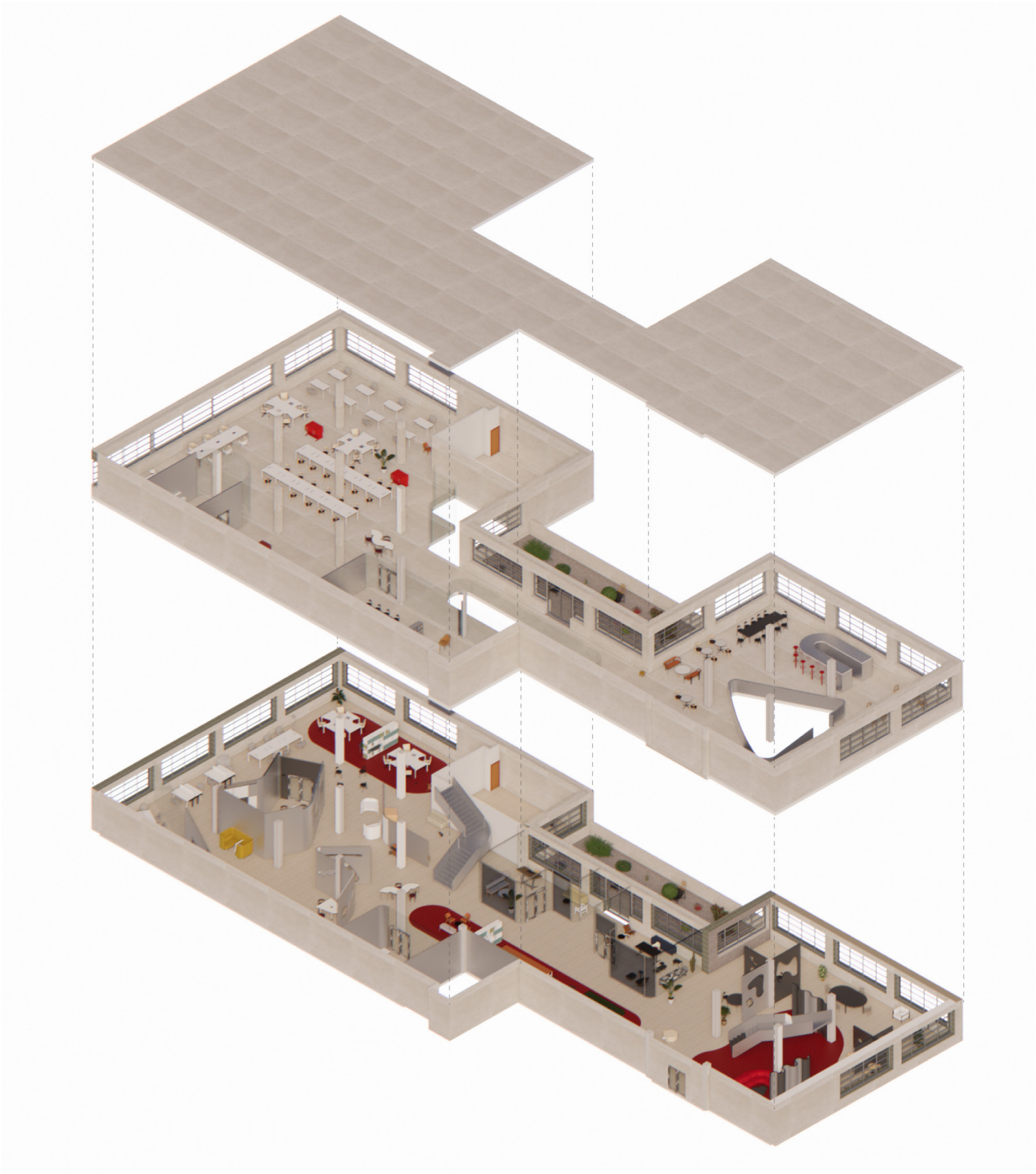


Site Map Location



Official U.S. Navy Photograph of the original Building 77 from 1948
Source: Brooklyn Photograph and Illustration Collection

REVIT SITE MODEL

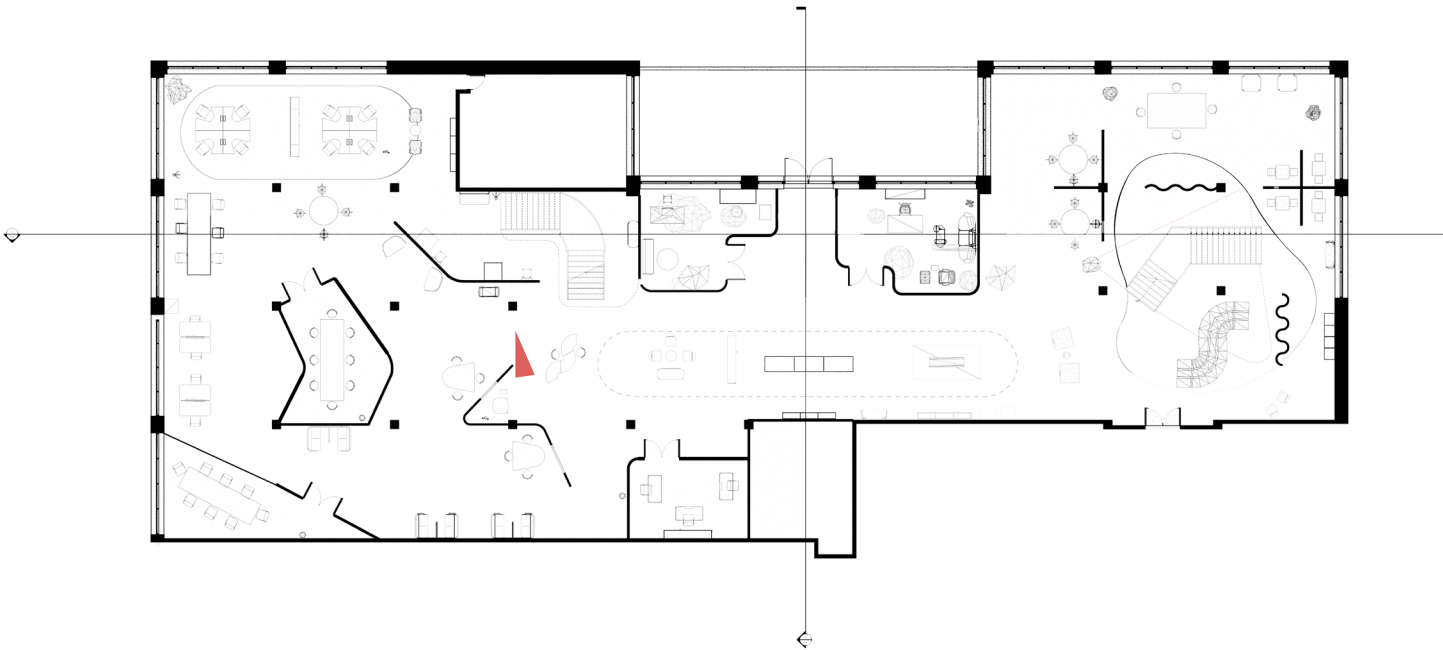


Exploded Rendered Axonometric

FLOOR PLAN + RENDERED PERSPECTIVE

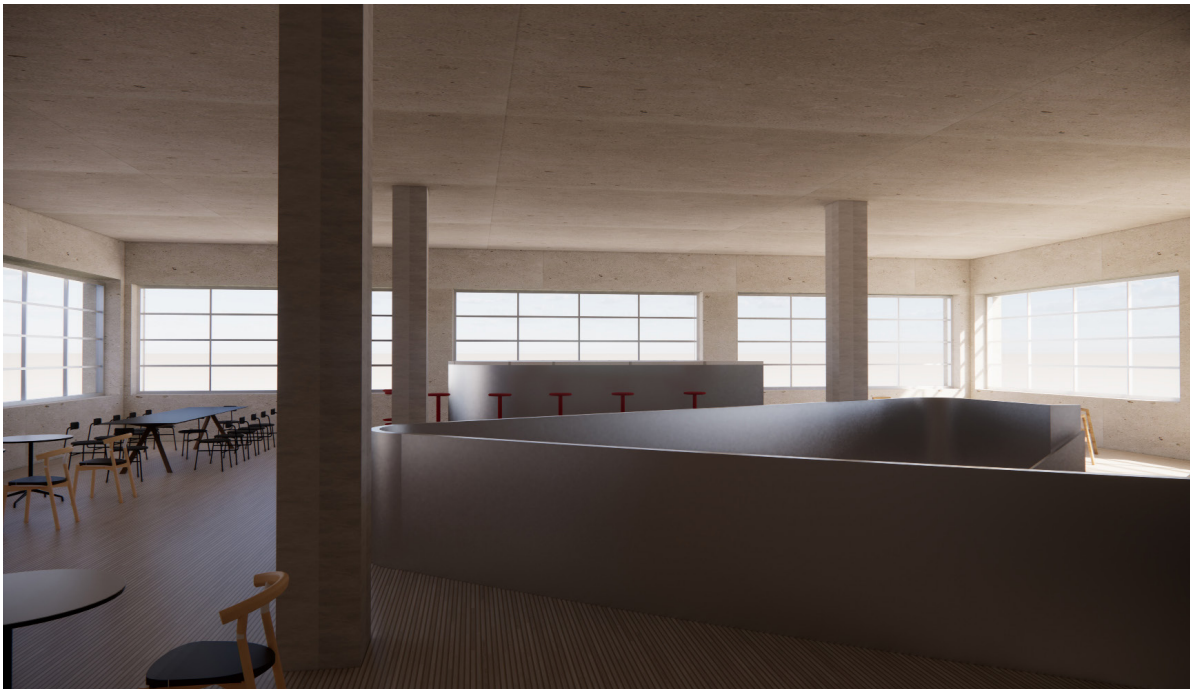


15th Floor East Staircase Rendering

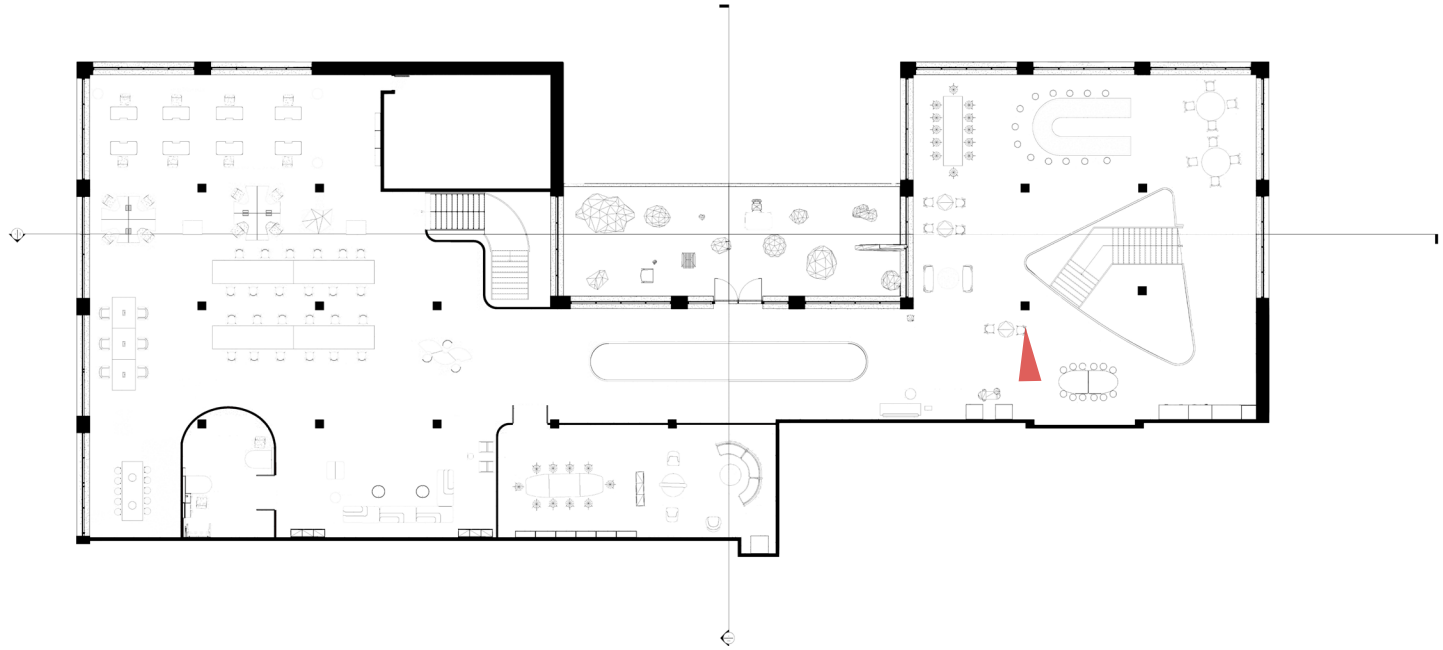


Level 15 - Floor Plan

FLOOR PLAN + RENDERED PERSPECTIVE

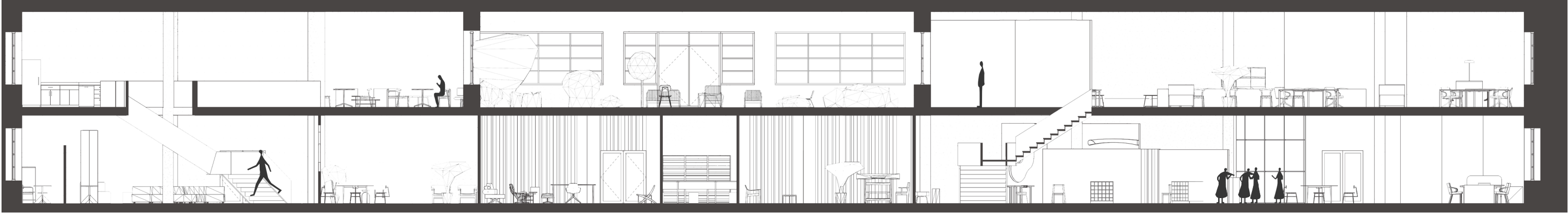


16th Floor South Staircase + Dining Rendering

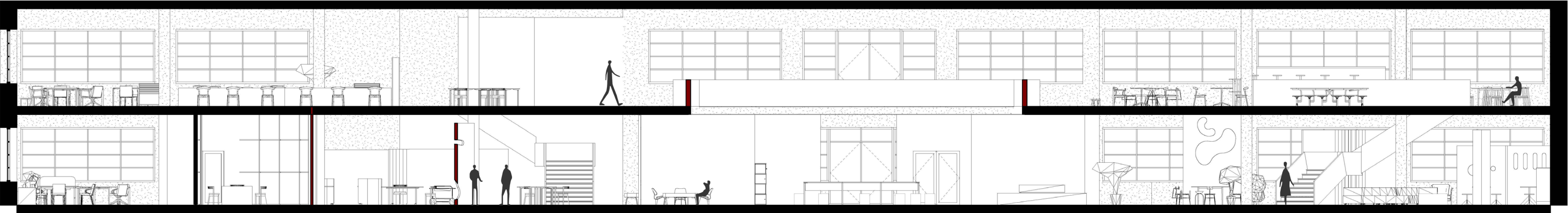


Level 16 - Floor Plan

15 + 16 FL SECTIONS



West Section

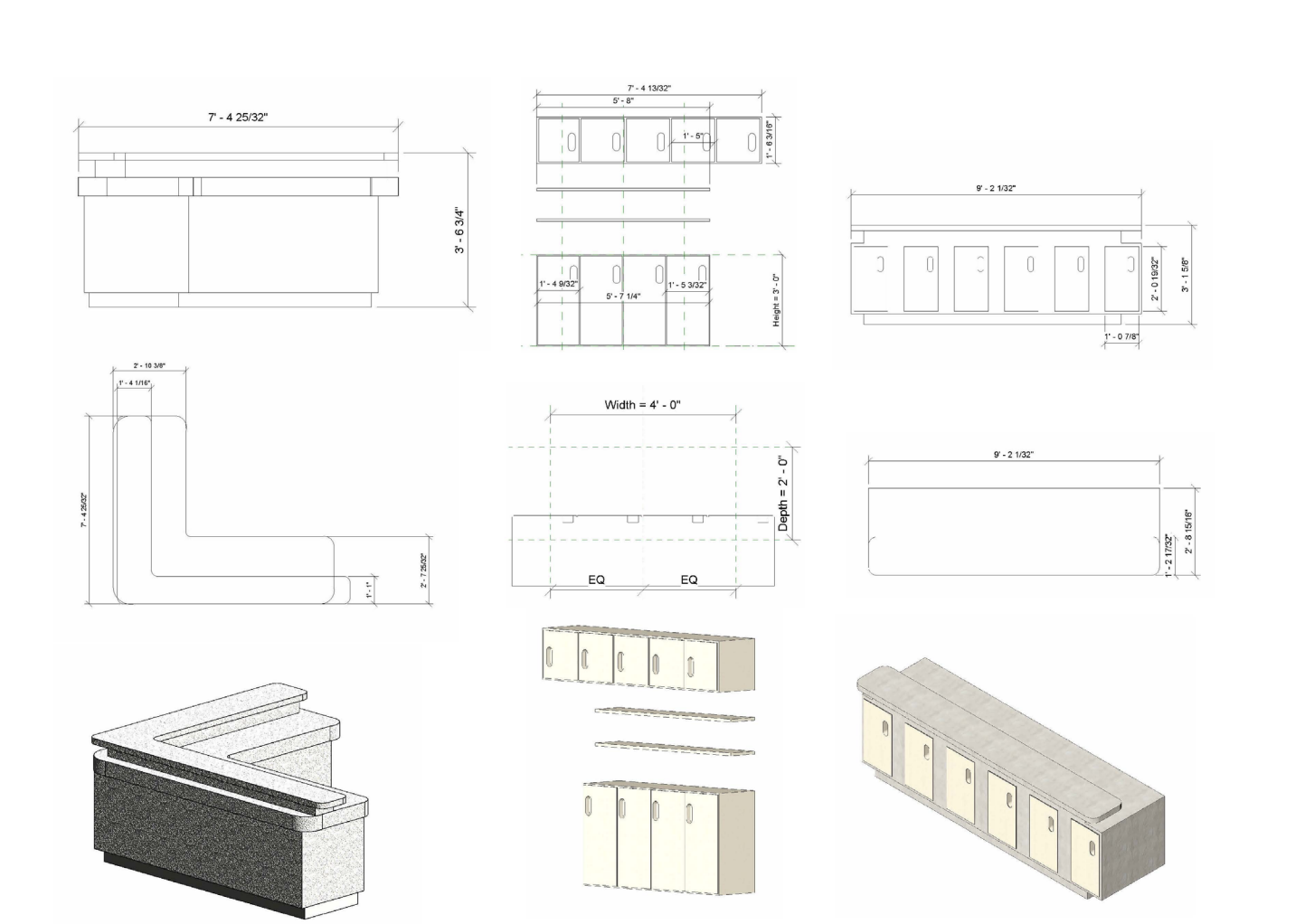


East Section



16th Floor Stair and Communal Work Space Rendered Perspective

CUSTOM MILLWORK OF BAR AND CABINET DRAWINGS, 3D MODELS



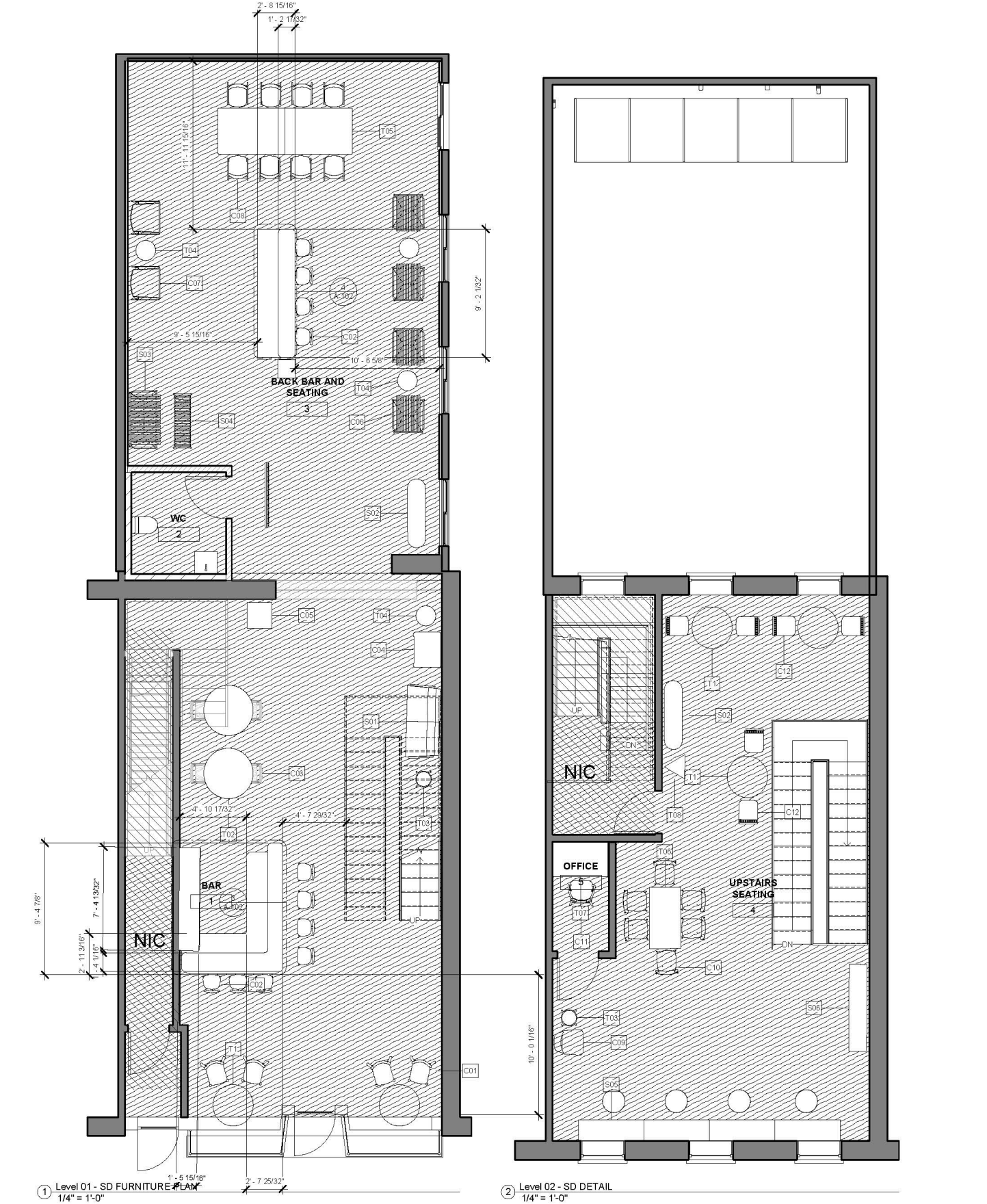
SOFTWARE USED: Autocad, Revit, Enscape, Rhino, Photoshop
SITE: 525 Atlantic Avenue, Brooklyn, NY 11217
MATERIALS: Douglas Fir, Beadboard, Terracotta Tiles, Terrazzo

A cafe proposal in Downtown Brooklyn using an existing site that was once a dental office. This project emphasized construction documents, custom millwork design, furniture, lighting, finished plans and details, FF&E, CNC and 3D modeling digital fabrication.

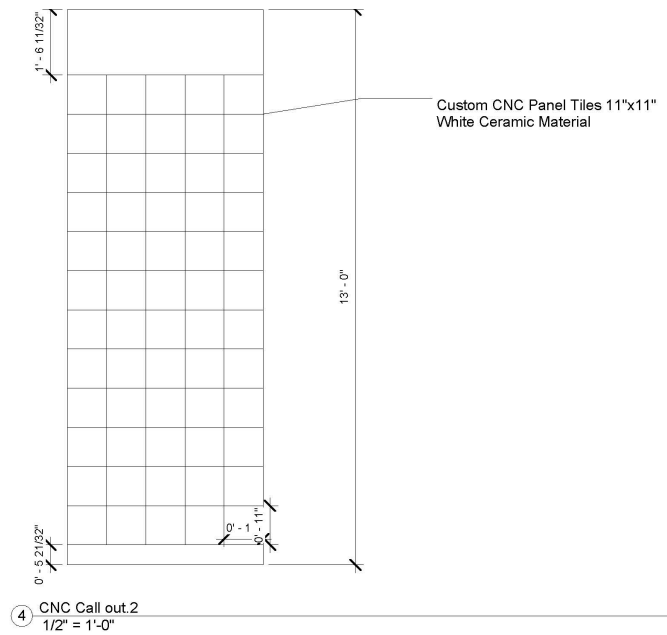


Rendered Section

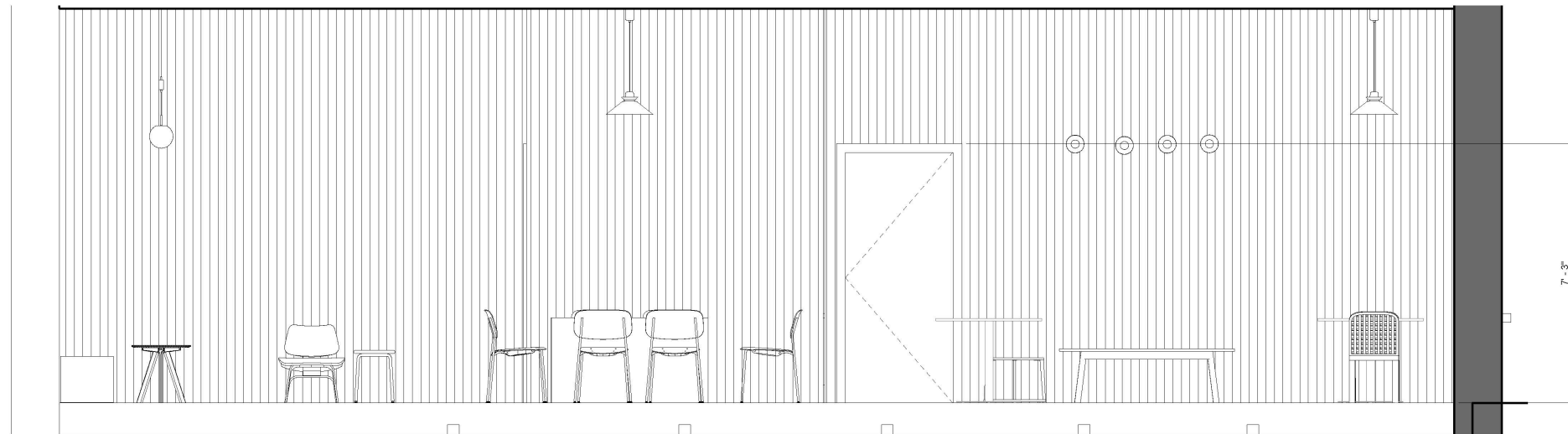
FURNITURE PLAN SPECIFICATIONS



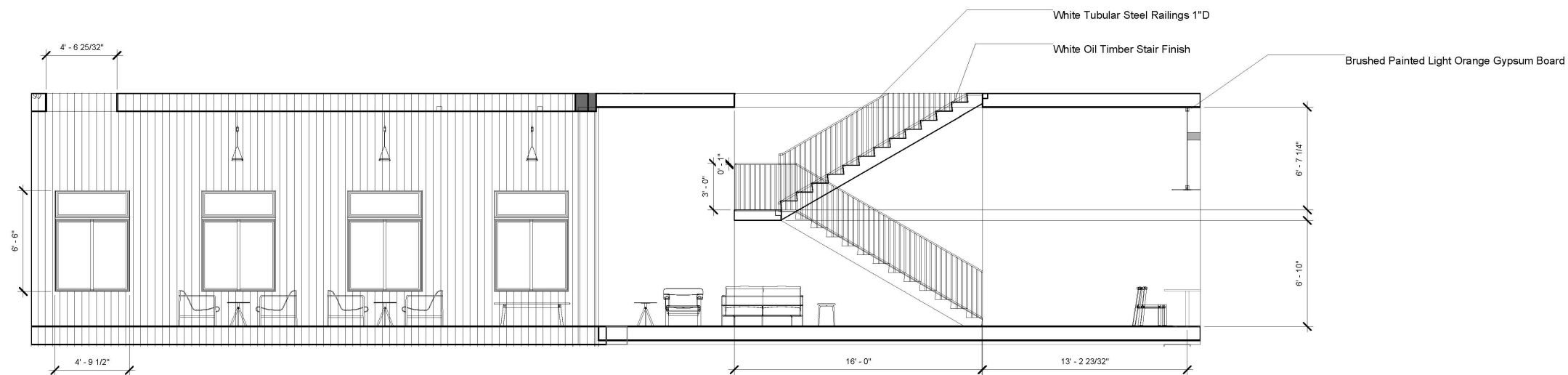
Furniture Plans



④ CNC Call out.2
1/2" = 1'-0"



② Elevation 10 - 2ND FLOOR SEATING
1/2" = 1'-0"



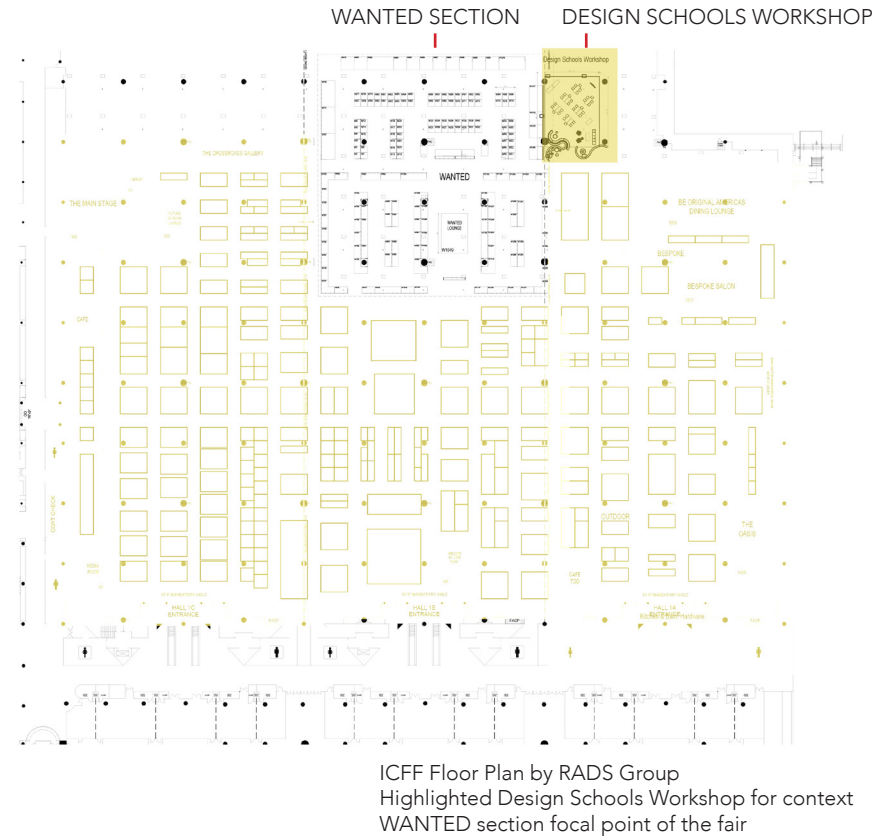
③ Elevation 17 - a
 $1/4" = 1'-0"$

CONTEXT + SITE LOCATION



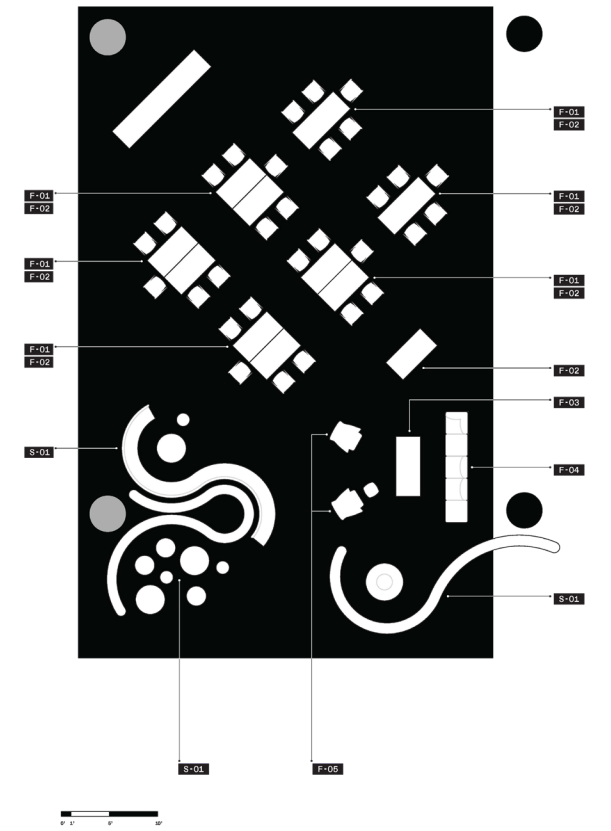
2600 SF, 30+ students, 7 schools
Worked with molo who sponsored the paper walls and seating
Consulted needs of the space with Haworth who sponsored the work tables, chairs, and lounge area
Proposed several design iterations that were different from previous years and were approved by the ICFF directors and RADS group
Project Management of Design Schools Workshop, ICFF participant assets, website product updates and featured stories
Onsite installation support for Design Schools Workshop

SOFTWARE USED: Autocad, Adobe Creative Suite, Hand Sketch



The Design School’s Workshop is a program under the WANTED design iniative by ICFF (International Contemporary Furniture Fair). Schools from different countries come together for an intensive and immersive 4-day workshop to research, study and design a solution for a topic relevant in society. This year’s workshop, “Eating in NYC: Reconnecting and Redesigning Food Systems”, was headed by RISD and sponsored by molo and Haworth.

FLOOR PLAN + SKETCH PERSPECTIVE + DETAILS



- DESIGN SCHOOLS WORKSHOP
- YOUCTS BY

S-01

Softwall and Softblock

Designed by Stephanie Forsythe and Todd MacAllen

Brown paper finish
- YOUCTS BY

F-01

Very Stacker Chair

Designed by Nicolai Czumaj-Bront and Michael Welsh

White finish

F-02

Planes Training Table

Designed by Nicolai Czumaj-Bront and Dan West

White finish

F-03

Cassina Coffee Table

Black finish

F-04

Resonate Modular Sofa

Designed by Haworth and Gensler Design NYC

Blue finish

F-05

Lud'o Lounge Chair

Designed by Patricia Urquiola for Cappellini

Grey and Red finish
-
- The exhibition design was focused on integrating the dynamic and growing floorplan of ICFF within the WANTED section. Working in the Javits Center imparted constraints such as the existing air walls, lighting, floor, circulation, etc. The initial design considered noise, work space needs for the students and instructors that were flexible with an area to focus within the 80,000 sq ft. fair. This was a studio crit environment that also required a threshold that both invited curious passersbys and also functioned as a barrier, seating and rest areas. The paperwall and seating designed by molo, in collaboration.
- Graphic by RADS group with specs and flooplan provided by me using Autocad.

SITE + GENERAL ENVIRONMENT



Entrance and Threshold: molo Paper Wall and Seating



Photography by Jenna Bascom

PROCESS, DIAGRAMS, LAYOUT ITERATIONS

A.

B.

C.

D.

Sophie Taeuber Arp 1941 and
Richard Serra - Concept Inspirations

CONTEXT



Dining Room:
HAY Rey Chairs, Georg Jensen Tableware
New electric sources for Noguchi Pendant

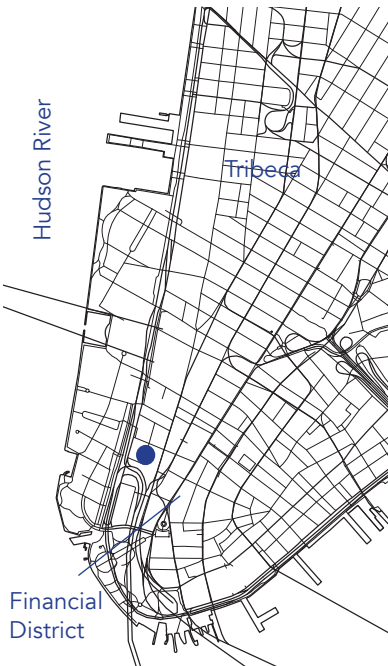


Primary Bedroom:
Farrow & Ball Skylight
New electric sources for sconces

77 Greenwich Avenue, located in the Financial District close to Battery Park was designed by TenBerke and FXCollaborative and constructed in 2020. This apartment is the first purchase for a young couple: a brand new 2BR, 2.5BTH with cascading views of the Hudson River and skyline.

- Field Measurements and drafting Plans, RCP, Elevations, 3D model
- Scope of Work
- Project Management
- Electrical Work with contractors
- Custom millwork proposal with drawings and 3D model
- Paint, Furniture, Fixtures, Objects, Tableware, Textiles, Lighting
- Consulting
- Styling and Design Direction

SOFTWARE USED:
Autocad
Rhino
Adobe Creative Suite



Site

August - November 2024



Furniture Plan

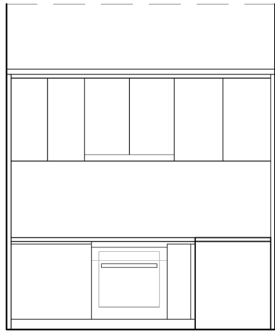


77 GREENWICH ST. FURNITURE PLAN

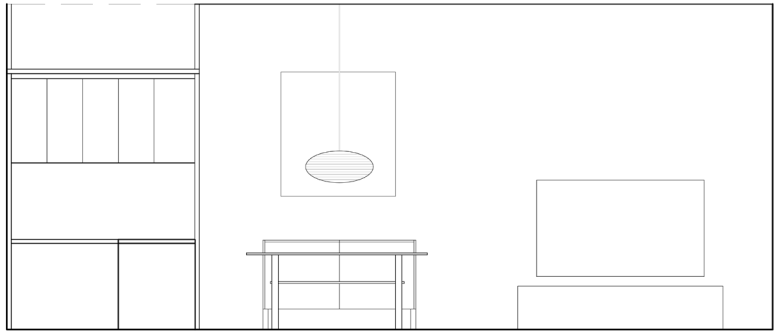
3/8" = 1'

Furniture plan from field measurements
West facing views of the Hudson River

KITCHEN AND DINING ELEVATIONS



77 GREENWICH ST. KITCHEN ELEVATION 1/4" = 1'



77 GREENWICH ST. DINING ELEVATION 1/4" = 1'

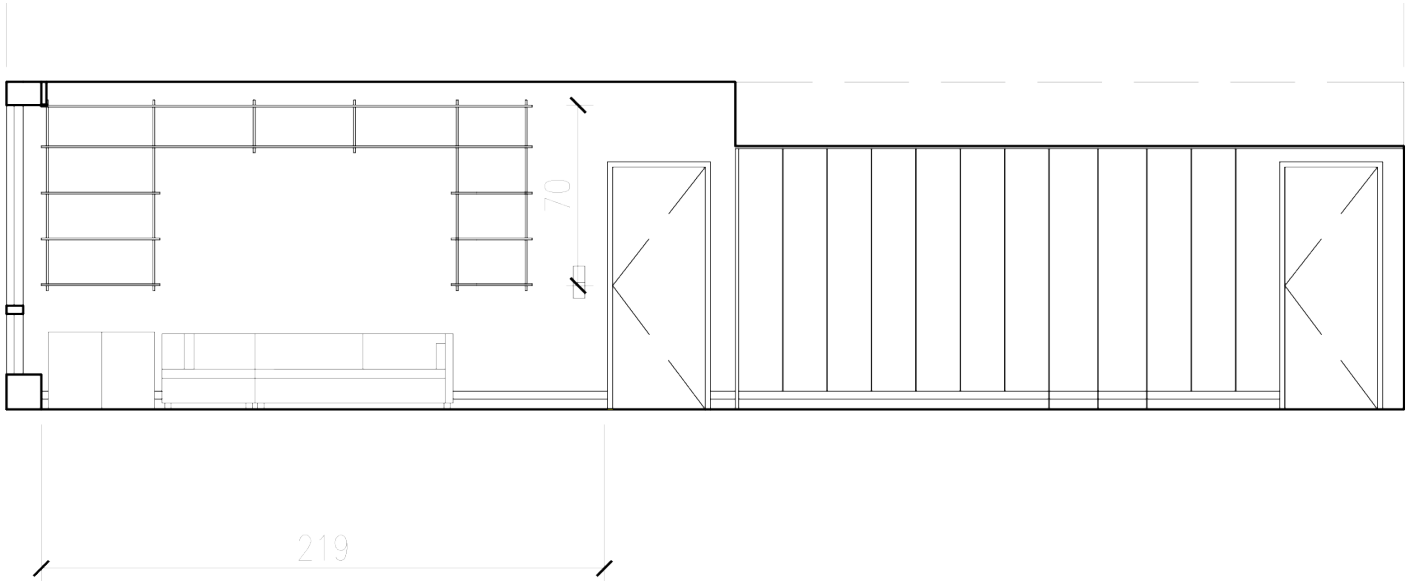


Living + Dining Room:
Layering geometric patterns, neutral colors and different wood materials to create softness

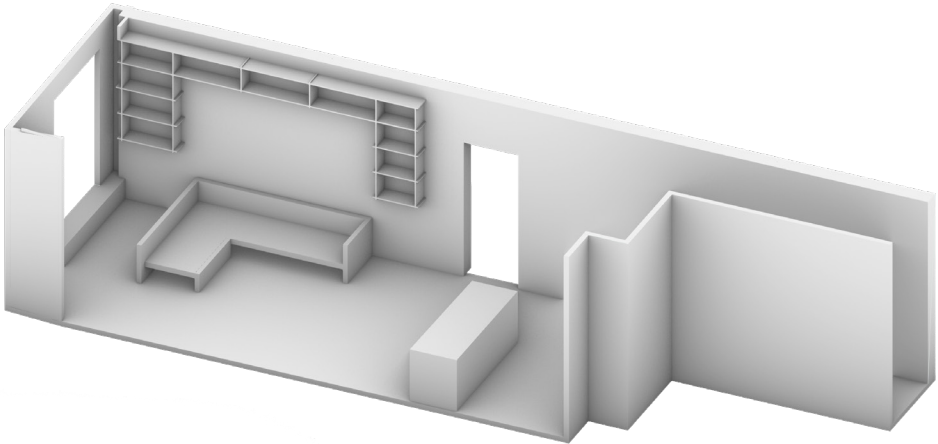


Living Room:
New electric source for dimmable track light
New shelving system

CUSTOM MILLWORK PROPOSAL ELEVATION + 3D MODEL



77 GREENWICH ST. LIVING ROOM MILLWORK ELEVATION 3/8" = 1'

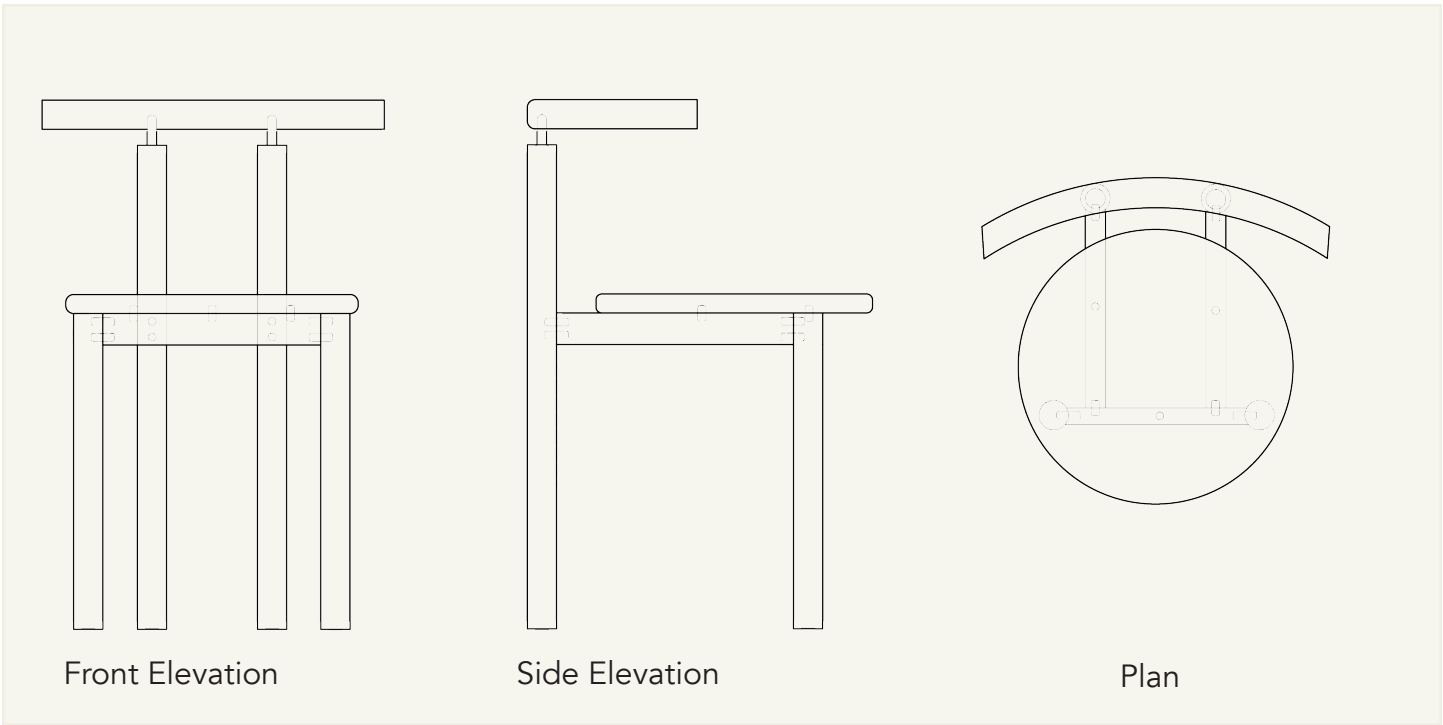


Rhino 3D Model

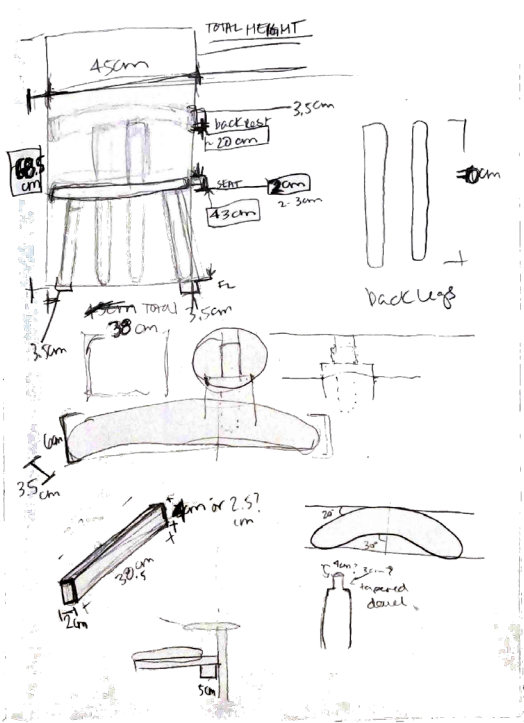


The SØD chair, meaning ‘sweet’ in Danish, was designed and crafted in Copenhagen, Denmark during an intensive summer furniture design program where we traveled around Scandinavia for research and met craftsmen from Denmark, Sweden, Finland and Norway. This seat was inspired by Alvar Aalto’s, “Mod 68” chair, which was seen in various environments across Scandinavia, from high-brow to more public, casual settings.

This light-weight, hybrid chair/stool is not meant to take up a lot of space. With its rounded gestures and peeking joints, the softness can add to any environment on its own or adapt to what is existing. It can function as whatever the user wants it to be.



European white maple with a soap finish
Laminated back rest
Routed legs

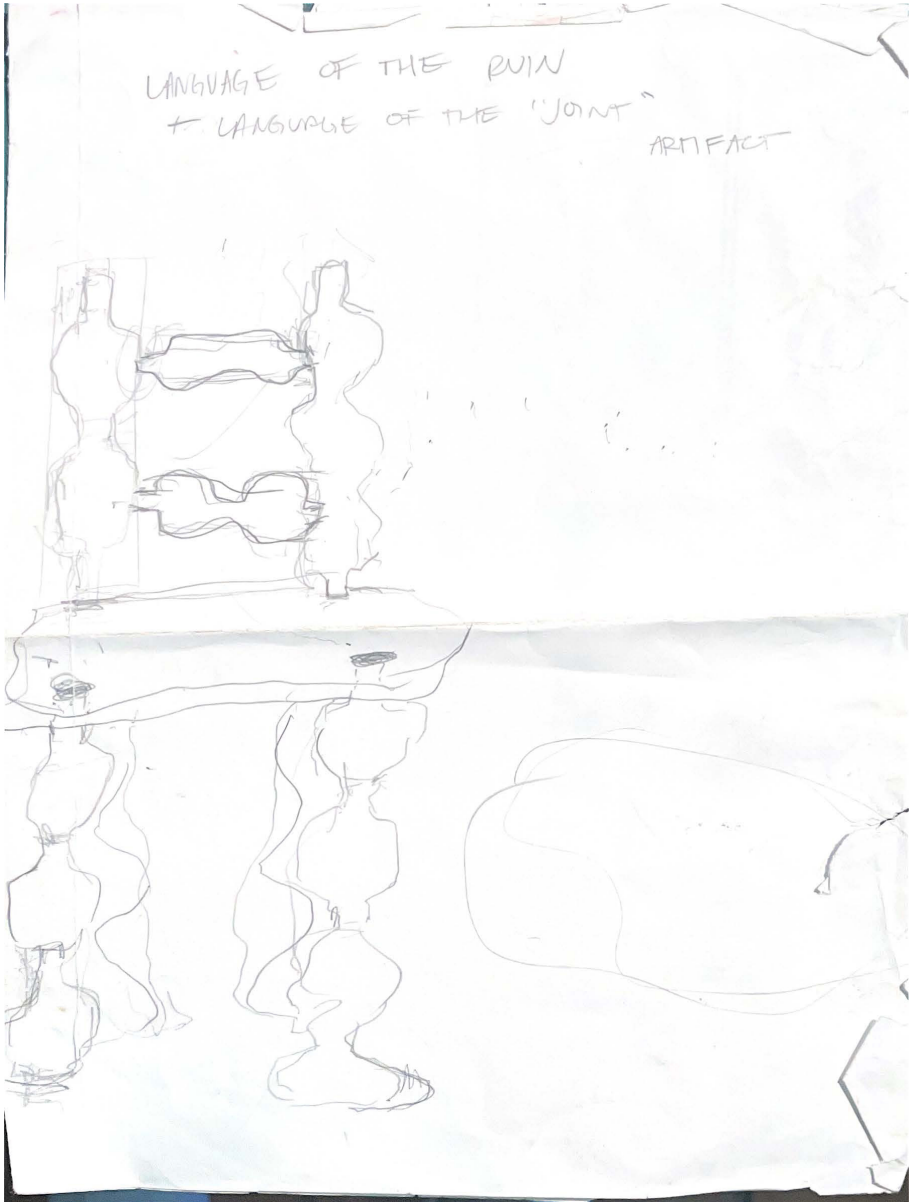


Initial Sketches



Post-Colonial Silla is a seat, which is also an artifact, which is also a sculpture, is a reaction to the indoctrination of the canon for colonial standards of beauty.

A meditation on reimagining a language that is without hierarchy, acknowledges oppression, and something that cannot be predetermined in judgement.



This piece accompanied my final thesis exhibition.

Currently being exhibited at Pratt Institute's Myrtle Hall Gallery.

Selected piece for Pratt Institute's archival catalogue.

Legs and back created using the lathe.

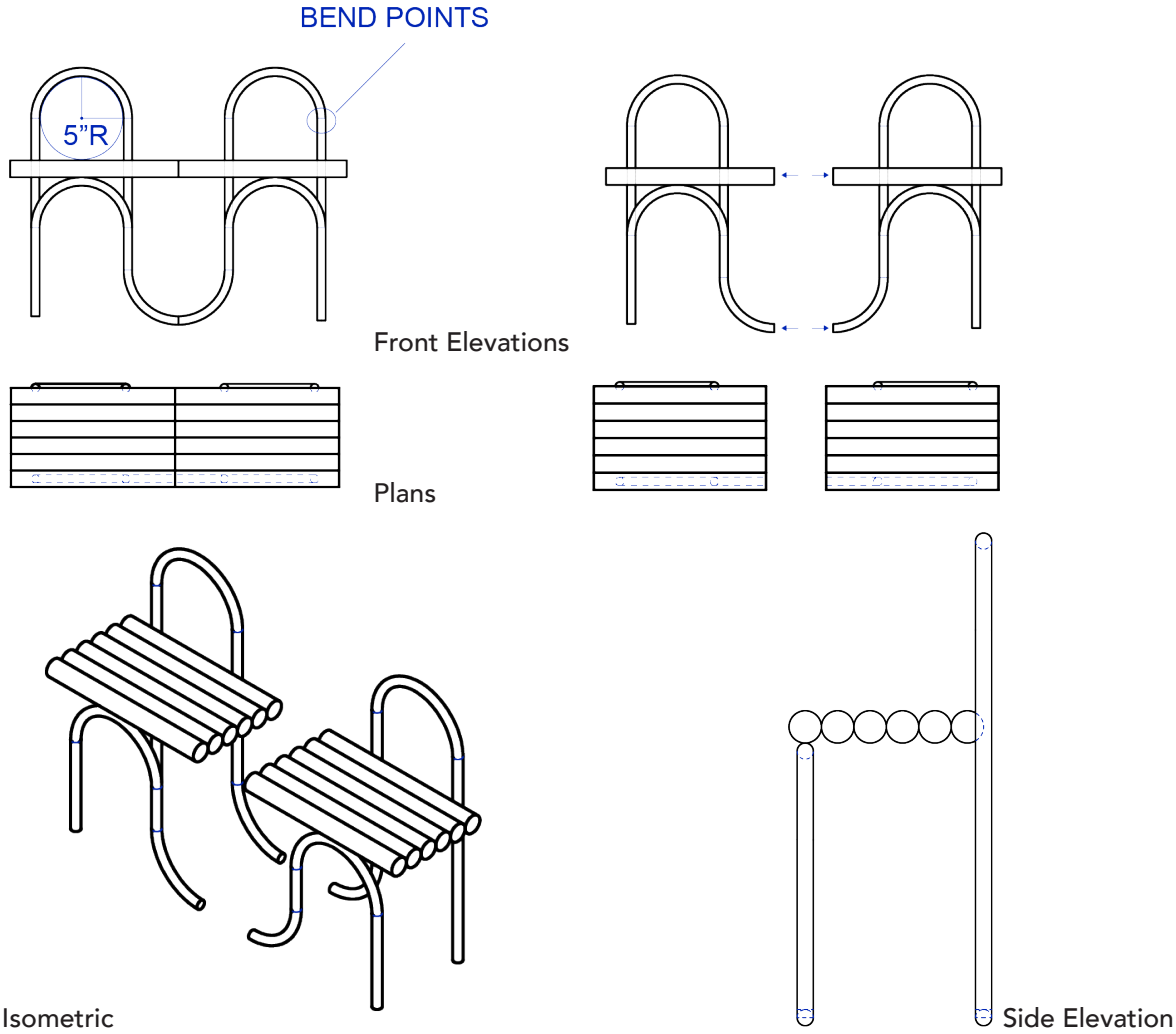
Cherry wood
Lathe
Carving/Grinding/Sanding tools

This sketch is the only drawing created to build this piece.

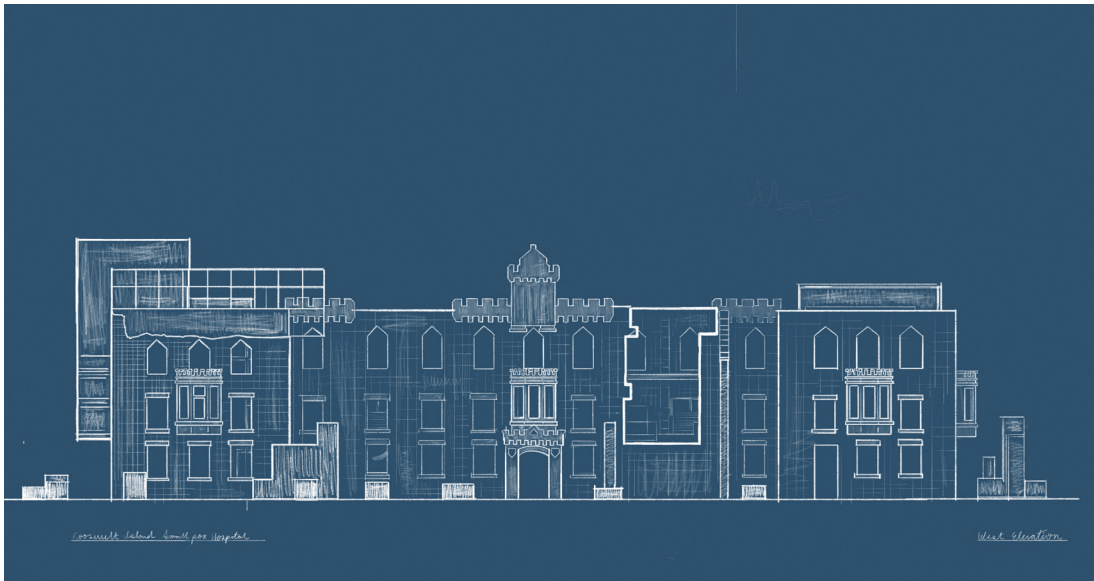


Twin Tubes is a two-seater metal bench that functions as a whole or separate parts. Inspired by typical urban forms and a doodle.

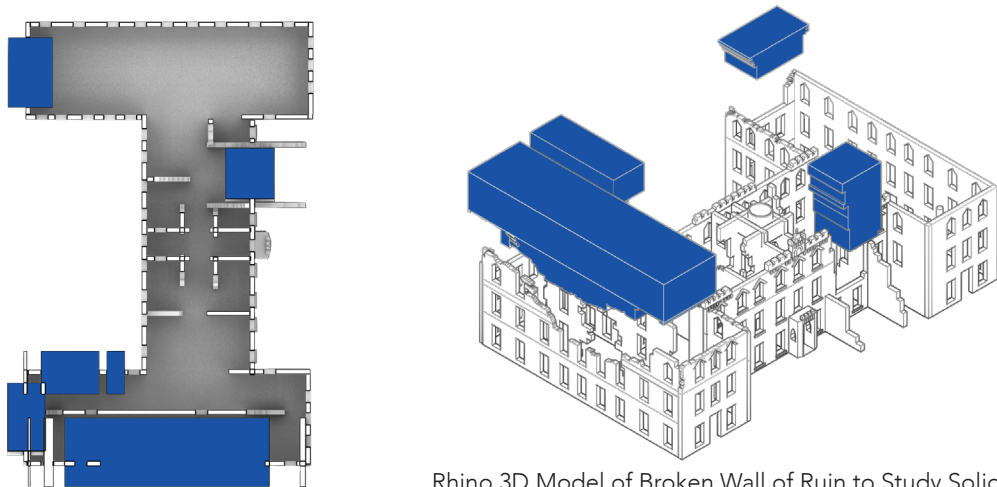
1 + 2 inch metal tubes welded together to create two seats
Legs were bent using the Hossfeld to create the 5" radius and 180 degree circumference.



CONTEXT + SITE: ROOSEVELT ISLAND SMALLPOX HOSPITAL



Sketch West Elevation of Final Proposal



Rhino 3D Model of Broken Wall of Ruin to Study Solids and Voids

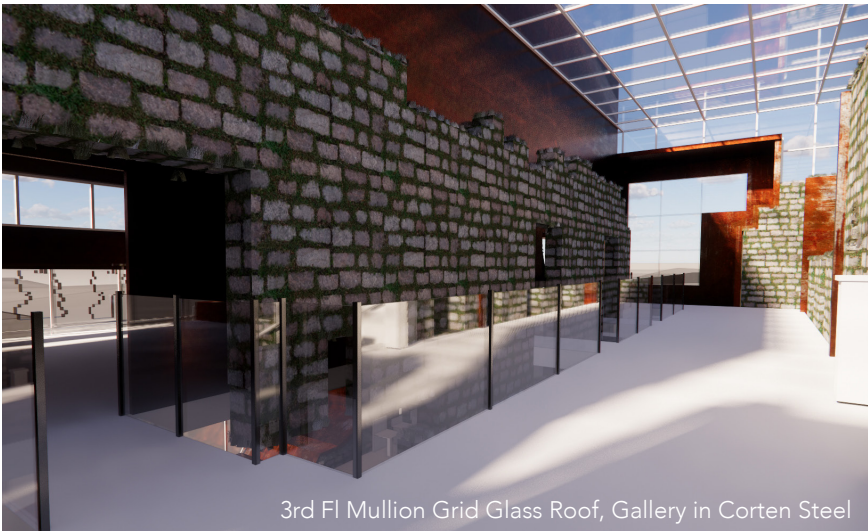


3D Map of Roosevelt Island and Site

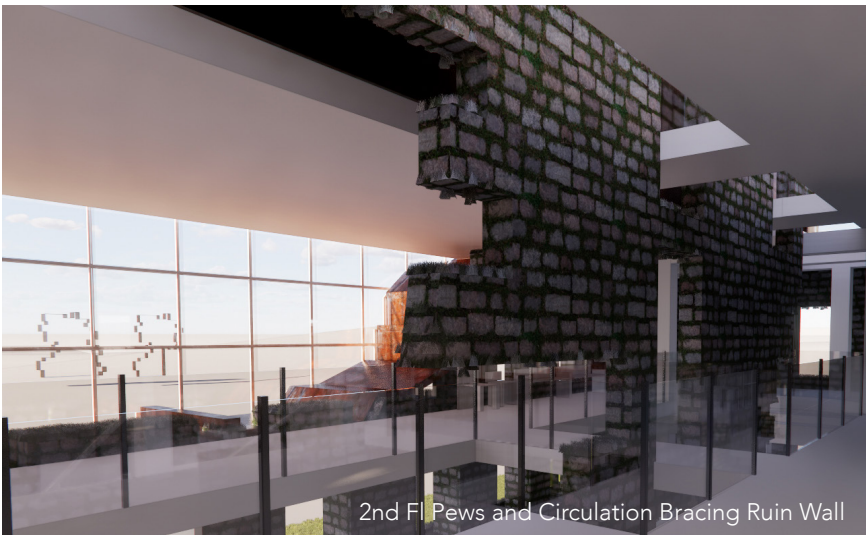


Image Edited of the Roosevelt Island Smallpox Hospital

RENDERED PERSPECTIVES AND PROPOSED INTERVENTIONS



3rd FI Mullion Grid Glass Roof, Gallery in Corten Steel



2nd FI Pews and Circulation Bracing Ruin Wall



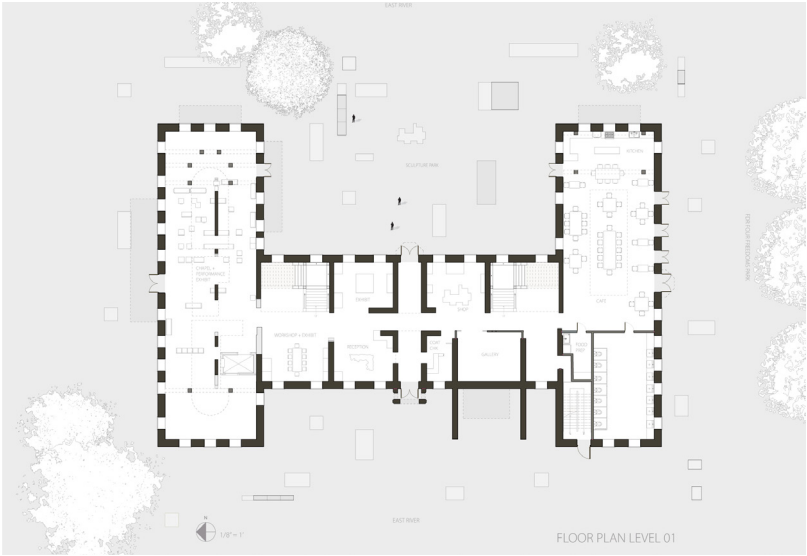
1st FI Chapel with Custom Pews Bracing Ruin Wall

CONCEPTUAL INFO: Using the metaphor of a puzzle, both literally and figuratively, it studies configuration, assembly, context, and journey through the making of scaled objects, interiors and landscapes that seek alternative languages to fill the voids. The interventions are knitted to create a topography of puzzle pieces that lead to unconventional connections.

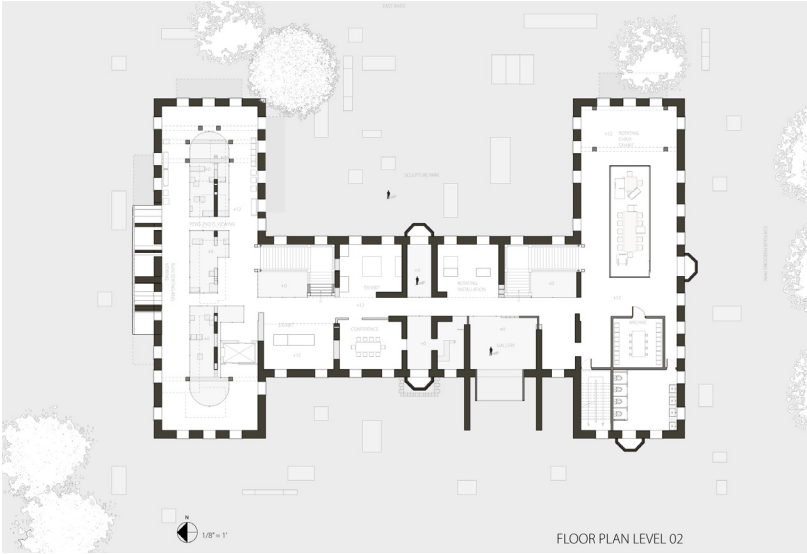
SITE: The Thesis proposes that the Roosevelt Island Smallpox Hospital be reimagined into a 3D sculpture park and chapel. The site is a ruin and is intended to be preserved as its current condition: a continued process of degradation. The architectural interventions interface with multiple built environments - the ruin, interior, exterior, structural support systems, integrated furniture and display mechanisms. Questioning the boundary of what is considered interior and exterior.

SOFTWARE USED:
Rhino
Enscape
Autocad
Adobe Creative Suite

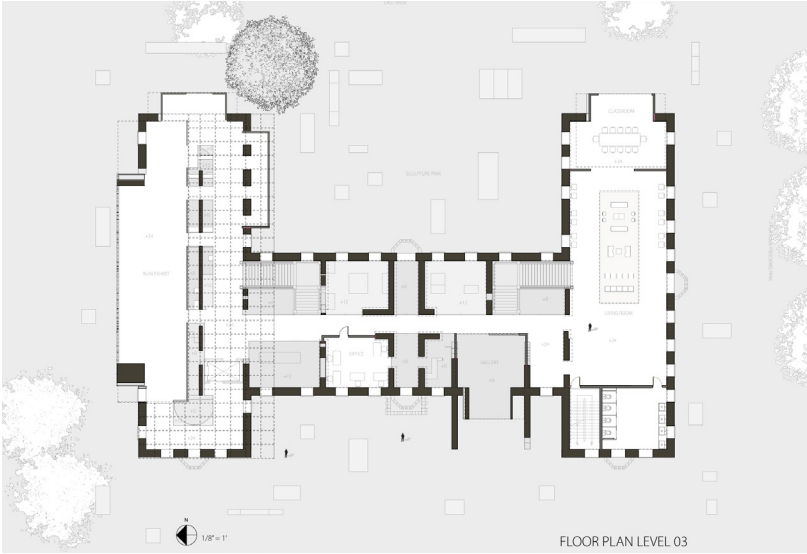
FLOOR PLANS



Level One

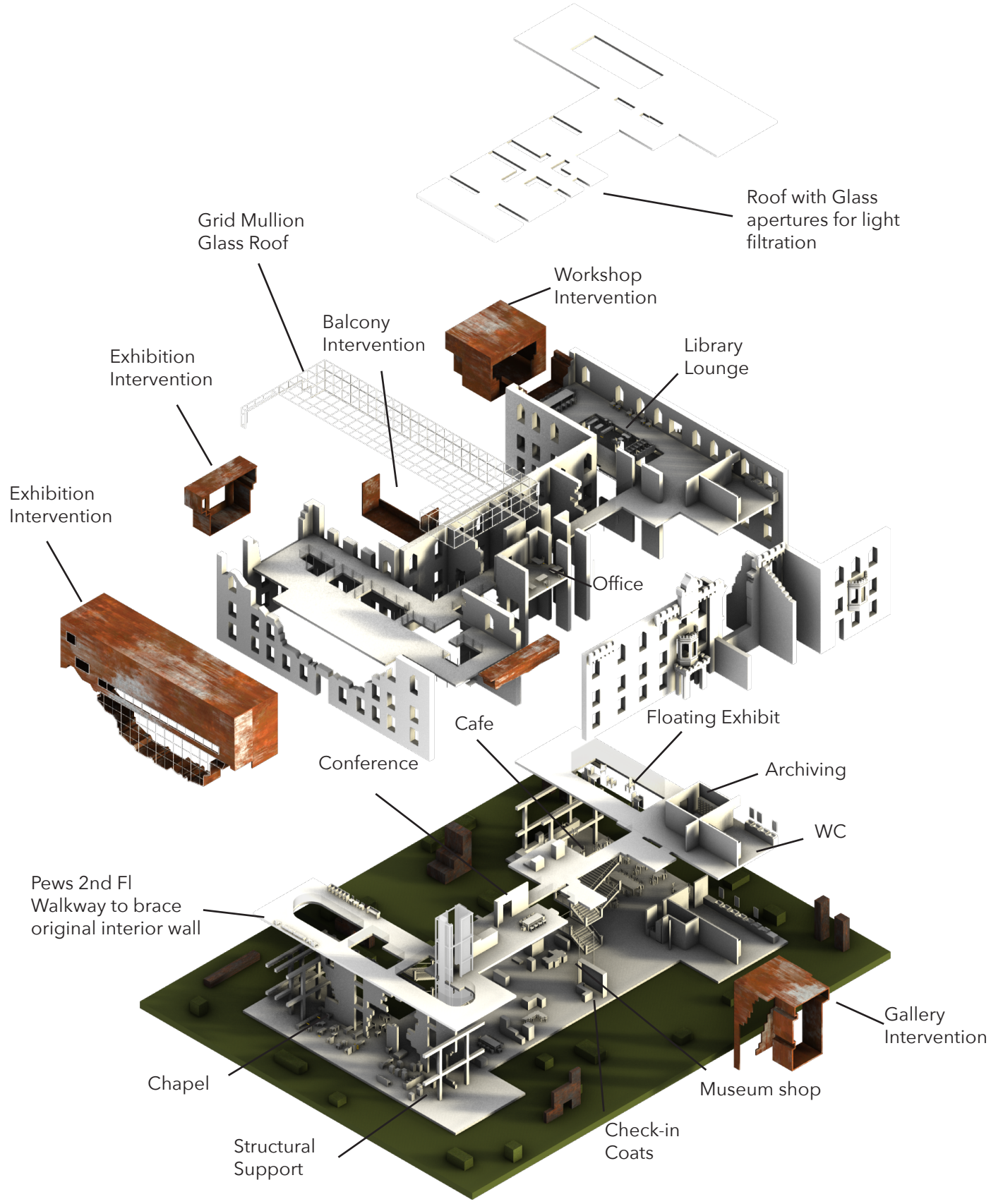


Level Two



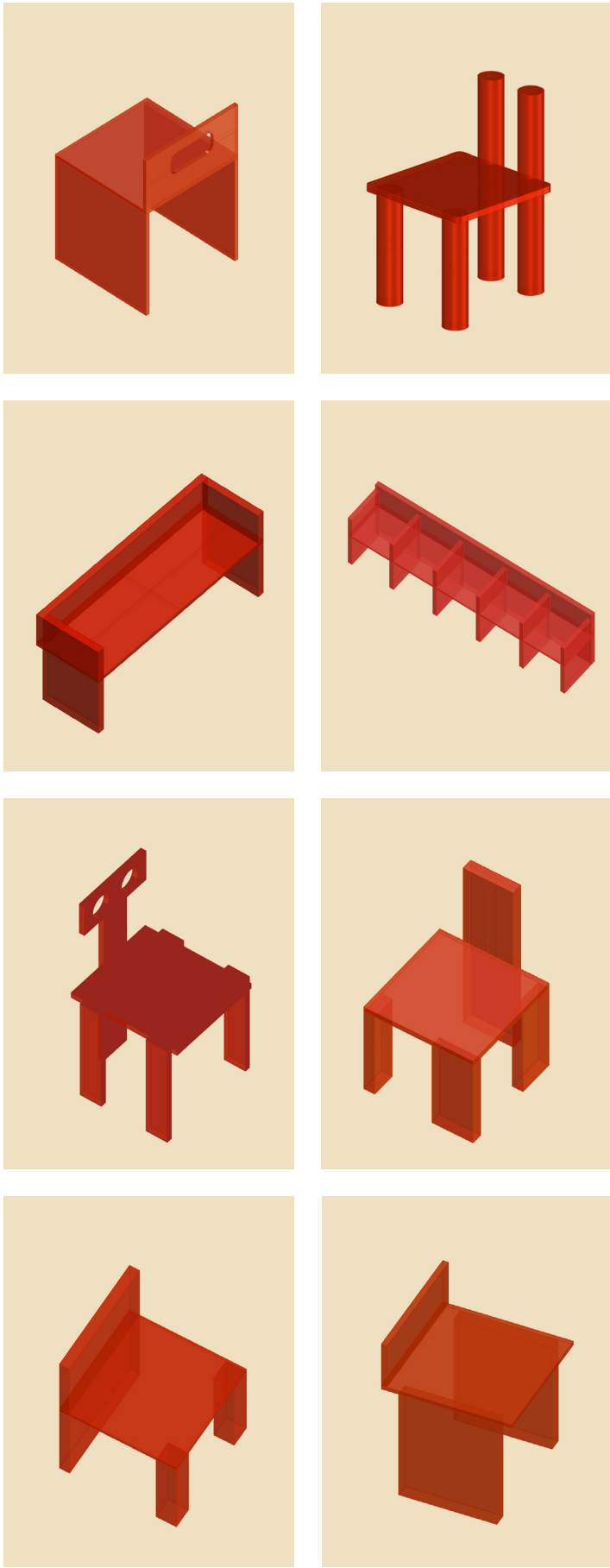
Level Three

RENDERED 3D MODEL WITH PROGRAM



Rendered Exploded Axonometric

FURNITURE DESIGN



Custom designed
furniture collection for all
programmatic spaces and
functions
Isometric Models

CONTEXT OF FURNITURE DESIGN IN PROGRAM



Seating in Cafe



2nd Fl Pews



1st Fl Pews



Seating in Classroom + Parlor



Seating + Table in Workshop

NOUR BANNOUT	
interior + furniture designer • creative producer • artist	
SKILLS	WORK EXPERIENCE
AUTOCAD REVIT RHINO ENSCAPE ADOBE CREATIVE SUITE CUSTOM FURNITURE + MILLWORK SPACE PLANNING PROJECT MANAGEMENT CONCEPT DEVELOPMENT, CONSULTING STYLING + INSTALL PROCURE FF&E + FURNITURE FLUENT IN SPANISH	FREELANCE INTERIOR DESIGNER + CREATIVE PRODUCER (NY, NY) July 2024 - Present <ul style="list-style-type: none">Develop schematic designs and 3D visualizations that clearly communicate concepts to clients and contractorsConduct site surveys, styling, and installation support to ensure cohesive design executionDesign and detail custom millwork and furniture tailored to project needsResearch, source, and procure FF&E, lighting, and finishes to align with budgets and aestheticsPresent design concepts, palettes, and furnishing selections to clients and teamsManage project budgets, timelines, deliveries, and installationsCoordinate with vendors, contractors, and clients to streamline workflow and resolve issuesArt direct for new furniture and product shoots, branding and content direction, production assist photoshoots with props and styling DESIGN ASSISTANT International Contemporary Furniture Fair (NY, NY) 2025 <ul style="list-style-type: none">Led exhibition design for 2,600 SF WANTED Design Schools Workshop, including floor planning, production management, sponsor engagement, and installation oversightCross-Functional project managementSupported design initiatives across ICFF/WANTED platforms, including marketing collateral and exhibitor promotion WOODWORKING INTERNSHIP Sawtooth School for Visual Arts (Winston Salem, NC) SU2023 <ul style="list-style-type: none">Awarded an independent study opportunity and recipient of the Graduate Student Engagement Fund to study Moravian craftsmanship and Southern Decorative ArtsFabricated and installed custom cabinetry, applying Moravian woodworking techniques to blend traditional craftsmanship with contemporary needs DIGITAL MARKETING ACCOUNT MANAGER, SPECIAL PROJECTS LEASING COORDINATOR Rose Associates (NY, NY) 2018 - 2021, 2016 - 2018 <ul style="list-style-type: none">Executed marketing strategy for 27+ luxury residential properties, acheiving occupancy and revenue goals.Managed cross-functional projects, coordinating stakeholders, designers, and marketing teams to meet tight deadlinesPitched creative campaign strategies and presented performance analytics to clients and executivesLed rebranding initiatives to enhance visibility and align with market trendsDeveloped brand identity and digital media presence across multiple propertiesArt directed photoshoots and curated content for marketing and leasing campaignsDesigned and styled model apartments, sourcing furnishings to reflect target demographics and influenced leasing success
EDUCATION	
MFA INTERIOR DESIGN PRATT INSTITUTE 2021 - 2024 Focus: Furniture Design, Adaptive Reuse, Sculpture, Artifacts, Belonging	
EXHIBITIONS + RECOGNITION: "Post-Colonial Silla" at Pratt's Myrtle Gallery Maquettes archived for Pratt's Thesis collections	
BA INTERNATIONAL GLOBAL STUDIES UNC GREENSBORO 2010 - 2014	
GLOBAL STUDIES + DESIGN EXCHANGE	
ADAPTIVE REUSE PORTO, PORTUGAL - 2023	
FURNITURE DESIGN DIS COPENHAGEN - 2022	
POLITICAL SCIENCE UNIVERSITY OF COPENHAGEN - 2013	
INTERNATIONAL BUSINESS UNIVERSITE JEAN MOULIN LYON - 2012	
CONTINUING EDUCATION	
GRAPHIC DESIGN FOUNDATIONS PRATT INSTITUTE - 2019	
ART OF DESIGN SCHOOL OF VISUAL ARTS - 2017	
ILLUSTRATION PORTFOLIO SCHOOL OF VISUAL ARTS - 2017	
CONTACT	
919-357-4638 nibannout@gmail.com nourbannout.com portfolio link	



THANK YOU FOR VIEWING.