



Felipe Colina



Portfolio

TABLE OF CONTENTS

STATEMENT

2-D WORK

- Bargue Drawings
- Master Copies
- Selected Paintings

DESIGN

- The Eternal Flame with Welcoming Arms
- SCRAP: Interior Space Reconfiguration
- Newcomb Community Landscape

BIO

STATEMENT

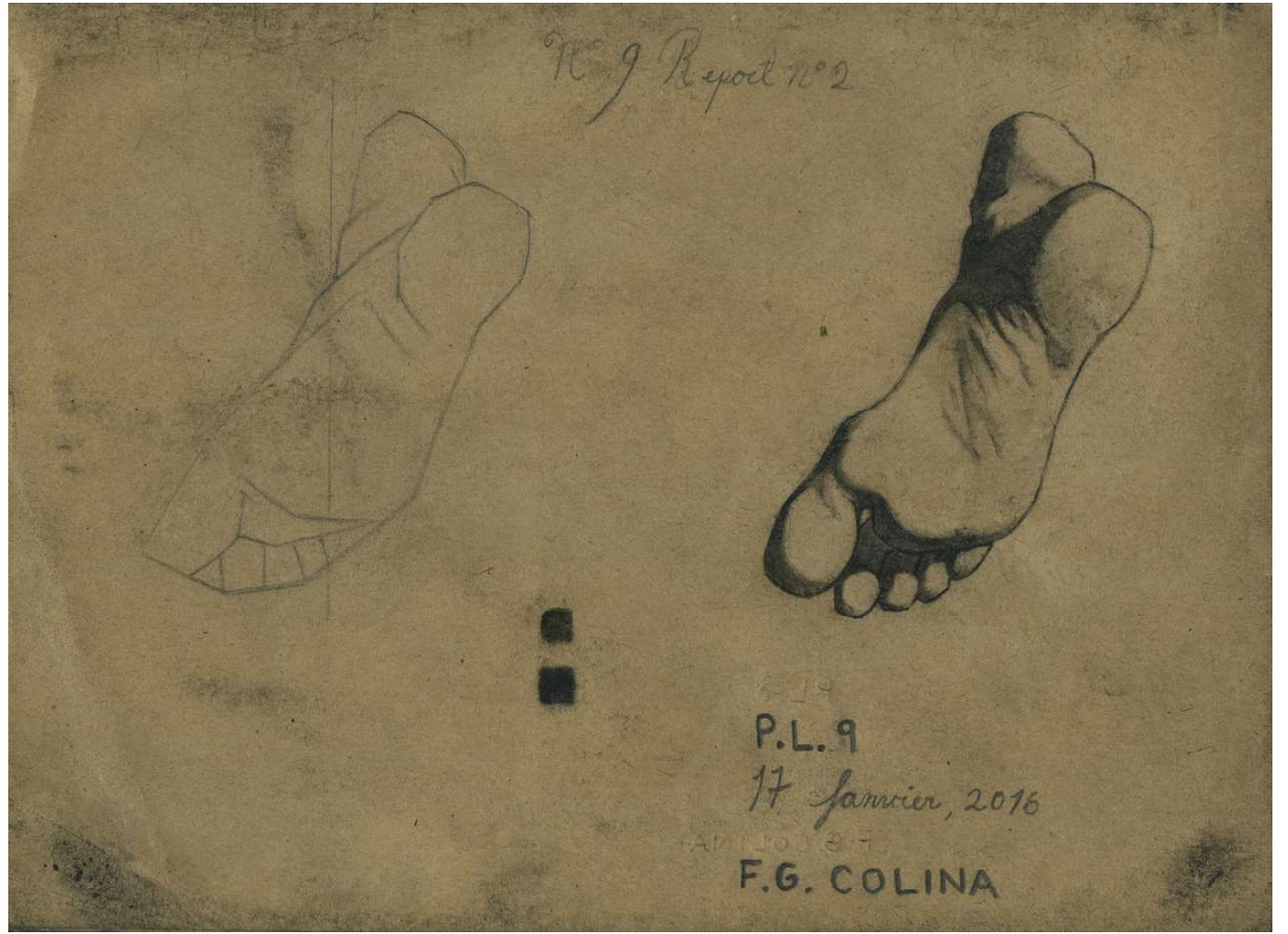
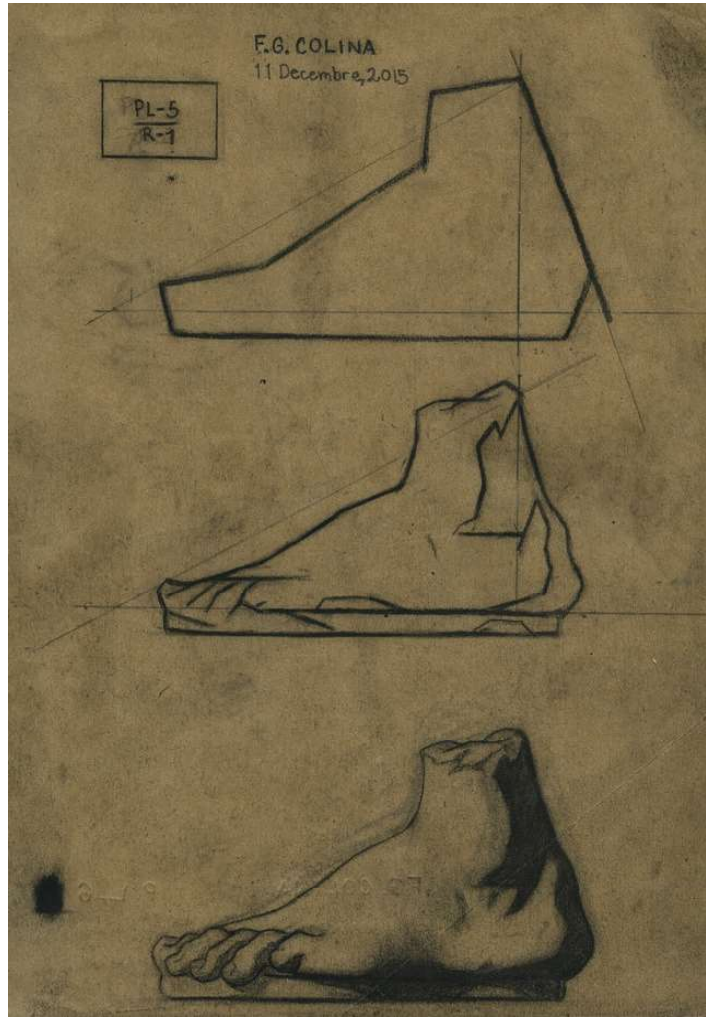
My art practice is an ongoing learning process through drawing, painting, and design with the ultimate goal of building public architectural projects with positive social impact.

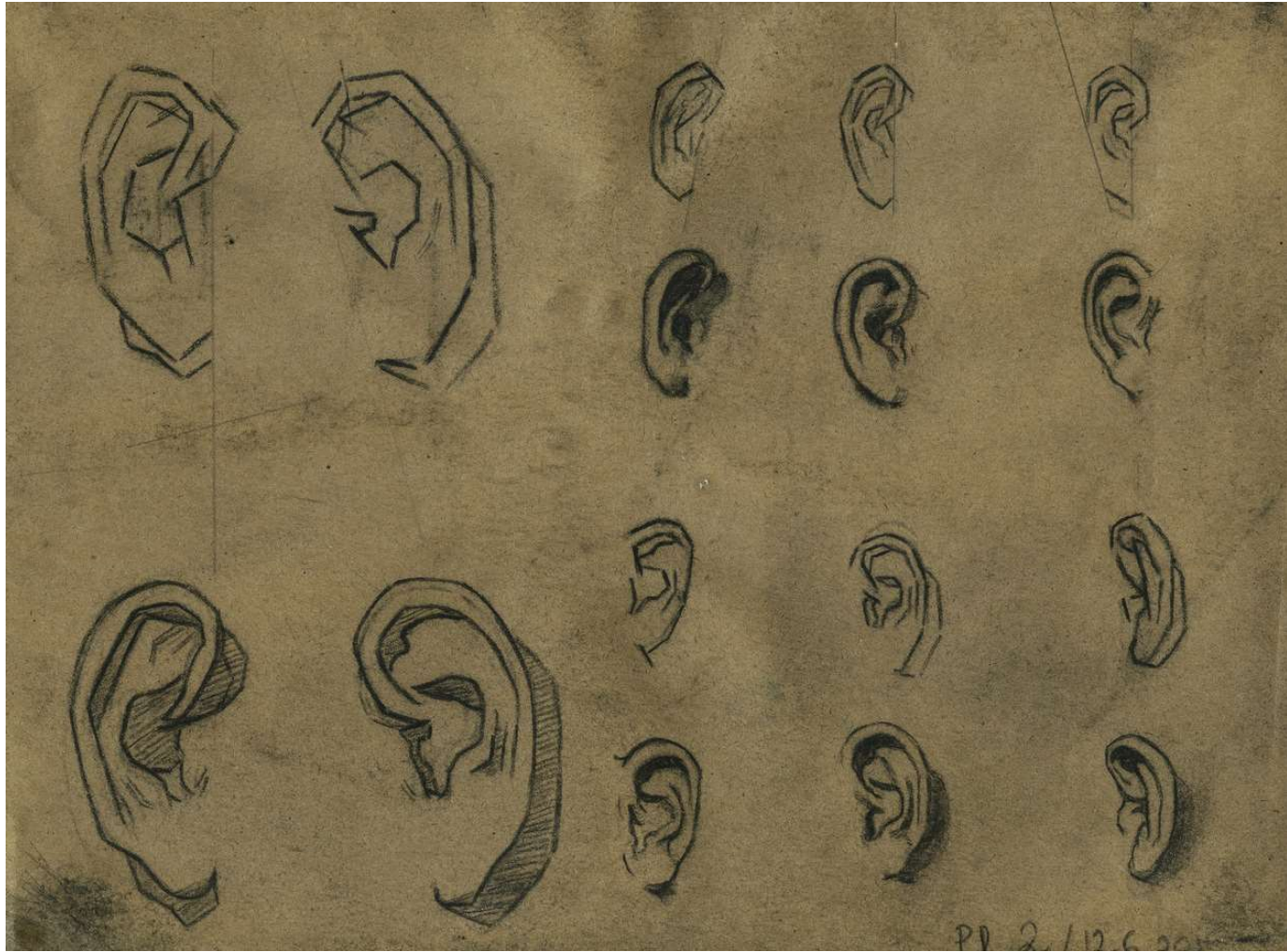
My interest in architecture started with drawing and painting. I taught myself how to draw guided primarily by the letters of Vincent Van Gogh and the work of the Old Masters. Through drawing, I developed an interest in the built environment. I am interested in the work of Francis Keré, Tadao Ando, and B.V. Doshi. Their works combine social commitment, simplicity and functionality.

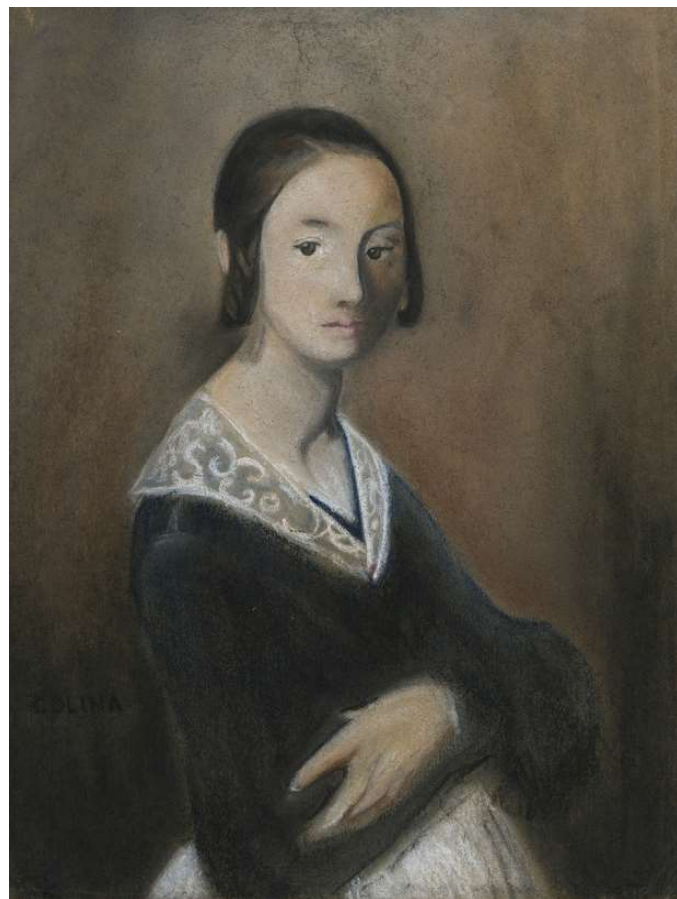
I am interested in taking ideas from thought to design to reality. To that end, I seek to participate in all phases of a creative project: ideation, planning and on-site execution. I am interested in various materials and design philosophies as they fit the circumstances and resources of the project.

My ultimate objective is to design and build public spaces with a particular interest in public sustainable architecture. As an immigrant from Venezuela, I witnessed the consequences of lack of housing and urban planning. Through my work, I seek to imagine and materialize new visions for developing communities.

2-D WORK







Copy of Jean-Francois Millet's Portrait of Louise-Antoinette Feuardent,
2016, pastel on toned paper, 8.5 x 11 in.



Copy of Rembrandt's Head of an Old Man,
2016, pastel on paper, 8.5 x 11 in.



Copy of Van Gogh's On the Road to Tarrascon,
2016, pencil on paper, 8.5 x 11 in.



Copy of Bust of Venus,
2016, pen on paper, 8.5 x 11 in.



View of San Francisco from Twin Peaks, 2022, oil on canvas, 48 x 24 in.



View from Base of Coit Tower, 2018, oil on canvas, 8 x 10 in.

THE ETERNAL FLAME WITH WELCOMING ARMS

Concept Design Proposal
Miami, Florida
2022

*El tiempo se va grano a grano
cada grano que fue
Es fue, será y fue otra vez*

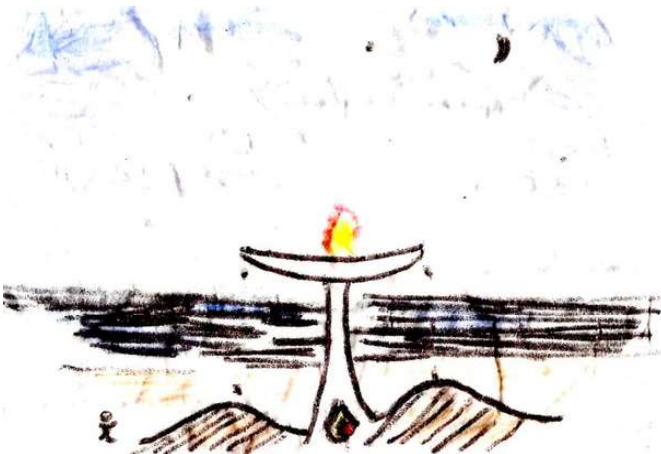
*En el sedimento de lo que fue
encontramos lo que es el hogar*

*El viento mueve la tierra
y al otro lado del sedimento
encontramos la protección del fuego*

Las Arenas del Tiempo

The Eternal Flame with Welcoming Arms is a concept design proposal submission for the 2022 Faena Arts Prize. The open call prompted artists to develop a monumental installation at Miami Beach to answer the question of how public art can generate a sense of belonging.

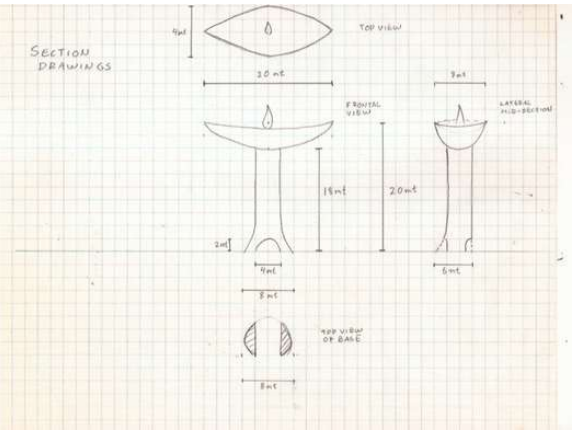
I started by writing a simple poem about the fundamental mechanisms of nature and human feelings of protection. From this poem, fire became a symbol for belonging and the strength of the human spirit.



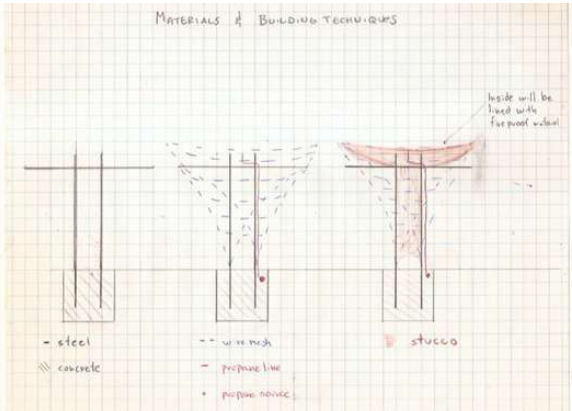
Initial Concept Design

As a Venezuelan immigrant, the question of belonging is extremely meaningful. I am eternally grateful to the United States for being a refuge to my family. I wanted to honor Miami's legacy as a multicultural city that embraces generations of immigrants to this country.

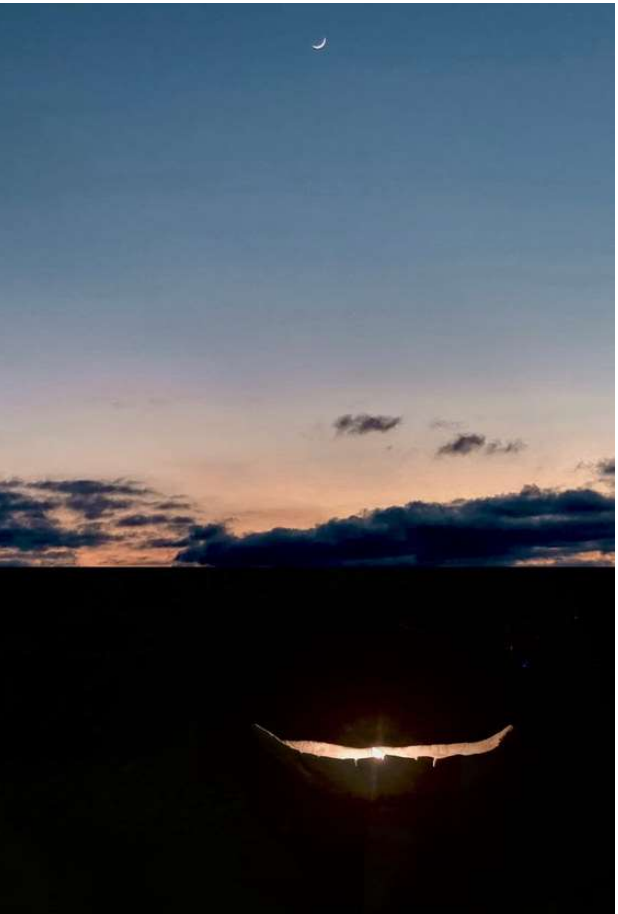
The figure of the chalice holding a lit flame emerged as a symbol of welcoming open arms shining a light for all those who brave darkness in search of a new home and a bright future.



Section Drawings



Materials and Building Techniques



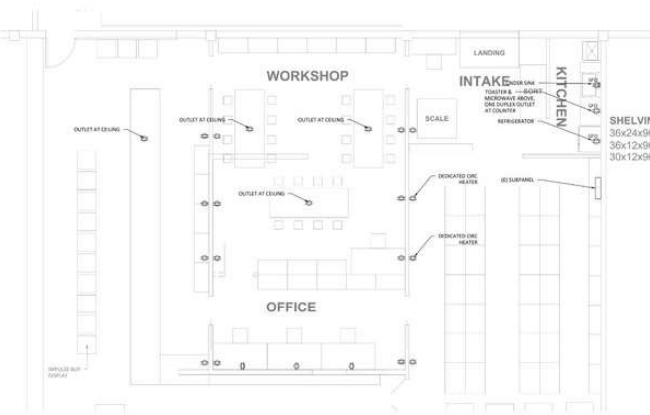
Final Rendering

SCRAP: INTERIOR SPACE RECONFIGURATION

Design Revision and Project Management
San Francisco, California
2021 - 2022

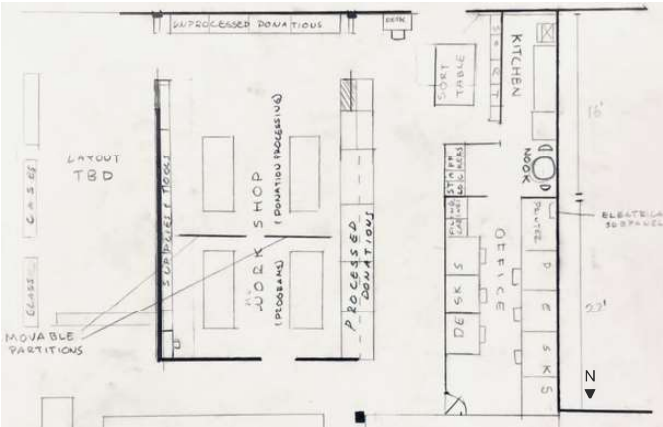
SCRAP is a long-standing arts and education non-profit organization that distributes donations of art materials and hosts arts education programming for the community.

In 2021, the San Francisco Arts Commission (SFAC) awarded SCRAP a grant to support an interior space reconfiguration project. The goals were: (1) extensive electrical rewiring and (2) repositioning of interior partitions to increase the size of our workshop and office space, and improve the flow of donated materials to the retail floor.



Initial Proposed Design by third party architects
Exceeded budget and did not meet organizational goals.

Third party architects delivered a proposed design but the electrical work plan exceeded the budget. Furthermore, the design limited office space to only three workstations, and had a large storage space inviting further material accumulation and clutter.



Built Revised Design by Felipe Colina
Met budget and organizational goals.

My design revision situated the office along the west wall to make use of existing outlets that were not considered in the initial proposed design. By doing so, we significantly reduced costs, increased office space to fit five workstations, and added an intake corridor to streamline donation flow.

Under my supervision, the revised design was built and completed on time and on budget.



SCRAP Interior Space Reconfiguration, 2023.
(Left) Depot Manager, William Barros works with neurodivergent students in new workshop.
(Right) Inventory Manager, Lisa Ryan organizes donations in new intake corridor.

NEWCOMB COMMUNITY LANDSCAPE

Concept Design, Project Management and Hands-On Execution
San Francisco, California
2023



BEFORE

Newcomb Ave littered with illegal waste, April 2023.

Newcomb Avenue is located in San Francisco's Bayview Industrial District. The section between Toland St. and Selby St. is unclaimed by the city and there is no street cleaning. For years, it has been a "hot spot" for illegal dumping of waste.

To address the issue, I took the initiative of landscaping the area. The full scope of the project encompasses a garden, a dry set brick patio, and an elevated terrace. The project is ongoing and set to be completed in December 2023.



NOW

Landscape has deterred illegal waste, November 2023.

The results have been extremely encouraging. The project has significantly reduced illegal dumping and inspired positive change. Succulents have been planted overnight by community neighbors and individuals have inquired how they can start their own community garden.

Thanks to the use of salvaged materials (wood and cinder blocks), free community resources (compost and mulch) and individual donations (dirt, plants, tools) the cost has been less than \$100.



Newcomb Community Landscape, Concept Design, 2023.

I am extremely thankful for the support the project has earned. My sincerest gratitude to Katherine Loehr, Praneeth Mandavilli, Larry Winum, Nick Watzke, Richard Tirtoprodjo, Timothy Jones, "Ronnie", SCRAP, Bayview Green Waste, Building Resources and Recology SF.

BIO

Felipe Colina is a multi-disciplinary artist and community leader. He was born in Maracaibo, Venezuela and currently lives in Redwood City, CA.

Inspired by his father's philosophy of architecture and his mother's kindness, Felipe discovered in art a means of individual exploration and service to the community. He currently works as the Director of Operations at SCRAP, a long-standing arts and education non-profit organization in San Francisco, where he marries his passion for art and social impact.

He has ten years of management experience in tech, restaurant and non-profit industries. His artistic work has been shown in galleries in the Bay Area. Felipe holds a B.A. in Mathematics and History from Williams College.

Felipe's goal is to combine his academic background, management experience and artistic skills to develop and execute architectural projects that address pressing social and environmental issues. Felipe is currently studying at the College of San Mateo, expecting to obtain his Associate Degree in Architecture in Fall 2024.

CONTACT

Felipe Colina
312.662.8282
felipegcolina@gmail.com