

Flynn and artists: Selection of works realised for the Australian public realm

Barbara Flynn Pty Ltd

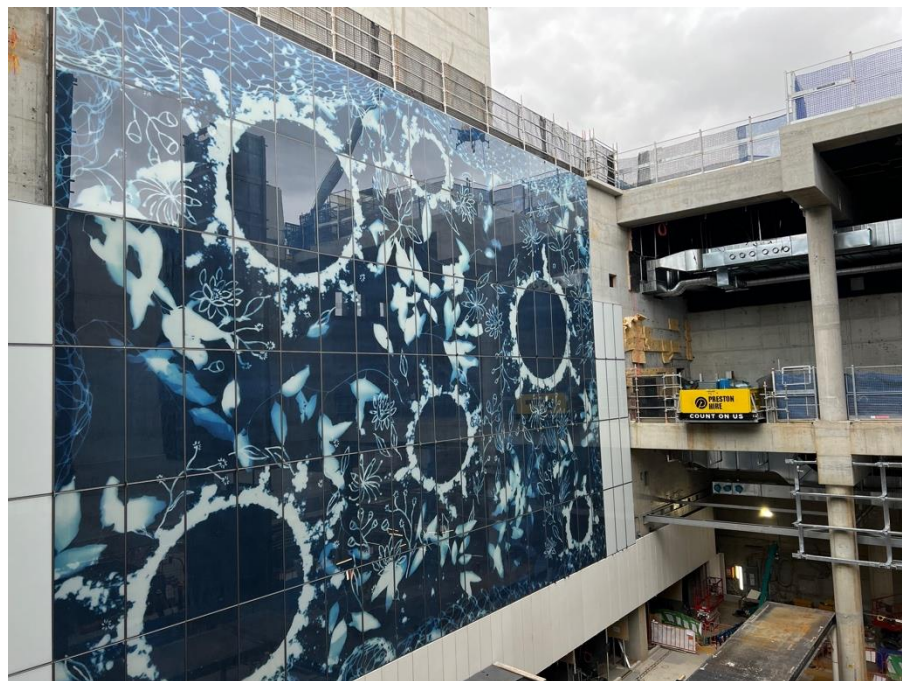
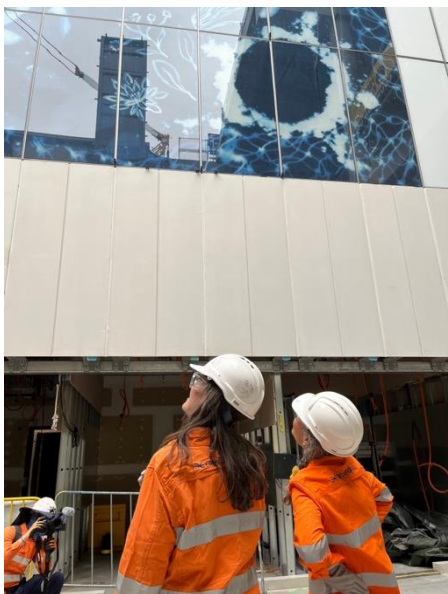
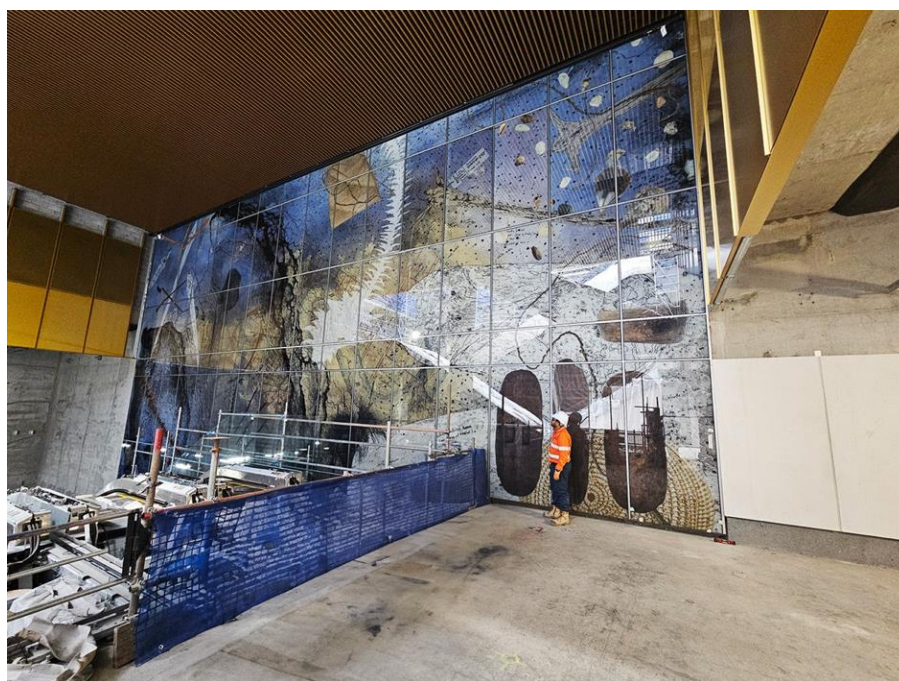
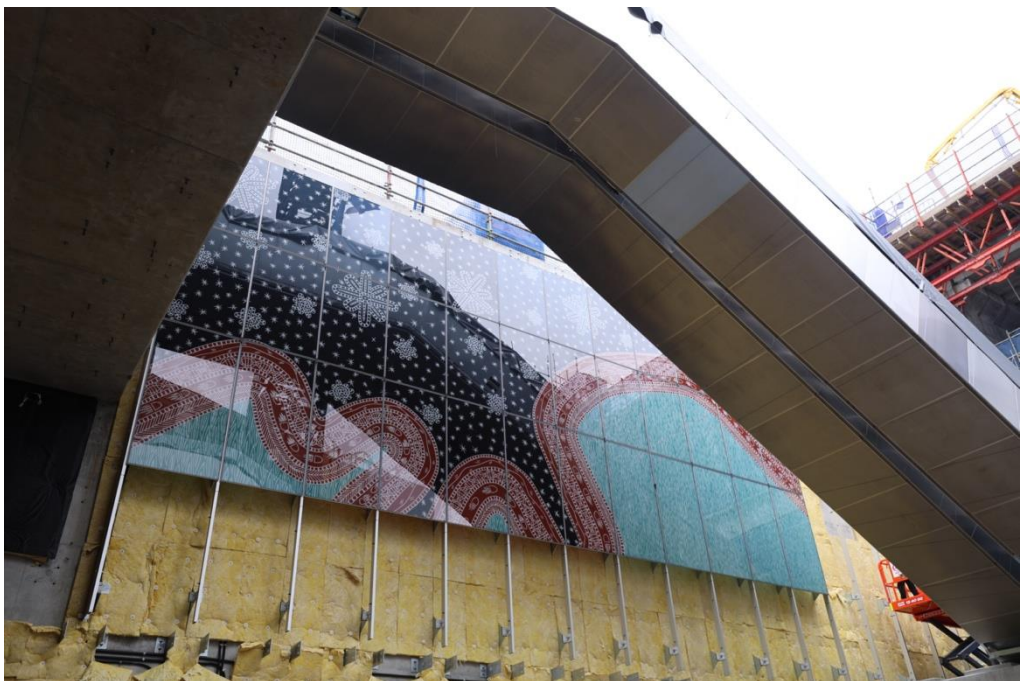
Concepts copyright Barbara Flynn 2026
Images copyright the artist 2026.

The images in this presentation are drawn from the slide archive of Barbara Flynn and are covered by Flynn's copyright.

They are for internal use for the purpose of these discussions only.

January 2026

Not for replication or distribution.



VT shaft glazed wall artworks under construction for Cross River Rail, Brisbane

Photographic reproductions interlayered in glass, for completion 2025 (stations to open 2026)

Clockwise from top left:

Teho Ropeyarn

Ataga Ulumu (Red clay/road)

Boggo Road Station, east wall

Judy Watson

Roma Street Station

Elisa Jane Carmichael

plants, waters, gathering time

Woolloongabba Station

Far left: Carmichael with Barbara Flynn

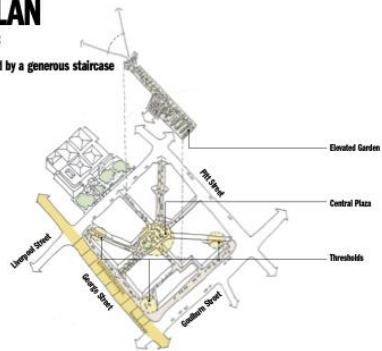
Commissioner: Cross River Rail and Rail Integration and Systems, Brisbane

Architects: Hassell

Project curator: Barbara Flynn, Curatorial Advisor to Cross River Rail and Rail, Integration and Systems

MASTERPLAN

- Two distinctive experiences;
1. Public plaza
2. An elevated garden linked by a generous staircase



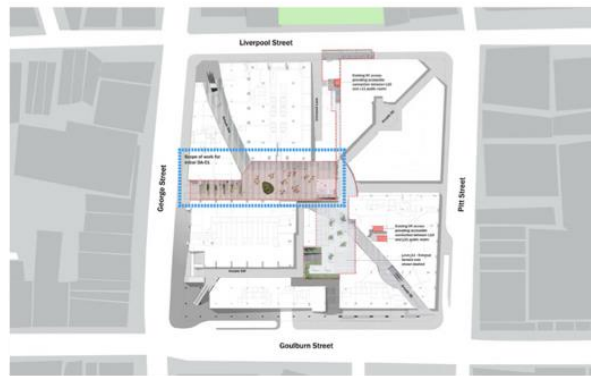
Central plaza and elevated garden
Image: Hassell presentation, April 2021, slide 4

PUBLIC REALM



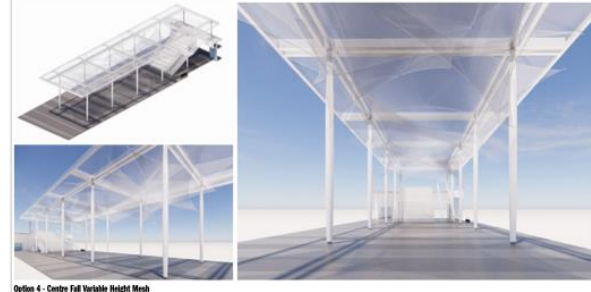
World Square public realm
Image: Hassell presentation, April 2021, slide 8

6



Site plan showing scope of work
Image: Hassell Draft Stage 2 DA WIP, 21 December 2022, slide 5

INDICATIVE ARTWORK



Option 4 - Centre Full Variable Height Mesh

Indicative artwork
Image: Hassell Canopy Study PowerPoint, 7 December 2022, slide 6

7

FLYNN



Spencer Finch

Protective 'veil' structure with mesh artwork as its lower layers
Steel and stainless steel
9m (height)
Central Plaza, World Square, Sydney

Left:

Pages excerpted from Barbara Flynn, *Detailed Public Art Plan* submitted to City of Sydney, February 2023

Right:

Prototype produced by Icon Metal and erected in Icon factory yard, Silverwater NSW, 24 June 2024

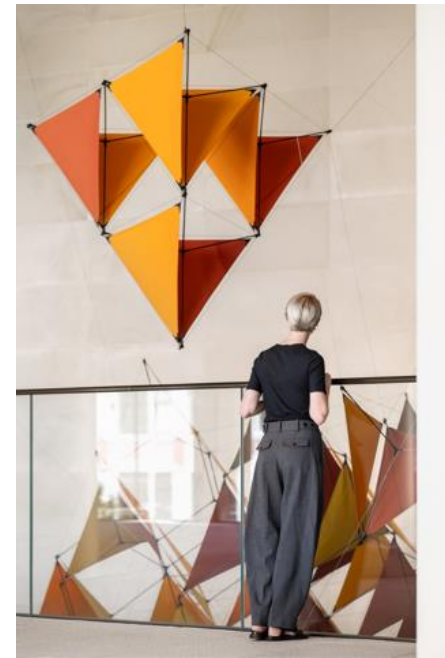
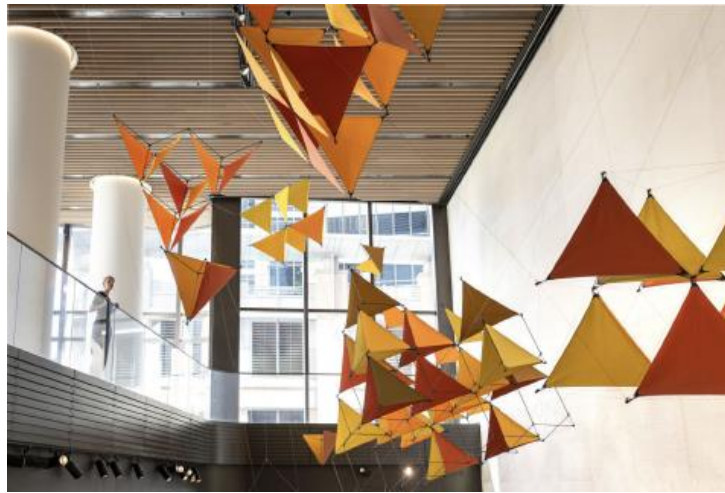
Commissioner: ISPT

Architects: Hassell

Project curator: Barbara Flynn, Art Advisor to ISPT

Photo at right: Barbara Flynn

FLYNN



Tomás Saraceno

The Seeds of Flight, 2025

Extra dense, dyed raw cotton fabric, carbon fibre,
aluminium, rope, sailcloth

15 sculptures of variable dimensions installed on the three
public levels of Parkline Place, 252 Pitt Street Sydney

Project developed by Investa on behalf of owners, Oxford
Properties Group and Mitsubishi Estate Asia

Architects: Foster + Partners

Project curator: Barbara Flynn, Art Advisor to Investa for
Parkline Place



Tomás Saraceno

The Seeds of Flight, 2025

Extra dense, dyed raw cotton fabric, carbon fibre, aluminium, rope, sailcloth

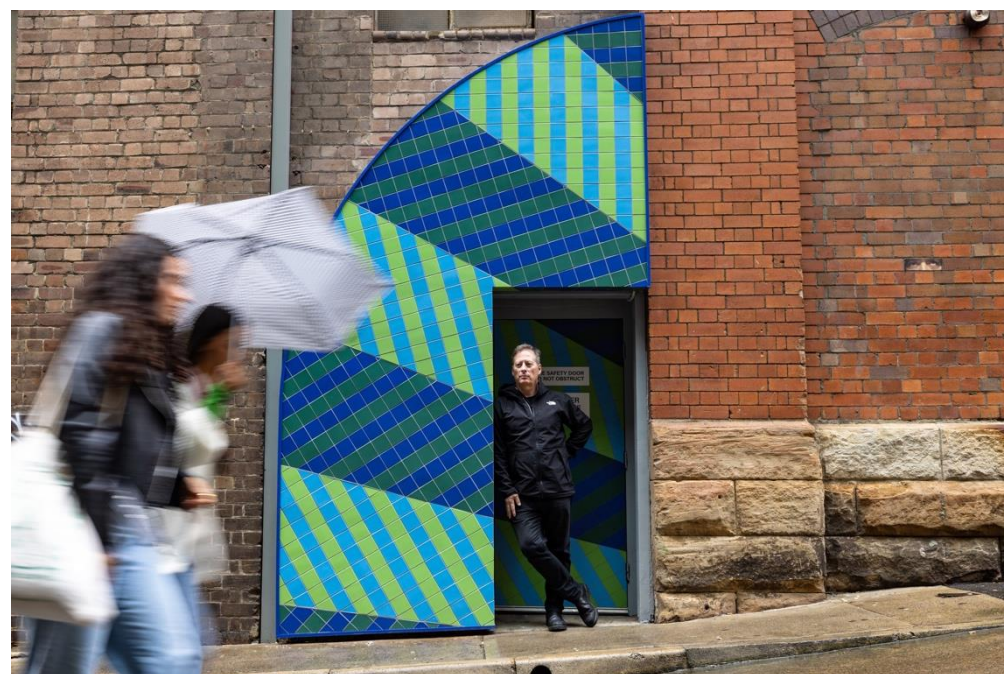
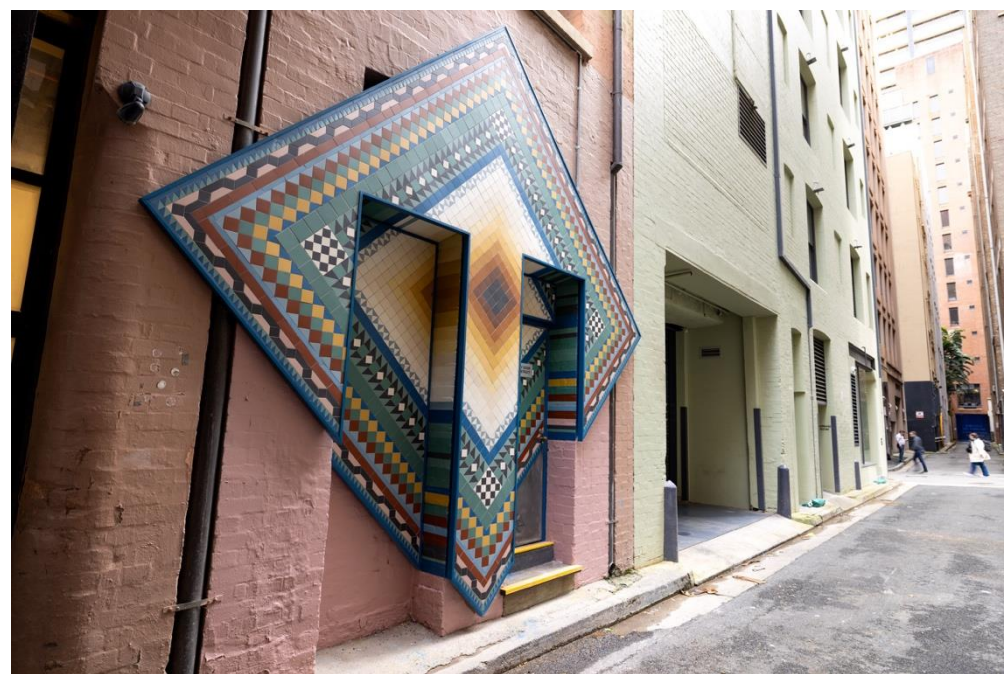
15 sculptures of variable dimensions installed on the three public levels of Parkline Place, 252 Pitt Street Sydney
Commissioners: Oxford Properties Group, Mitsubishi Estate Asia (MEA), and Investa

Architects: Foster + Partners

Project curator: Barbara Flynn, Art Advisor to Investa for Parkline Place

These views: Rigging the cotton sails in preparation for installation on site, 6 January-12 February 2025

Photos: Mark Pokorny



Callum Morton

In Through the Out Door, 2024

Mullins Street and Market Row, Sydney

Clockwise from top left:

Doors 1, 2 and 3

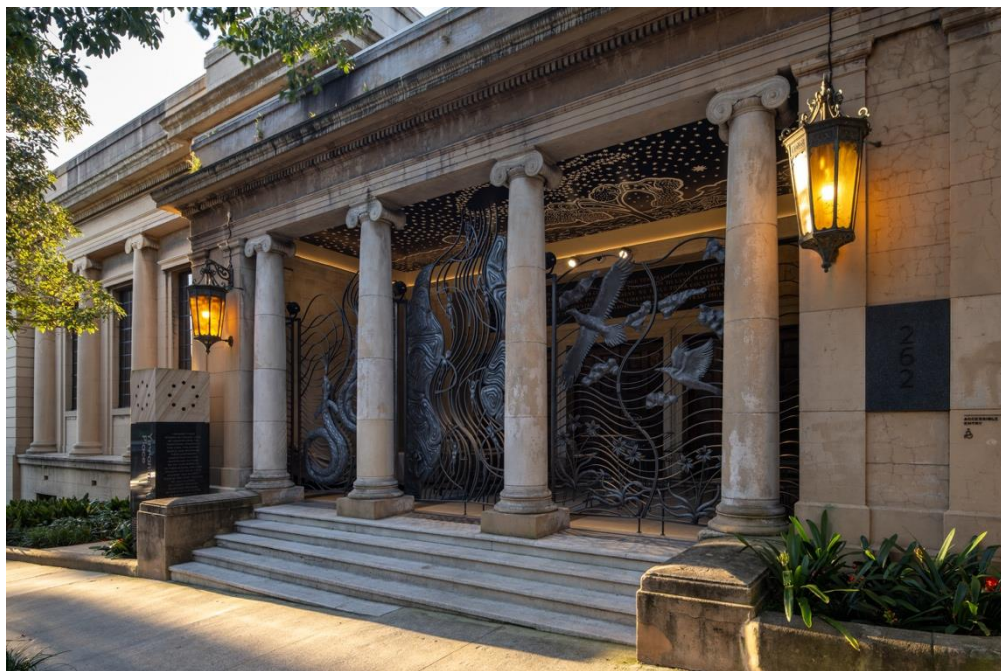
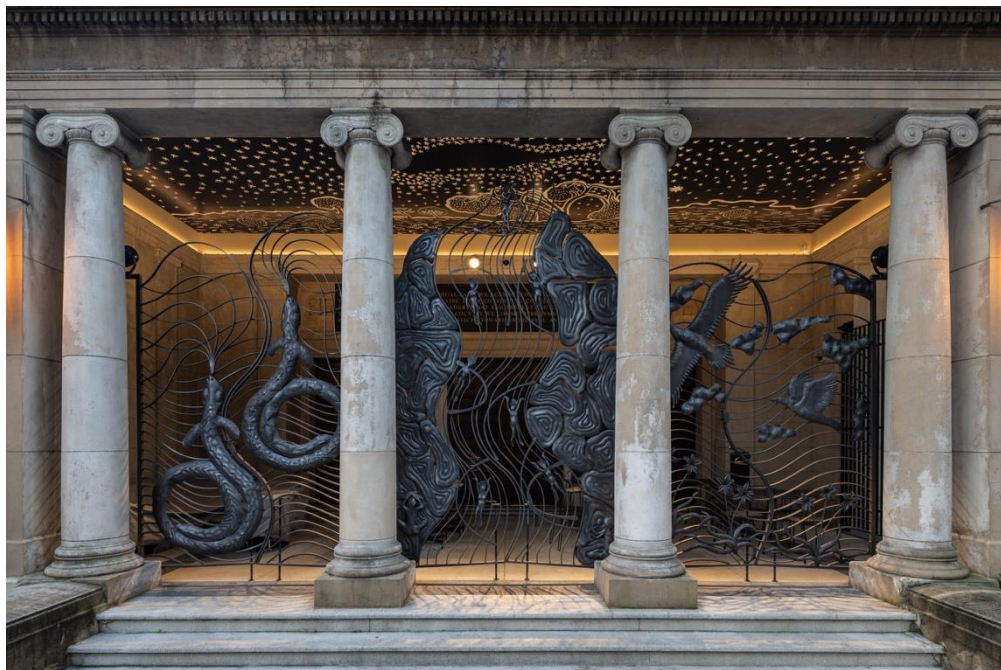
Bottom: Artist Morton in Door 3

Commissioner: City of Sydney

Project curator: Barbara Flynn, Curatorial Advisor, City Centre, City of Sydney

Photos, Doors 1 and 2: Phoebe Pratt/City of Sydney

Photo of Morton, Door 3: Chris Southwood/City of Sydney



William Brian ‘Badger’ Bates

Sharing Barkandji stories of land, water and sky, 2022

Forged steel gates and ceiling painting

Gates: 3 x 10.75m; Ceiling painting: 4.45 x 10.75m

Paul Ramsay Foundation (PRF) Sydney headquarters,

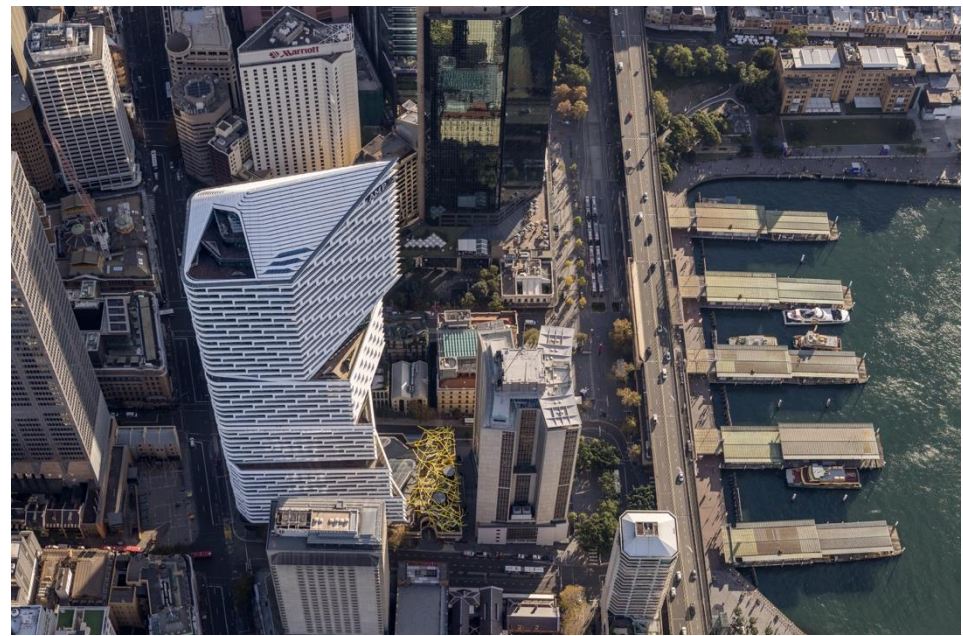
Yirranma Place, 262 Liverpool Street, Darlinghurst

Commissioner: PRF

Architects: SJB

Project curator: Barbara Flynn, Art Advisor to PRF

Photos: Mark Pokomy



Olafur Eliasson

Rooffor stray thoughts, 2022

Painted hollow steel and marine-grade stainless steel
5 x 55 x 30m

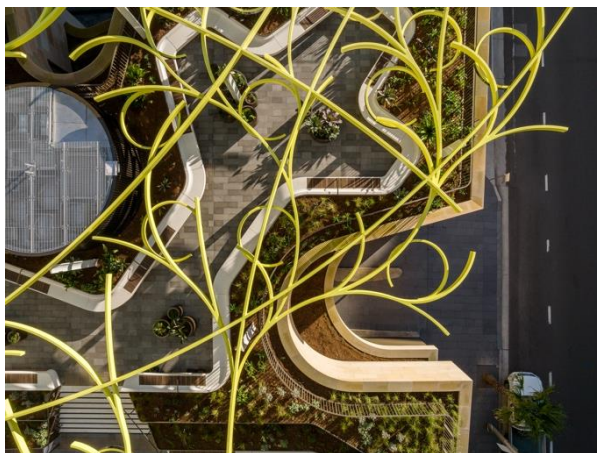
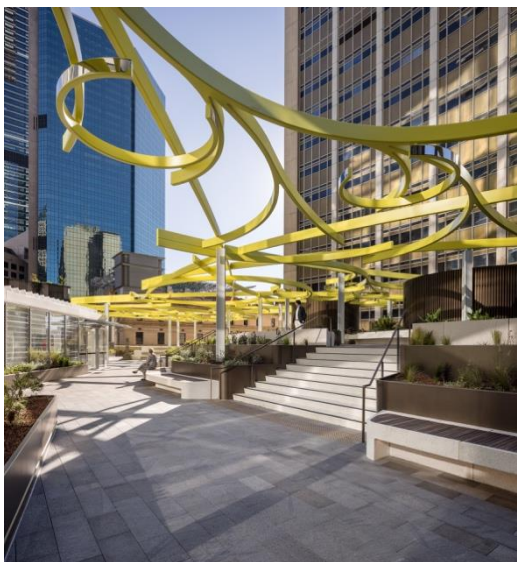
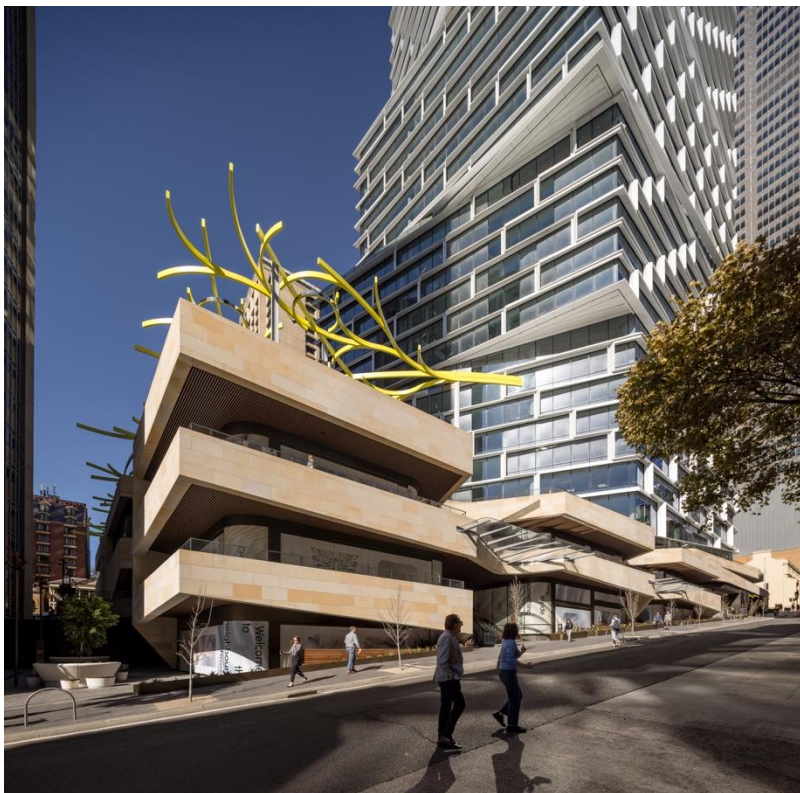
Quay Quarter Tower, Sydney

Commissioner: AMP Capital

Architects: 3XN

Project curator: Barbara Flynn, Art Advisor to AMP Capital for
Quay Quarter Sydney

Photos: Adam Mork



Olafur Eliasson

Rooff for stray thoughts, 2022

Painted hollow steel and marine-grade stainless steel
5 x 55 x 30m

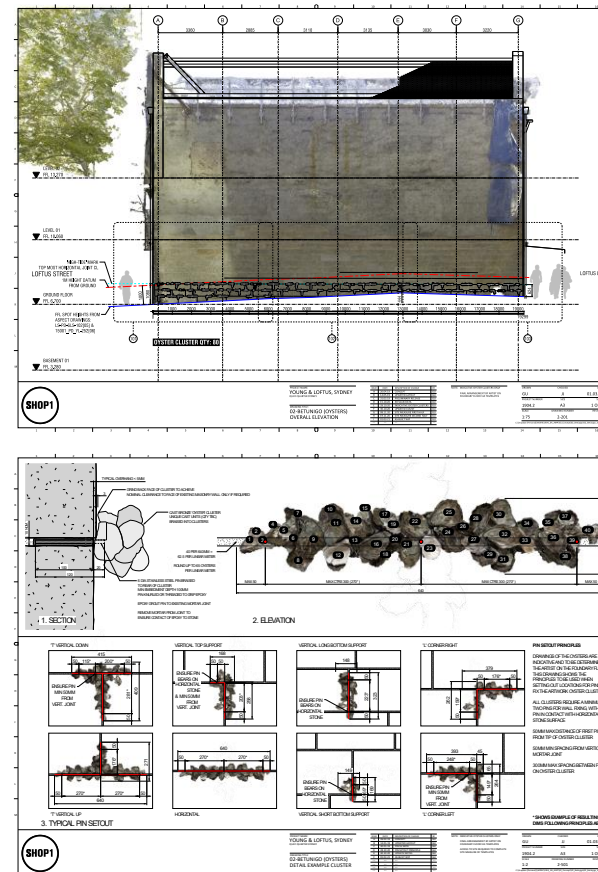
Quay Quarter Tower, Sydney

Commissioner: AMP Capital

Architects: 3XN

Project curator: Barbara Flynn, Art Advisor to AMP Capital for Quay Quarter Sydney

Photos: Adam Mork



Jonathan Jones

remembering Arabanoo: betünigo (oysters), 2022 (details, elevation and structural drawings)

Bronze (lost-wax technique)

3500 individual oysters, welded together into approximately 60 clusters

Each cluster: 13.2cm (height) x 64cm (length)

Affixed to southern wall of Gallipoli Memorial Club at height of 1m off the ground to approximate the high-tide mark of nearby Sydney Harbour

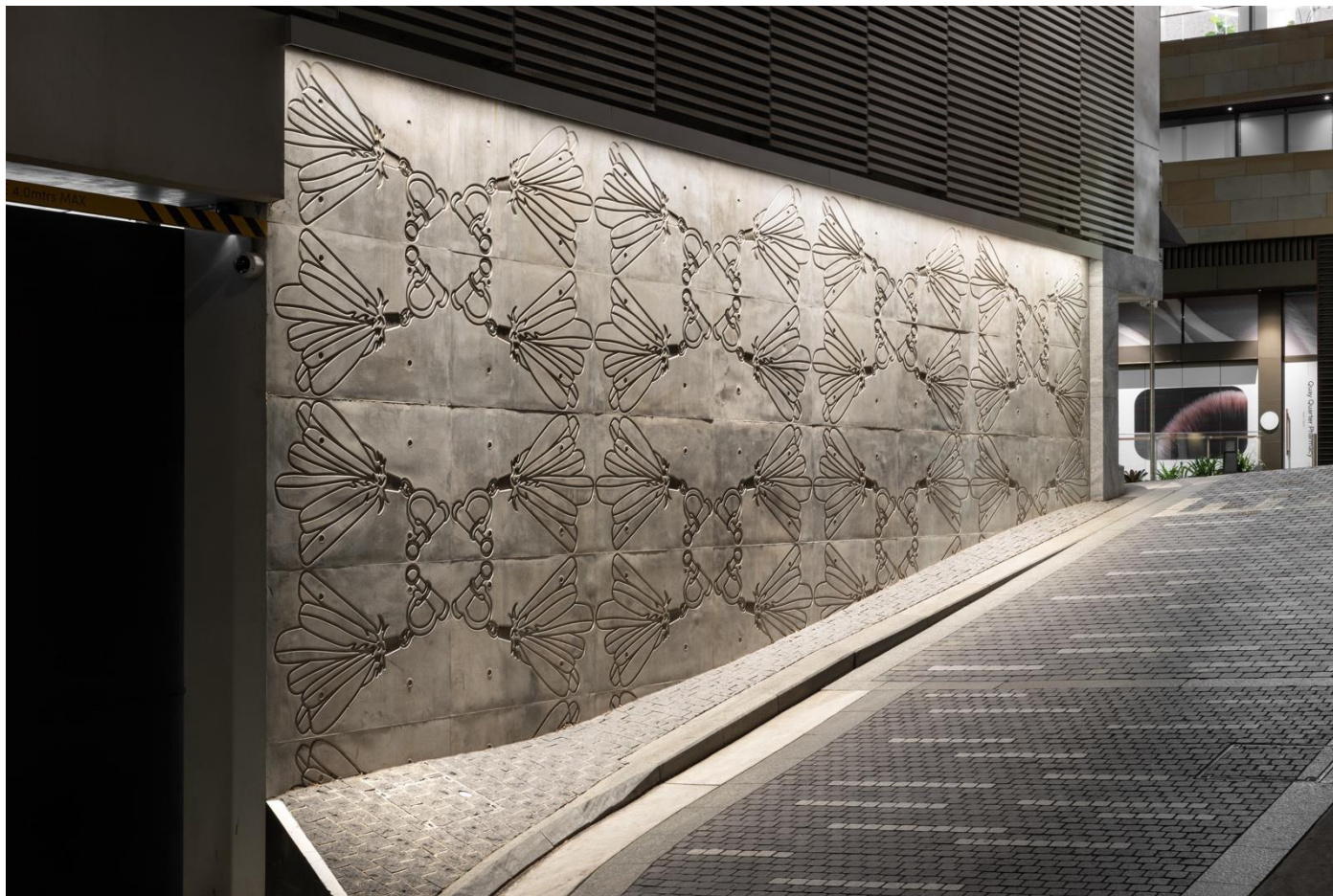
19.25m (length)

Quay Quarter Lanes, Sydney

Commissioner: AMP Capital

Project curator: Barbara Flynn, Art Advisor to AMP Capital for Quay Quarter Sydney

Photos: Mark Pokomy



Jonathan Jones

remembering Arabanoo: bengadee (ornament), 2022

Artwork design inscribed into off-form concrete of structural wall

9-15 Young Street

Quay Quarter Lanes, Sydney

Commissioner: AMP Capital

Architects: SJB

Project curator: Barbara Flynn, Art Advisor to AMP Capital for Quay Quarter Sydney

Photos: Mark Pokomy



Jonathan Jones

Remembering Arabanoo: gwara (flags), 2022

Three flags, located on the northern (Customs House Lane) and western (Loftus Lane) facades of Hinchcliff House Wool

750cm (length) × 50cm (width)

Quay Quarter Lanes, Sydney

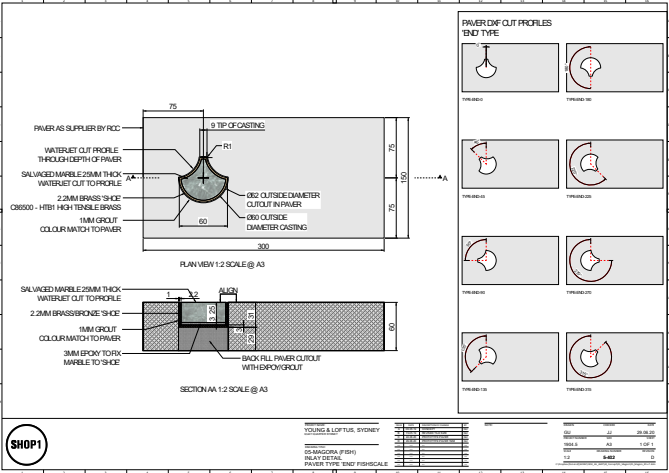
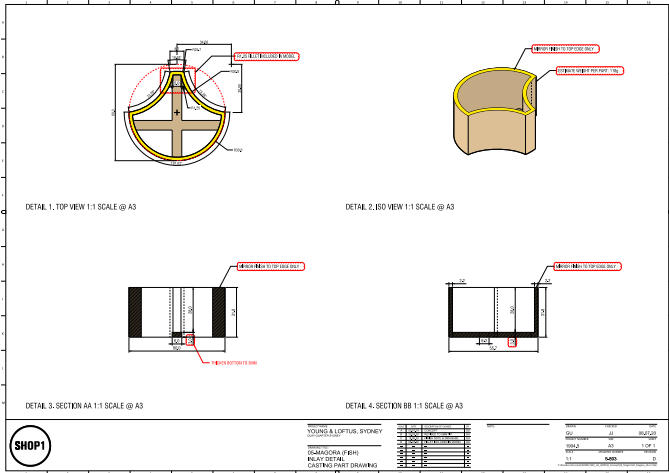
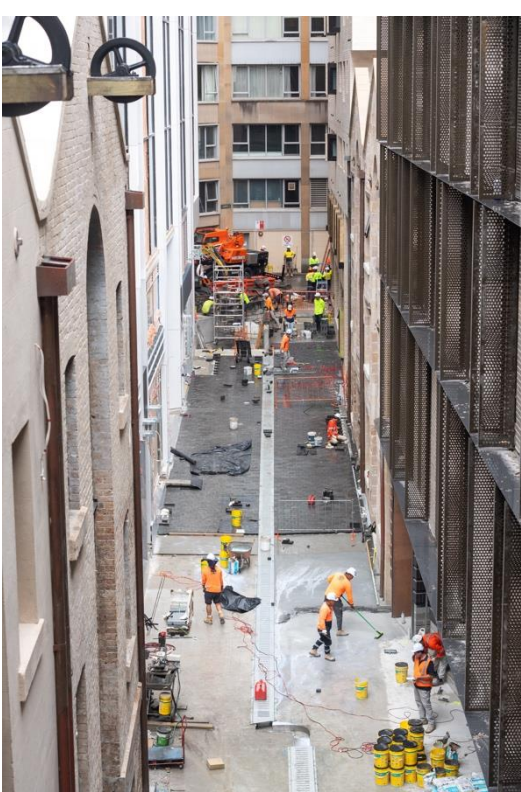
Commissioner: AMP Capital

Heritage architects, Hinchcliff House: Carter Williamson

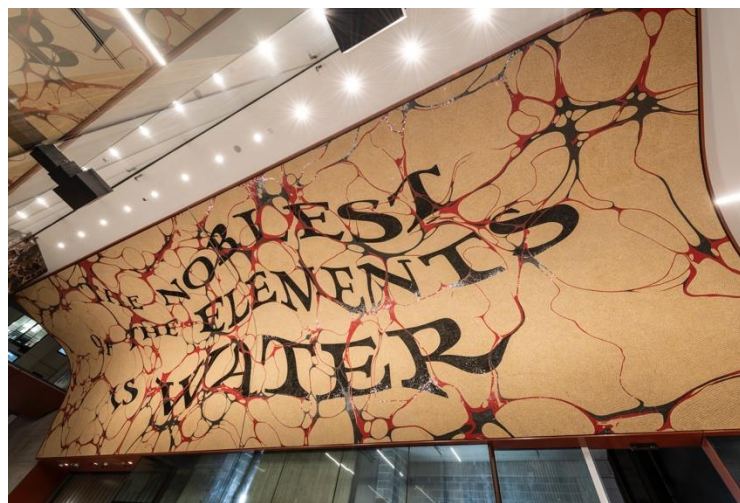
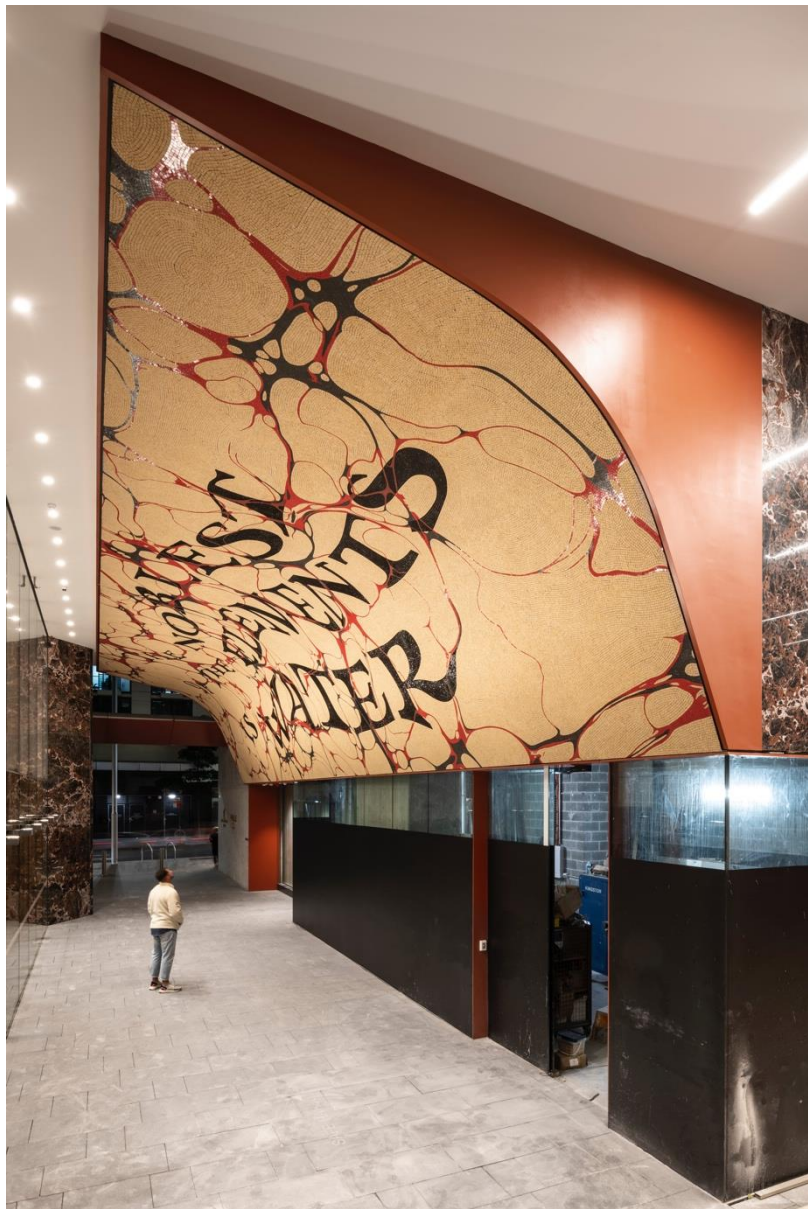
Project curator: Barbara Flynn, Art Advisor and Art Project

Manager to AMP Capital for Quay Quarter Sydney

Photo: Mark Pokorny



F L Y N N



Agatha Gothe-Snape

The Noblest, 2020

Mosaic

4 x 17m; area: 105sq m

Height off the ground, to top edge: 6.337m; to bottom edge: 3.29m

Greenland Centre, Sydney

Commissioner: Greenland (Australia) Pty Ltd

Architects: BVN

Project curator: Barbara Flynn, Art Advisor to Greenland (Australia) Pty Ltd for Greenland Centre

Photos left and top right: Mark Pokorny

Photo bottom right: Trvisanutto Artistic Mosaics, Spilimbergo, Italy



Lara Schnitger

Patchwork of Light, 2020

Ten lightboxes

Left:

Render from original artwork proposal, 2017

Right:

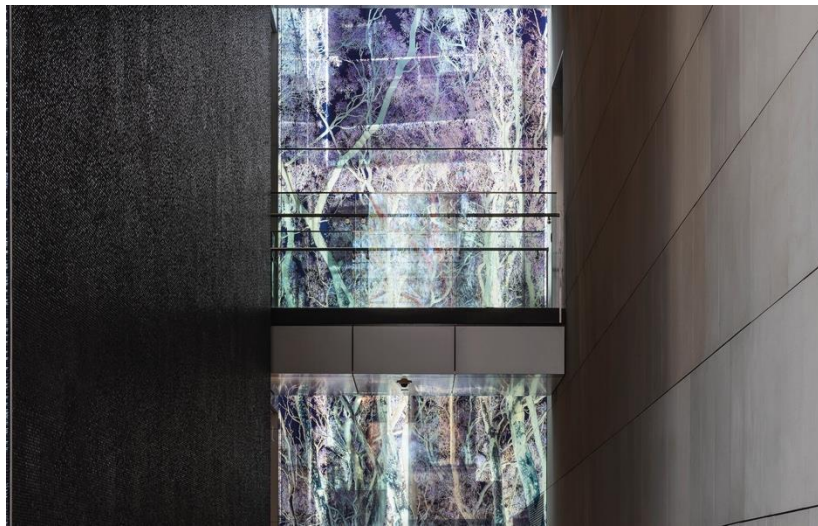
Artist Schnitger with the final work

Reiby Place, Sydney

Commissioner: City of Sydney

Project curator: Barbara Flynn, Curatorial Advisor, City Centre, City of Sydney

©2019 Lara Schnitger



Sabine Hornig

Shadows, 2019

Coloured print on glass

Approx. 600m²

Through-site link, International Towers, Barangaroo South, Sydney

Commissioner: Lendlease

Architects: RSH+P

Project curator: Barbara Flynn, Curatorial Advisor to Lendlease and Barangaroo Delivery Authority for Barangaroo

© 2019 Sabine Hornig

Photos: Mark Pokomy



Yhonnie Scarce

Ectopia, 2019

700 glass-blown elements

6.9 x 8.4 x 1.2m

UTS Graduate School of Health

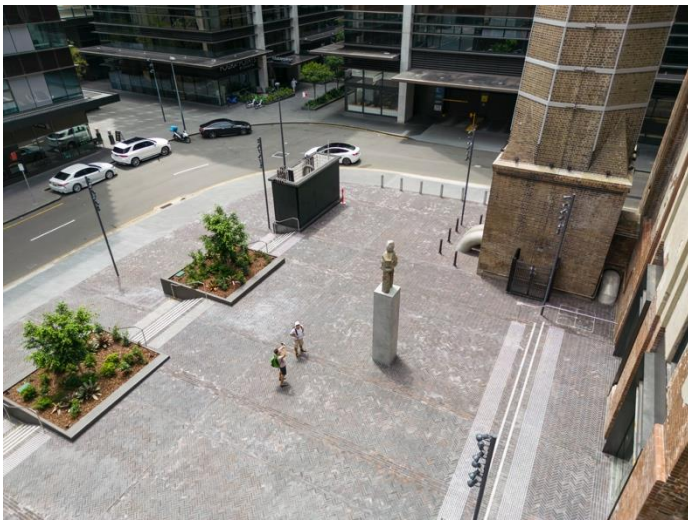
100 Broadway, Central Park

Commissioner: Frasers Property Australia and Sekisui House Australia

Architects: Foster + Partners

Project curator: Barbara Flynn, Art Advisor to Frasers Property Australia and Sekisui House Australia for Central Park

Photo: Mark Pokorny



Ugo Rondinone

The Remembered: The Sydney AIDS Memorial, 2019

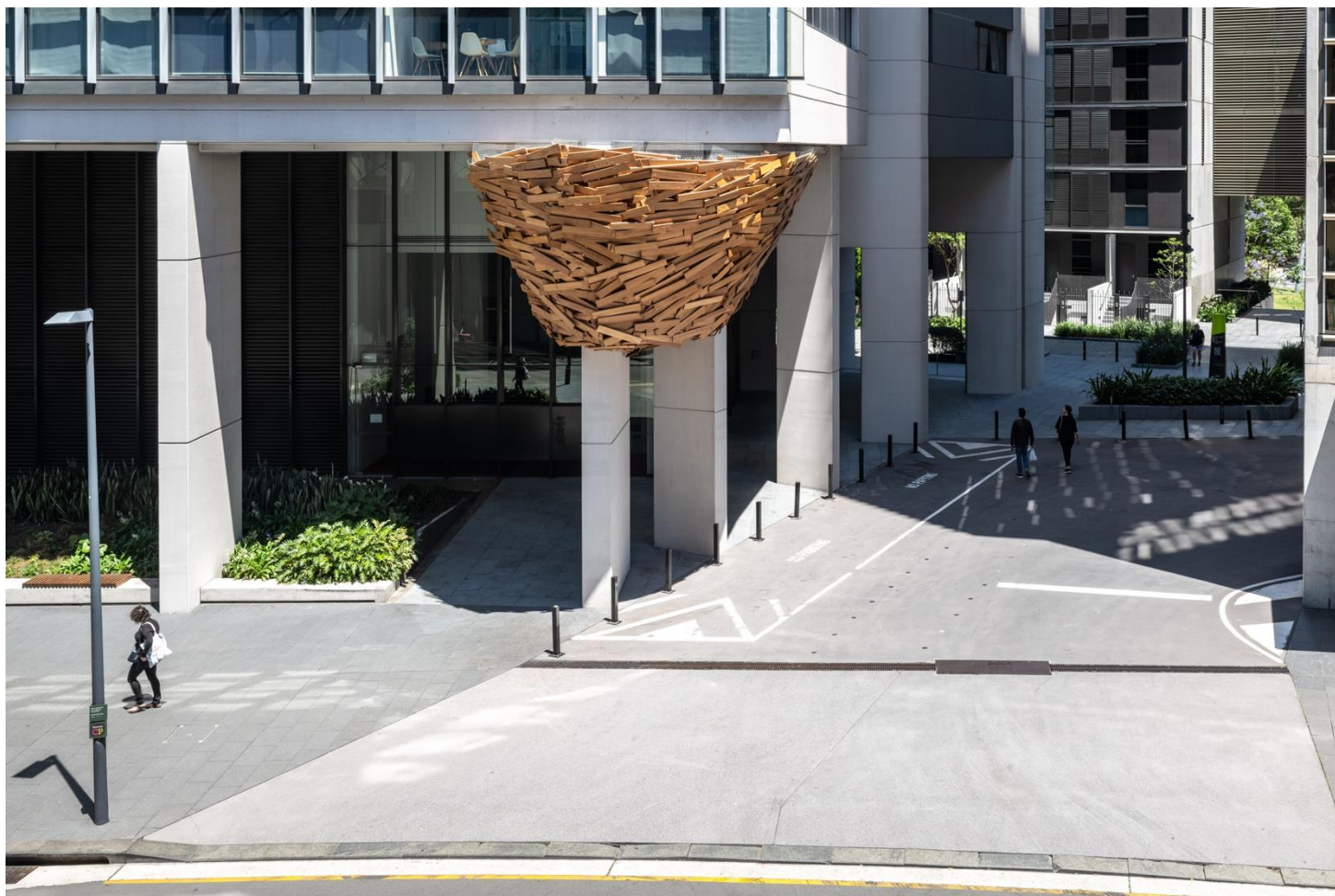
Bluestone blocks atop artist-designed concrete plinth
Brewery Yard, Central Park, Sydney

Commissioner: Frasers Property Australia and Sekisui House Australia (with thanks to Mick Caddey and Michael Goldrick)
Owner: IP Generation

Architects: Tzannes

Project curator: Barbara Flynn, Art Advisor to Frasers Property Australia and Sekisui House Australia for Central Park

Photos: Mark Pokorny



Tadashi Kawamata

Big Nest in Sydney, 2018

Blackbutt and spotted gum

The Mark, Central Park, Sydney

Commissioner: Frasers Property Australia and Sekisui House Australia

Architects: Johnson Pilton Walker (JPW)

Project curator: Barbara Flynn, Art Advisor to Frasers Property Australia and Sekisui House Australia for Central Park

Photo: Mark Pokorny



Pipilotti Rist

Sparkling Pond, Bold-Coloured Groove & Tender Fire (Please walk in and let the colours caress you), 2018

Multi-channel video projection with coloured glass, synchronised light system, silent

3 floor projections: 310cm, 195cm and 140cm (radii)

Coloured glass wall: 720 × 375cm

5 Park Lane, Central Park, Sydney

Commissioner: Frasers Property Australia and Sekisui House Australia

Architects: Johnson Pilton Walker (JPW)

Curator: Barbara Flynn, Art Advisor to Frasers Property and Sekisui House for Central Park

Images: copyright © the artist, courtesy the artist, Hauser & Wirth and Luhning Augustine

Photos: Mark Pokorny



Justine Varga

Fusuma, 2018

Photographic image interlaid between sliding glass wall panels
DUO, Central Park, Sydney

Commissioner: Frasers Property Australia and Sekisui House
Australia

Architects: Foster + Partners

Project curator: Barbara Flynn, Art Advisor to Frasers Property
Australia and Sekisui House Australia for Central Park

Photo: Mark Pokorny



Tracey Emin in Macquarie Place park sitting on bench with sculptured birds below, and left: details
The Distance of Your Heart, 2018
 68 hand-made bronze birds placed on facades, in doorways, on railings and under park benches
 Bridge and Grosvenor Streets and Macquarie Place Park
 Commissioner: City of Sydney
 Project curator: Barbara Flynn, Curatorial Advisor, City Centre, City of Sydney
 Photos: Katherine Griffiths



Mike Hewson
Illawarra Placed Landscape, 2018
 200 tonnes of sandstone (contribution of Troy Stratti, Bundanoon Sandstone), four palm trees (*Livistona australis*), structural steel, irrigation systems, truck straps, swing, soft fall 23 x 17m
 Commissioner: Wollongong City Council
 Project curator: Barbara Flynn, Art Advisor to Wollongong City Council
 Photos: Mark Pokomy



Tomás Saraceno

Sundial for Spatial Echoes (working title), 2015
Proposal for unrealised project for Barangaroo South,
Sydney

Commissioners: Lendlease and Barangaroo Delivery
Authority

Project curator: Barbara Flynn, Curatorial Advisor to
Lendlease and Barangaroo Delivery Authority for
Barangaroo South

Render: Studio Tomás Saraceno



Junya Ishigami

Cloud Arch, 2014-ongoing

Artist's impressions, 2017

Town Hall Square, at the intersection of George, Park and
Druitt Streets, Sydney

Commissioner: City of Sydney

Project curator: Barbara Flynn, Curatorial Advisor, City
Centre, City of Sydney



Archie Moore

United Neytions, 2014–18

T1 International Terminal, Sydney Airport

28 flags, polyester, nylon, zinc-plated alloy

Two sizes: 456 x 228cm; 228 x 228c,

Stainless steel frame: 2000 x 1700cm

Commission of Sydney Airport and MCA Australia

Project curator: Barbara Flynn, Curatorial Advisor to Sydney

Airport in collaboration with MCA Australia

Photo: Jessica Maurer



Jenny Holzer

I STAY (Ngaya ngalawa), 2014

LED sign with blue, green & red diodes

708.7 × 68.03 × 62.4 inches

1,800 × 172.8 × 158.4cm

Text: "The Letter" from *Skins: Contemporary Indigenous*

Writing by Sally Morgan, © 2000 by the author;

used/reprinted with permission of the author

"In the Dormitory" from *Is that You, Ruthie?* by Ruth

Hegarty, © 2003 by the author; used/reprinted with

permission of the author

© 2014 Jenny Holzer, member Artists Rights Society (ARS),

NY

8 Chifley Square, Sydney

Commissioner: Mirvac

Project curator: Barbara Flynn, Art Advisor to Mirvac for 8

Chifley Square

Photo: Brett Boardman



Cerith Wyn Evans

Light event for 161 Castlereagh Street..., 2013

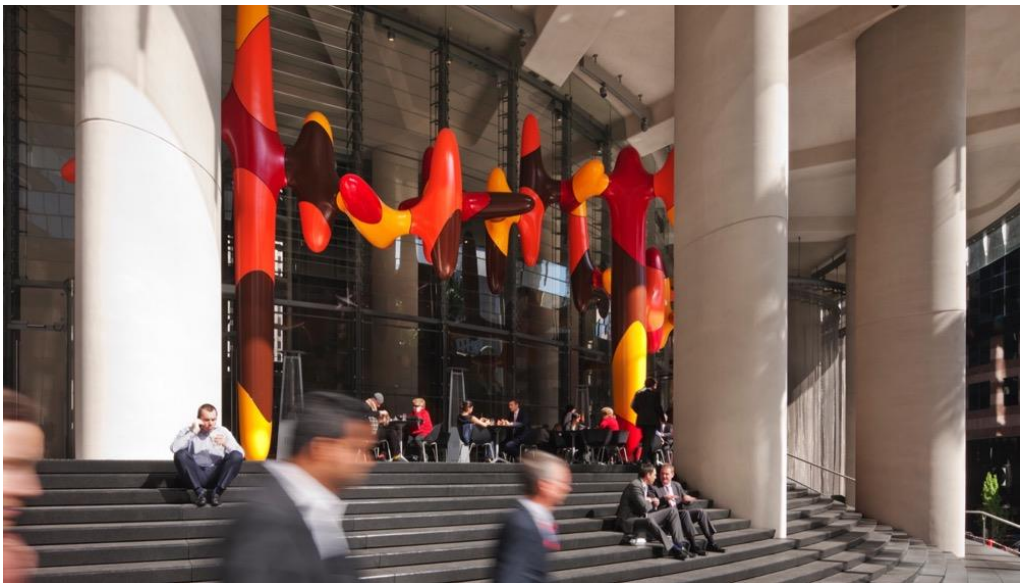
Neon

ANZ Tower, 161 Castlereagh Street, Sydney

Commissioner: Grocon

Project curator: Barbara Flynn, Art Advisor to Grocon for 161
Castlereagh Street

F L Y N N



James Angus

Day in day out, 2011

Aluminium, stainless steel, enamel paint

959 × 2011 × 617 cm

1 Bligh Street, Sydney

Commissioner: DEXUS Property Group, DEXUS Wholesale Property and Cbus Property Group

Architects: Ingenhoven Architects and Architectus

Project curator: Barbara Flynn, Art Advisor to DEXUS Property Group, DEXUS Wholesale Property and Cbus Property Group

Photos: Hans Georg Esch



Freddie Timms

Lissadell, 2010

Ceiling painting

16 x 20m

Ark, 40 Mount Street, North Sydney

Commissioner: Investa Property Group

Architects: Rice Daubney

Project curator: Barbara Flynn, Art Advisor to Investa
Property Group

Barbara Flynn Pty Ltd
51/117 Macleay Street
Potts Point, NSW 2011
Mail to: PO Box 1671
Potts Point, NSW 1335 Australia
barbara@barbaraflynn.com
AU +61 (0) 411 877 379
US +1 702 858 5978

barbaraflynn.com