

A L A Y A

P L A C E

Where
movement
and stillness
find
their perfect
rhythm.



Introduction ⁶



Our ⁸
Ethos

Design ²⁶
Philosophy


The Alaya ³⁶
Experience

Our ⁴⁵
Amenities

Space ⁵⁷
Options

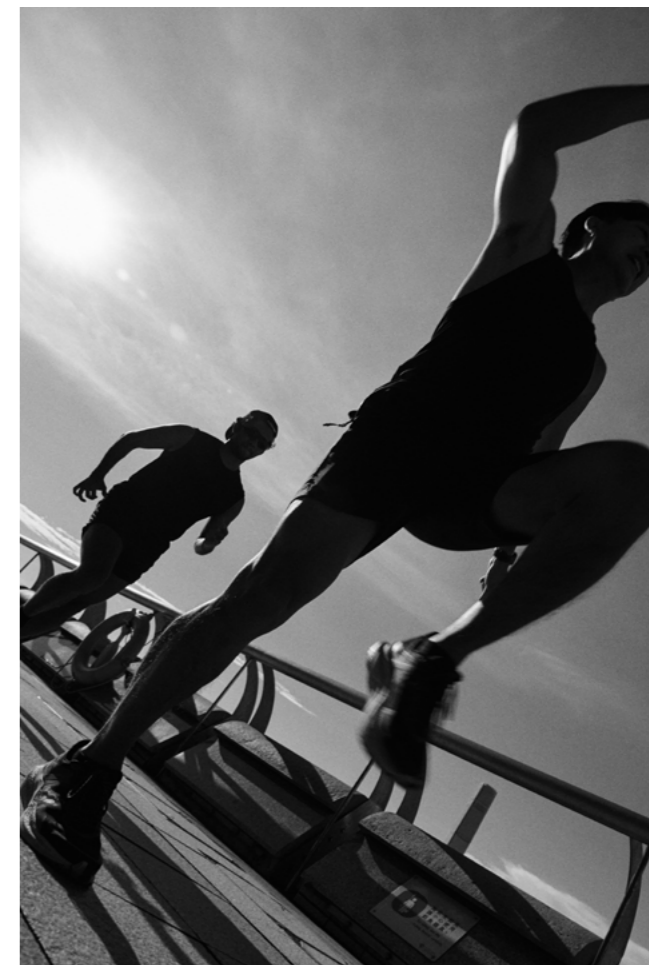
Leasing ⁷²
Guide

Connect & Discover ⁸⁰

A high-contrast, black and white photograph of a person sitting on a grassy field. The person is in a meditative or yoga-like pose, with their legs crossed and arms resting on their knees. The lighting is harsh, creating deep shadows and bright highlights on the person's skin and the grass. The overall mood is contemplative and serene.

1

Our Ethos



The Alaya way of living

At Alaya Place, home becomes a daily practice of well-being. Mornings can begin easing into stillness at our recovery room, or moving gently through spaces designed for quiet restoration. Within each residence, soft lighting, natural textures, and calming palettes come together to

encourage deeper sleep, better rest, and a sense of calm that lingers. Thoughtfully attuned to your rhythm, Alaya Place nurtures the daily rituals that bring you back to yourself—a way of living that restores, realigns, and inspires from within.

What we believe in

Alaya Place exists to nurture well-being in its most essential form. We create environments that protect mental clarity, support physical well-being, and gently encourage restoration. Every detail put into our space—from the natural sunlight that seeps through our window, to the

restorative experiences in our space—is carefully considered for holistic living. Our mission is to offer homes that feel restorative and rooted, where thoughtfulness, balance, and a quiet sense of becoming guide you back to yourself. A place to feel whole. A place to call home.





The Alaya Signature

At Alaya Place, wellness isn't added on—it's engineered in. Every element of your space is designed to do more than look good; it's built to help you feel better, think clearer, and rest deeper. From multi-sensory interiors to bio-responsive

infrastructure, we've reimagined what a serviced residence can be: not just a place to stay, but a system that supports you—physically, mentally, and emotionally—every day.

The Alaya sleep experience

At the core of each residence is a sleep setup crafted for deep restoration. Each residence is equipped with Serta® mattresses with enhanced thickness and integrated cooling gel, chosen for their luxurious comfort and ability to regulate temperature throughout the night, minimizing disruptions from heat or pressure points.

Bedrooms are complemented by blackout curtain systems and sound-reducing materials,

warm diffused lighting that preserves melatonin production, and acoustic treatments that insulate you for urban sound. The result is a sleep environment precisely engineered for rest at every level—physiological, psychological, and sensory—allowing the body to repair and the mind to fully disengage.



The science of sleep

Sleep, redefined. At Alaya Place, each room is fitted with blackout systems engineered to deliver complete darkness on demand—supporting deeper, more restorative rest. Paired with Serta performance bedding

designed to regulate temperature and relieve pressure points, the entire sleep setup is designed to support both body and mind.



Recovery-first design

Wellness is built into our layout and design. Rooms are shaped with a recovery-first philosophy: zen-inspired floor plans create mental clarity, while soft natural textures ease the senses.

Flexible spaces transition fluidly from day to night, allowing you to reset between tasks. Everything is anchored by thoughtful ambient lighting—balancing brightness and warmth to promote a more natural, restorative atmosphere.

Advanced wellness infrastructure

Health lives in the details. Inside each unit, Jolie* shower systems filter out chlorine and heavy metals—offering cleaner water with every rinse.

Air purification systems by Xiaomi* track and display real-time indoor air quality, while lighting throughout the space is designed to support your body’s circadian rhythm.

A NutriBullet* incorporated into each room makes it easy to incorporate daily smoothies into your routine. Every element works together to create a home that supports your wellness—intuitively and effortlessly.





The Alaya water experience

Water at Alaya Place is treated as a vital element of daily well-being. Each unit is equipped with a Jolie filtration system designed to remove over 85% of chlorine, heavy metals, and other impurities found in city water.

In the shower, this means gentler water for the skin and hair—preserving the skin’s natural barrier, reducing irritation, and allowing personal care

products to perform more effectively. At the tap, a built-in multi-stage filtration system delivers clean, mineral-rich drinking water, eliminating the need for bottled alternatives.

These integrated systems support healthier skin, improved respiratory comfort, and a more mindful, sustainable way to live.

Curated wellness network

Living well extends beyond your door. Residents enjoy exclusive access to premium fitness partners, with perks such as complimentary

access to premium gyms and close proximity to yoga studios connect you to the city and its community, one stride at a time.



Thoughtful amenities

We've partnered with premium wellness brands to curate amenities that support daily recovery and comfort. From in-room recovery tools to optional fitness equipment, each offering is

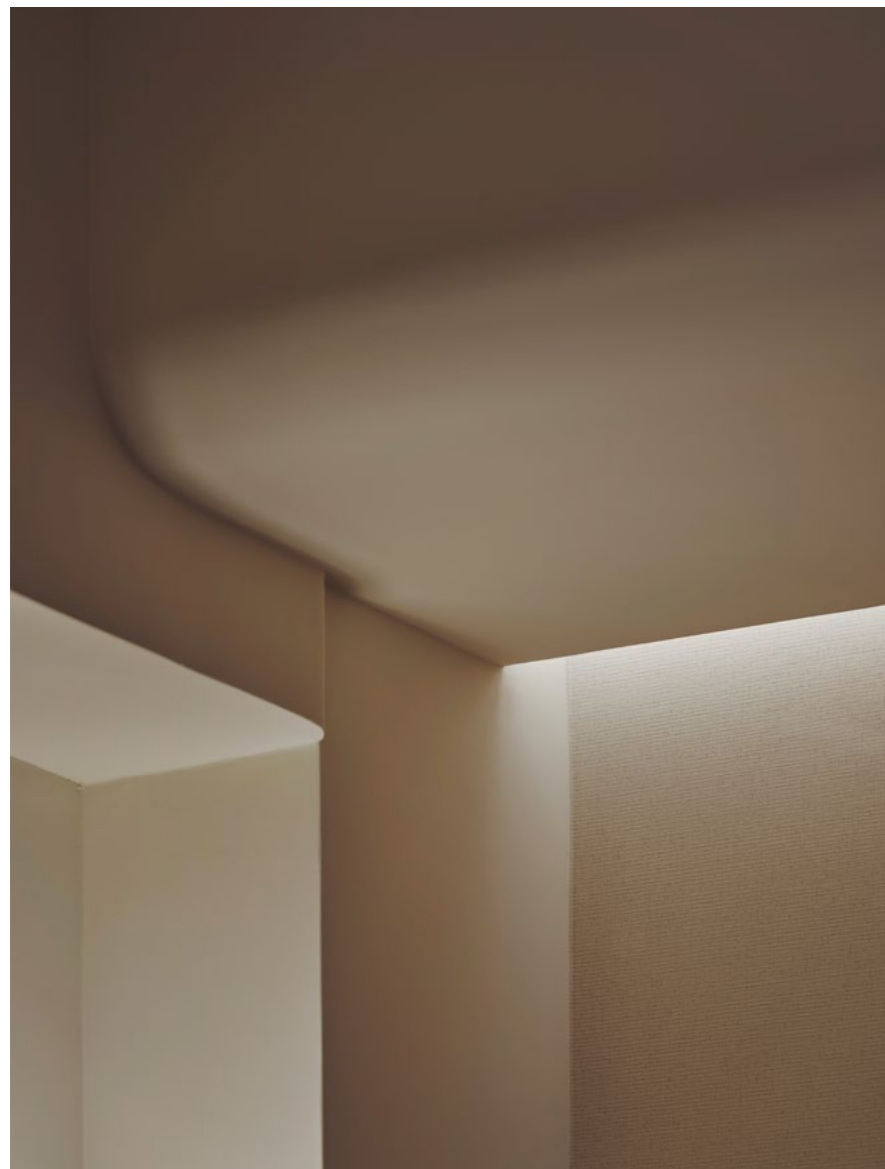
designed to meet you where you are and support how you want to feel. Whether you're winding down or warming up, Alaya Place makes it easy to stay in sync with your personal goals.



A black and white photograph of a large, gnarled tree trunk with many roots exposed on the ground. The tree's bark is deeply textured with vertical ridges and grooves. Numerous roots of varying thicknesses emerge from the trunk and spread out across the ground, some running parallel to the trunk and others branching out at angles. The lighting creates strong highlights and deep shadows, emphasizing the ruggedness of the wood.

2

Design Philosophy



There's a gentle intentionality that guides the architecture behind Alaya Place—a quiet clarity that reveals itself through tone, texture, and thoughtful restraint.



Materials

The façade begins in deep contrast, its dark form giving way to a lighter, more tactile interior palette layered with stone, wood, and muted fig accents.

These materials were selected not only for their natural elegance, but for how they shift with time—softening in the light, deepening with use, and grounding each space with quiet presence.

More than visual appeal, the process was rooted in feeling: to design a home that settles the senses and speaks in subtleties.





Design with intention

Our architectural design is guided by a commitment to intentional living. Flow guides a spatial experience through soft transitions of light, natural movement between spaces/zones, and calming moments between. Its form

is honest and open, designed to breathe, to ground, and ultimately, to restore. Every detail invites a gentler pace—one that feels both purposeful and personal, like coming home.´



ALAYA
PLACE





3

The Alaya
Experience

Everything within reach

Situated in one of Hong Kong's most connected neighborhoods, Alaya Place offers access to the best the city has to offer—without the rush. Surrounded by local cafés, curated dining, and independent shops, Wan Chai moves at a considered pace, blending convenience with a sense of ease.

Leafy paths and nearby green spaces soften the city's edge, offering small moments of calm between each part of the day. From morning to evening walks, the neighborhood brings a feeling of everyday balance, just steps from home.



Our neighbourhood



Food

- 1 Bakehouse
- 2 BÀRBAR
- 3 TMK Rap & Rolls
- 4 El Taquero
- 5 Samsen

Coffee

- 6 Francis
- 7 Sleepyhead
- 8 A Basic Coffee Production
- 9 Blue Bottle

Shopping

- 9 Wan Chai Market
- 10 Starstreet Precinct
- 12 Marks & Spencer

Fitness

- 13 Jesel Studio
- 14 Pilates La Vie
- 15 Ozone Fitness
- 16 Onyx
- 17 Pure Yoga

Parks

- 18 Southorn Playground
- 19 Wan Chai Park

MTR

- 20 Wan Chai (MTR)
- 21 Admiralty (MTR)
- 22 Hennessy Rd (Tram)
- 23 Queen's Road E (Tram)



Flavours of the neighbourhood

Dine at some of the city’s most loved spots—
 Bakehouse for fresh pastries, Ruam for Thai-
 inspired plates, Motorino for Neapolitan pizza,

and Barbar for curated drinks. Each one just a
 short walk away and always within easy reach.



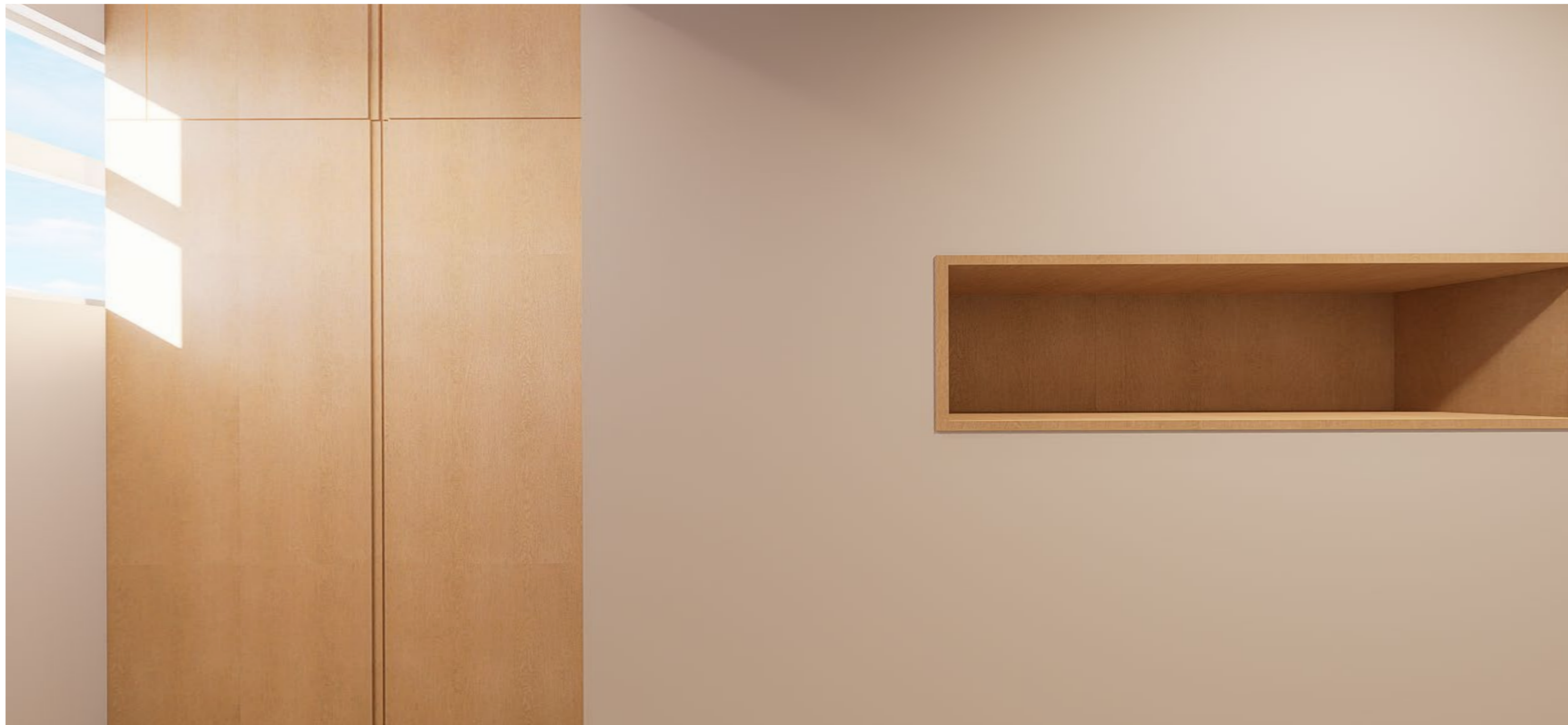
Fresh finds, every day

Wan Chai Market is just steps away, offering
 fresh produce, seafood, and daily essentials.



4

Common Areas



Our architectural design is guided by a commitment to intentional living. Flow guides a spatial experience through soft transitions of light, natural movement between spaces/zones, and calming moments between. Its form is

honest and open, designed to breathe, to ground, and ultimately, to restore. Every detail invites a gentler pace—one that feels both purposeful and personal, like coming home.`



2F Recovery Room

Infrared Sauna A calming 2 to 3-person sauna designed for restorative heat therapy.

Cold Plunge Cold immersion pool to invigorate circulation and aid recovery with a sense of ease.



2F Laundry Area

Four washer-dryer units with an integrated folding bench for ease and convenience.

9F Roof Deck

The roof deck brings together essential equipment with open-air space for movement. It's a place to stretch, strengthen, or reset, where body and mind align with flow of the outdoors.



5



Residences

Alaya Place reimagines Hong Kong living through residences designed with wellness at their core. Each unit balances modern convenience with restorative design, soft palettes, natural textures, and details curated to support stillness and movement. Spaces flow with intention, offering comfort that feels personal and complete

from the moment of arrival. The residences are thoughtfully composed sanctuaries where daily rituals unfold naturally. Whether moving through mornings or unwinding at the end of the way, Alaya Place provides an environment that restores and inspires-- your home within the city.





Entertainment 55-inch TV in Units A & B / 43-inch TV in Unit C



Flexible living Fit wall in the living area and extra storage beneath sofa and bed



Healthy Living Essentials

Nutribullet for smoothies and wellness drinks



Appliances Integrated fridge with freezer, oven with microwave

Filtered Drinking Water Built-in water filter tap



Bathroom Jolie shower system reducing chlorine and impurities



Premium Fixtures Kohler Water Closet and spout for comfort and quality

Premium Sleep System

Serta Twilight mattress designed for comfort and support



Convenience

In-room steamer and digital weighing scale

Unit A&B

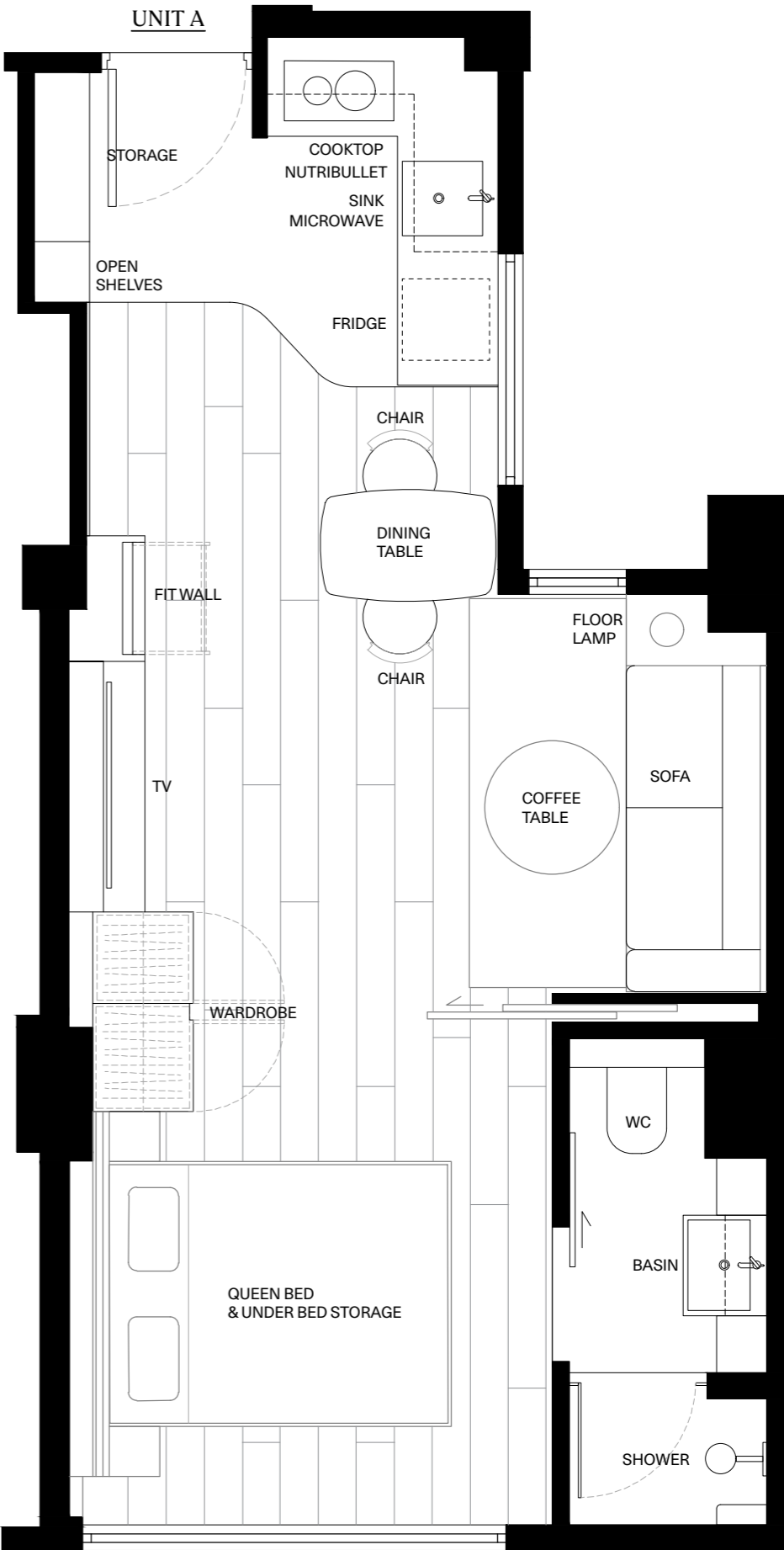
One-bedroom residences

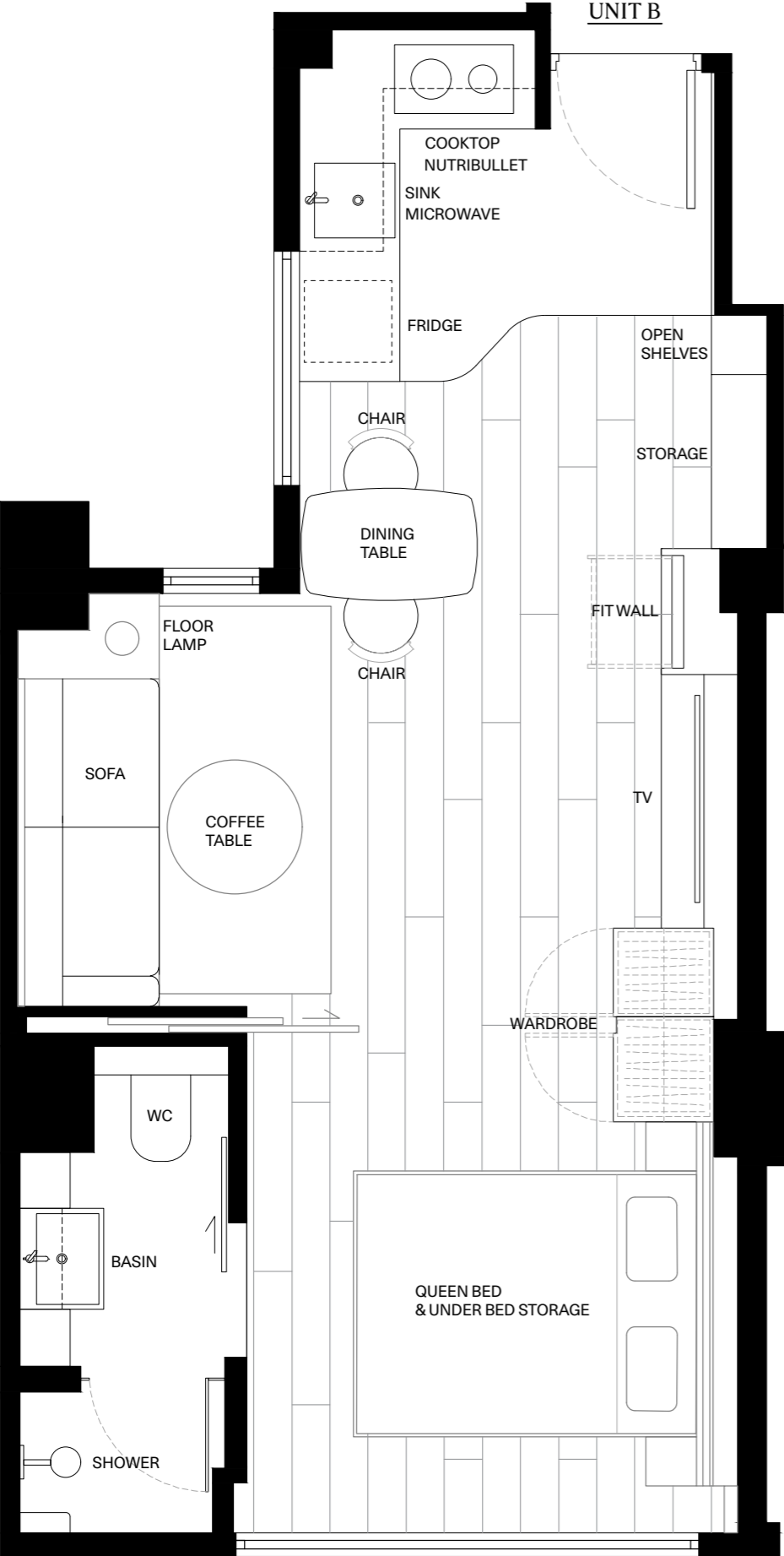


Bedroom and living area separated by a sliding partition, creating a sense of privacy and flow.

Total Area 33 sqm
Bathroom Area 3 sqm
Bedroom Area 8.5 sqm

Extra: Select units on the 3rd floor include a small balcony for fresh air and light.

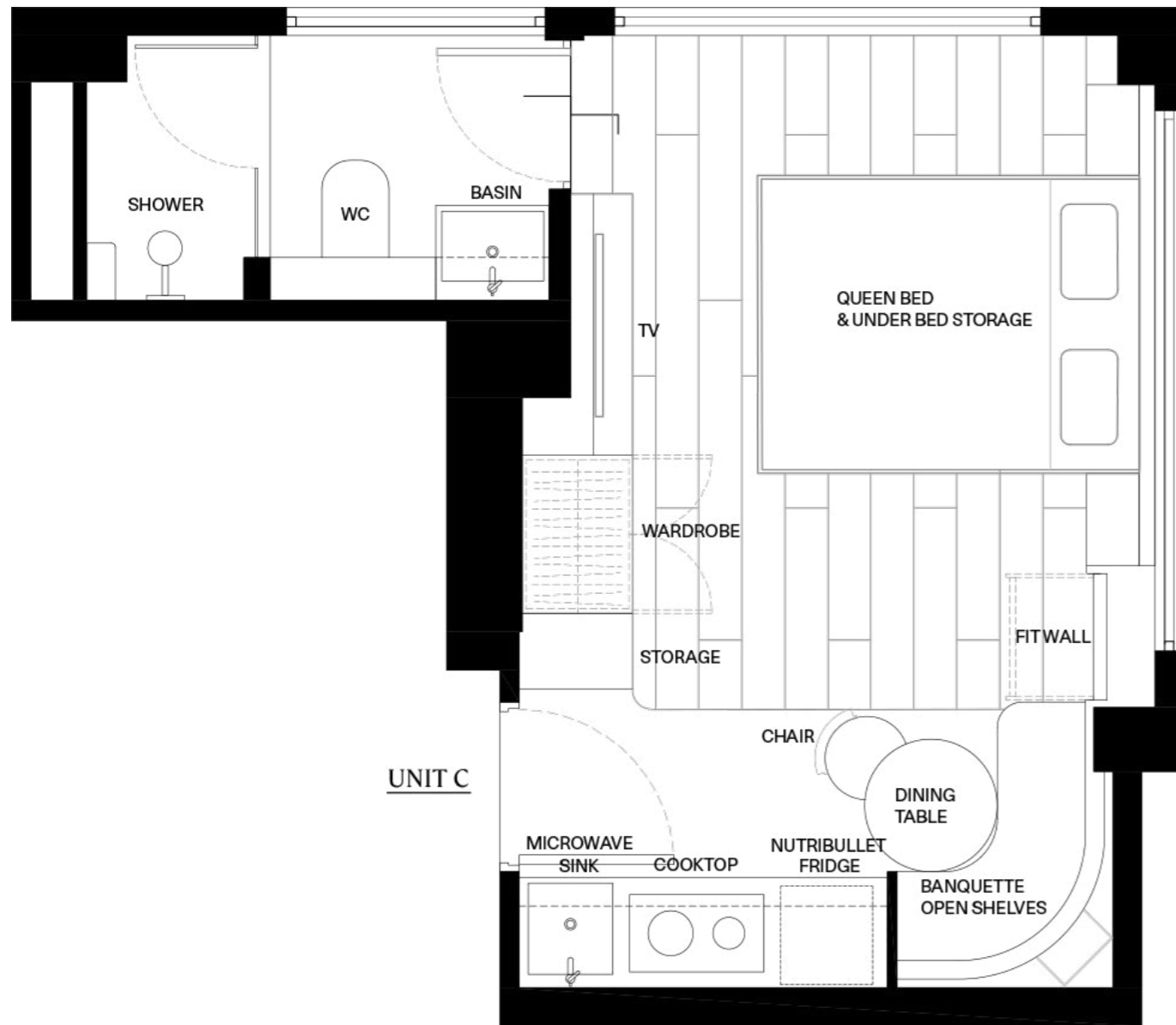




Unit C

Studio residences





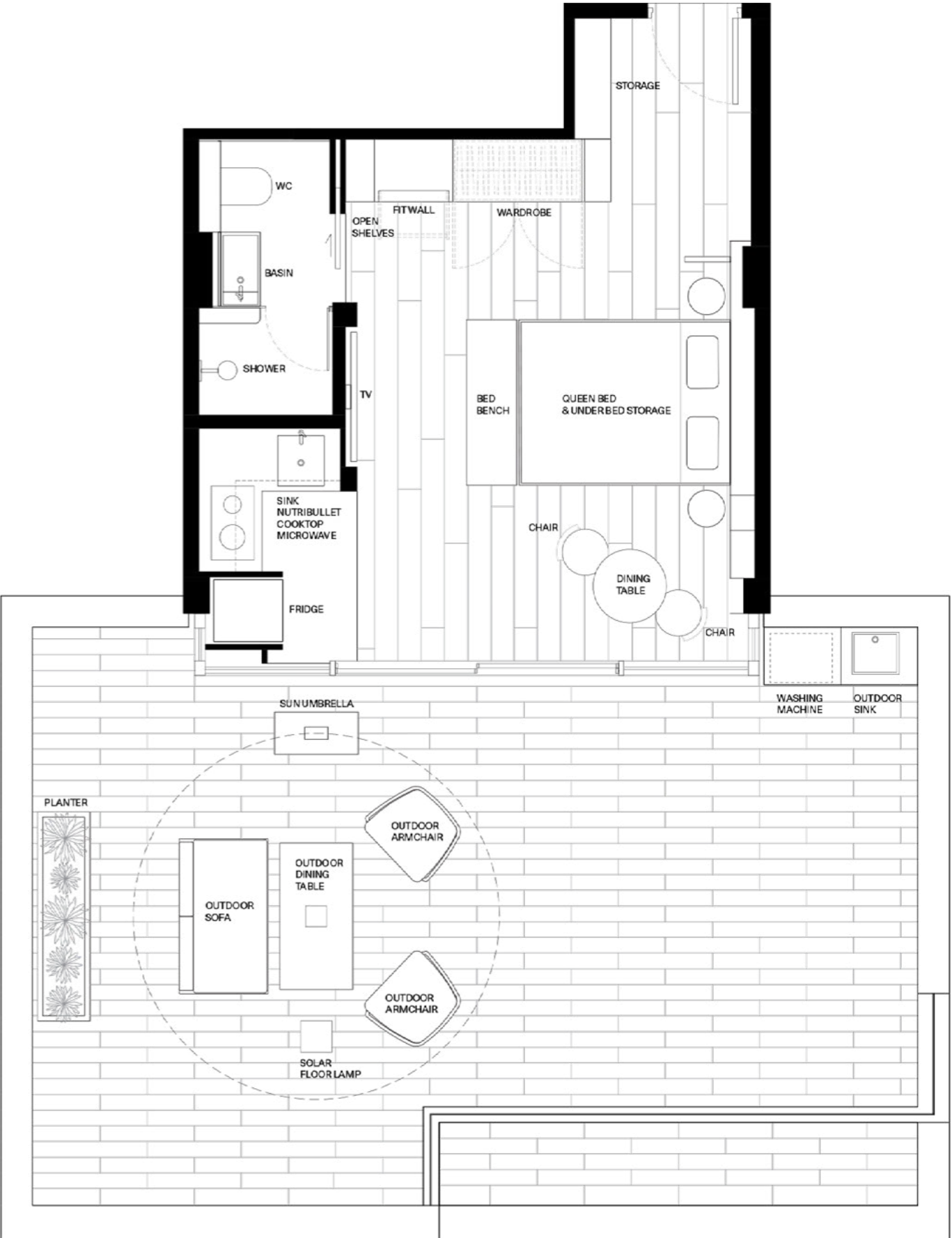
An open plan where bedroom and living space connect seamlessly, designed for simple, flexible living.

Total Area 20 sqm
Bathroom Area 3 sqm

Extra: Typical units on the 3rd floor feature a small balcony, offering an additional pocket of outdoor space.



Designed for those who value wellness rituals in the open air.



Total Indoor Area 21.5 sqm
Terrace Area 44 sqm

Includes all standard in-unit amenities, with an expansive private terrace that extends living outdoors. Outfitted with planters, outdoor furniture, and a utility sink, with provisions for a washing machine and an optional cold plunge.



Alaya Place

Residences



Alaya Place

Residences

Your Alaya way of living begins here.



Schedule a private viewing through our channels.

Mobile +852 51693141
Email info@alayaplace.com
Instagram @alayaplace

*Nutribullet, Jolie, Serta, and Kholer are trade marks of third parties without any link to Alaya Place.

Disclaimer: Some photographs, images, drawings or sketches shown in this website represent an artist's impression of the property concerned only. They are not drawn to scale and/or may have been edited and processed with computerized imaging techniques. We advise prospective residents to conduct an on-site visit for a better understanding of the property, its surrounding environment and the public facilities nearby.

