



13:45 BU 12/12/23 5/8" CT TYPE X UN

Based in New York and London, KBN is an Architecture and Engineering firm committed to delivering thoughtful, client-focused design solutions within the constraints of each project.

Our approach is dynamic and tailored specifically to meet the unique needs and expectations of each client, allowing us to explore a range of design possibilities and outcomes.

We work collaboratively across private and public sectors, managing projects of various complexities and budgets through a coordinated process. Our professional team is dedicated to building lasting relationships with clients and industry peers, continuously evolving our understanding of space and its potential.

We embark every project as a multifaceted experience, a journey expertly handled by our team to ensure a seamless and informative process from concept to construction.

US

2527A
8th Avenue
New York
NY 10030

+1 (646) 259-3030
+1 (347) 417-0096

UK

16A
West Avenue Road
London
E17 9SE

+44 7821 514012

K B N

ABOUT

info@kbn-services.com



K B N

302 LEWIS AVENUE

Townhouse Remodeling

Location: Brooklyn, US

Typology: Residential

Scope: Design through Execution

Approvals and Permitting: Yes

Main Discipline: Architectural

Overall SF:XX

Contractor: Plane Remodeling

Credits: XX

[Owner Website](#)

A responsible intervention honors the history of a place. The approach to the remodeling of this Brooklyn Townhouse can be described as an orchestrated 3-way effort, a talented contractor, a professional design team, and the Owner, with a strong vision to pursue.

The Project has been designed to work hand by hand with the existing conditions, respecting and enhancing historical details through the juxtaposition of new features that despite the "modern" feeling tries to establish a seamless connection, thanks to the employment of accurately selected materials, paints, and accents throughout.

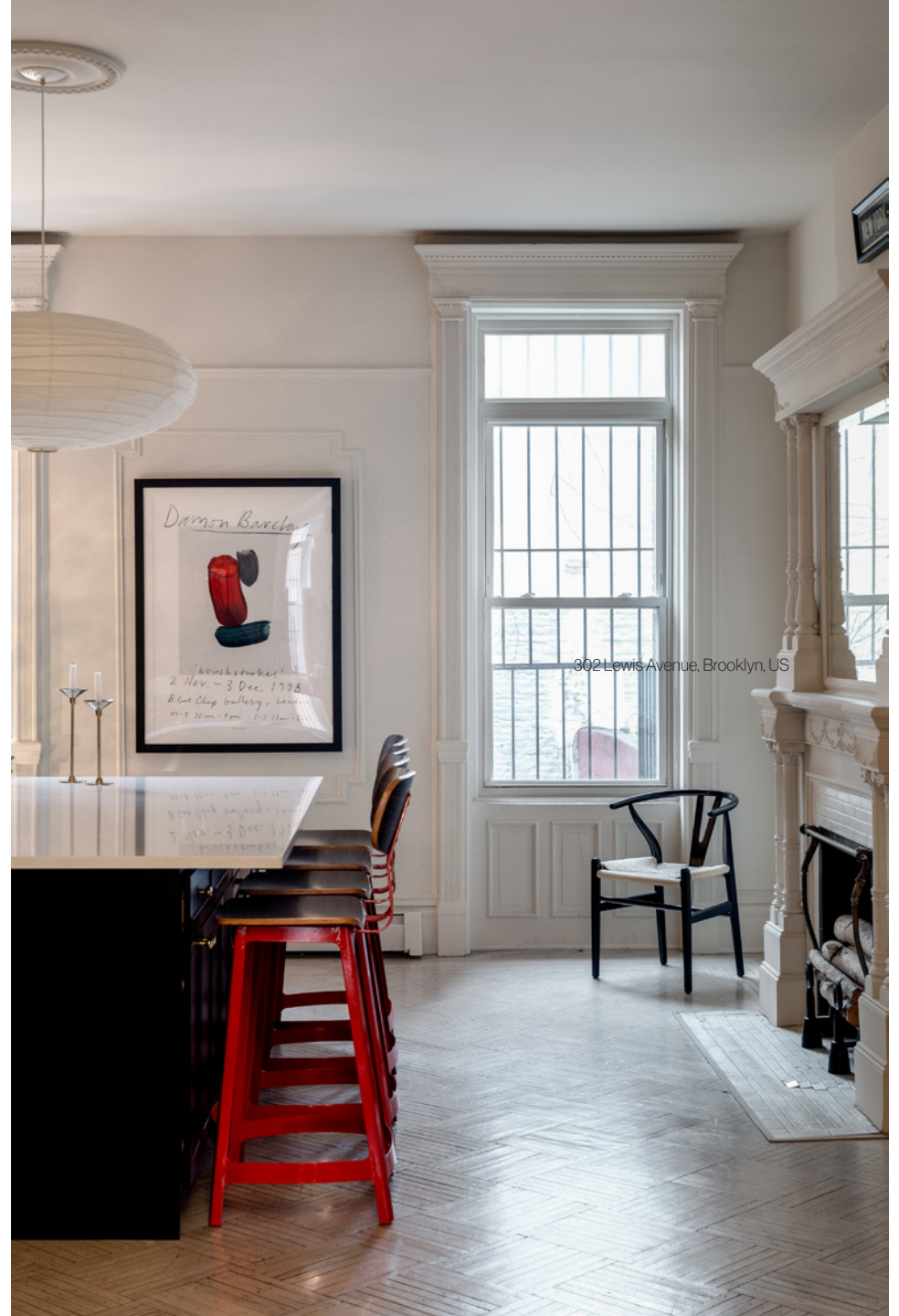


The KBN team was a dream partner in our renovation. They were collaborative and inspiring, knowing when to listen and when to push us to achieve amazing results. The perfect balance of professionalism and creativity! Without their guidance we would have been lost and could not have dreamt of what we actually got to accomplish. We can't wait to work with them again.

Zach & Jess



K-B-N



302 Lewis Avenue, Brooklyn, US

K B N

27 BROOHMILL ROAD

Victorian Terrace House Alteration

Location: London, UK

Typology: Residential

Scope: Design to Construction

Disciplines: Architectural

Contractor: Undisclosed

An extensive renovation of a Victorian terrace house in Woodford, London, to create a sequence of interconnected internal and external living spaces.

The project accommodates a few enlarged living spaces, new kitchen and dining area, and a loft conversion for additional sleeping accommodation. The house has been designed around the kitchen, achieving the Owner vision of being that particular section of the house as the core of the project with an open plan approach.

Opening up the original interior arrangement allowed natural light coming into the new layout generating a dramatic internal opening to enable views through the house.



K B N



27 Broomhill Road, London, UK



K B N

27 Broomhill Road, London, UK

K B N

677 JEFFERSON AVENUE

Townhouse Gut Remodeling

Location: Brooklyn, NY

Typology: Residential

Scope: Design to Construction

Disciplines: Architectural+Structural

Contractor: GCL Construction

"When you can feel the presence of the past,
a guidance will be easy to find"

A gut remodeling of a Brooklyn Townhouse
where the presence of the historical
features will be counterbalancing the new
intervention.

The project unfolds in a series of episodes
defined by the owner's sophisticated taste,
which has played a defining role throughout
the journey.

The energy of the family that will inhabit the
house is tangible, building memories around
well-crafted choices, their own scenography.
When their flow meets history, be prepared
for a vibrant surprise.



K B N

677 Jefferson Avenue, Brooklyn, US



K B N



677 Jefferson Avenue, Brooklyn, US

K B N

1985 JEROME AVENUE

Mixed Use New Construction

Location: Bronx, US
Typology: Multifamily Mixed Use
Scope: Design to Construction
Disciplines: Structural

Contractor: Mr Joey Caleca for ABCNY

A testament to modern urban living along a historic corridor.

1985 Jerome Avenue is a new development located within the vibrant Jerome Avenue Corridor and Zoning District. This 13-story reinforced concrete structure will encompass over 80,000 square feet, featuring 110 residential units, 28 of which are reserved for income-restricted housing, along with a ground floor commercial space.

KBN provided comprehensive structural and geotechnical engineering design services for this project, proudly serving as the structural engineering designer of record.

The building's design includes 132 micropiles extending from the cellar to bedrock, forming a solid foundation for the reinforced concrete flat plate structure.



K B N

1985 Jerome Avenue, Bronx, US

K B N

50-14 VERNON BOULEVARD

Mixed Use Alteration

Location: Queens, US

Typology: Multifamily Mixed Use

Scope: Design to Construction

Disciplines: Architectural+Structural

Contractor: K&K Group Inc.

Just on the opposite side of the East River, Hunters Point in Long Island City, is experiencing a vibrant, NY style revitalization, with the injection of new local businesses, entrepreneurship, and opportunities for low-rise mixed-use buildings.

KBN has been engaged for a full gut alteration of a building that dates back 1920.

While the overall conditions show signs of aging, the building will undergo a substantial modification of its footprint to accommodate additional square footage for the two redesigned residential units on the second and third floor.

A commercial overlay on the first floor will help contributing to the neighborhood atmosphere, as well as the new masonry façade, will find its own way to connect seamlessly with the surrounding "Queens" scape, where the brickwork would help define the identity of this building diligently crafted.



K B N

270 GREEN STREET

Industrial New Building/Facility

Location: Brooklyn, US

Typology: Industrial

Scope: Design to Construction

Disciplines: Architectural+Structural

Contractor: Avesta NY

Just on the opposite side of the East River, Hunters Point in Long Island City, is experiencing a vibrant, NY style revitalization, with the injection of new local businesses, entrepreneurship, and opportunities for low-rise mixed-use buildings.

KBN has been engaged for a full gut alteration of a building that dates back 1920.

While the overall conditions show signs of aging, the building will undergo a substantial modification of its footprint to accommodate additional square footage for the two redesigned residential units on the second and third floor.

A commercial overlay on the first floor will help contributing to the neighborhood atmosphere, as well as the new masonry façade, will find its own way to connect seamlessly with the surrounding "Queens" scape, where the brickwork would help define the identity of this building diligently crafted.

K B N

58 PROSPECT STREET

Commercial / Industrial / Institutional

Location: Brooklyn, US

Typology: Commercial fit out

Scope: Design to Construction

Disciplines: Architectural

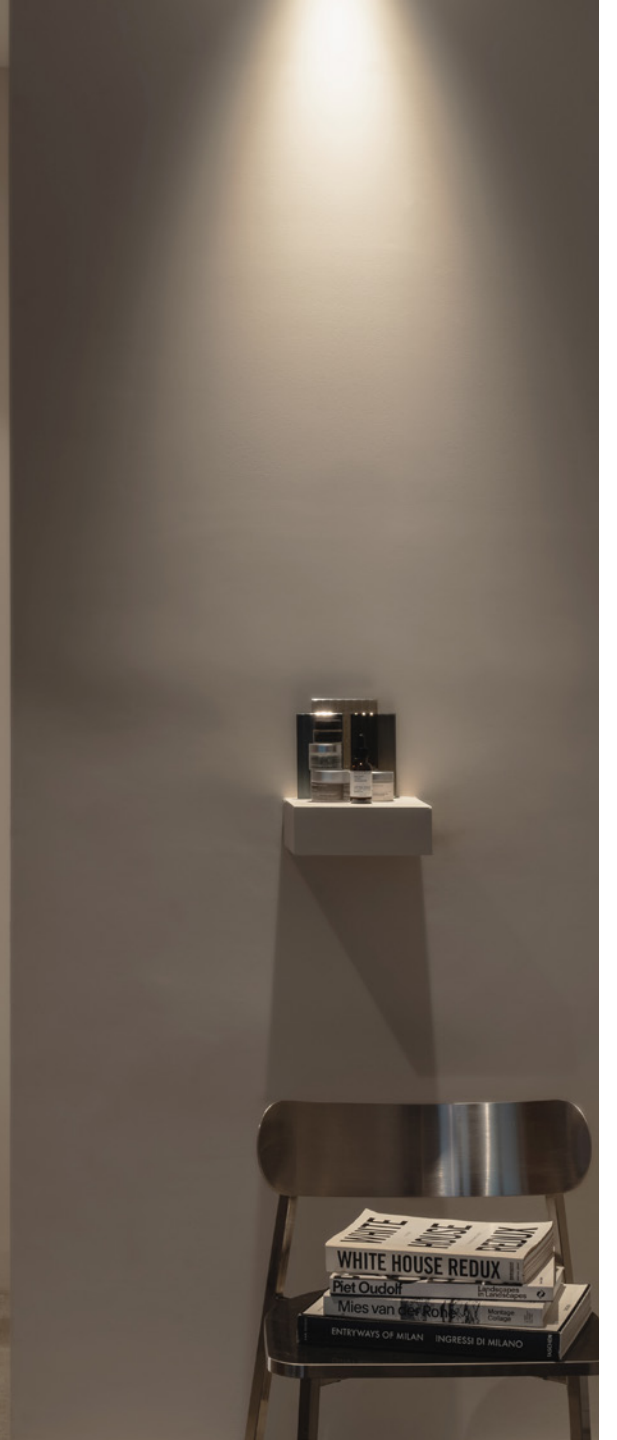
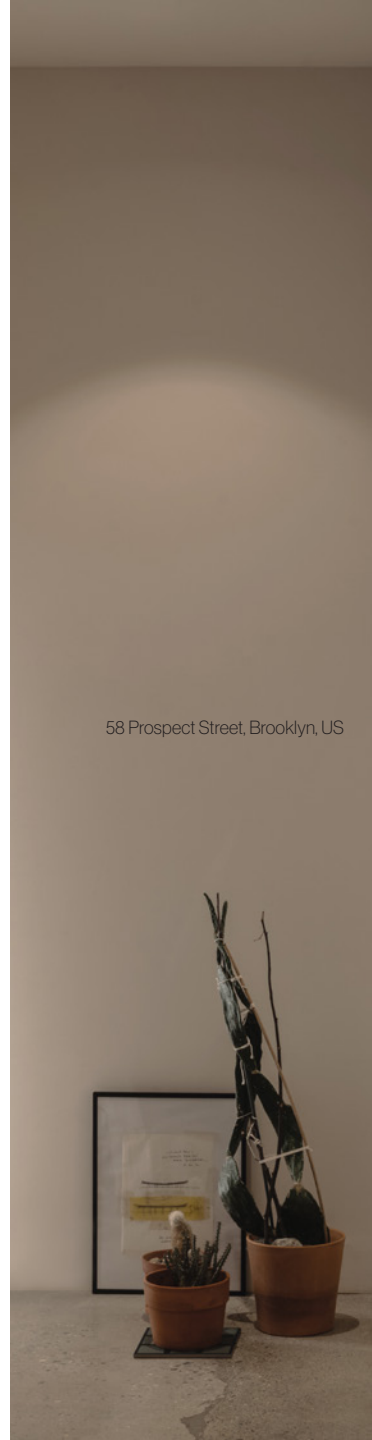
Contractor: Skyland Construction

Lorem Ipsum

K B N



58 Prospect Street, Brooklyn, US



K B N

Prospect Street, Brooklyn, US



K B N

GALA LAHAV LONDON MAYFAIR

Commercial / Industrial / Institutional

Location: London, UK
Typology: Retail Fit Out
Scope: Design to Construction
Disciplines: Architectural

Contractor: Undisclosed

Lorem Ipsum



K B N

GALIA LAH



66 South Audley Street, London, UK

K B N

66 South Audley Street, London, UK



K B N

SARA HILDEN ART MUSEUM

Competition Entry **Culture

Location: Tampere, FI

Typology: Culture

Scope: Competition Entry

Disciplines: Architectural

With: Twelvefortyone Architects, LND

Everything often starts from a very simple gesture that eventually turns into something magical, sophisticated. The ability of every form of art is to play with our imagination, modeling our perception to guide our experience through a different, unexpected journey.

Masses, matters, contrasts, colors, these are often the tools to play with, finding balances, proportions. The way to experience them is the prelude to something surprising, or better said, yet unknown.

Gestures define spaces, moves depict movements, materials create atmospheres, thresholds allow for a subconscious sound perception.

The new Sara Hildén Art Museum revolves around the finding of a balanced proportion within those components, striving to generate a space that connects to the city and the neighborhood at large, without hiding its strong lineaments in pursuing of an educate identity.

K B N



66 South Audley Street, London, UK

GEROLD
MILLER
05.01/01/05.2021

K B N

LAC-MEGANTIC

Residential New Building/Facility

Location: Lac-Megantic, CA

Typology: Residential ADU

Scope: Preliminary/Proposal

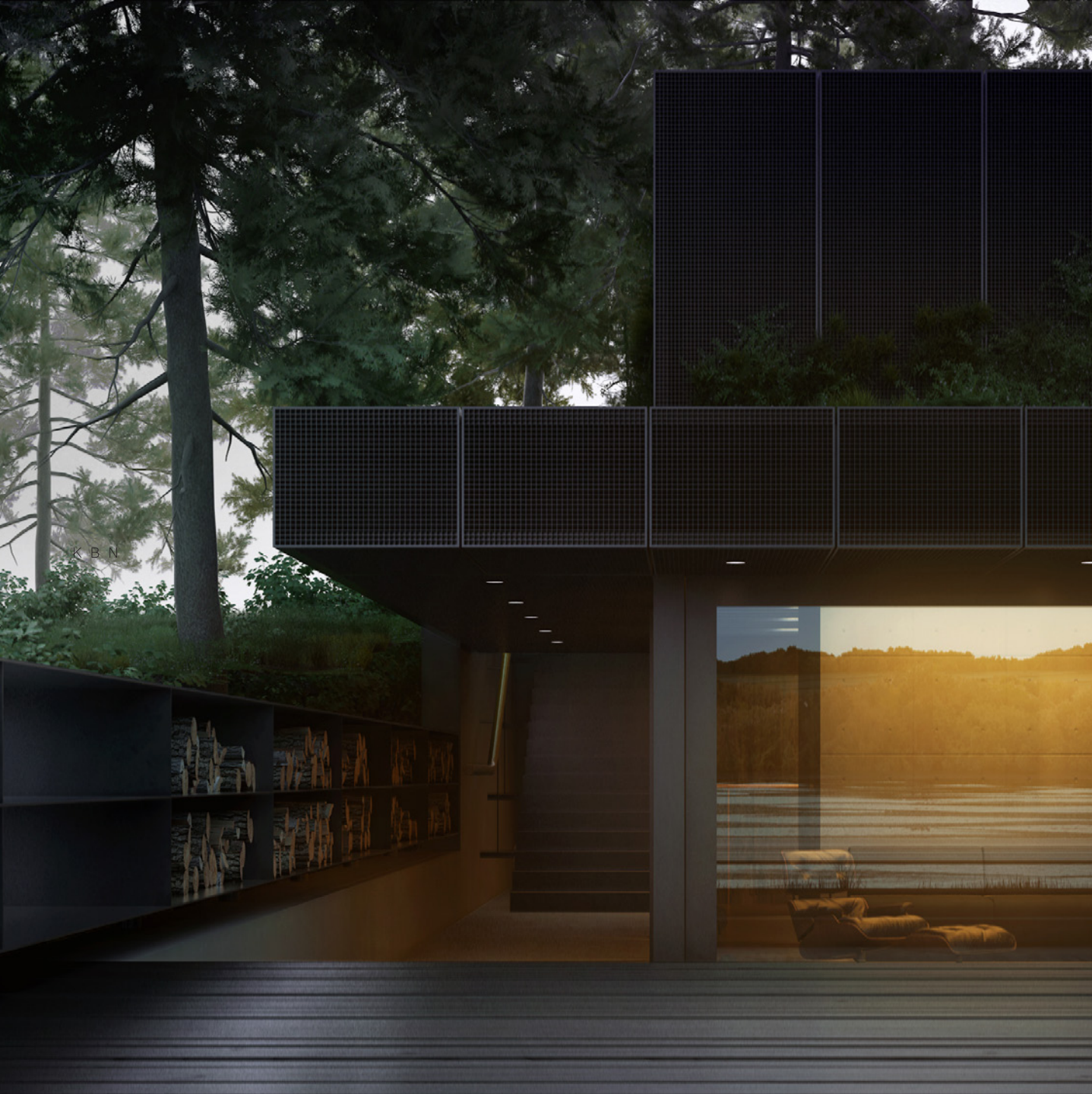
Disciplines: Architectural+Structural

Contractor: N/A

Nestled in between the picturesque landscape of Lac-Megantic, Quebec, is a quaint guesthouse that acts as an extension to the family's main dwellings.

The design intent for this project is to fully utilize the seasonal changes of the site by integrating nature into the built environment.

The family's main dwelling sits at the highest point of the site and is clearly broken off from the lake. The guesthouse on the other hand emerges from the hard landscape, slowly forming a transition between nature and architecture.



K B N

66 South Audley Street, London, UK

K B N

COEXISTENCE

Competition Entry **Hospitality

Location: Brooklyn, US

Typology: Hospitality

Scope: Competition Entry **Gold Mention

Disciplines: Architectural

Contractor: N/A

We believe in aging as a form of beauty.

The design explores concepts of both simplicity and complexity through the idea of a living process that ages with and within, rather than simply being a final product.

The design revolves on the construction of spatial representations of the flow of human experiences through appropriating natural and raw materials such as wood and glass.

Wood has an effortless way of expressing its age and history alongside the story of the human use and the climate interference, frameless glass has been selected to allow the user's experience to penetrate the surface that no longer allows the dominance of vision. We aim to atmospheres that allow the juxtaposition between natural and machine-made materials to create a sensation of duality between the sense of belonging and weightless.



K B N

Coexistence



B N

Coexistence

K B N

DESIGN GYMNASTIC

Product Design

Location: XXX

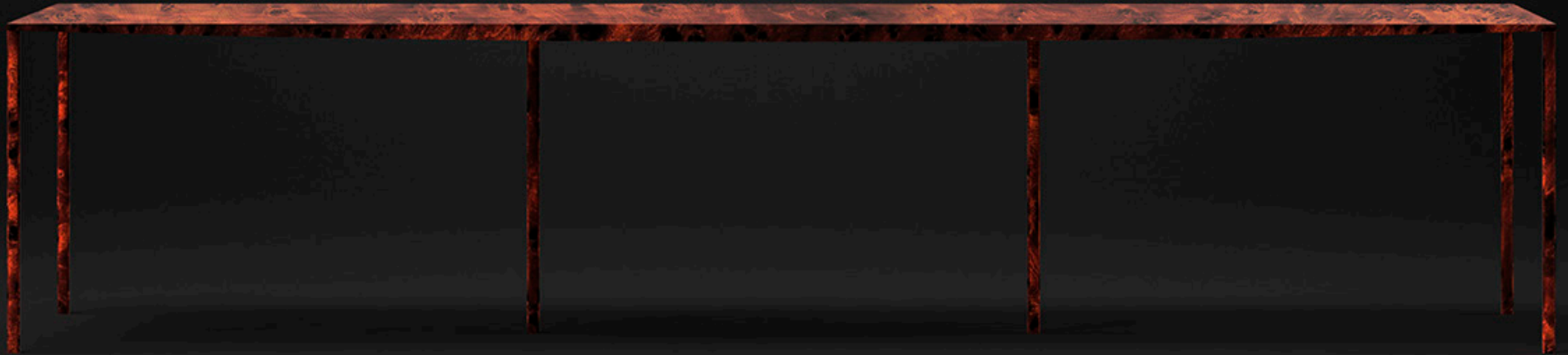
Typology: Product

Scope: Design

Disciplines: XXX

K B N

Burl Burl

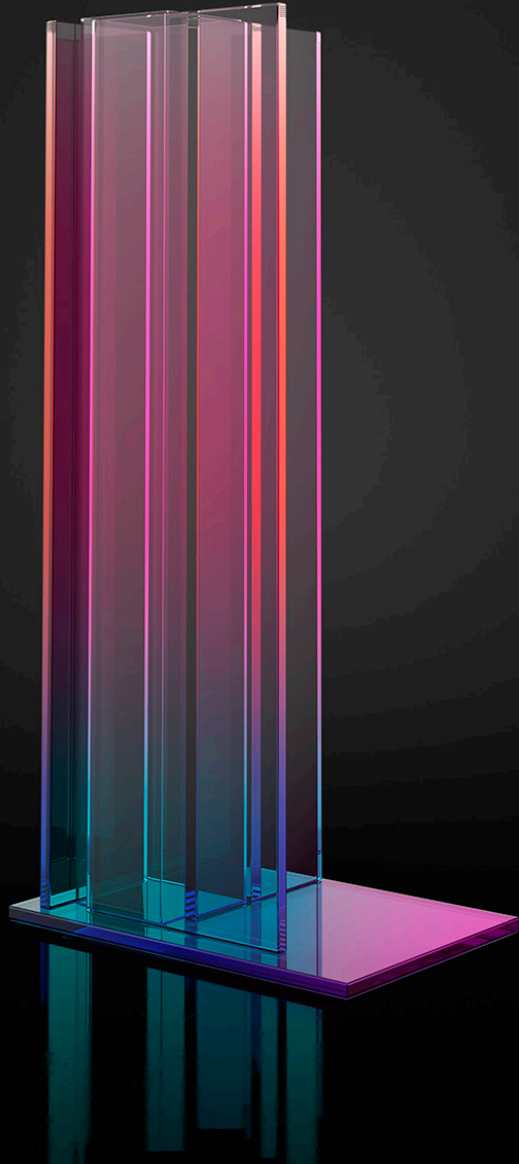


K B N

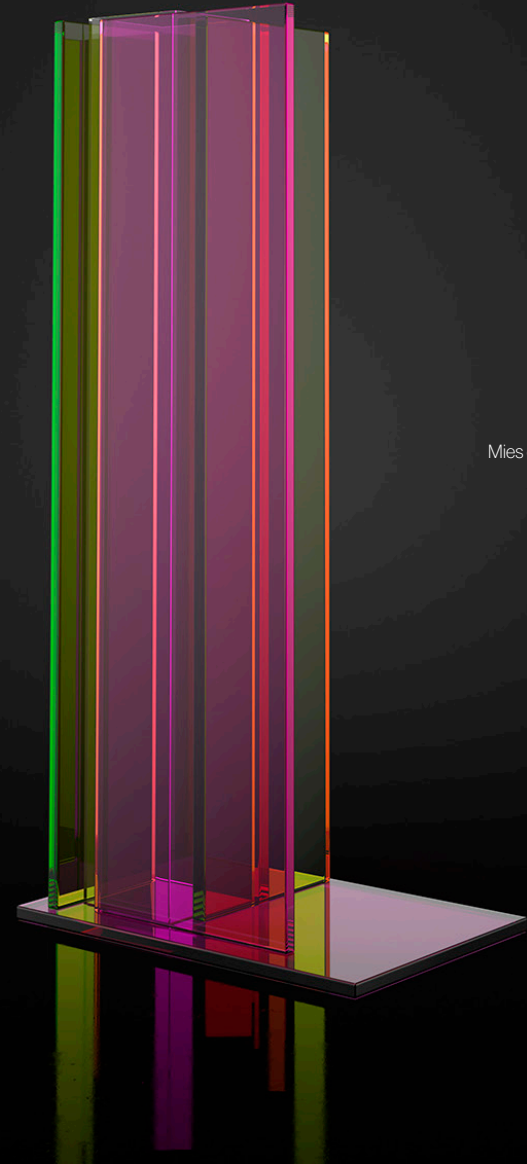


Landscapes

K B N



Mies on Steroids



US

2527A
8th Avenue
New York
NY 10030

+1 (646) 259-3030
+1 (347) 417-0096

UK

16A
West Avenue Road
London
E17 9SE

+44 7821 514012

info@kbn-services.com

