

FLDnormc[h]or(e)[ds]

Jocelyn Campbell

Instrumentation:

Clarinet in B \flat (doubling Bass Clarinet in B \flat)

Trumpet in B \flat

Piano

Accordion

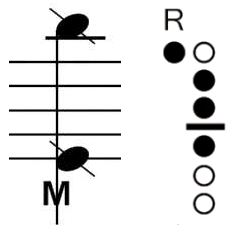
Double bass

Notes for performance:

General:

 Quartertones

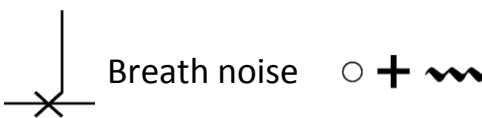
Clarinet:



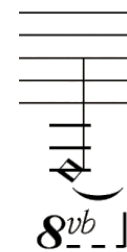
Multiphonic: the sound quality of this multiphonic can be fairly noisy and unstable, but the effect can be produced at a low dynamic level. It is used in this piece primarily for its textural character; its pitch content can be imprecise.

Trumpet:

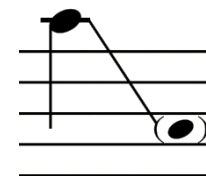
Mutes required: Harmon mute with stem and practice mute (NB. when using the practice mute the dynamics given in “ ” signify the relative effort that would usually be required to produce the stated dynamic rather than the resulting sound, which will be considerably quieter).

 Breath noise $\circ + \sim$ Rapid wah-wah effect with harmon mute

Piano:

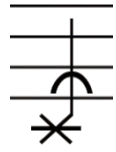


Dampen the string with finger, producing either a muted resonance or a harmonic, the point at which to dampen the string is up to the performer, a different dampening point may be chosen each time the technique is called for.

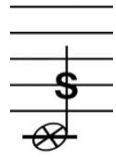


Guiro gliss.: toneless percussive technique produced by scraping a fingernail over the keys of the piano without depressing them (this can also be produced by scraping a fingernail across the front of the piano keys).

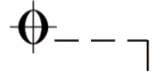
Double Bass:



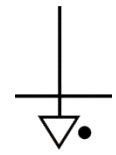
Bow the bridge: the open string on which to bow is indicated on the stave as normal



Scratch tone: bow with excessive pressure producing a mostly toneless scratching/rattling sound



Mute all strings with the palm of the left hand



Bow the tailpiece of the instrument: this should produce an effect of mostly soft white noise with a subtle resonance of the open string reverberating.

Duration: c. 11'-12'

Score is written in C

FLDnormc[h]or(e)[ds]

Jocelyn Campbell

6/4 with slight rubato

5/4

6/4

5/4

6/4

7/4

6/4

Clarinet in B \flat

Musical staff for Clarinet in B \flat . The staff contains rests for the first six measures. In the seventh measure, there is a half note with a dynamic marking of *p*. In the eighth measure, there is a half note with a dynamic marking of *p*. The piece concludes with a final chord marked with *p* and a fermata.

Trumpet in B \flat

Musical staff for Trumpet in B \flat . The staff contains rests for the first measure. From the second measure to the eighth, there are quarter notes with dynamic markings of *p*. The ninth measure contains a quarter note with a dynamic marking of *p*. The piece concludes with a quarter note with a dynamic marking of *p*. Above the staff, the instruction "breath only" is written.

Piano

Musical staff for Piano. The staff contains rests for the first six measures. In the seventh measure, there is a half note with a dynamic marking of *ppp*. In the eighth measure, there is a half note with a dynamic marking of *ppp*. The piece concludes with a half note with a dynamic marking of *ppp*. Above the staff, the instruction "dampen string with finger, producing muted resonance or harmonic" is written. Below the staff, the instruction "Ped. sempre" is written with an arrow pointing right.

Accordion

Musical staff for Accordion. The staff contains rests for the first measure. From the second measure to the eighth, there are quarter notes with dynamic markings of *p*. The piece concludes with a quarter note with a dynamic marking of *p*. Above the staff, the instruction "air button only" is written. A circled "ord." symbol is placed above the staff in the third measure.

Double Bass

Musical staff for Double Bass. The staff contains rests for the first measure. From the second measure to the eighth, there are quarter notes with dynamic markings of *p*. The piece concludes with a quarter note with a dynamic marking of *p*. Above the staff, the instruction "bow bridge" is written.

A

4/4 5/4 7/8 □ □ □ Δ 7/4 5/4

Cl. 8 *p* *p* *ppp* *p* *ppp* *p* *p*

Tpt. harmon mute with stem *p* *ppp* *p* *ppp* *p* *p* *ppp* *p*

Pno. *ppp* *p* *ppp* *p* *ppp* *p* *ppp* *p* *ppp*

Acc. *p* *ppp* *p* *ppp* *p* *ppp* *p* *ppp* *p* *ppp*

A

4/4 5/4 7/8 □ □ □ Δ 7/4 5/4

Db. *p* *p* *p* *ppp* *p* *ppp* *p* *ppp* *p*

B

5/4

4/4

5/4

6/4

3/4

7/8

□

□

△

3/4

Cl. *ppp* *p* *ppp* *< p >* *ppp* *p* *ppp* *< p >*

Musical notation for Clarinet (Cl.) showing a melodic line with various dynamics and articulations. The staff includes a measure rest at the beginning, followed by notes with slurs and dynamic markings. A trill is indicated above a note in the fourth measure.

Tpt. *ppp* *< p >* *ppp* *p* *ppp* *< p >* *< p >* *ppp*

Musical notation for Trumpet (Tpt.) featuring a melodic line with slurs, accents, and dynamic markings. It includes triplet markings and a measure rest.

Pno. *p* *ppp* *p* *ppp* *ppp* *ppp* *ppp* *ppp*

Musical notation for Piano (Pno.) with two staves. It includes chords, triplets, and dynamic markings. Percussion effects like guiro and 8va are indicated with arrows.

Acc. *p* *ppp* *p* *ppp* *p* *ppp* *< p >* *ppp* *p* *ppp*

Musical notation for Accordion (Acc.) with two staves. It features sustained chords and dynamic markings.

B

5/4

4/4

5/4

6/4

3/4

7/8

□

□

△

3/4

Db. *< p >* *< p >* *< p >* *< p >* *< p >* *< p >* *< p >*

Musical notation for Double Bass (Db.) with a single staff. It shows a bass line with slurs and dynamic markings. A 'sul I.' instruction is present above a note in the seventh measure.

21 C

3/4 7/8 □ □ △ 6/4 5/4 Bass Clarinet in B \flat 3/4

Cl. *tr* *p* *ppp* *p* *ppp* *p* *tr* *p*

Tpt. *p* *ppp* *p* *ppp* *p* *ppp* *p*

Pno. *guiro* *p* *ppp* *ppp* *ppp* *p* *ppp* *p*

Acc. *p* *ppp* *p* *ppp* *p* *ppp* *p* *ppp* *p* *ppp*

C

3/4 7/8 □ □ △ 6/4 5/4 3/4

Db. *p* *p* *p* *gliss.* *p* *poco sul pont.* *tr* *p*

sul pont.
should sound like a flock of seagulls
exact precision of fingered note and touchpoint is not required

27 D

3 **6** **3** **4** **5**
4 **4** **4** **4** **4**

B. Cl.

Tpt.

Pno.

Acc.

D

3 **6** **3** **4** **5**
4 **4** **4** **4** **4**

Db.

33

5/4 3/4 E 7/8 6/4

B. Cl.

Tpt.

Pno.

Acc.

Db.

ppp *p* *p* *ppp* *p*

ppp *ppp* *p* *ppp* *p* *ppp* *p* *ppp*

p *ppp* *p* *ppp* *p* *ppp* *p* *ppp*

p *ppp* *p* *ppp* *p* *ppp* *p* *ppp*

ppp *ppp* *p* *ppp* *p* *ppp* *p* *ppp*

practice mute

"p" "ff" "p"

sul pont.

sul pont.

Detailed description of the musical score: The score is for measures 33-40. It features five staves: B. Cl., Tpt., Pno., Acc., and Db. The B. Cl. staff starts with a 5/4 time signature, followed by 3/4, then a key signature change to E major (boxed 'E'), then 7/8, and finally 6/4. The Tpt. staff includes a 'practice mute' instruction. The Pno. staff shows complex chordal textures with dynamics ranging from ppp to mp. The Acc. staff provides harmonic support with chords and tremolos. The Db. staff features a melodic line with 'sul pont.' markings. Dynamics include ppp, p, and mp. Articulations include slurs, accents, and a triplet in the B. Cl. staff.

39

6/4

4/4

6/4

4/4

3/4

F

B. Cl.

Musical staff for B. Cl. showing a long note with a slur and dynamic marking *p*.

Tpt.

Musical staff for Tpt. showing dynamics *ff* and *p* with slurs.

Pno.

Musical staff for Pno. showing piano part with dynamics *pp*, *p*, and *mp*.

Acc.

Musical staff for Acc. showing piano accompaniment with dynamics *p* and *ppp*.

Db.

Musical staff for Db. showing double bass part with dynamics *pp* and *sul pont.*.

6/4

4/4

6/4

4/4

3/4

F

ord.

sul pont.

sul IV.

45

3
4

B. Cl.

Tpt.

Pno.

Acc.

3
4

5
4

ord.

Db.

Detailed description of the musical score: The score is for measures 45 to 50. It features five staves: B. Cl. (Bass Clef), Tpt. (Treble Clef), Pno. (Grand Staff), Acc. (Grand Staff), and Db. (Bass Clef). The B. Cl. part starts with a 3/4 time signature and has a *p* dynamic. The Tpt. part has dynamics of *p*, *ff*, and *p*. The Pno. part has dynamics of *pp*, *p*, *pp*, *mp*, *pp*, *p*, and *p*. The Acc. part has dynamics of *p*, *ppp*, *p*, *ppp*, *p*, *ppp*, *p*, and *ppp*. The Db. part has a 3/4 time signature and an *ord.* marking. The time signature changes to 5/4 at measure 49.

51

G

3/4 **4/4** **3/4** **5/4**

B. Cl.

Tpt.

Pno.

Acc.

Db.

pp *p* *pp* *p* *pp* *p* *pp* *p*

ff *p* *ff* *p*

pp *p* *pp* *p* *pp* *p* *pp* *p*

p *ppp* *p* *ppp* *p* *ppp* *p* *ppp* *p* *ppp* *p* *ppp*

G

3/4 **4/4** **3/4** **5/4**

sul pont. ord. sul pont.

H

4
4

X

long
c. 20''

4
4

58

B. Cl.

Clarinet in B \flat

pp ————— *mf* < *ff*

Tpt.

harmon mute
with stem +

pp ————— *mf* < *ff*

Pno.

pp

p

pp

mp

mp

Acc.

ppp

< *p* > *ppp*

< *p* > *ppp*

< *mp* > *ppp*

< *mf* > *ppp*

< *f* > *ppp*

H

4
4

X

long
c. 20''

4
4

Db.

ord.

p

ppp

mf

< *ff*

4/4 = 52
Tempo giusto

64

Cl. *ppp* < *p* > *ppp* 3 *p* *ppp*

Tpt. practice mute 3 *pp* *ff* *pp* 3 *ff* *pp*

Pno. *mp* 3 *pp* 3 *p*

(*Red.*) sempre → (until b.91)

change ∇ at approx points marked

(8)

Acc. *pp*
C major

4/4 = 52
Tempo giusto

Db. *pp*

I

71

Cl.

Tpt.

Pno.

p *ppp* *ff* *pp* *mp* *mf* *p* *mp* *mf* *p*

(8)

Acc.

p *p*

C major
E major

I

Db.

pp *p*

Più mosso
(♩ = c.60-63)

J

78

Cl.

tr

mp

ppp

ppp

p

ppp

Tpt.

pp

senza sord.
strike mouthpiece with palm

f

harmon mute
with stem

from open to closed
as fast as possible

ppp

Pno.

mp

pp

8va

8vb

f

Acc.

mp

mf

p

Più mosso
(♩ = c.60-63)

J

Db.

mute all strings with palm

pizz.

sul II

mf

f

scratch tone

p

3
4

4 **Meno mosso**
(♩=52)

84 *tr*

Cl. *mf* *ppp* *sfp* *sf mp* *mf* *p*

Tpt. *mf* *ppp* *sfp* *mf* *sfp* *ppp* *p* *mf* *p*

Pno. (8) *mp* *mf p*

Acc. *ppp* *p* *sfz p*

Db. *sul I* *sul IV* *arco* *change bow when necessary*

C major
E major
D major

C major
E major
D major
F# major

3
4

4 **Meno mosso**
(♩=52)

2
4

4 Più mosso
4 (♩ = c.60-63)

89

Cl.

Tpt.

Pno.

Acc.

Db.

f *p* *ppp* *p* *ppp* *tr*

f *p* *ppp* *sfp* *sf mp*

mp *f* *mp* *mf* *f* *pp*

mf *f* *mf* (Ped.) *8va* *pp*

f *mp* *ppp* *p* *ppp* *p*

f *ff* *p* *sul I* *pizz.* *3*

breath only

air only

8va

8vb

(Ped.)

sul I

pizz.

3

5

4/4 **Meno mosso** K (♩=52)

Cl. 95 (tr) *sfp* *mf* *sf mp* *sfp* *ppp* *mf*

Tpt. *mf* *sfp* *ppp* breath only *f* *mf*

Pno. (8) *mf* *f* *mf* *8vb* *cresc.* *dim.* *ad lib.* *mf* (Ped.) *f* *sounding*

Acc. *air only* *f* *sfz pp* *mf legato*

5

4/4 **Meno mosso** K (♩=52)

Db. *mf* *f* *mf legato*

- C major
- E major
- D major
- F# major

99

Cl. (tr) *p* *f* *p*

Tpt. *p* *f* *p* *f*

Pno. *f* *mp* *mf* *f* *mp*

Acc. *p* *sfz*

Db.

Detailed description of the musical score: The score is for measures 99, 100, and 101. The Clarinet (Cl.) part starts with a trill (tr) on a dotted quarter note, followed by a triplet of eighth notes (p), then rests, and then a triplet of eighth notes (f) followed by another triplet (p). The Trumpet (Tpt.) part begins with a triplet of eighth notes (p), followed by rests, then a triplet of eighth notes (f) with accents, and then rests (p). The Piano (Pno.) part features a melody in the right hand with triplets and a bass line in the left hand with a continuous triplet of eighth notes. Dynamics range from f to mp. The Accordion (Acc.) part has a sustained chord in the left hand and a rhythmic pattern in the right hand, including a sfz triplet. The Double Bass (Db.) part has a melodic line with a dashed line indicating a continuation or breath mark.

Più mosso

(♩ = c.60-63)



102

Cl.

Cl. staff: Treble clef, starting with a whole rest. A dynamic marking *ppp* is written below the staff. A slur covers the first two measures, with a *p* marking below it. A second slur covers the next two measures, with a *ppp* marking below it. The staff continues with a trill marked *tr*, followed by a series of eighth notes with a *ppp* marking, then a *sfp* marking, and finally a *mf* marking.

Tpt.

Tpt. staff: Treble clef, starting with a whole rest. A dynamic marking *f* is written below the staff. The staff continues with a series of eighth notes with a *ppp* marking, then a *sfp* marking, then a *mf* marking, then another *sfp* marking, and finally a *ppp* marking. There are also trill markings above the staff.

Pno.

Pno. staff: Grand staff (treble and bass clefs). The right hand has a *pp* marking. The left hand has a *f* marking. The piece features complex textures with many triplets and tremolos. A pedal instruction is present: *(Ped.) sempre (until b.111)* with a dashed line and a *sub* marking.

Acc.

Acc. staff: Grand staff (bass and treble clefs). The bass clef part has an *air only* marking and a triplet of eighth notes. The treble clef part has a whole rest.

mp

Più mosso

(♩ = c.60-63)

Db.

Db. staff: Bass clef. The piece starts with a *ff* marking. It includes a *pizz.* marking, a triplet with a *p* marking, and a *sul IV* marking. The staff continues with eighth notes and triplets.

L **Meno mosso**

(♩=52)

Violin bowing diagram showing bowing patterns for the strings, with notes represented by circles and stems.

Cl. 107 (tr) *sfp* *ppp* *sfp* *mf*

Clarinet staff with melodic line, trills, and dynamic markings.

Tpt. *sfp* *mf* *sfp* *ppp* *f*

Trumpet staff with melodic line and dynamic markings.

Pno. *ppp*

Piano accompaniment with triplets and dynamic markings.

Acc. *ppp* L.H. *ppp*

Accompaniment for harp or celesta with dynamic markings.

Db. *p*

Double Bass staff with dynamic markings and performance instructions.

Meno mosso

L (♩=52)

C# dominant 7
G# minor
with G# bass key

Più mosso

(♩ = c.60-63)

110

Cl. *p* *f* *p* *ppp*

Tpt. *p* *f* *p* *f*

Pno. *f* *mf* *f*

Acc. *f* *f*

Db. *f* *ff* *p*

8^{vb} | *mp*

ord. →

sul tasto →

Meno mosso

(♩=52)

114

Cl. *p* *ppp* *sfp* *mf* *p* *f* *p*

Tpt. *ppp* *sfp* *mf* *ppp* *sfp* *mf* *p* *f* *p*

Pno. *pp* *ppp* *f* *f* *8vb*

Acc. *f*

Meno mosso

(♩=52)

Db. *pizz.* *p* *sul IV* *mp* *f* *ord.*

arco *sul tasto*

119

Cl.

Tpt.

Pno.

Acc.

Db.

senza sord.

f *p* *f*

3

Detailed description of the musical score: The score is for measures 119-122. The Clarinet (Cl.) and Trumpet (Tpt.) parts play a rhythmic pattern of eighth notes, with dynamics ranging from *f* to *p*. The Piano (Pno.) part features a complex texture with triplets and slurs in both hands. The Accordion (Acc.) part consists of three staves, with the top staff playing chords and the bottom two staves playing rhythmic accompaniment. The Double Bass (Db.) part provides a simple bass line with a triplet at the end of the section. The key signature has one sharp (F#), and the time signature is 3/4.

c. 10"

122

Cl. *p* *ff* *p*

Tpt. *p* *ff* *p*

Pno. *ff*

Acc. *ff* *pppp*

Db. *ff*

pp
U.C. until end
Red. ad lib.
8va

ppp

bow the tailpiece change bow when necessary

ppp

3/4

3/4

Detailed description: This page of a musical score contains five staves. The Clarinet (Cl.) and Trumpet (Tpt.) staves feature melodic lines with dynamics ranging from piano (p) to fortissimo (ff), including triplet markings. The Piano (Pno.) part has a complex texture with triplets and a forte (ff) dynamic. The Accordion (Acc.) part is divided into two systems, with the upper system playing chords and the lower system playing a bass line, both marked fortissimo (ff). The Double Bass (Db.) part has a simple bass line marked fortissimo (ff). Performance instructions include 'pp U.C. until end Red. ad lib.' with an arrow, '8va' for the piano part, and 'ppp' for the accordion. Bowing instructions for the double bass include 'bow the tailpiece' and 'change bow when necessary' with a diagram showing bow changes. The time signature 3/4 is indicated on both sides of the page.

127

Pno.

3/4 3/4

rall. 3/4 3/4

Acc.

(8)

Db.

3/4 3/4

rall. 3/4 3/4

Detailed description of the musical score: The score is divided into three systems. The top system is for the Piano (Pno.), the middle for the Accordion (Acc.), and the bottom for the Double Bass (Db.). The Pno. part consists of six measures, each with a chord in both hands and a wavy line with an upward-pointing arrow. The time signature is 3/4 for the first two measures and 3/4 for the last two. A 'rall.' marking is above the last two measures. The Acc. part has a melodic line with eighth notes and a bass line with thick, overlapping lines. A circled '8' is above the first measure. The Db. part has a bass line with wavy lines and downward-pointing arrows. The time signature is 3/4 for the first two measures and 3/4 for the last two. A 'rall.' marking is above the last two measures.

c. ♩=40

3

3
4 or slower

fade slowly to nothing

133

Pno.

pppp

lv.

(8)

Acc.

c. ♩=40

3

3
4 or slower

fade slowly to nothing

Db.