

**Caleb Shafer**  
*portfolio*

## Contents

Solarhouse	4
Behind the Curtain	14
Tensta	24
Dorcas International	34
Absorb	42
Tree Lab	46
Campus Building	50



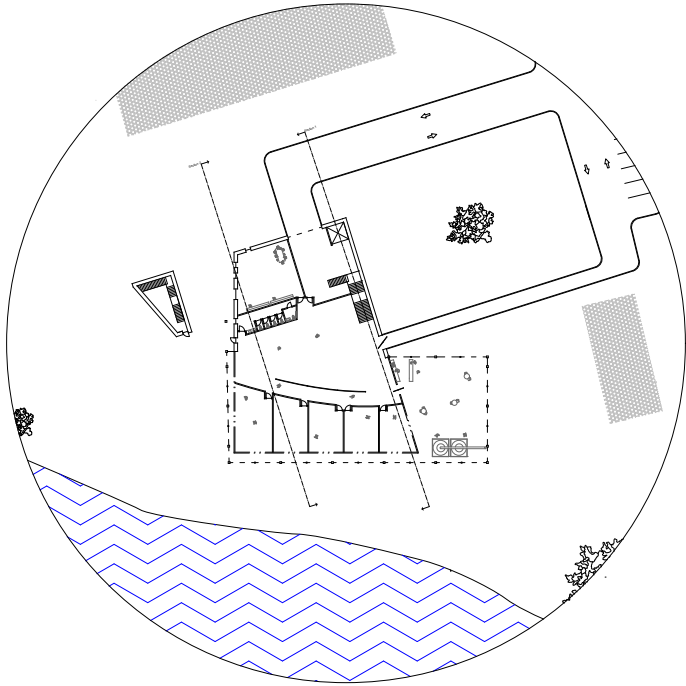
## Solar House

*A laboratory for solar experimentation*

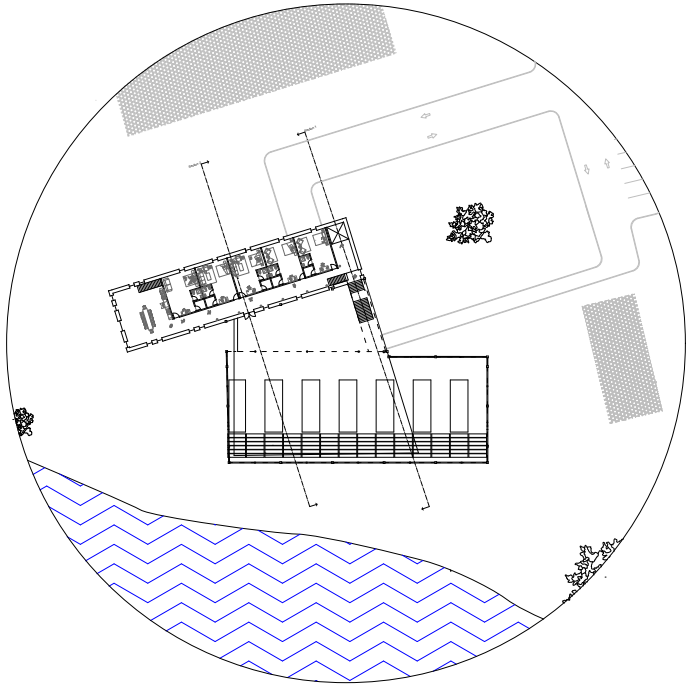
A combined structure meant to house both scientists and artists with their studios within the same space. The building is marked by a large glass Solar House that sits on the southern side of the facade, meant to collect solar energy. This building features parabolic troughs intended to collect concentrated solar energy to power the building. The site is meant to work with the natural landscape of the Blackstone River Valley.



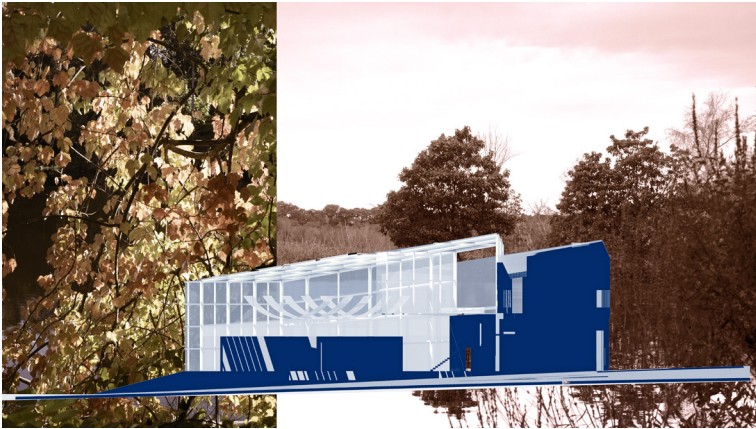
*south elevation*



Ground floor plan

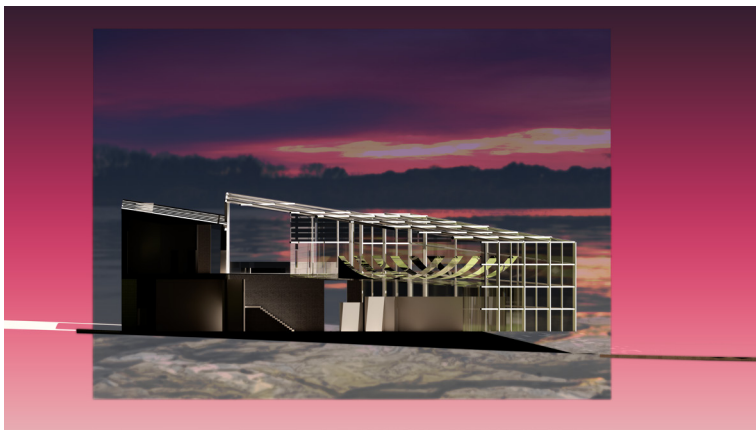


*2nd floor plan*

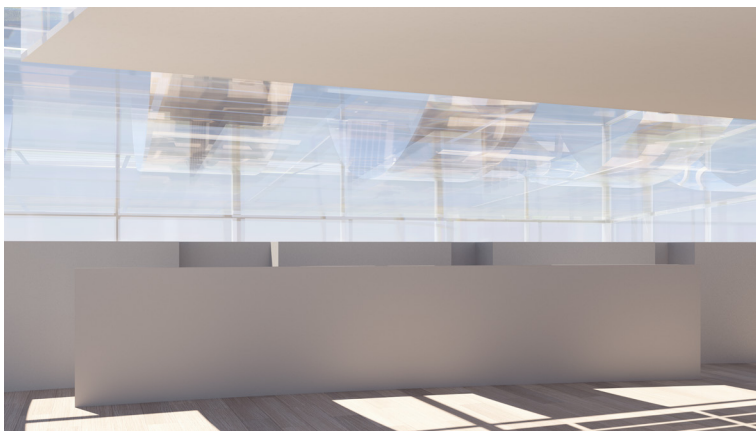


*section one*

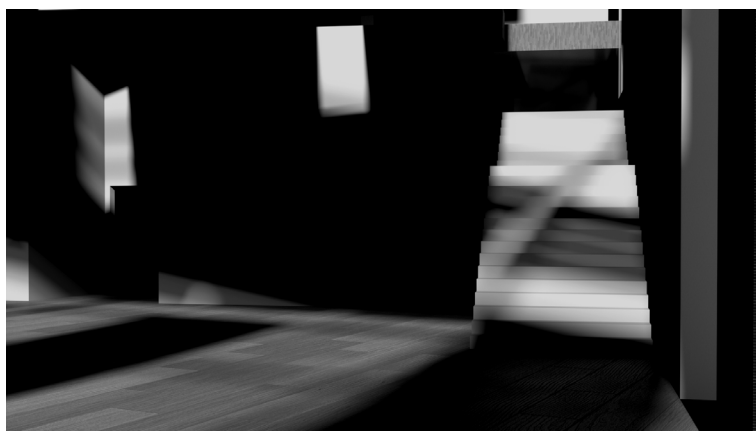




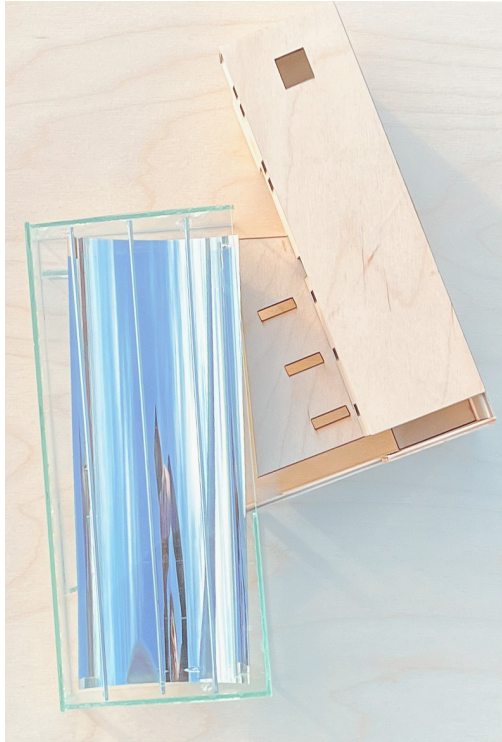
*section two*



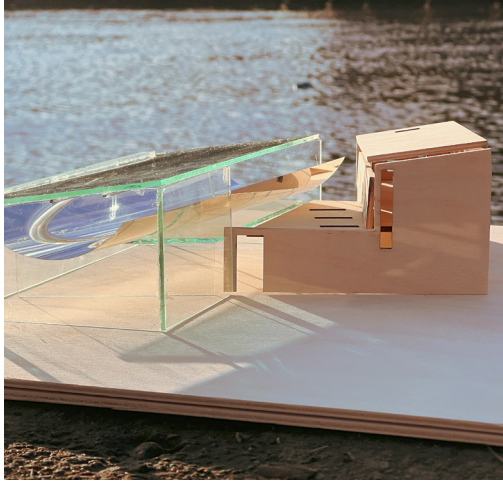
*perspective*



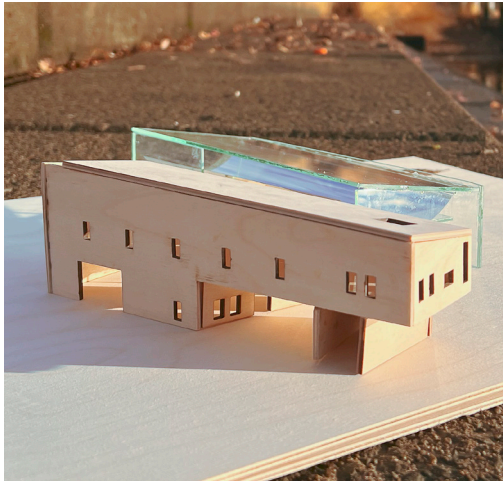
*perspective*



*model*



*model*



*model*

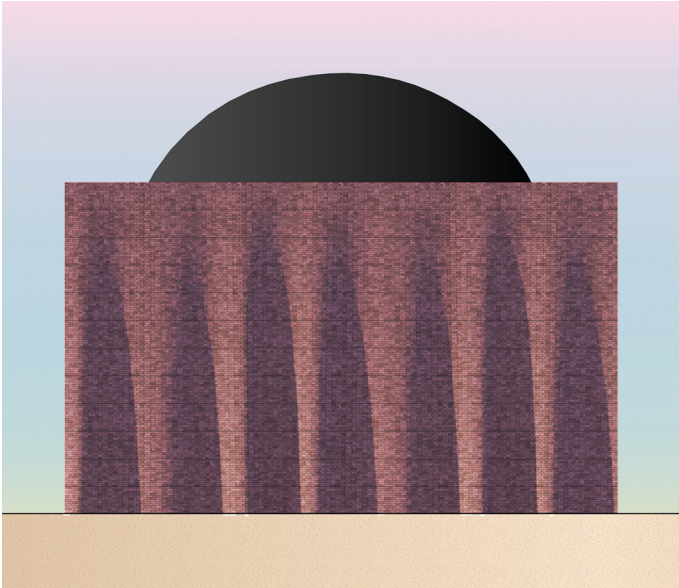
## Behind the Curtain

*A theater of sleep*

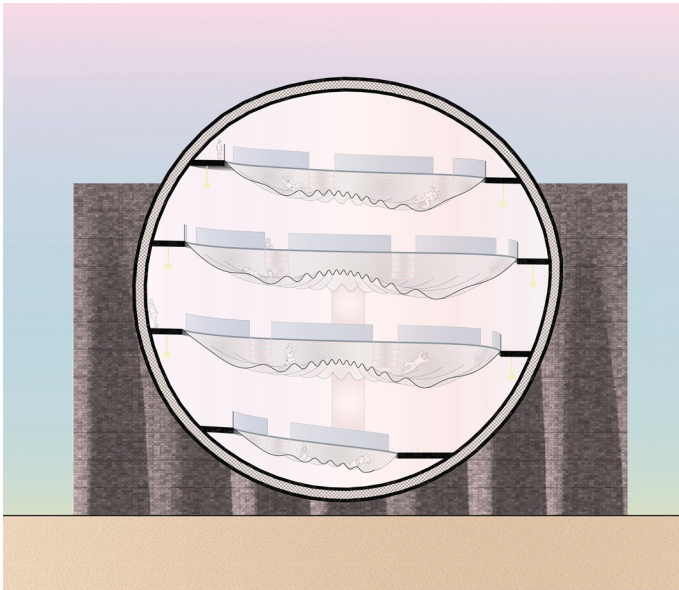
Off-Broadway, a black, misshapen orb sits. It seems to have descended from the sky, wedged between two sinuous brick walls—a sanctuary amidst the urban stimulus. There are no windows; it is a place for inward reflection, a fortress.

It aspires not to be seen as an unwelcome intruder but rather as a benevolent companion, offering the most fundamental comfort: sleep.

Welcome to all at any hour. It is a communal haven for rest, equipped with necessary hygienic amenities. Beyond mere respite, this compacted sphere evolves into a beacon of support, guiding its visitors toward securing permanent abodes, embodying the essence of public access sleep spaces.

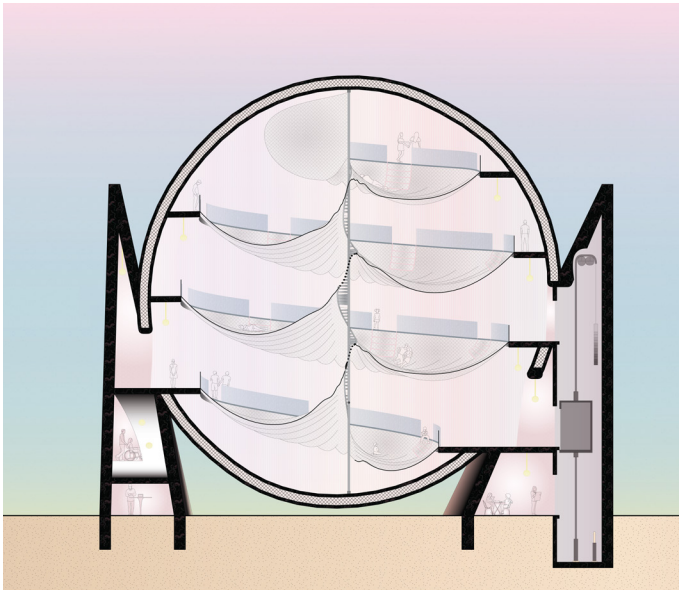


*elevation*



*north section*

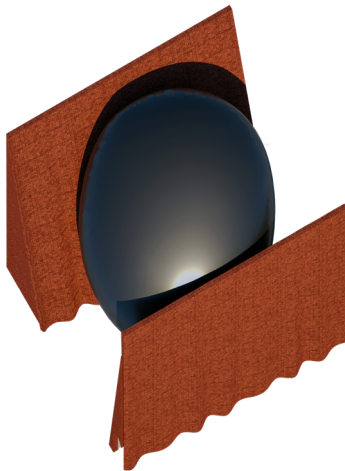




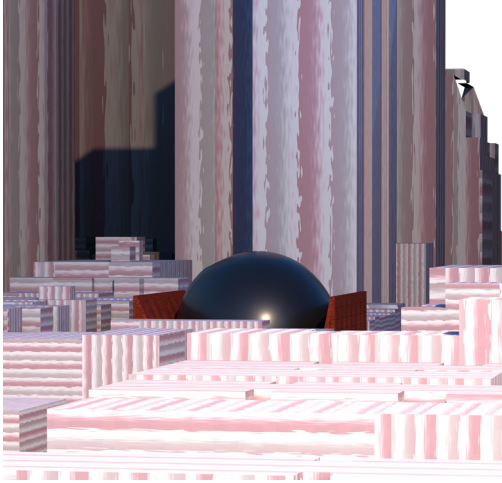
*west section*



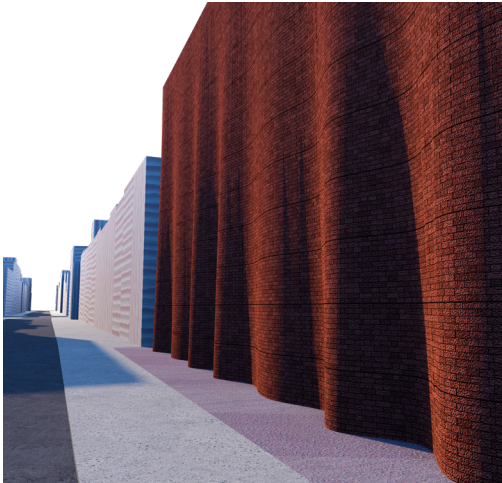
*site axon*



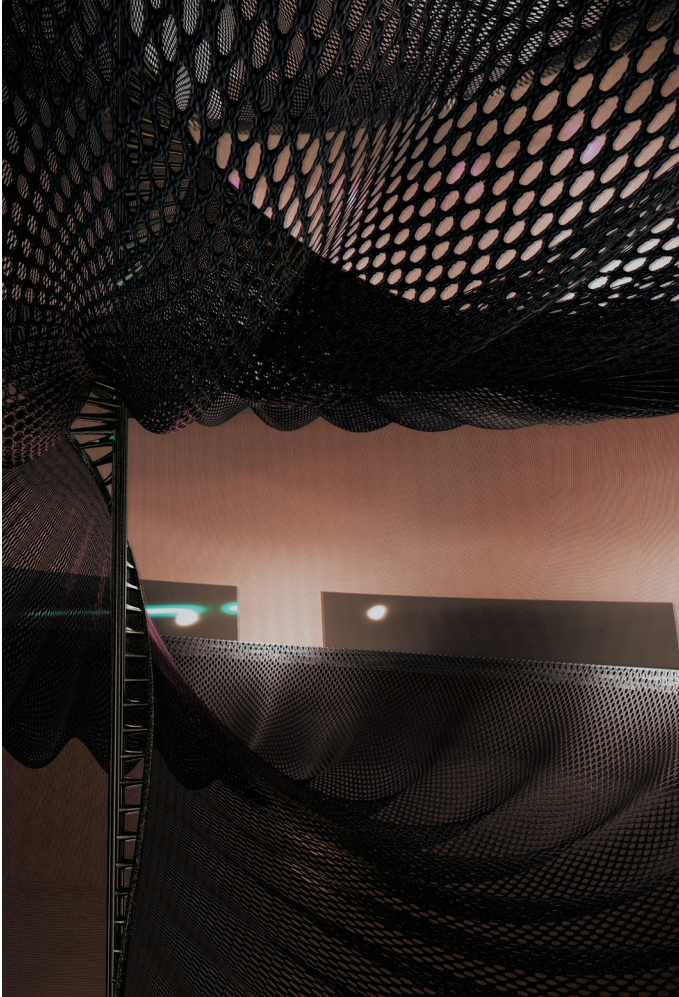
*building axon*



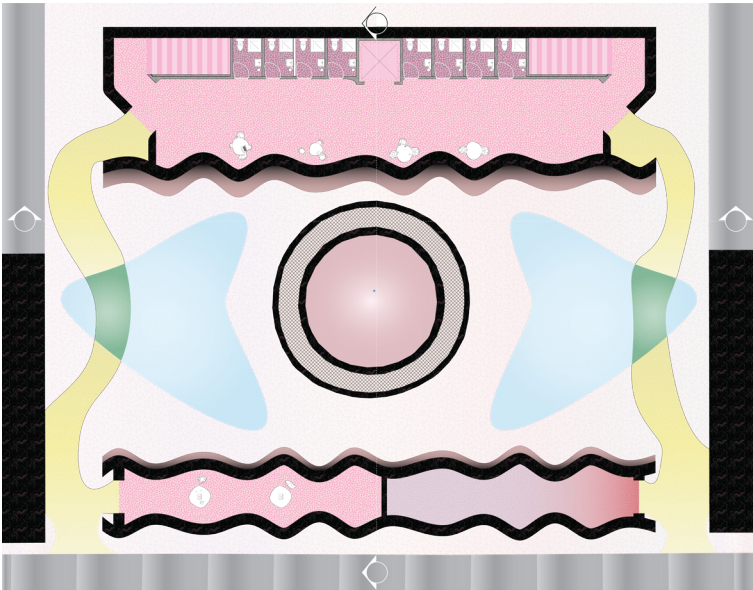
*perspective*



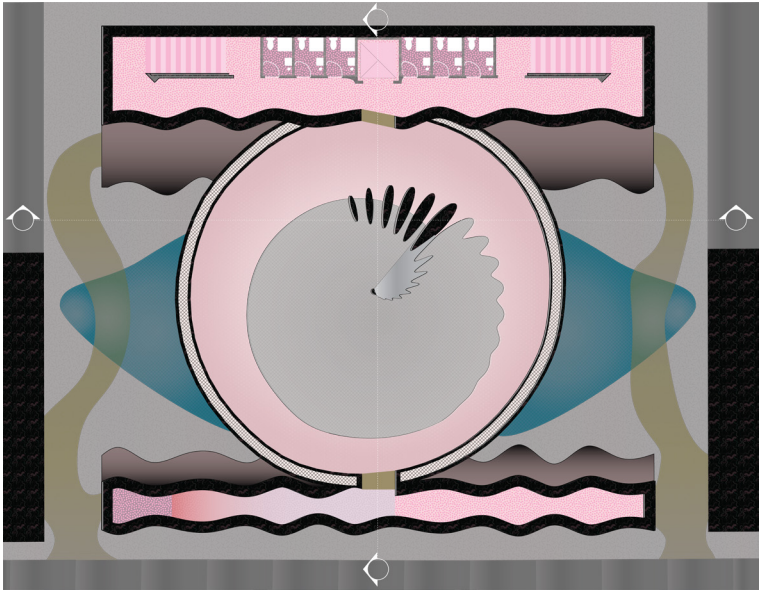
*perspective*



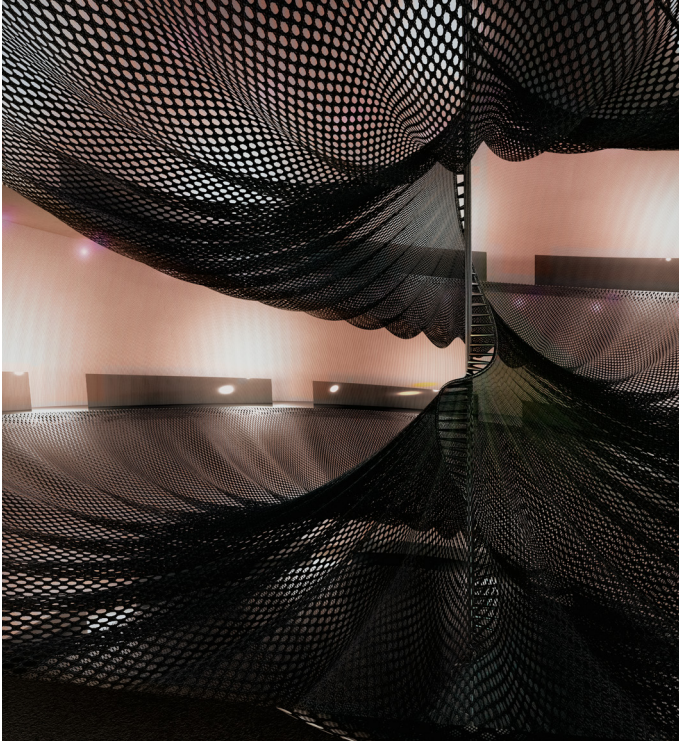
*interior perspective*



*ground floor plan*



*second floor plan*



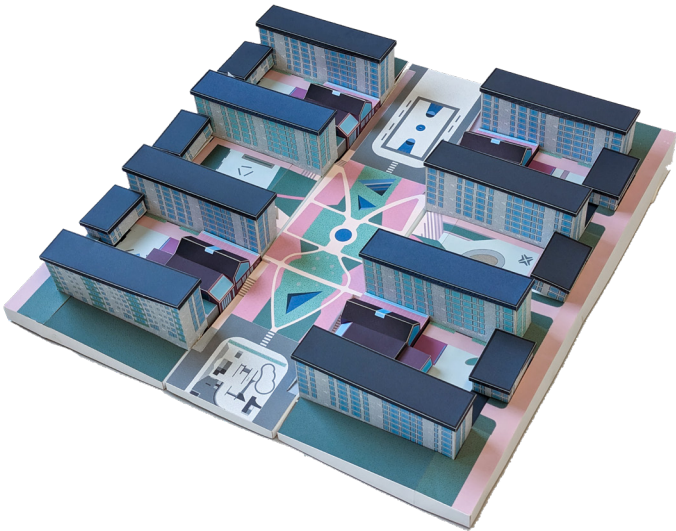
*interior perspective*

## Tensta

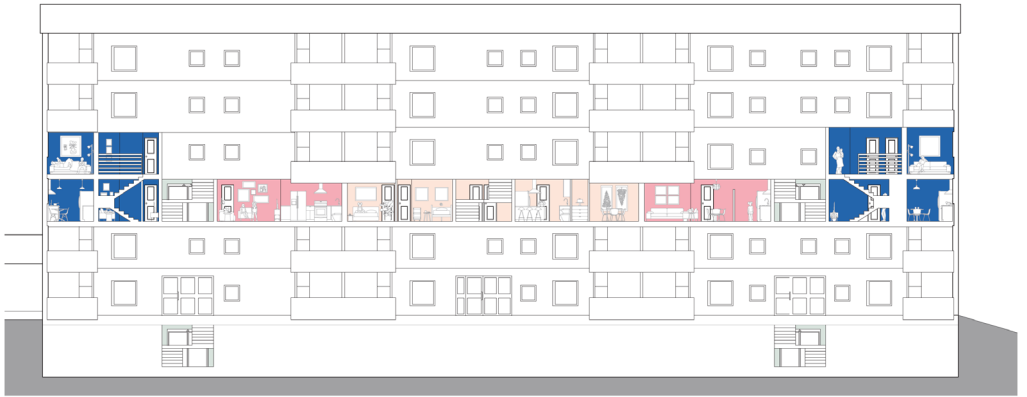
*A reimagining of public housing*

This project is a redesign of the Tensta neighborhood in Stockholm's Västerort, developed as part of the Million Program, currently home to 18,500 residents. We aimed to address the challenges of better public transit access and underutilized parking areas. Our design aimed to improve accessibility and foster community engagement through several key initiatives: reconfiguring interior layouts for better navigation, making playgrounds accessible from street level, transforming four out of six parking garages into dynamic public spaces, and revitalizing Tensta for its diverse inhabitants.

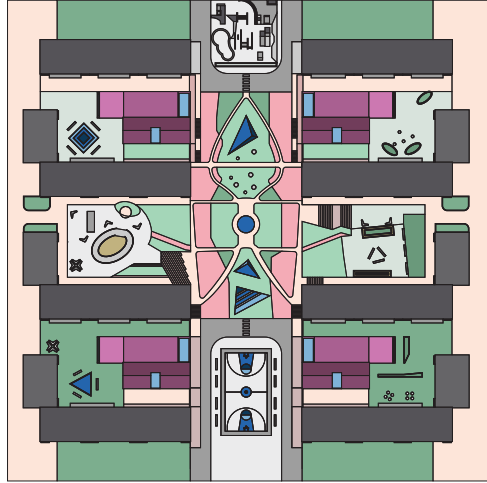




*paper model assembled*



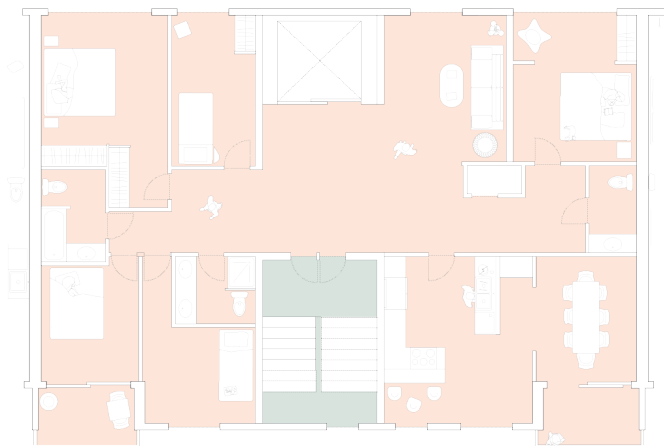
*section*



site plan



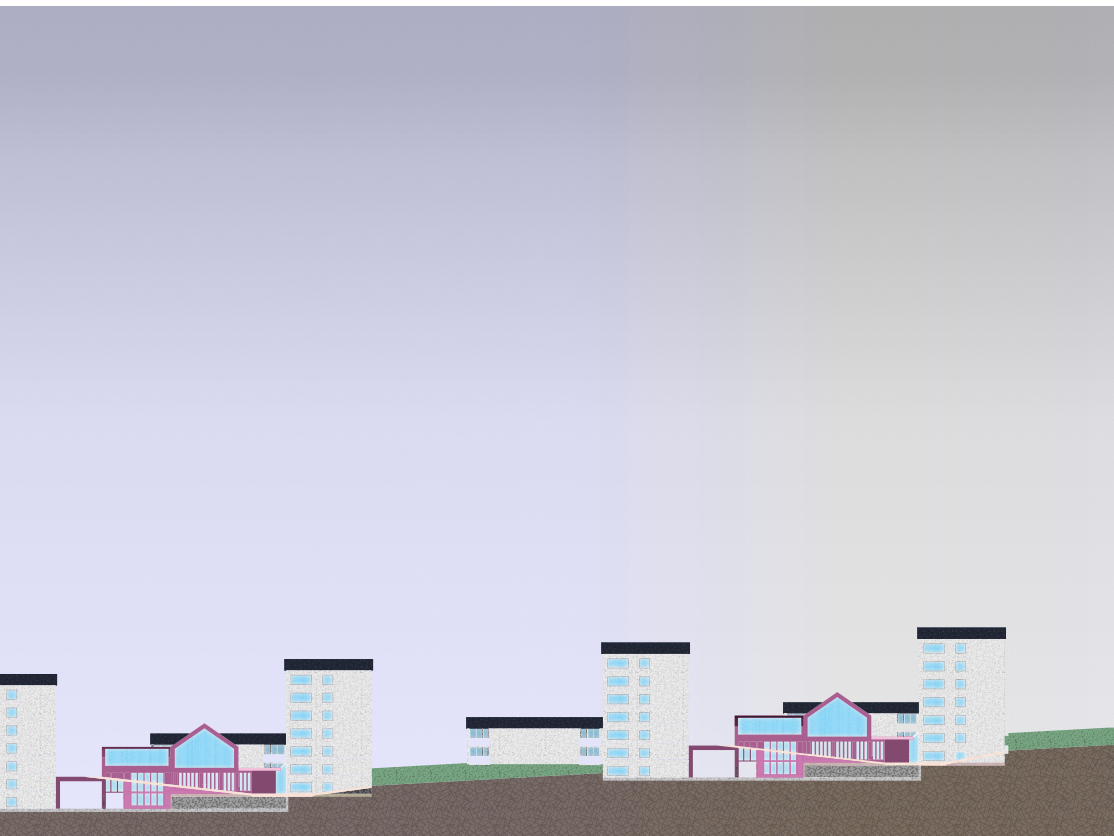
floor plans



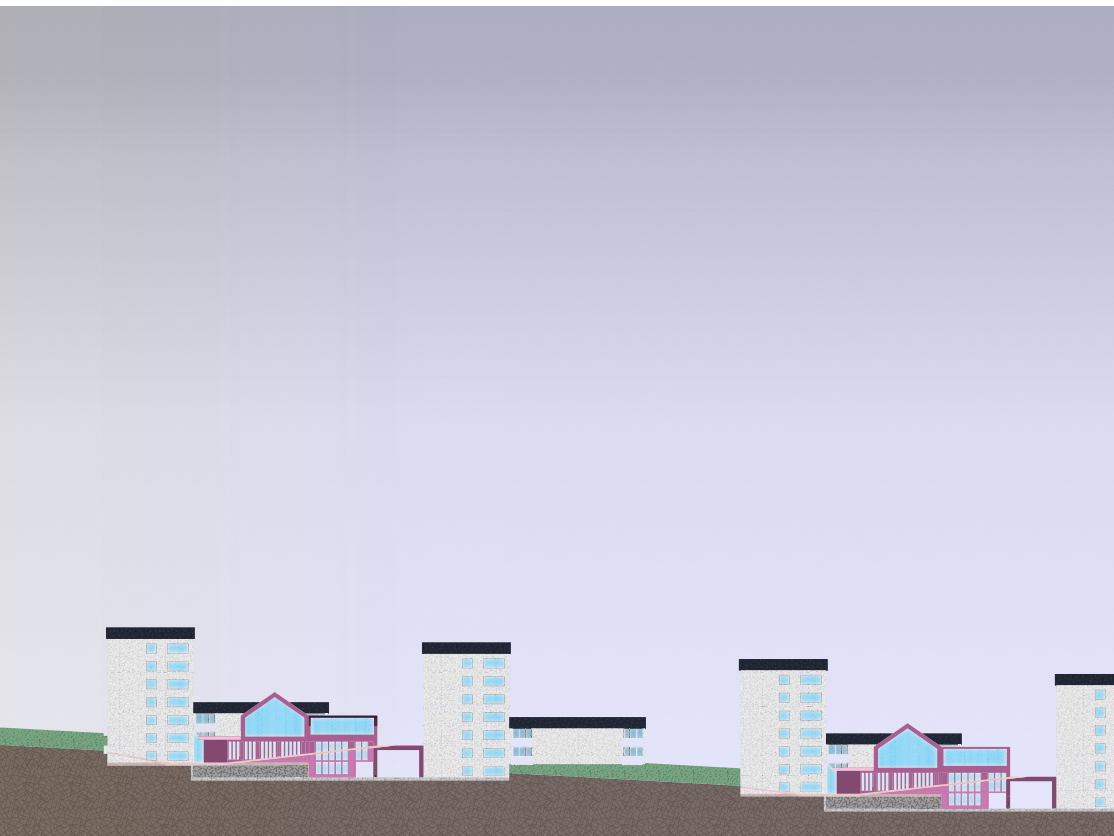
*floor plan #1*

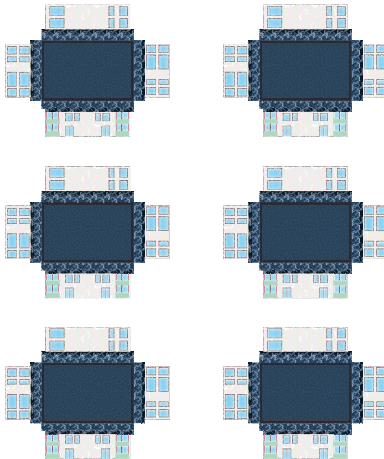
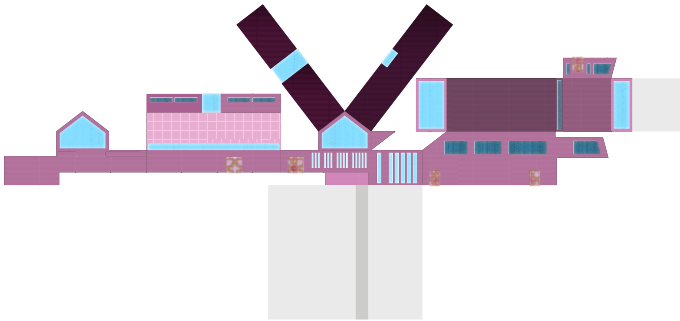
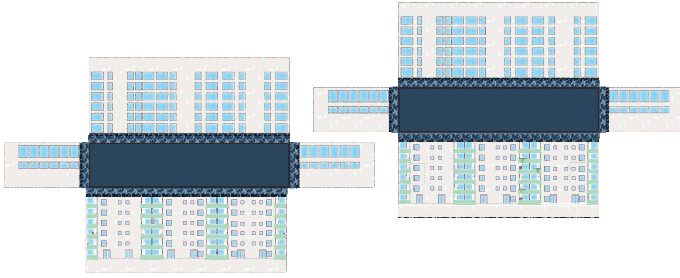


*floor plan #2*

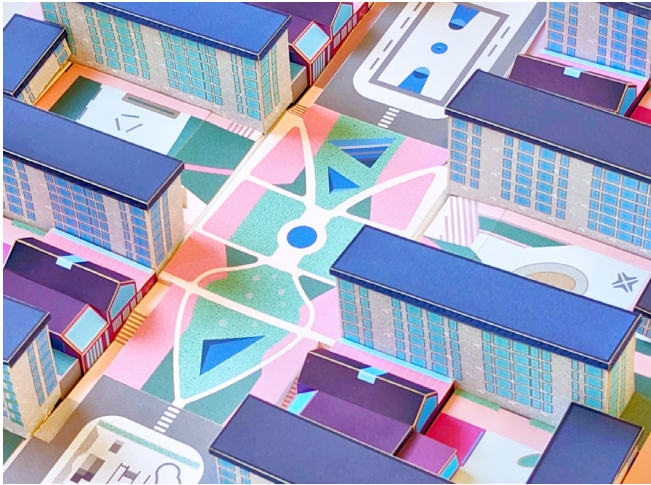


*split elevation*







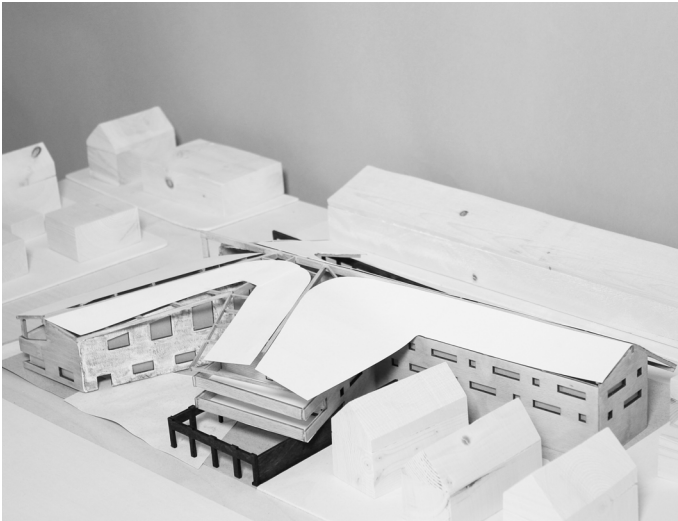


*model perspective*

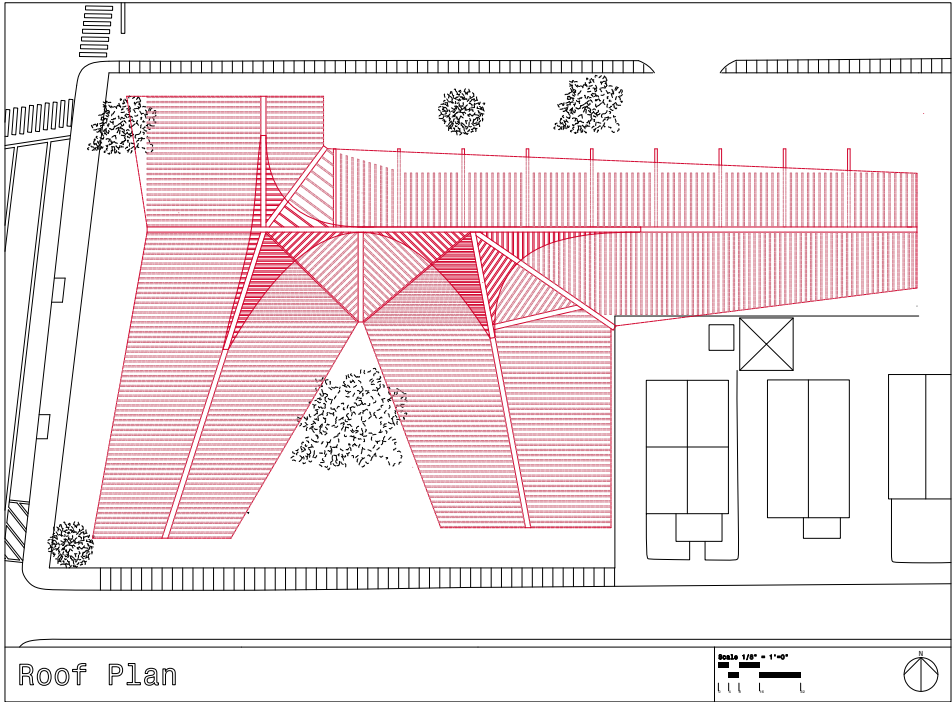
## **Dorcas International**

*Immigration center housing addition*

The Dorcas International project was an addition onto the existing building that focused on multi-unit temporary housing for immigrants to accommodate a variety of different family structures and cultures within. I focused on creating a comforting environment for those residing within the center, including a multi-pitched roof and interior courtyard that helped to bridge both new and old buildings together. One wing of the first floor included a child care center as well as a library and classrooms for the building's residents to utilize.



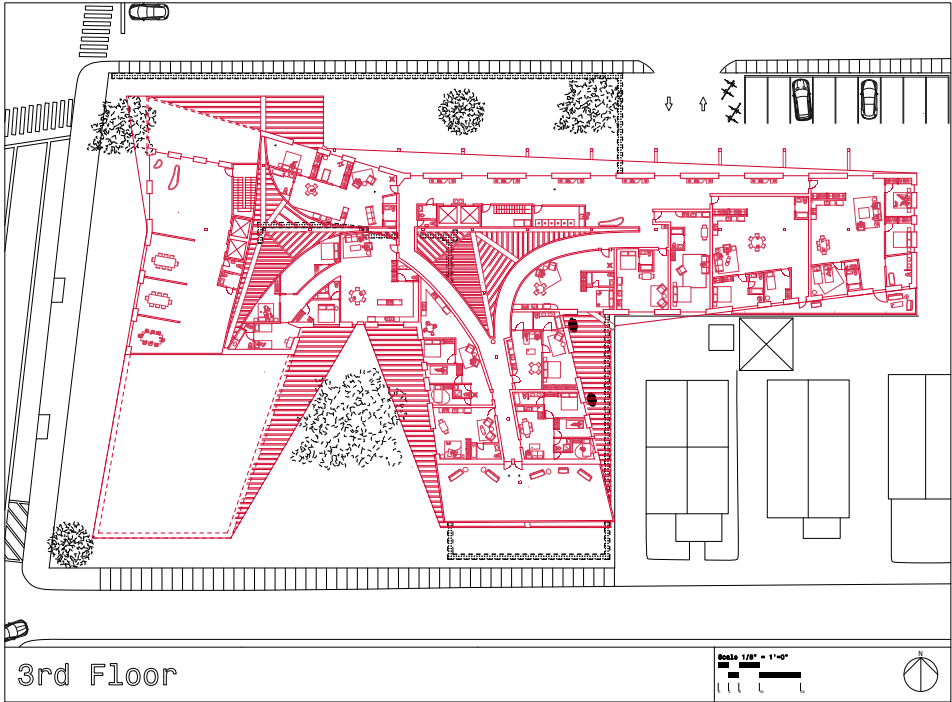
*model, roof perspective*

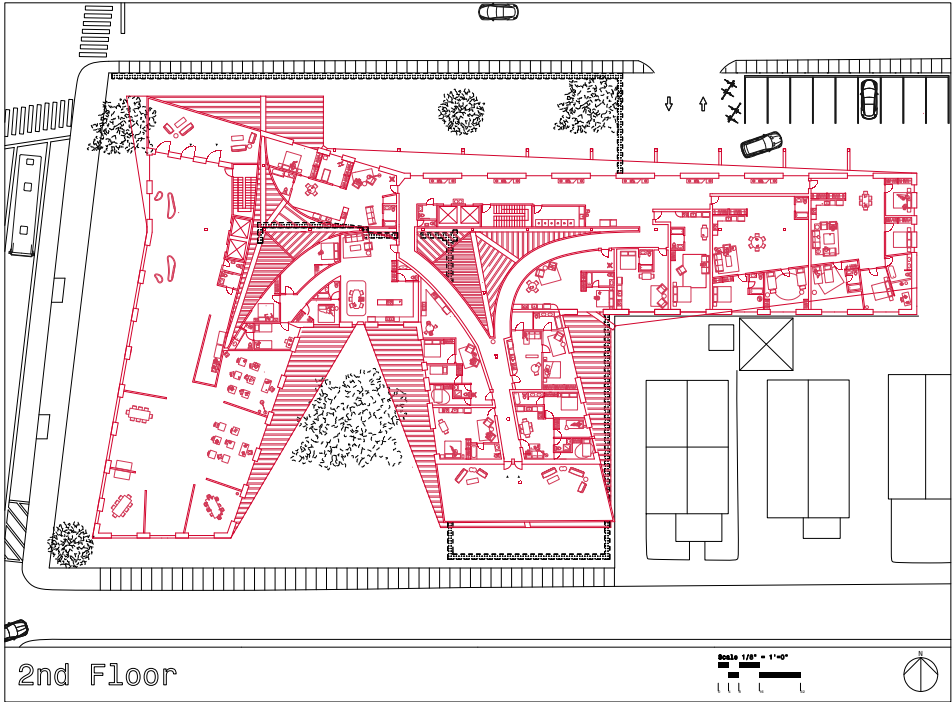


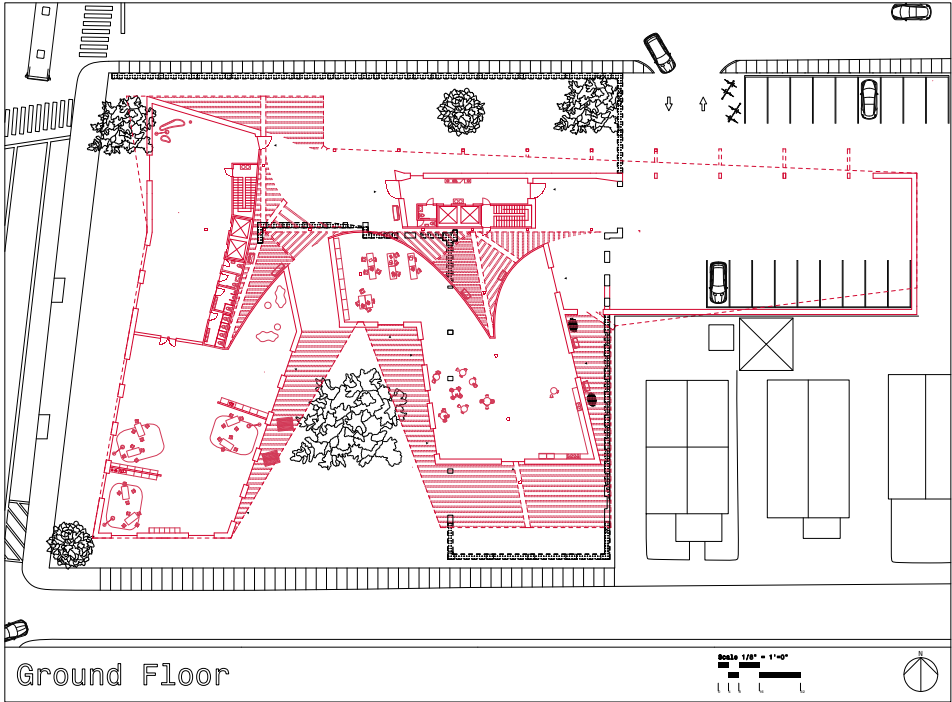
Roof Plan

Scale 1/8" = 1'-0"











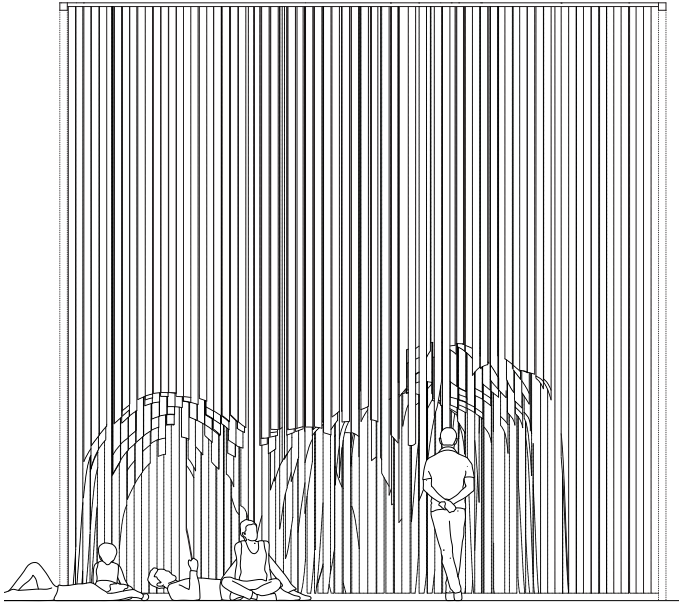




## **Absorb**

*An open space that captures sound*

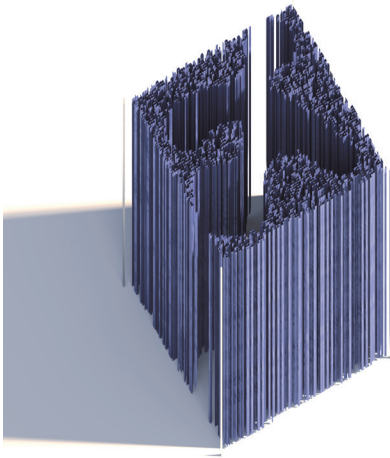
This space represents an architectural exploration of absorption. By incorporating long strips of fabric throughout the design, it aims to create an environment that emphasizes absorption in terms of acoustics and atmosphere. These fabrics are hung in strips, forming small, intimate areas for gathering and rest.



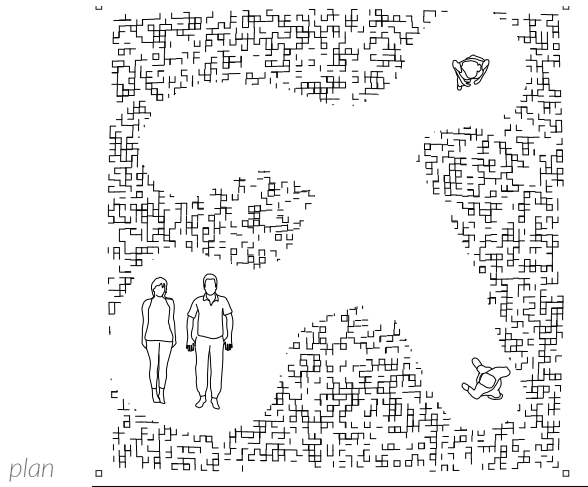
*section*



*plan axometric*



*worm's eye axon*



rendered perspective

