



MINUTES

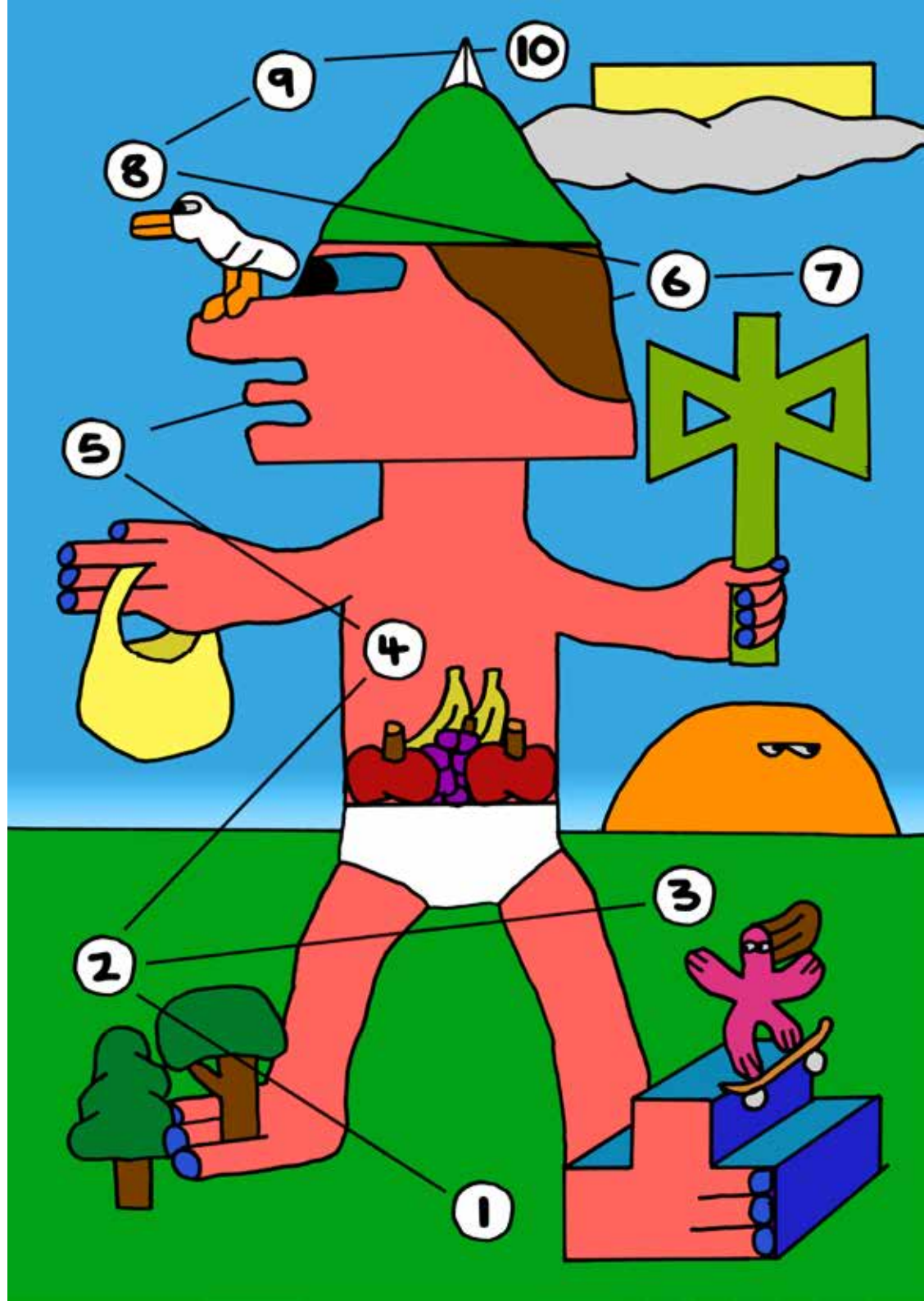
fringe

Friday 4 July

Sunday 27 July

**Milton Keynes Fringe Festival Map**  
by Tom Guilnard

All listed exhibitions are open to see  
Thursday–Sunday, 12pm to 4pm.







**Richard Harrison**

***Show Them Where To Go***

**What?**

Outdoor installation

**When?**

4 July—27 July  
[viewable 24/7]

**Where?**

Campbell Park, CMK

What3Words: ///bump.occupations.fronted

**Event:** Community Picnic, Sun 20 July 4—6pm

Based in Milton Keynes, Richard makes work that draws on the history of modified car culture and the visual codes of British suburbia to explore how identity and community are communicated.

Five bird boxes designed to reflect principles of automotive fabrication and aesthetics. A series of five birdhouse sculptures installed as part of MK Fringe Festival 2025. Inspired by Machinedrum's track "Oracle," the title—taken from the lyric "Show them Where To Go"—echoes both the song's themes of beauty, movement, and shared experience. Out of context the title refers to the idea of parenthood and teaching. Each birdhouse reflects principles of automotive fabrication—clean lines, fluid shapes, and subtle nods to car-body aesthetics—while drawing from organic, natural forms and the familiar vernacular of suburbia.

Image: Richard Harrison



8

Tendayi Vine

*Arcadia Is In The Soil*

What?

Outdoor installation

When?

7 July—27 July  
[viewable 24/7]

Where?

Campbell Park, CMK

What3Words: ///snores.dentristry.ground

Tendayi is an artist and researcher whose practice explores the material and immaterial territories of digital spaces. Working at the intersection of digital media and emerging technologies, outputs examine the human and non-human narratives embedded within these real and imagined terrains. Currently, Tendayi's research looks at the ecological and colonial legacies shaping virtual habitats, and speculates on the role of power and culture as architects of our everyday landscapes.

As contemporary experiences form landscapes that are both real and unreal, new interfaces between organic and artificial life continue to emerge. The images seen in *Arcadia Is In The Soil* act as fragments of those evolving spaces, offering a vision of 'idyllic' as seen by the hybrid citizen.

Image: Tendayi Vine





5

Zara Ramsay

*A Longer Day*

What?

Sculpture

When?

14 July—27 July  
[viewable 24/7]

Where?

Window, CMK Shopping Centre

What3Words: ///hockey.afterglow.stoops

Zara Ramsay's works are an exploration of the spirit in all things, particularly in the context of our contemporary, insulated lifestyles which cut us off from the natural rhythms and intelligence of the Earth. Drawing on both spiritual and scientific sources, nature as a doorway into life's mysteries and truth is explored to rekindle a sense of awe and enchantment with the world.

*A Longer Day* takes its primary inspiration from the sensation of rain hitting pavement—something all-encompassing yet barely there. A quiet presence that surrounds, catches the light, then slips away. Like much of Ramsay's work, it is also rooted in the language of dance: exploring balance and control, freedom and expression, the tension between discipline and release.

Constructed from stainless steel woven wire mesh, the piece draws from the urban textures of Milton Keynes—its reflective surfaces, its engineered clarity. Visually, it suggests a kind of musical score—fragments of notation stretched across space, inviting the viewer to imagine movement or sound. In the context of a town shaped by celestial alignments and a rational grid, the work offers a moment of reflection—a poised balance between structure and sensation, where fleeting light invites a quiet sense of awe.

Image: Cris Ison





**Nuzhat Fatima**

***Henna Homecoming:  
Stories in Stain***

**What?**

Exhibition + workshops

**When?**

19 July—26 July

**Where?**

187 MK Open Market, CMK

What3Words: ///voltages.peach.intricate

**Events:** Henna Workshop, Sat 19 July 1–3pm

Henna Workshop, Sat 19 July 1–3pm

Nuzhat is a multidisciplinary artist whose practice reimagines the traditional art of mehndi (henna) through contemporary lenses. Rooted in the rich visual language of the plant, her work transcends conventional applications by fluidly moving across mediums, painting, photography, politics and fashion.

With a vision to reposition henna as more than a ceremonial adornment, Nuzhat challenges boundaries by placing henna in everyday and unexpected contexts. From intricate patterns on skin to bold imprints on unconventional bodies, she invites us to consider henna as both wearable art and a form of visual storytelling that belongs equally on the body, in the home, and within gallery walls.

Image: Nuzhat Fatima





3

Thomas Eke

*Places Together*

What?

Indoor installation

When?

4 July—27 July

Where?

8 Sunset Walk, CMK

What3Words: ///deflated.commander.jaundice

**Event:** Artists Share, Sat 12 July 1–2.30pm

The Places Together workshop team, consisting of members from the YMCA and U3A, and Artist Thomas Eke, share their inter-generationally co-designed-and-made ceramic tableware set + invite conversation around the future of their project.

Thomas Eke works with people to collectively rethink everyday life through art, with work manifesting through long-term projects, teaching, performance lectures and events. This method of work informs an approach founded in a centring equity, citizenry, collectivity and a trust in art as a catalyst for connection and belonging. Always with-in the scenius\*.

*\*Scenius, the communal form of genius.*

Places Together is an intergenerational Ceramic + Plaster Workshop currently made up of twelve workshop members who work together to explore the physical making processes of ceramic and plaster casting with a collective engagement in experimentation and exchange. In this work-in-progress exhibition, Places Together presents research and work to-date, with 12 slip cast plates that have been individually made within a modular form, designed to fit together so to bring diners

Image: Thomas Eke





## Group Show

### *Wouldn't It Be Nice*

#### What?

Exhibition of 23 artists

#### When?

12 July—27 July  
[12–4pm]

#### Where?

The Old Bus Station, CMK

What3Words: [///performs.noble.producers](https://www.what3words.com/performs.noble.producers)

**Event:** Private View, Fri 11 July 6—9pm

[open to all! - free ticket via website]

*Wouldn't It Be Nice* is an exhibition exploring the nuances of collaboration—pairing, communication, conversation, and the formation of connection. It considers the moment of encounter: what happens between two solid things? What emerges at the edge of one form meeting another?

Bringing together both established and emerging artists to examine how place influences practice. Set within the transitional space of Milton Keynes' Grade II-listed former bus station, the exhibition mirrors the themes of change, disuse, and renewal in a city perpetually shifting. The architecture itself —weathered and storied —serves as a living backdrop, its material traces echoing the past while housing visions of what might come next.

These works inhabit the liminal, offering reflections on time passing, of a city aging. The exhibition takes its title from the closing line of the iconic The Story of the Red Balloon advertisement, created to promote Milton Keynes as a model for a new kind of city. Wouldn't It Be Nice if all cities were like Milton Keynes?

*Wouldn't It Be Nice* invokes the arcadian spirit that once propelled its creation—an idealism that still lingers in its infrastructure, now half-forgotten or reimagined. It reflects the energy behind the dream of a hopeful utopia- that same energy which is still reverberating around the city's many disused buildings almost 60 years on, and an energy which Milton Keynes Fringe festival aims to bring to the city.

### Exhibiting Artists

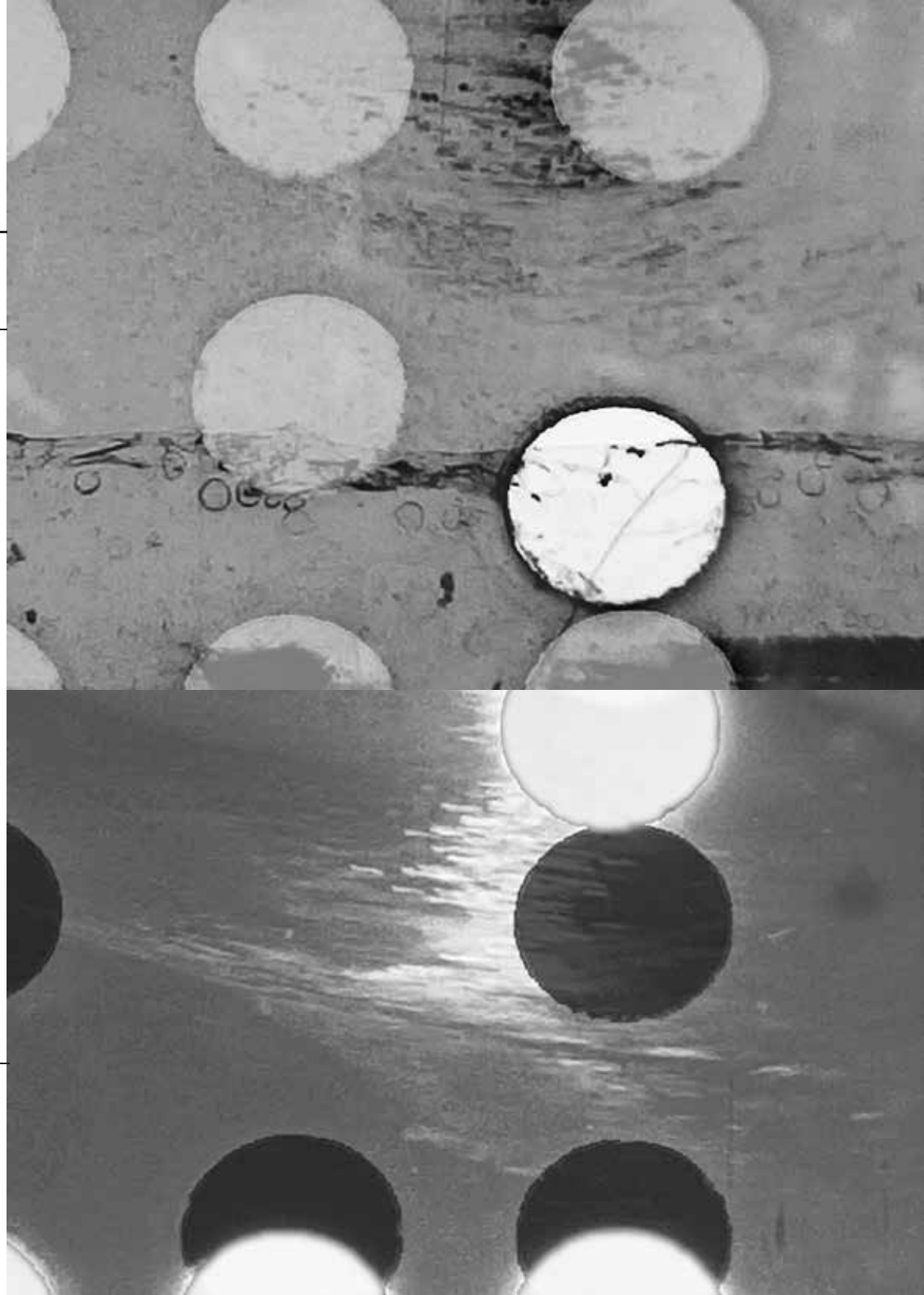
Emma Wilde, Macy Wong-Prior, Saint Takyi, James Carney, Lewis Webb, Danny Hawkins, Robin Clements, Carlos Cortes, Sagar Kharecha, Vikki Neill, James Aldous, Ruth Toda-Nation, Joseph Madden, Kinga Kulczyc, Iris Wright, Signe Eliza Pook, Leah Carvel, Benjamin Bird, Sharon Paulger, Beatrice Ni Bhroin, Sabre Majid.

Image: Macy Wong-Prior



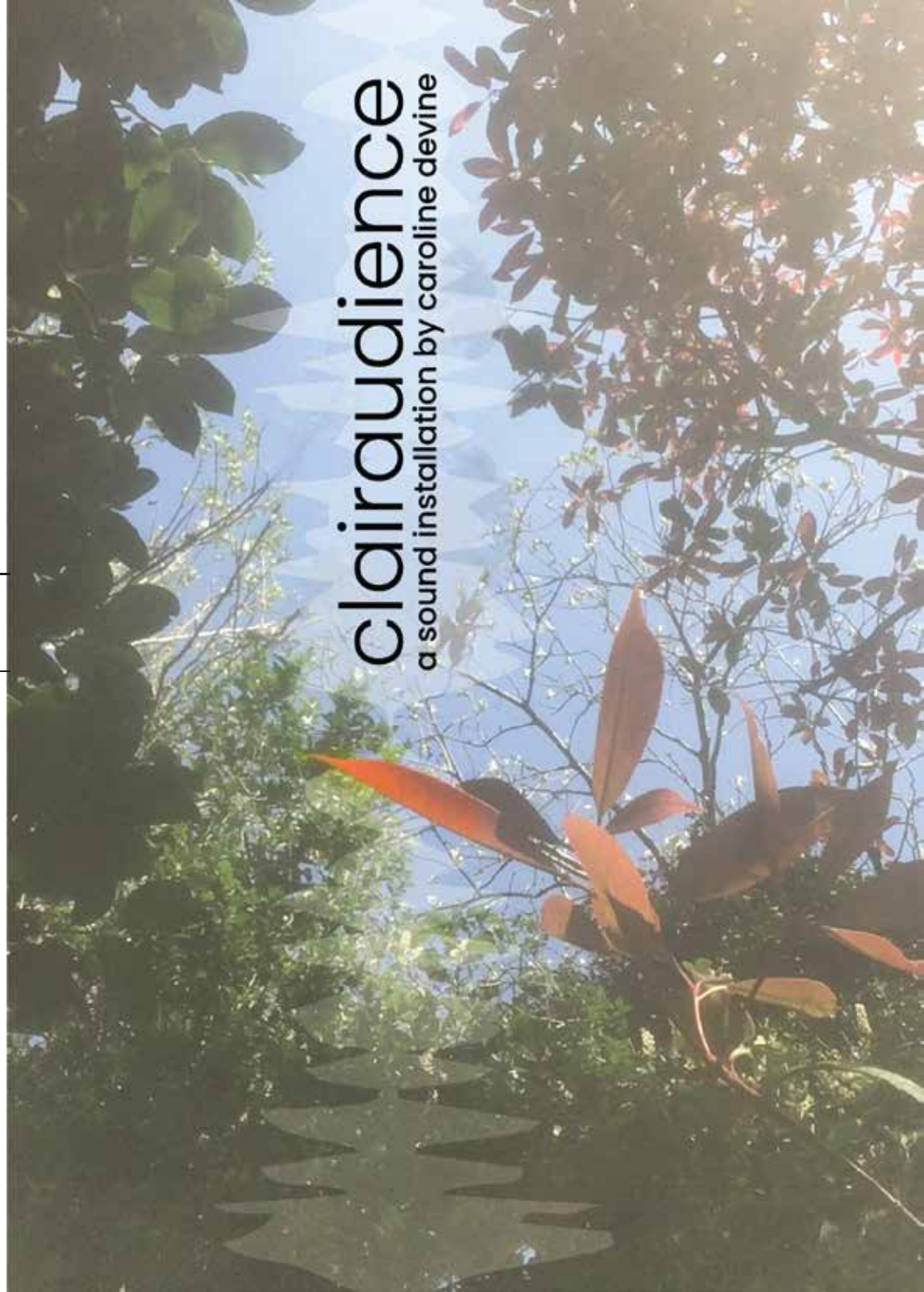


6	Clint Trofa + Sapphire Goss	What?	When?
	<i>No Longer A Memory</i>	Live performance	Sat 12 July [6–10pm]
		Where?	
		Big Shop Friday, CMK	
		What3words: ///answer.someone.threading	
		<p>Composer, The Duke of Zuke (Clint Trofa), and artist, Sapphire Goss, bring a collaborative performance of ethereal, delicate soundscapes live-mixed with looping, growing and decaying analogue visuals and video to audio sonification, an oscillation between sound and vision, to create a spectral, haunting reverie.</p> <p>Clint Trofa is a London-based filmmaker and musician. Composing and performing under his ‘The Duke of Zuke’ moniker, he creates delicate and haunting soundscapes through the use of loops, drones, field recordings, noise and minimal electronics. His live performances are complimented by the beautiful imagery of visual artist and long-time collaborator, Sapphire Goss.</p> <p>Sapphire Goss is a British artist who works with experimental moving image and photographic processes to create an ‘analogue uncanny’. Her work has been shown in exhibitions, performances and events globally.</p>	
	Support: James Carney		
	<i>Records and Evidence Centre</i>	<p>Records and Evidence Centre is the dread-inducing solo project of James Carney (Action Beat/Bad Body). With a nod to unsolved crime, forgotten industries and failed utopianism, archaic equipment wheezes out patch-worked samples and brittle drones during an uninterrupted loop of misery and confusion.</p>	
	Photo: Sapphire Goss		



<b>2</b> Caroline Devine <i>clairaudience</i>	<b>What?</b> Sound installation	<b>When?</b> Sat 19 July [4pm–8pm]
	<b>Where?</b> Grafton Park, CMK What3Words: ///mallets.cuddled.taxi	
	<p>Caroline Devine’s practice investigates the boundary between sound and music. She is interested in the way that sound relates to memory, environment, time and place. Her works focus on the exploration of voices, sounds and signals that are ordinarily obscured, silenced or in some way absent, and provide unexpected encounters with sound and space outside of a conventional gallery setting.</p> <p><i>clairaudience</i> is a multi-channel sound installation by artist Caroline Devine for Grafton Park that responds to and augments the sonic environment of the park and its more-than-human inhabitants. Diffused throughout the bushes and trees, the work explores the boundaries between sound and music and creates an ongoing dialogue with the natural soundscape.</p>	

Image: Caroline Devine



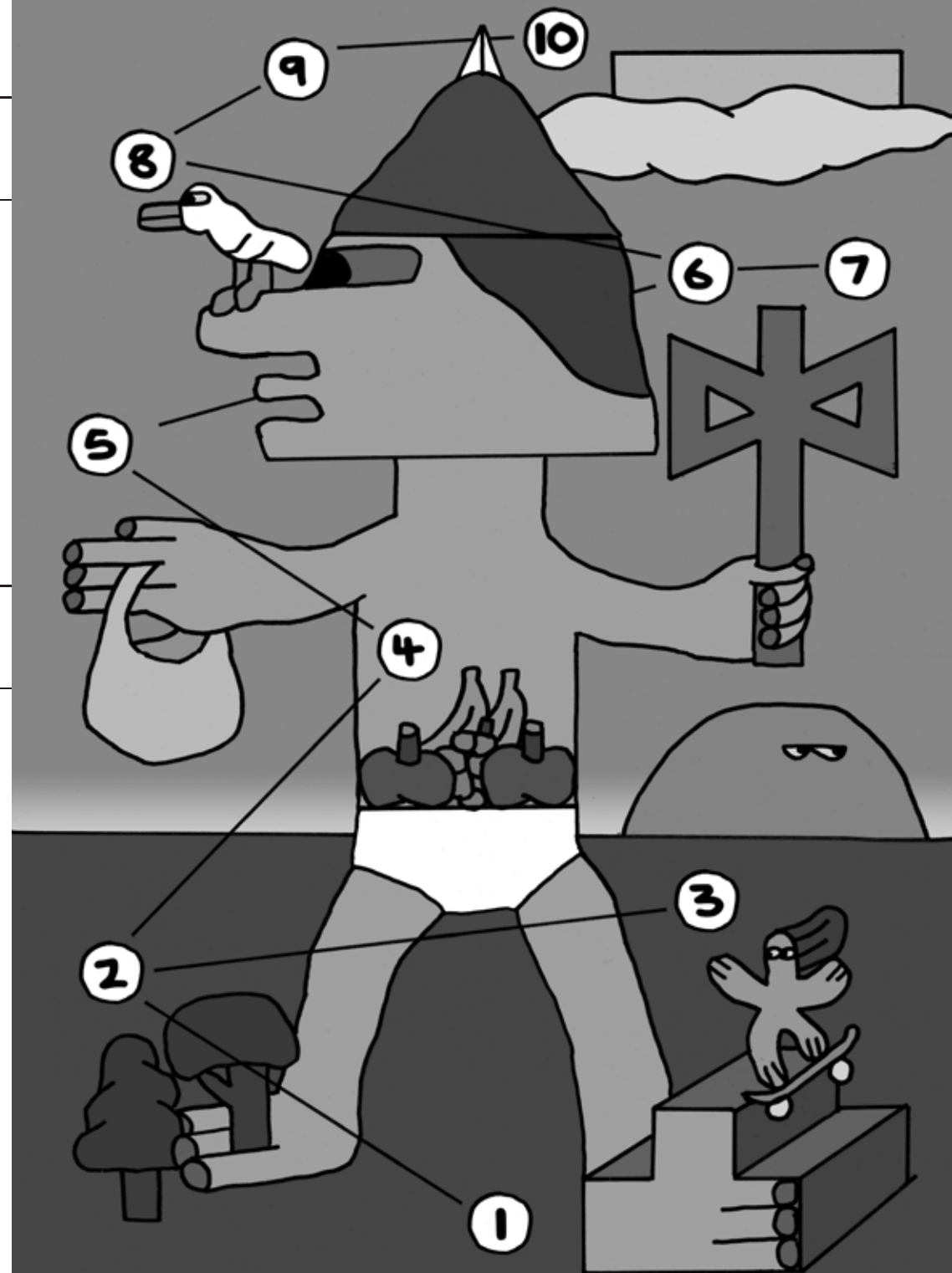
⑦ Heather Britton	What?	When?
<i>Braiding The Fragments</i>	Audio Visual installation	19 July + 20 July [12–4pm]
	Where?	
	MK Gallery Events Space, CMK	
	What3Words: ///dolphin.conspire.data	
	<p><i>Braiding the Fragments</i> explores the convergence of creativity and one's evolving identity during pregnancy, through both secondary and practice research resulting in the creation of an original audiovisual composition.</p>	
	<p>Heather Britton is a multi-instrumentalist, filmmaker and audiovisual composer working across multiple mediums and genres. She completed her MA in Creative Practice at Goldsmiths, where she produced her first audiovisual album and a documentary film exploring the effects of aging on the identity of a nonagenarian jazz musician. Projects include composition and score for a political sound piece for the BBC, ICA and NTS radio, composing music for film and TV and numerous video editing projects including live visuals for choral group The Sixteen, a SIMA award-winning short for Kew Gardens, various music videos and an ethnographic film about the making of a Javanese gong. She is on the editorial board for the audiovisual journal Sonic Scope and is an associate lecturer at BIMM and Goldsmiths University.</p>	

Image: Heather Britton





①	<b>Robin Clements</b>	<b>What?</b>	<b>When?</b>
	<i>Walking tour</i>	Walking tour	Sat 19 July [2pm–4pm]
		<b>Where?</b>	
		<b>Start:</b> The Old Bus Station, 2pm What3Words: ///performs.noble.producers <b>End:</b> Campbell Park, 4pm What3Words: /// bump.occupations.fronted	
		Join artist Robin Clements at The Old Bus Station on a guided walking tour of the whole festival. The tour will take you through all of the festival locations and allow you to engage with some interactive elements of the festival.	
		<b>What?</b>	<b>When?</b>
	<b>Sensory Tour</b>	Sensory Tour	Sat 26 July [2pm–4pm]
		<b>Where?</b>	
		<b>Start:</b> The Old Bus Station, 2pm What3Words: ///performs.noble.producers <b>End:</b> Campbell Park, 4pm What3Words: /// bump.occupations.fronted	
		Join artist Robin Clements at The Old Bus Station on a guided walking tour of the whole festival. The tour will take you through all of the festival locations and allow you to engage with some interactive elements of the festival. This tour is designed to offer audiences a more sensory experience of the festival, Robin will be activating certain works throughout the festival, encouraging audiences to experiment with the way they see, hear, smell and touch the artwork.	
		You must be comfortable walking, using pedestrian crossings or be accompanied by someone who can assist you.	



10	Closing Party	What?	When?
<b>East London Strippers Collective</b> + <i>DJs</i>		Life Drawing + party	19 July + 20 July [7.30pm–12am]
7.30–9.30pm Life Drawing		<b>Where?</b>	The Box Arts Club, Kiln Farm What3Words: ///roses.anchorman.they
9.30pm–Midnight Drinks, dancing + DJs		In order to celebrate an Milton Keynes Fringe Festival 2025 we invite you all to join us for an evening of life drawing, dancing and DJs.	
		The life drawing class with the East London Strippers Collective will be fast paced and involve high-octane aerial pole poses. Incorporating some traditional life drawing with a couple of 5, 10 and 15 minutes poses. Expect the extremely popular ‘audience participation’ exercises; a nod to the ‘lap dance’ these poses encourage a fun, mischievous atmosphere throughout the class. Bring cash for tips!	
		The ELSC de-stigmatise sex work & create their own working conditions through these interdisciplinary classes which include drawing, visual arts, dance music, comedy, improv, performance and writing.	

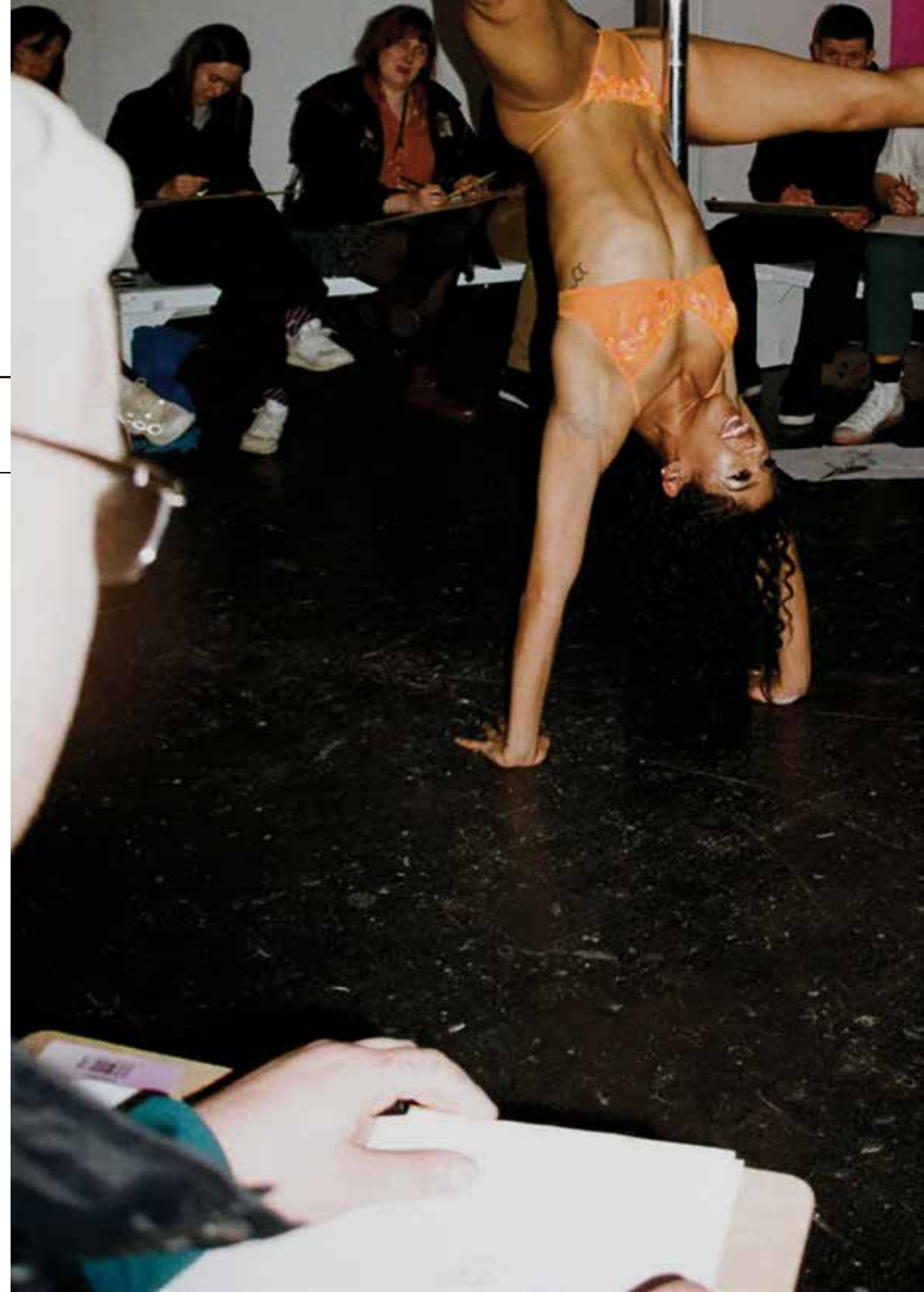


Image: Poppy Pray [@whoretographer]



*Thank you,* John Best, Veda Beeharry, Fiona Boundy, Lisa Boyd, Declan Burley, Kevin Cassidy, Paul Cockayne, Julie Dawes, Ben Gaynor, Victoria Gibb, Richard Harrison, Joe Jarvis, Madeleine Jordan, Lisa Noall, Tara Page, Luke Rawlinson, Claire Sapsford, Rochelle Talary, Megan Towers, Simon Wright, Roisin Callaghan, Charlotte Rentell, Guy Morris, Alex Szczepaniak, Rebecca Haycock, Joe Westley, Letitia Evans-Minto, Talia Barrington, Ellen Whitbread, Molly, Natacha Lachowski, Charis Oke, Vikki Neill, Helen Vernon, Huma Mahmood, Alan Carter, Jackie Soltan, Ken Shaw, Charlie Currie, Danielle Ediale, and Ash!

X

X

X

X

X

LOVE  
C + M

supported by:

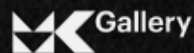


Supported using public funding by  
**ARTS COUNCIL  
ENGLAND**



Funded by  
**UK Government**

**01908**



**OFFSET** projects



**MILTON KEYNES  
MARKET**



**Milton Keynes**  
Development Partnership